



CBRE

7665 COMMERCE WAY

EDEN PRAIRIE, MN 55344

NEGOTIABLE
SALE PRICE

16,000 - 93,000 SF
AVAILABLE FOR SALE



PROPERTY SPECIFICATIONS

Location 7665 Commerce Way Eden Prairie, MN 55344

Total Building 93,000 SF
- Office: 15,501 SF
- Warehouse: 74,819 SF
- 13 docks

Clear Height 18'

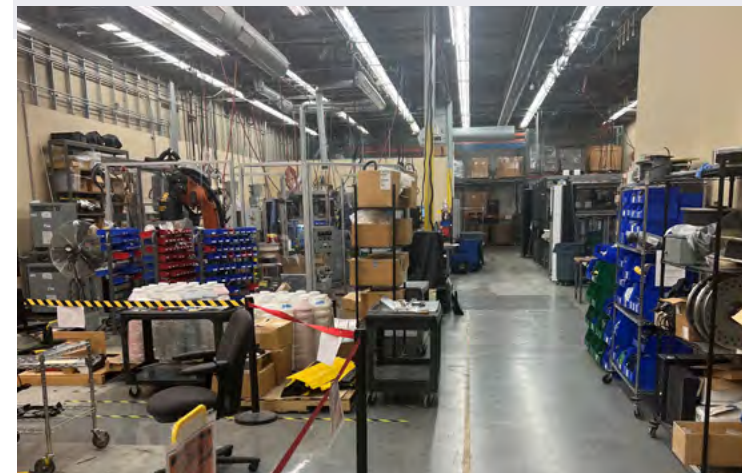
Parking 150 stalls

Power 6,000 amps, 480V, 3Phase

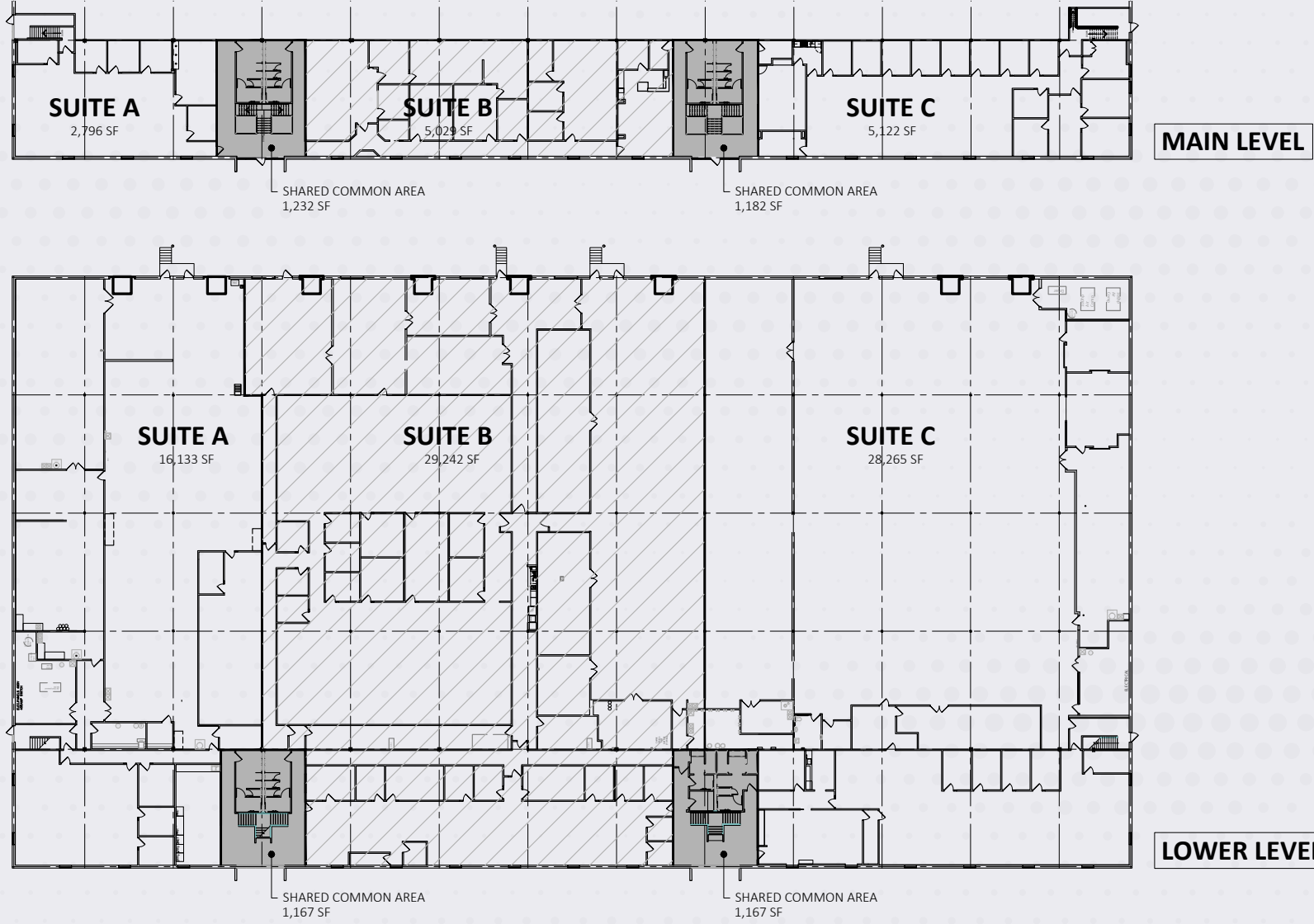
Additional Specifications
- 32 HVAC units
- 217 tons of cooling
- 32 roof top units
- Located off 212 and Mitchell Road
- Minutes from 494

RECENT UPGRADES

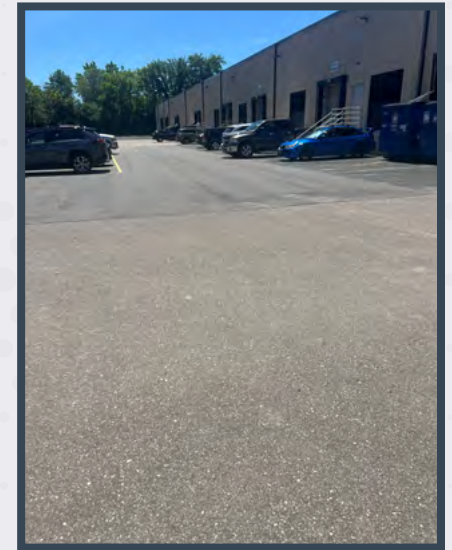
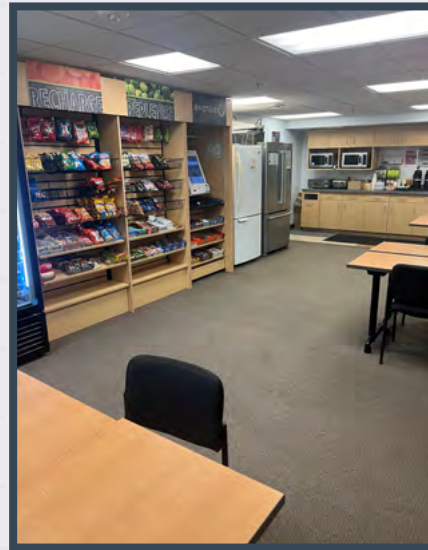
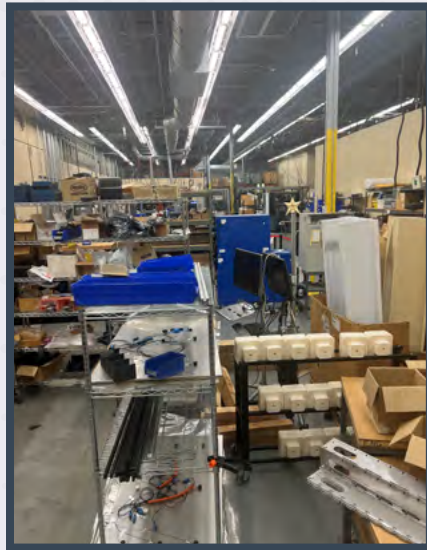
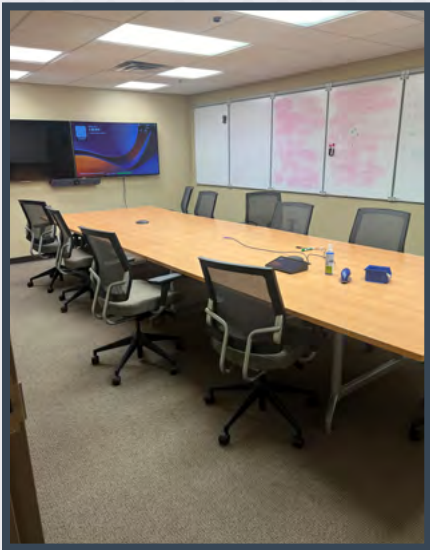
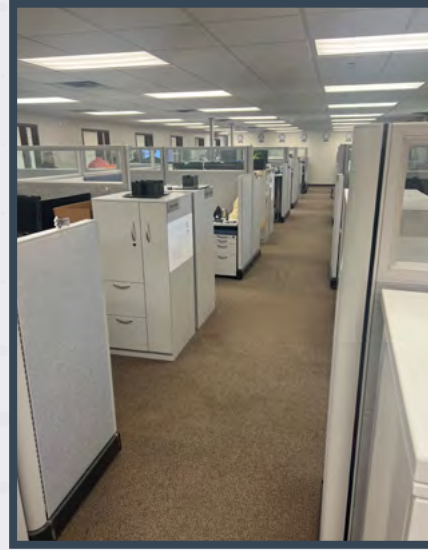
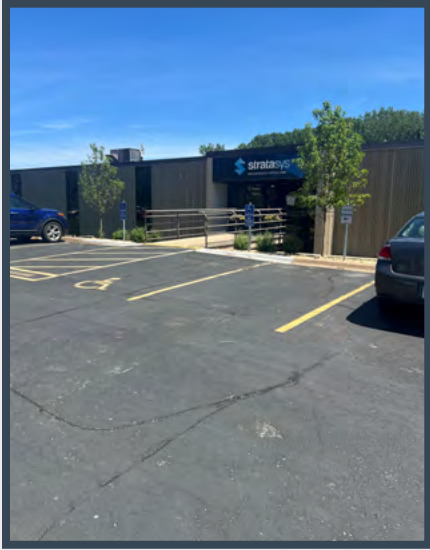
- Landscaping across the front including new landscape brick walls, dirt work and sod, stairs and drainage
- Cut and re-caulked the entire structure including the windows
- Replaced all metal doors 2023
- Overlaid the upper parking lot
- all new lights packs on the outside



FLOOR PLAN



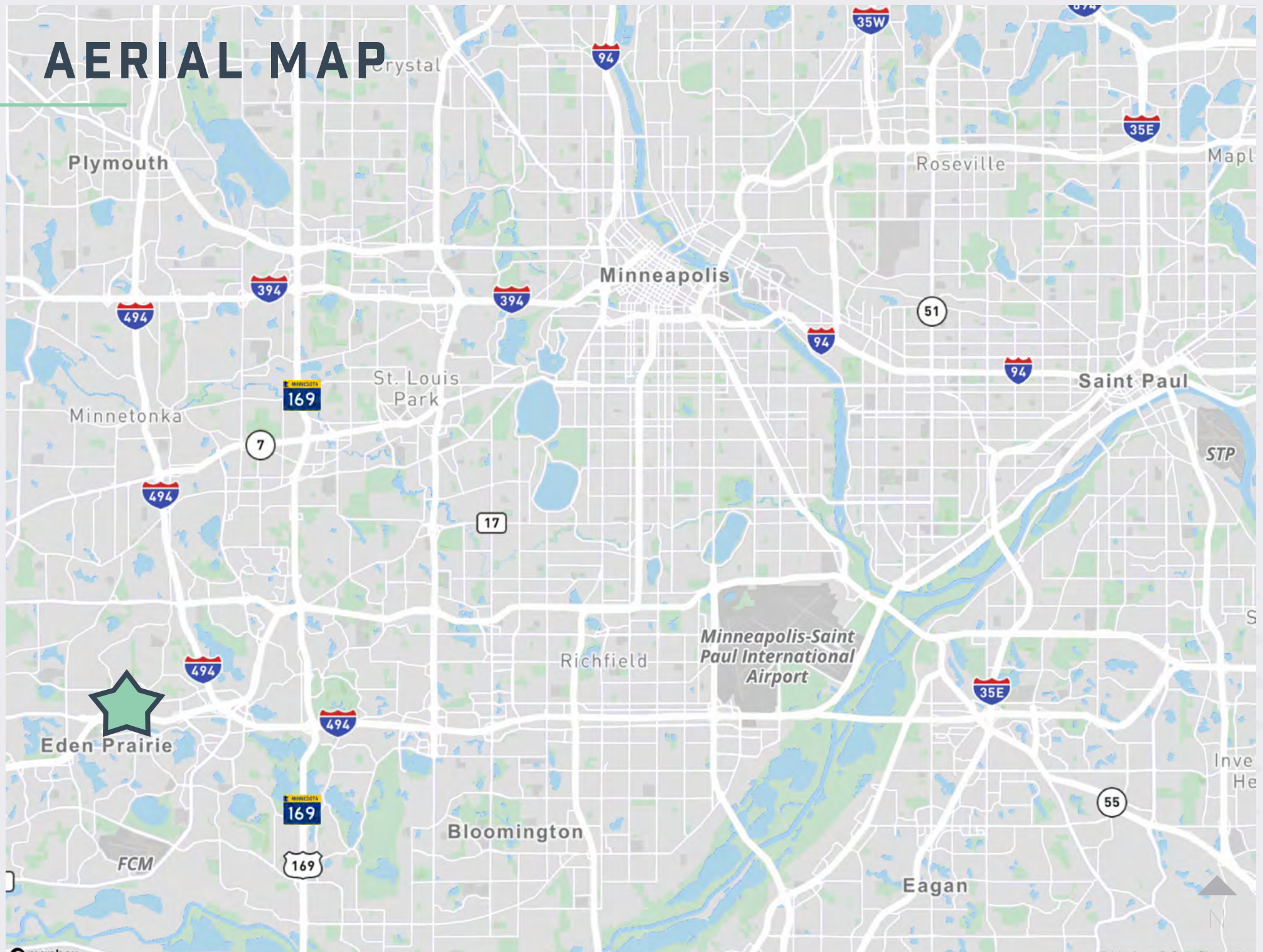
PHOTOS



SITE OUTLINE



AERIAL MAP





7665 COMMERCE WAY

EDEN PRAIRE, MN 55344

16,000 - 93,000 SF
AVAILABLE FOR SALE

JAMES DEPIETRO
+1 952 924 4614
james.depietro@cbre.com

RICK GRAFF
+1 952 924 4827
rick.graf@cbre.com



CBRE