



1625

Oakley Industrial Blvd

Palmetto, GA

Sublease from 11/1/2023 - 10/31/2028

907,665 s.f. on 58.8 acres

Brad Pope, SIOR, CCIM
Senior Managing Director
+1 404 995 2261
brad.pope@jll.com

Palmer Thomas
Managing Director
+1 404 405 4911
palmer.thomas@jll.com



Property specifications

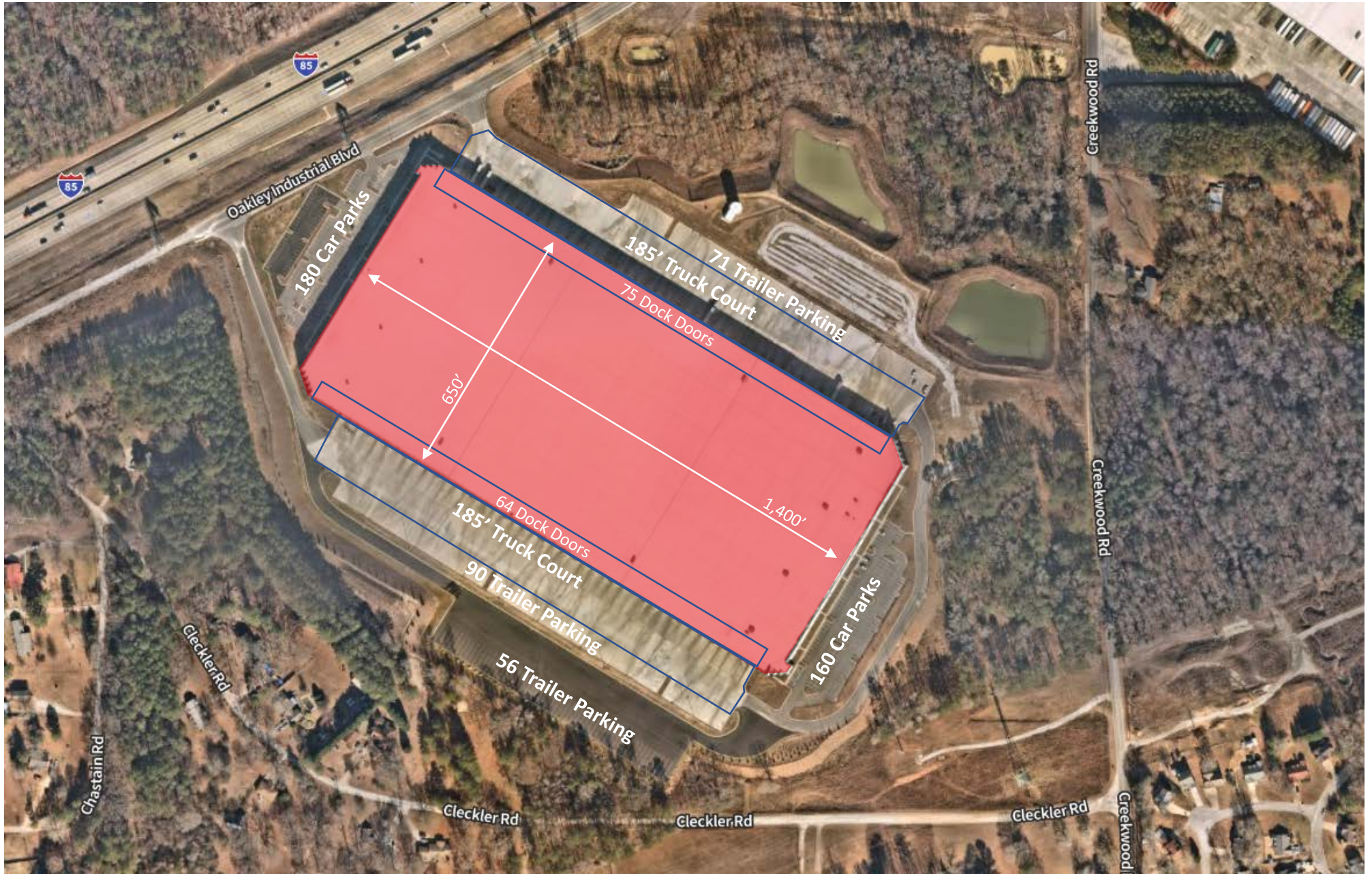
1625 Oakley Industrial Blvd



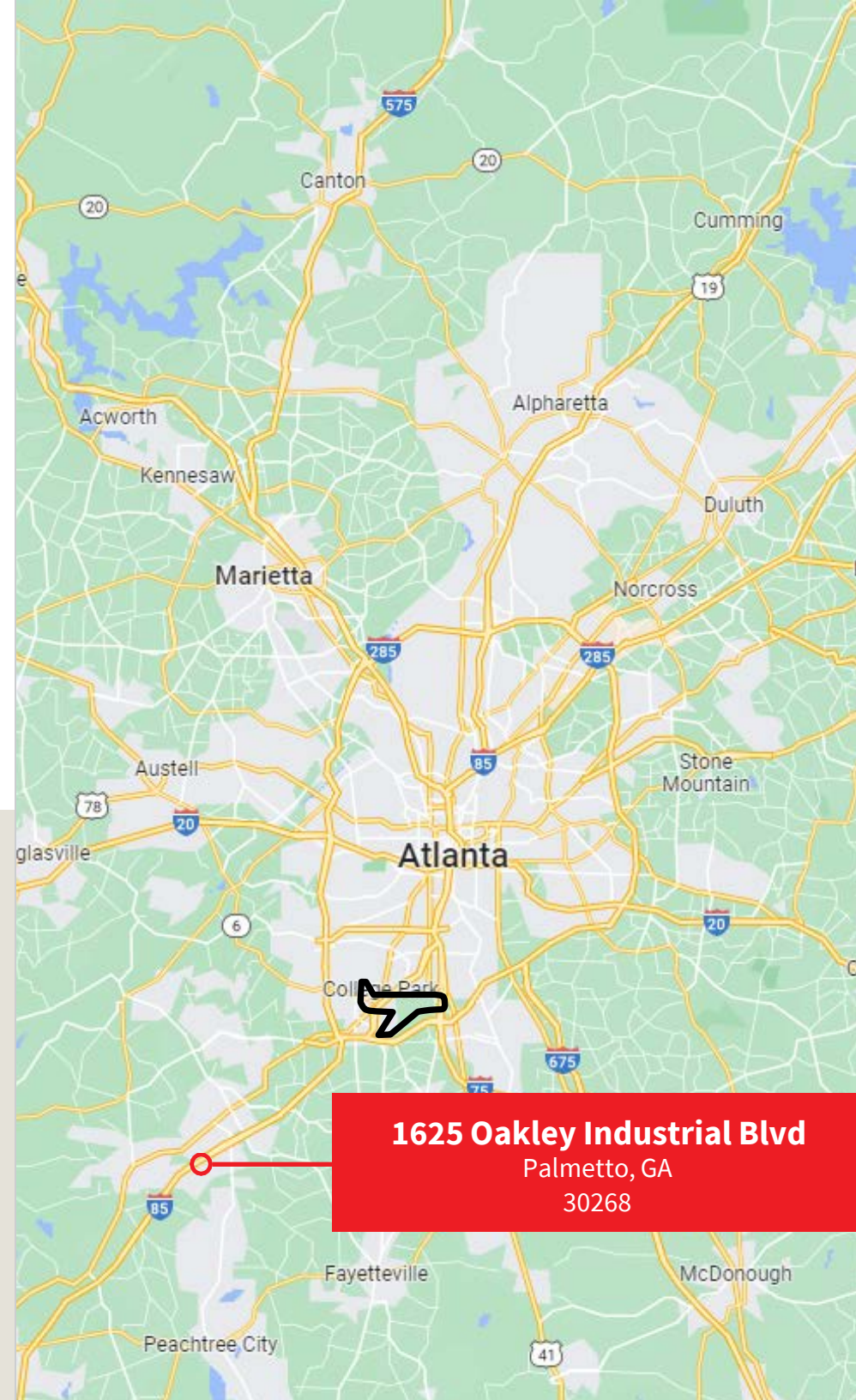
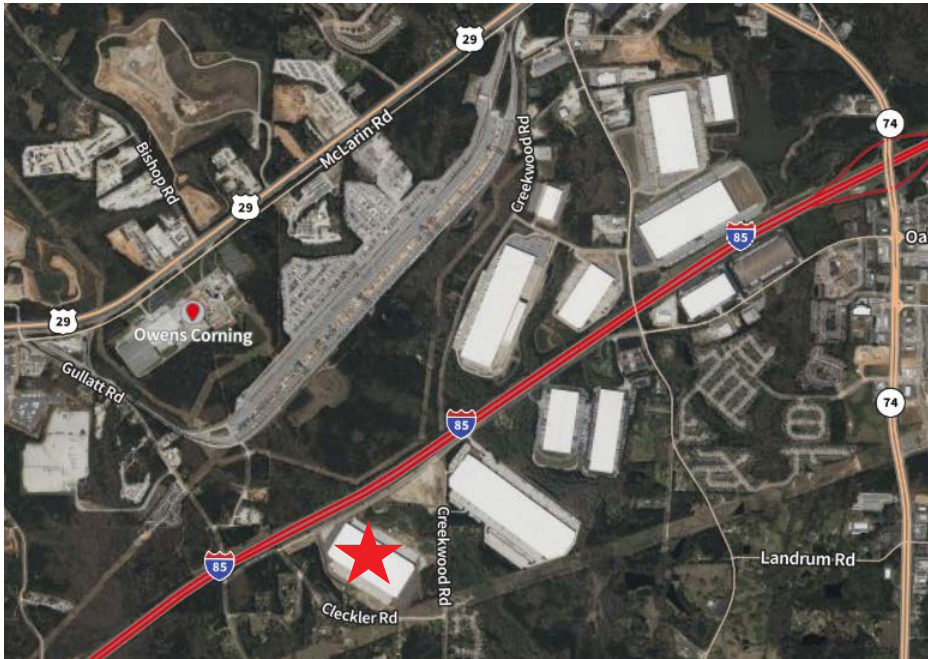
Building size	907,665	Clear height	40'	Fire suppression	ESFR
Available s.f.	907,665	Dock doors	139	Power	3-phase, 3,200AMPS
Parcel size	58.8 acres	Grade level doors	4	Auto parking	340
Office s.f.	+/-3,000	Truck court depth	185'	Trailer parking	161
Building dimensions	1,400' x 650'	Warehouse lighting	LED	Built	2021
Column spacing	52' x 56'				

Property Aerial

1625 Oakley Industrial Blvd



Location - 1625 Oakley Industrial



22.0

miles from
Atlanta



1.8

miles from
I-85



12.4

miles from
Hartfield



356.0

miles from
Georgia Ports Authority

1625 Oakley Industrial Blvd

Palmetto, GA

30268