



AVAILABLE: MEDICAL OFFICE SPACE



Cabrini Medical Tower

901 Boren Avenue

Seattle, WA 98104

FEATURES

- Great City, Mt. Rainier and Puget Sound views
- Onsite garage parking. Ratio 1/1,000 RSF at \$175/month.
- Located in the heart of First Hill Medical District
- Easy access to I-5

Suite	RSF	Rate	Status
400	6,166	\$39.50/SF Gross	Available

SUHRCO manages a diverse portfolio of commercial and multifamily residential properties in the Puget Sound region. Established in 1973, the company employs more than 300 experienced professionals dedicated to meeting the management, leasing and brokerage needs of building owners, tenants, and condominium/homeowner association boards and owners.

Contact:

Peter Townsend, RPA®

Email: petert@suhrco.com

T: (425) 455-1950 F: (425) 462-1943

2010 156th Avenue NE, Suite 100, Bellevue, WA 98007

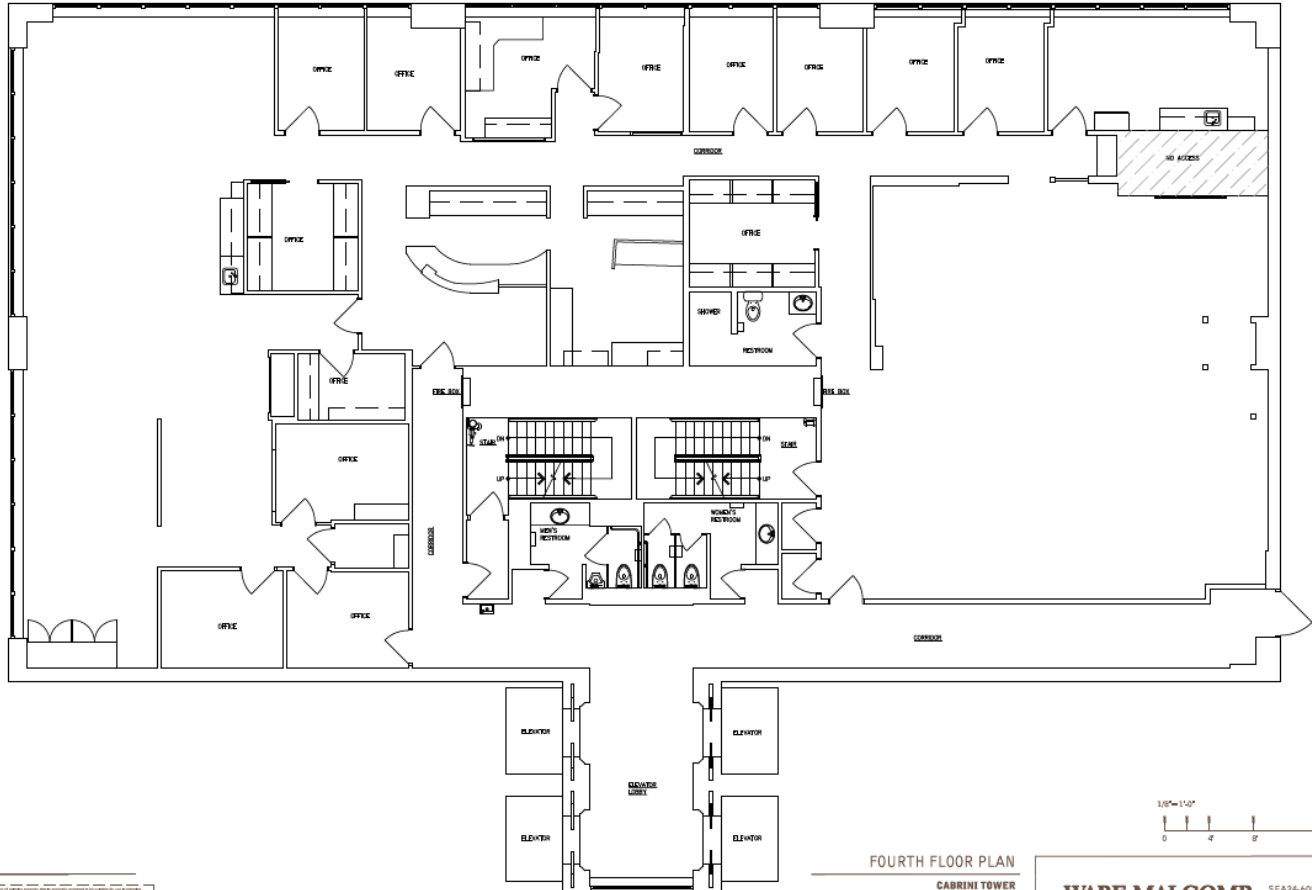
Floor plans shown on following pages.

SUHRCO Management, Inc., AMO®



AVAILABLE: Medical Office Space

SUITE 400 - 6,166 RSF



THIS PLAN AND ALL INFORMATION CONTAINED HEREIN ARE THE PROPERTY OF SUHRCO. NO PART OF THIS PLAN OR INFORMATION CONTAINED HEREIN IS TO BE REPRODUCED OR TRANSMITTED IN ANY FORM OR BY ANY MEANS, ELECTRONIC OR MECHANICAL, INCLUDING PHOTOCOPYING, RECORDING, OR BY ANY INFORMATION STORAGE AND RETRIEVAL SYSTEM, WITHOUT THE WRITTEN PERMISSION OF SUHRCO.

FOURTH FLOOR PLAN
CABRINI TOWER
901 BOREN AVE | SEATTLE, WA 98104

WARE MALCOMB SE24-6080-00 SHEET
06.07.2024 1