

CALL 415-383-8400 FOR MORE DETAILS

DRE # 01351735



27 GATE FIVE ROAD

2480 SF COMMERCIAL SPACE AVAILABLE

Sausalito, CA 94965



SPACE	SIZE	TERM	RATE	SPACE USE	CONDITION	AVAILABLE
-------	------	------	------	-----------	-----------	-----------

Main floor 2480 sq ft Negotiable \$32.90/SF/YR Commercial GOOD August 2025

27 Gate Five Road, Sausalito — Main Floor, Suite 27B

- Listed rate does not include certain property expenses such as utilities
- Open floor plan
- Commercial Office space
- Highly Visible unit
- 24 Hour access
- Two Private restroom
- Easy access
- Ample parking on property
- Fits 3—9 people

Vital Statistics ~ Sausalito

Median Age 52.5 years

18-64 years old = 68% of population

Male 47 %

Avg. House Income \$140,417

Female 53 %

Avg. Worker \$65,584

7,021 residents

Located in high density Commercial

Weekday daily traffic count 26,251 cars

Bridgeway Ave has one of the highest traffic counts in Marin County making the subject property highly visible in the area. Located close to Highway 101 including easy access to San Francisco, Oakland, and Sacramento. The property is within walking distance to the quaint and thriving shops and restaurants, and only a 10 minute walk to downtown Sausalito. Additionally, this location provides easy access to the highly affluent communities of Tiburon and Belvedere

PROPERTY FACTS

Rental Rate	\$32.90 /SF/YR
Business Type	Commercial Office Building

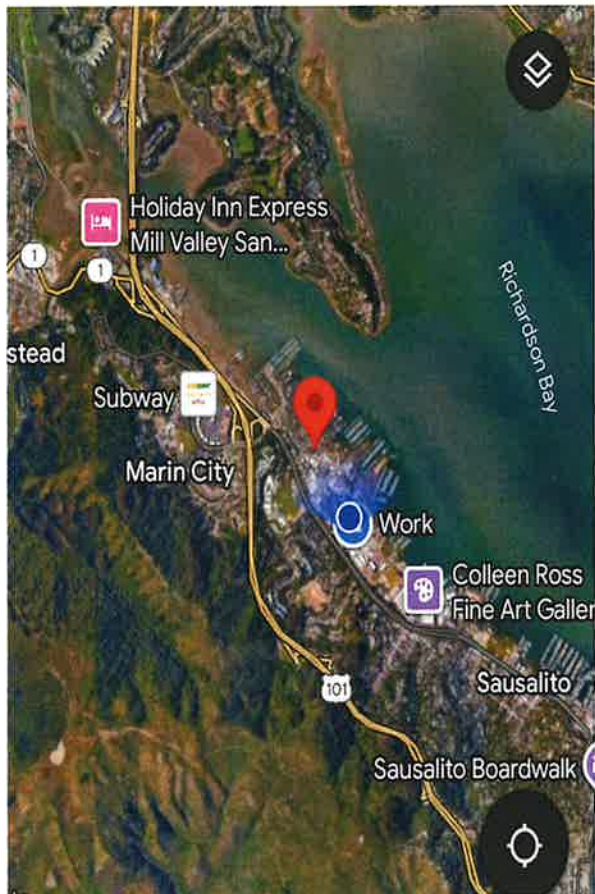
OTHER TENANTS

BUILDING	TENANT NAME	INDUSTRY
27 A	POWER CONSTRUCTION	Construction Company
27B	NATURE OF HAIR	Moving out

PROXIMITY TO:

Shopping Centers	Marin Gateway Center	0.6 miles
Bus Lines	Golden Gate Transit	0.1miles
	Routes 130, 17, 61	
HWY 101	North/South Hwy 101	0.3 miles
Schools	Tamalpais High School	3.0 miles
	New Village School	0.2 miles
Medical Facilities	MarinHealth Med Center	5.8 miles
	UCSF Urgent Care	2.7 miles

27 GATE FIVE ROAD, SAUSALITO CA. 94965



Target Property

27 Gate Five Road, Sausalito, CA 94965

27 GATE FIVE ROAD, SAUSALITO CA. 94965

ADDITIONAL PHOTOS

