

**6,000 SQ. FT. OFFICE / WAREHOUSE**

**39 MAIN ST, JACKSON, SC 29831**

### PROPERTY SUMMARY



#### PROPERTY DESCRIPTION

Brand New 6,000 sq. ft. Office / Warehouse consisting of Approximately 500 sq. ft. of Office with Two Private Offices, Conference Room and One Bathroom. The Warehouse has 16' clear Ceiling Height and Two Drive-Thru Doors.

#### PROPERTY HIGHLIGHTS

- 6,000 sq. ft. Building
- Brand New Construction
- Located in the Heart of Jackson
- Close Access to Savannah River Site

#### OFFERING SUMMARY

Lease Rate:

\$9.00 SF/yr (NNN)

Building Size:

6,000 SF

#### For More Information:

**Scott A. Atkins, SIOR, CCIM**

President

[scott@atkinsrealty.com](mailto:scott@atkinsrealty.com)



# ATKINS

COMMERCIAL PROPERTIES

INDUSTRIAL BUILDING FOR LEASE

6,000 SQ. FT. OFFICE / WAREHOUSE

39 MAIN ST, JACKSON, SC 29831

## ADDITIONAL PHOTOS



**For More Information:**

**Scott A. Atkins, SIOR, CCIM**

President

[scott@atkinsrealty.com](mailto:scott@atkinsrealty.com)



# ATKINS

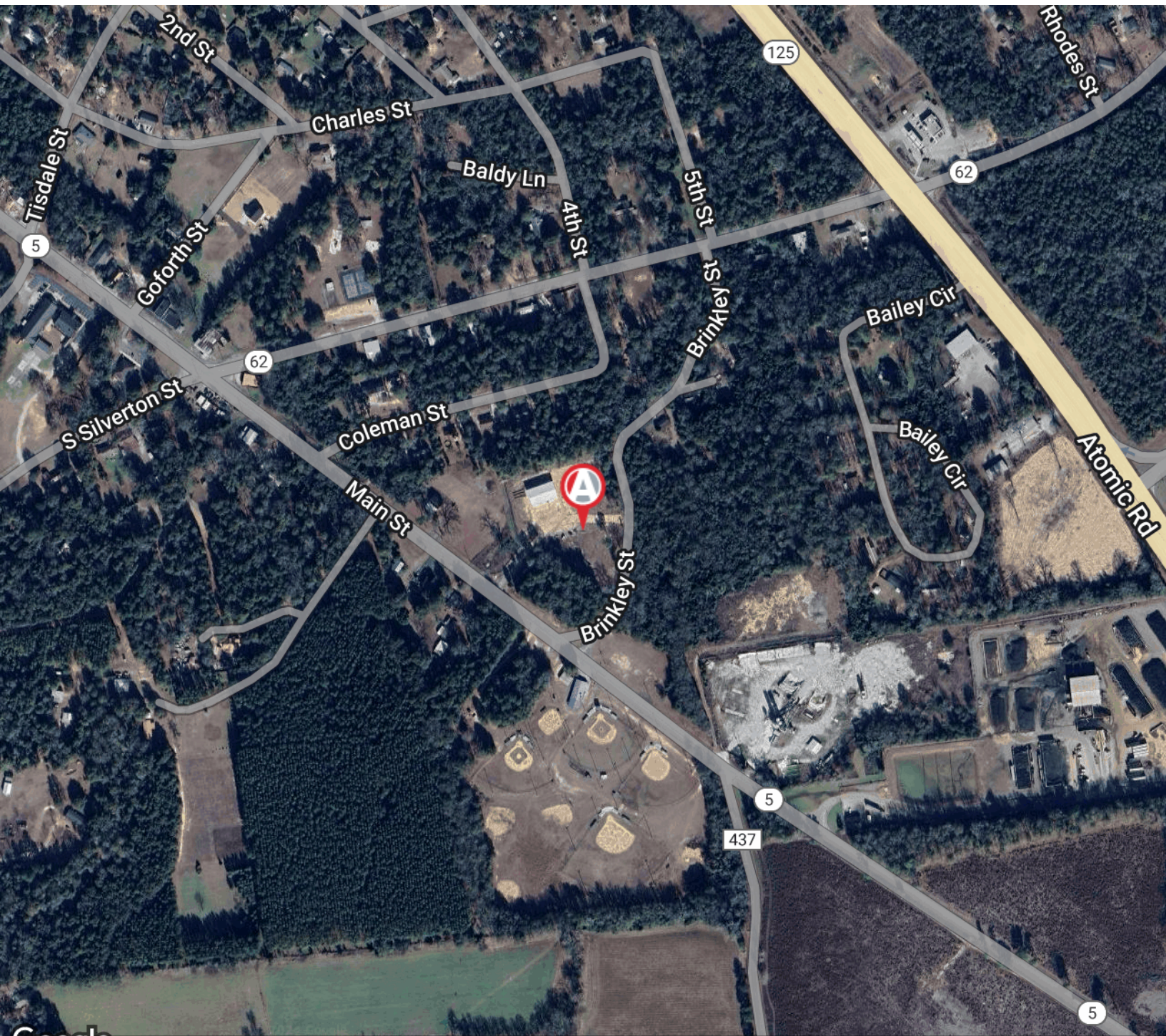
COMMERCIAL PROPERTIES

INDUSTRIAL BUILDING FOR LEASE

**6,000 SQ. FT. OFFICE / WAREHOUSE**

**39 MAIN ST, JACKSON, SC 29831**

## LOCATION MAP



Google Map data ©2024 Imagery ©2024 Airbus, CNES / Airbus, Maxar Technologies, U.S. Geological Survey, USDA/FPAC/GEO

**For More Information:**

**Scott A. Atkins, SIOR, CCIM**

President

[scott@atkinsrealty.com](mailto:scott@atkinsrealty.com)

