

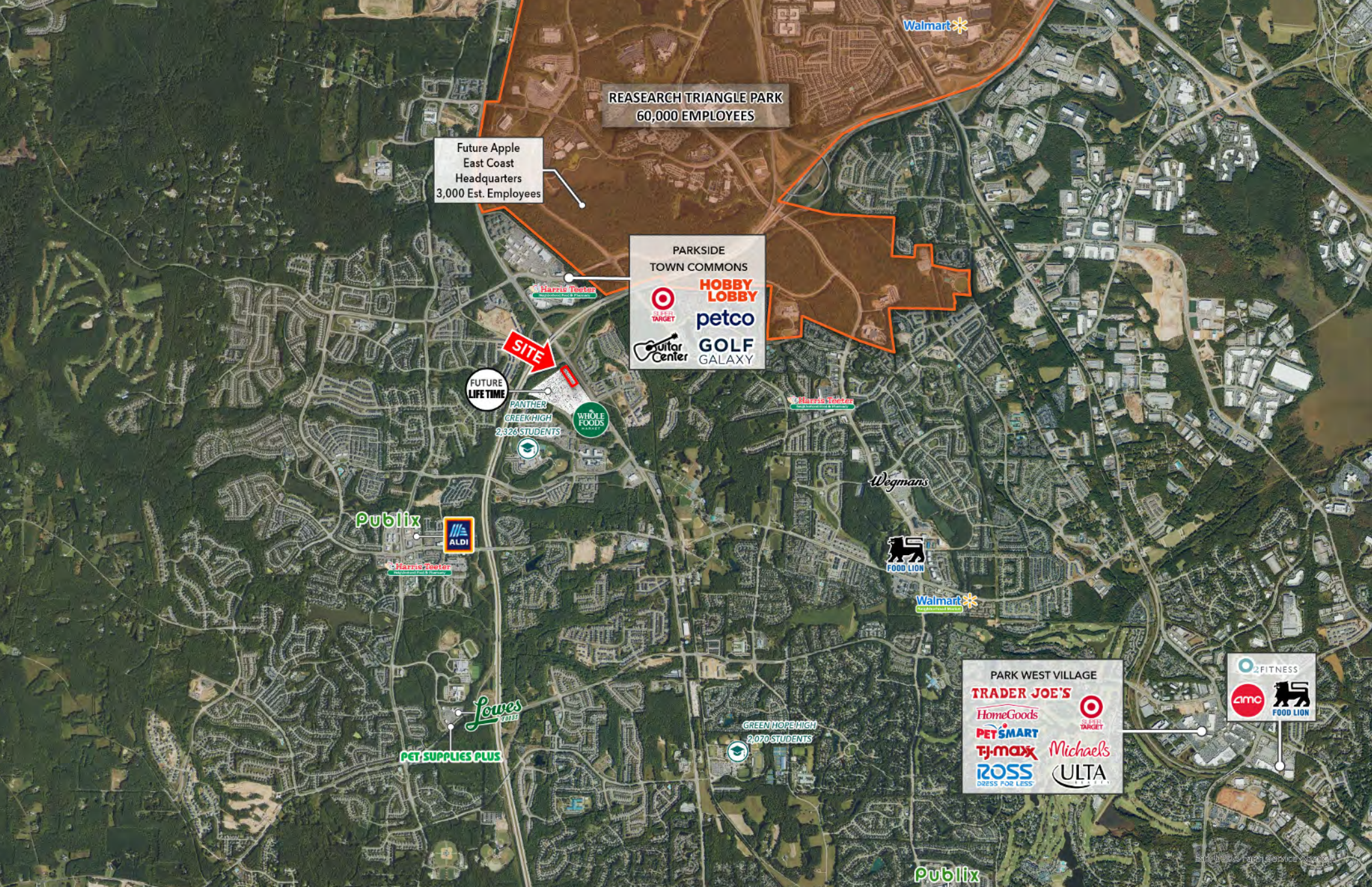
ALSTON TOWN CENTER PHASE II

NC 55 & HIGHCROFT DR, CARY NC 27519

AVAILABLE



TSCG



AREA OVERVIEW



PROPERTY OVERVIEW

Alston Town Center Phase II is a high-visibility retail development at NC Highway 55 & Highcroft Drive in Cary, NC. Ideally, located in the northwest pocket of Cary that continues to see immense residential growth and caters to surrounding major employers found in the Research Triangle Park such as Cisco, NetApp RTP, Biogen and Lenovo.

PROPERTY HIGHLIGHTS

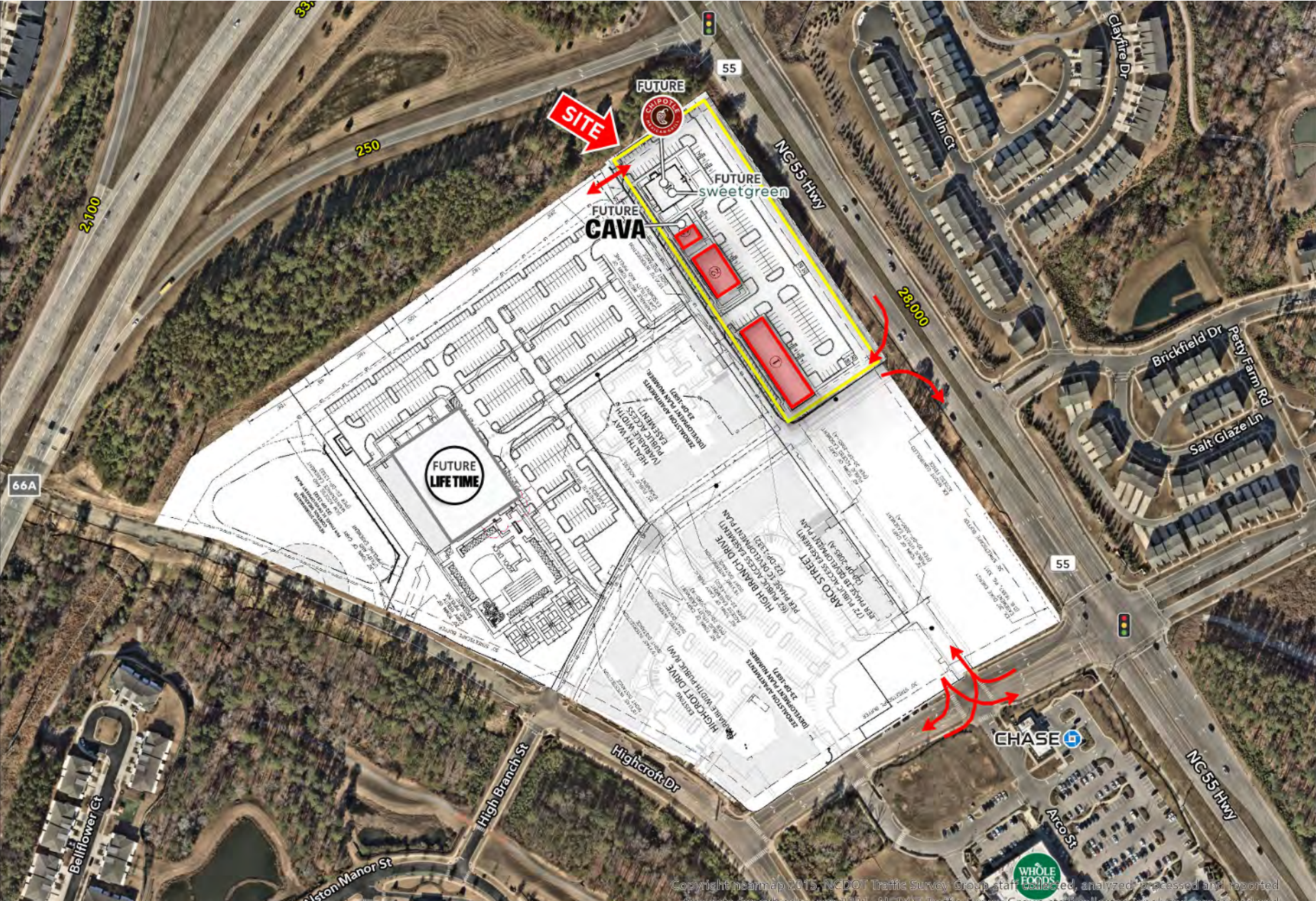
- Up to 10,000 SF Available
- The site is positioned along NC HWY 55 (28,000 VPD) and offers close access to I-540 (40,000 VPD)
- The center is adjacent to key retailers such as Whole Foods Market, Target, Harris Teeter, and a brand new Lifetime Fitness that will shadow anchor the property
- Positioned near NC-540 and Research Triangle Park, the development offers convenient access to a rapidly growing population, boasting a 3.52% annual growth rate

DEMOGRAPHICS

| | 1 MILE | 3 MILES | 5 MILES |
|--|-----------|-----------|-----------|
|  2025 Population Density | 11,087 | 76,914 | 147,368 |
|  2025 Daytime Population | 4,181 | 26,772 | 98,010 |
|  2025 Average HH Income | \$180,144 | \$190,482 | \$180,907 |



SITE PLAN



EXCLUSIVE AGENT(S):

CONTACT



TYLER QUINN

tyler.quinn@tscg.com
919.380.8041

JEFF NIMMER, CCIM

jeff.nimmer@tscg.com
919.380.8041

TAYLOR DROUILLARD

taylor.drouillard@tscg.com
919.380.8041

4601 SIX FORKS RD
SUITE 405
RALEIGH, NC 27609
919.380.8041
TSCG.COM

