

FOR SALE

3005 East Main Street, Waterbury, CT

MATTHEWS COMMERCIAL PROPERTIES



PROFESSIONAL / OFFICE / RETAIL/ MEDICAL BUILDING

- 3,000 SF+/- Freestanding Building
- Former His & Hers Salon & Day Spa (2,000 SF+/-)
- Deli - 1,000 SF+/- Leased \$1,500.00 PM / month-to-month
- Separate Utilities
- .31 Acres +/-
- Excellent access to I-84 - .5 Miles
- Great On-Site Parking
- SALES PRICE: \$495,000.00

Contact:
GERRY MATTHEWS
matthewscre@gmail.com
203.753.5800

MATTHEWS COMMERCIAL PROPERTIES
819 Straits Tpke, Suite 3B, Middlebury, CT 06762
matthewscommercial.com

FOR SALE

3005 East Main Street, Waterbury, CT

MATTHEWS COMMERCIAL PROPERTIES

BUILDING INFO

Total Available SF	3,000 SF+/-
Number of Floors	1
Ceiling Height	8'
Roof	Rubber
Interior Construction	Finished
Exterior Construction	Brick/Block Backup
Parking	In Common
Zoning	CA

PROPERTY

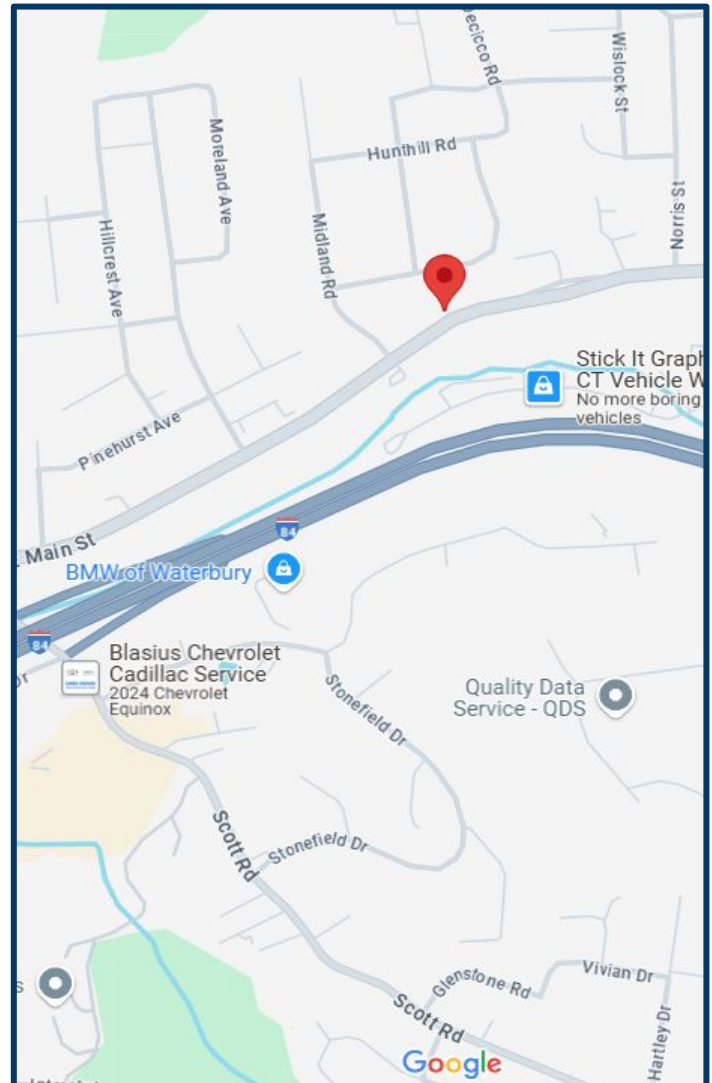
Distance to I-84	.5 Miles
------------------	----------

MECHANICALS & UTILITIES

Electric	Eversource 2 / 200 Amp, 3 Phase
Gas	Eversource
Sewer	City
Water	City
Air Conditioning	Central Air 5 Ton and 3 Ton Units
Type of Heat	Gas - Forced Air

TAXES

Appraised Value	\$242,300.00
Mill Rate	54.19
Taxes	\$9,191.66
Sales Price	\$495,000.00



MATTHEWS COMMERCIAL PROPERTIES LLC

819 Straits Tpke, Suite 3B

Middlebury, CT 06762

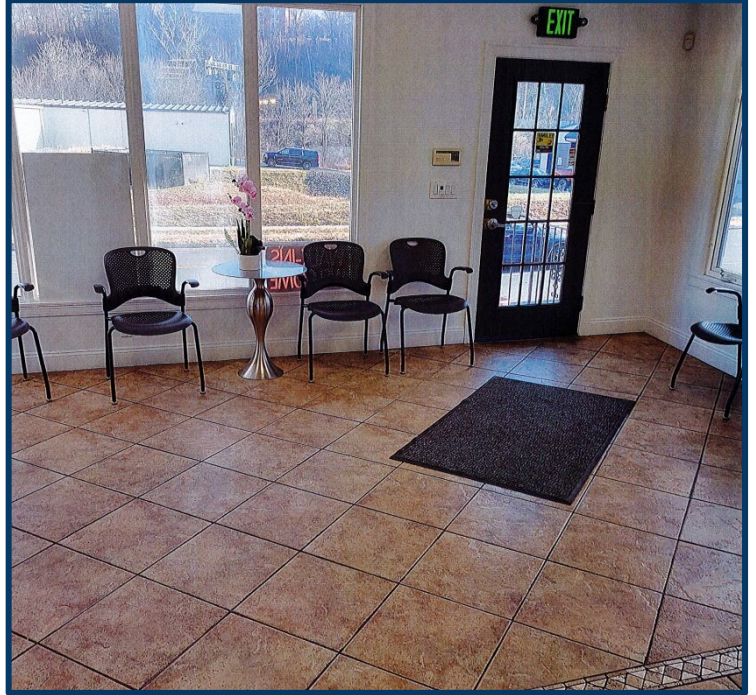
matthewscommercial.com

CONTACT: GERRY MATTHEWS 203-753-5800

FOR SALE

3005 East Main Street, Waterbury, CT

MATTHEWS COMMERCIAL PROPERTIES



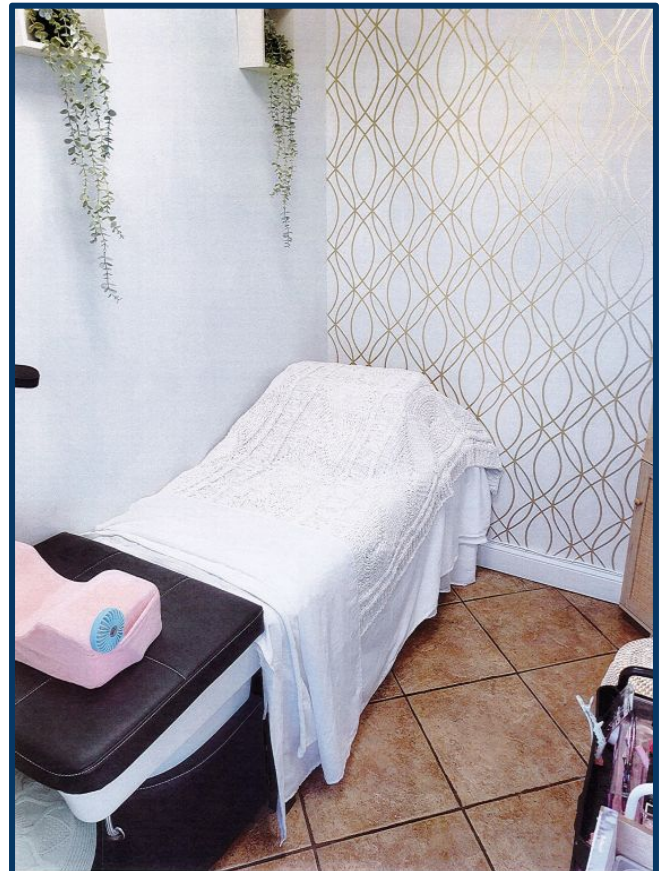
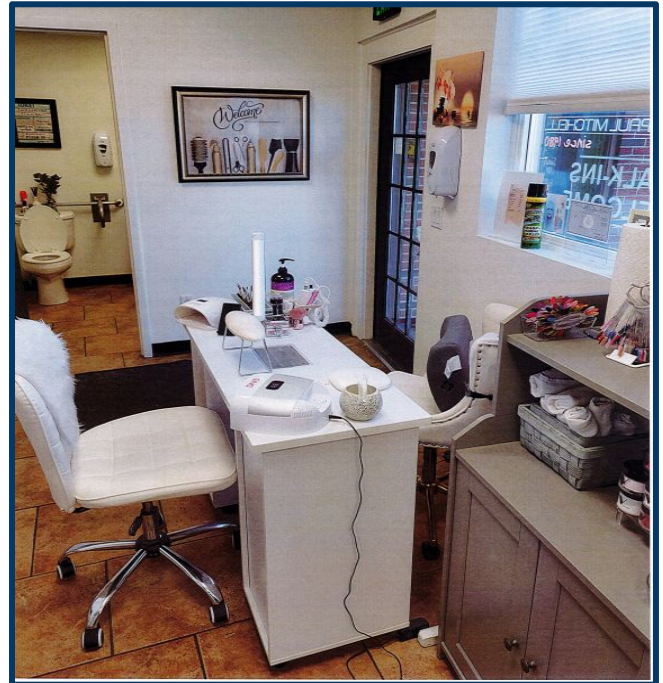
CONTACT: GERRY MATTHEWS 203-753-5800

MATTHEWS COMMERCIAL PROPERTIES LLC
819 Straits Tpke, Suite 3B
Middlebury, CT 06762
matthewscommercial.com

FOR SALE

3005 East Main Street, Waterbury, CT

MATTHEWS COMMERCIAL PROPERTIES



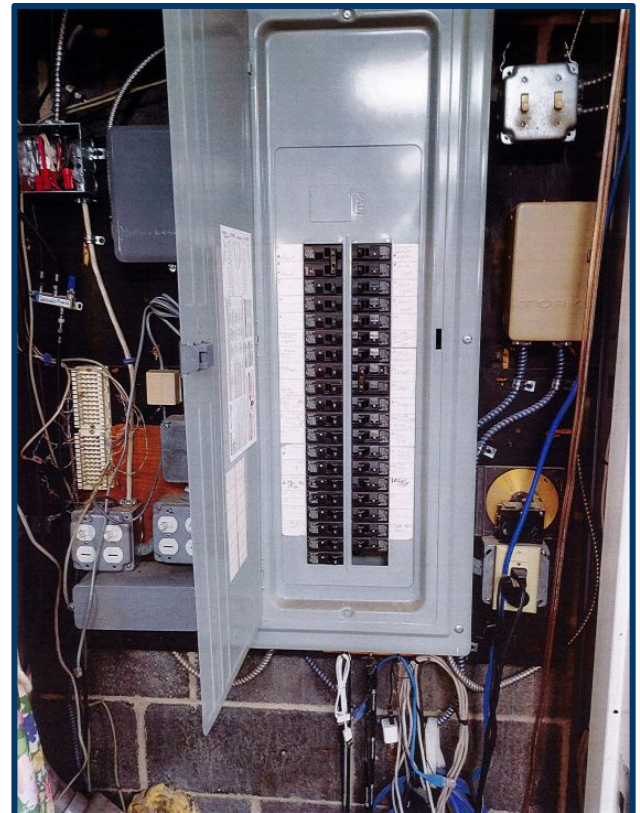
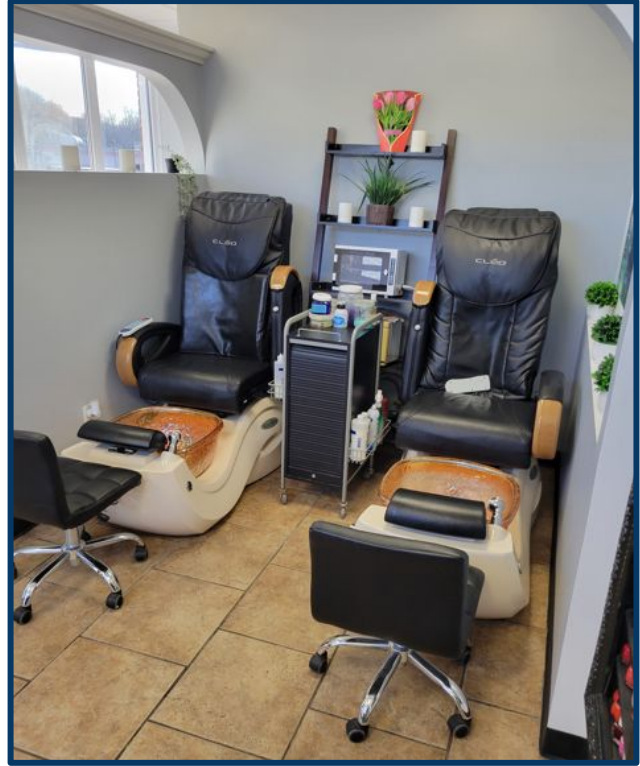
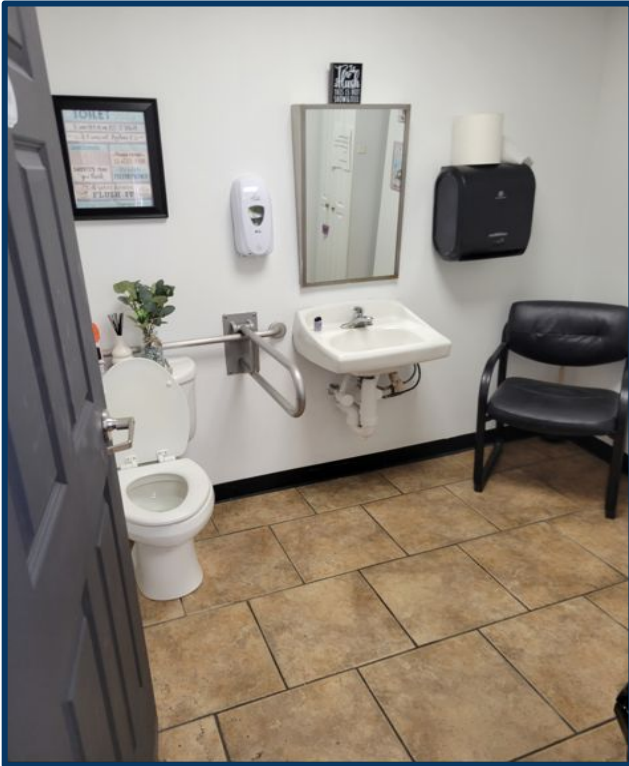
CONTACT: GERRY MATTHEWS 203-753-5800

MATTHEWS COMMERCIAL PROPERTIES LLC
819 Straits Tpke, Suite 3B
Middlebury, CT 06762
matthewscommercial.com

FOR SALE

3005 East Main Street, Waterbury, CT

MATTHEWS COMMERCIAL PROPERTIES



MATTHEWS COMMERCIAL PROPERTIES LLC

819 Straits Tpke, Suite 3B

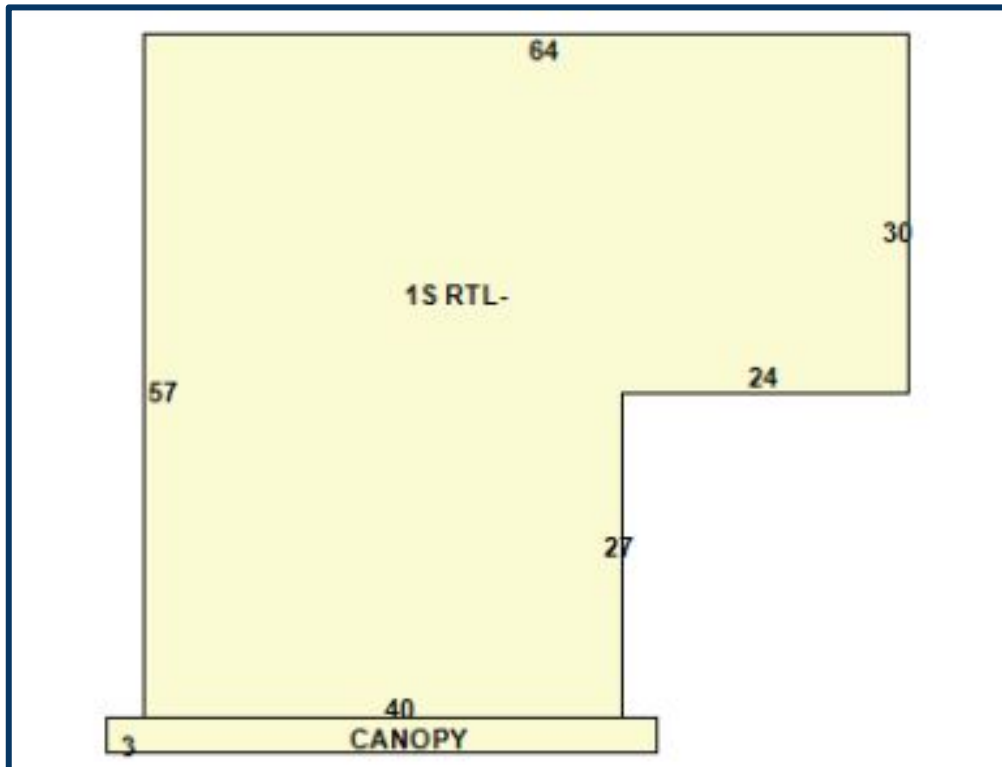
Middlebury, CT 06762

matthewscommercial.com

CONTACT: GERRY MATTHEWS 203-753-5800

FOR SALE

3005 East Main Street, Waterbury, CT



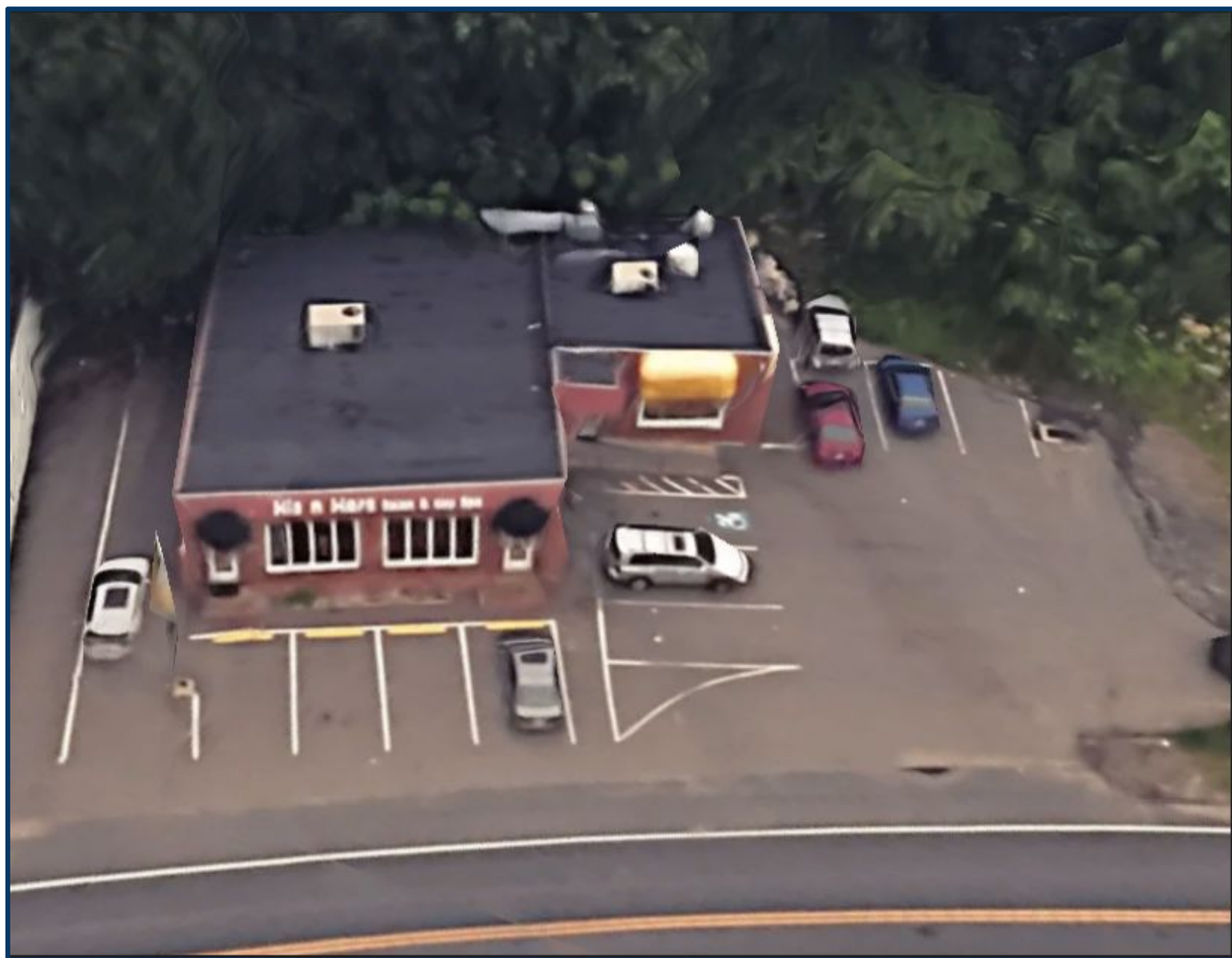
CONTACT: GERRY MATTHEWS 203-753-5800

MATTHEWS COMMERCIAL PROPERTIES LLC
819 Straits Tpke, Suite 3B
Middlebury, CT 06762
matthewscommercial.com

FOR SALE

3005 East Main Street, Waterbury, CT

MATTHEWS COMMERCIAL PROPERTIES



CONTACT: GERRY MATTHEWS 203-753-5800

MATTHEWS COMMERCIAL PROPERTIES LLC
819 Straits Tpke, Suite 3B
Middlebury, CT 06762
matthewscommercial.com