



2924 WEST FAIRMOUNT AVENUE

PHOENIX, ARIZONA 85017

4,100 Square Feet

\$1.05 Per Square Foot, Modified Gross

10' x 10' Garage Door Loading

100% HVAC

Flexible Industrial Park Zoning

Common Fenced Parking

3 Phase Power

Minimal Office



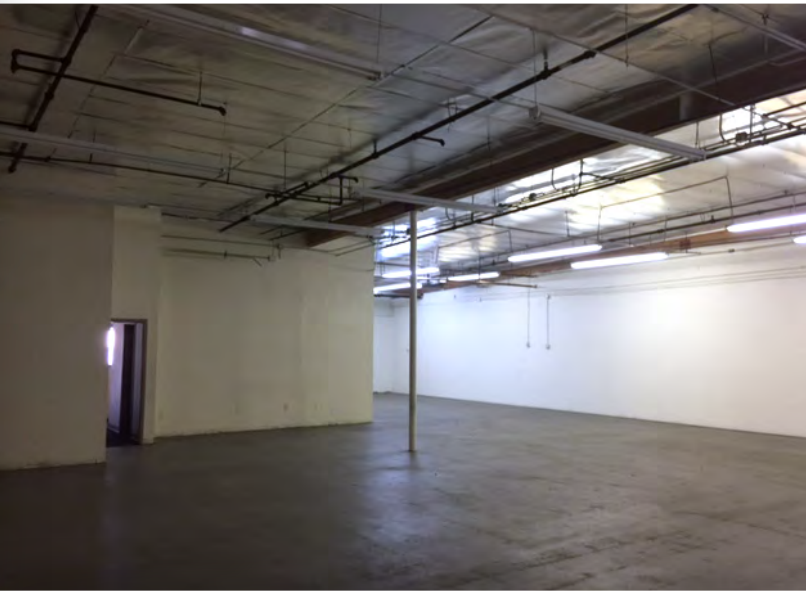
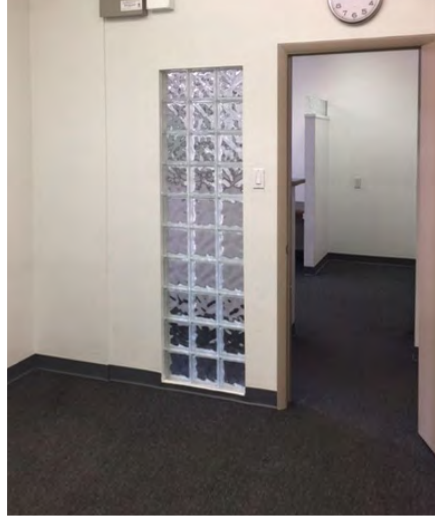
Adam Shteir

Partner
602.769.0521
adam@citywidecre.com

Jack Scanlan

Associate Broker
602.672.4546
jack@citywidecre.com

2122 East Highland Avenue, Suite 225 • Phoenix, Arizona 85016 • 602.313.1000 • citywidecre.com



Adam Shteir

Partner
602.769.0521
adam@citywidecre.com

Jack Scanlan

Associate Broker
602.672.4546
jack@citywidecre.com

2122 East Highland Avenue, Suite 225 • Phoenix, Arizona 85016 • 602.313.1000 • citywidecre.com



Adam Shteir

Partner
602.769.0521
adam@citywidecre.com

Jack Scanlan

Associate Broker
602.672.4546
jack@citywidecre.com

2122 East Highland Avenue, Suite 225 • Phoenix, Arizona 85016 • 602.313.1000 • citywidecre.com