

1.36 Acres US 23

South Bloomfield, Ohio 43103

FOR SALE/LEASE/ BUID-TO-SUIT



- **1.36 Acres**
- **For Sale/Lease/Build-to-Suit**
- Frontage on US 23
- Traffic Counts of 34,000+ VPD
- Strong visibility
- Zoned Highway Commercial
- High residential growth area – approx. 1,000 new homes to be constructed within 1 mile radius
- Village of South Bloomfield is halfway point between Columbus & Circleville

Contact:

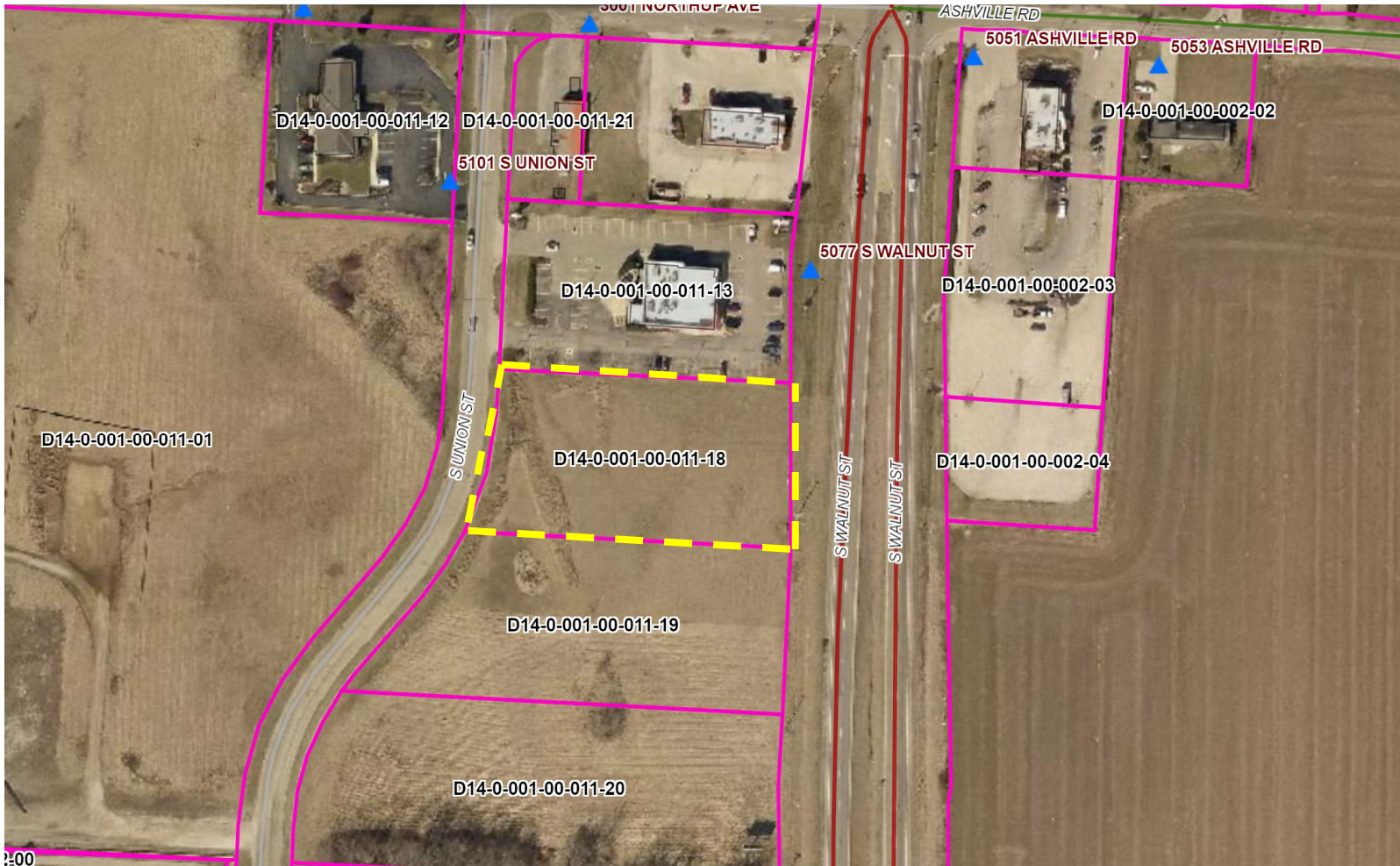
Courtney Carper
360 Real Estate Advisors
614-832-4127

Courtney@360REAdvisors.com

1.36 Acres US 23

South Bloomfield, Ohio 43103

Aerial Overview

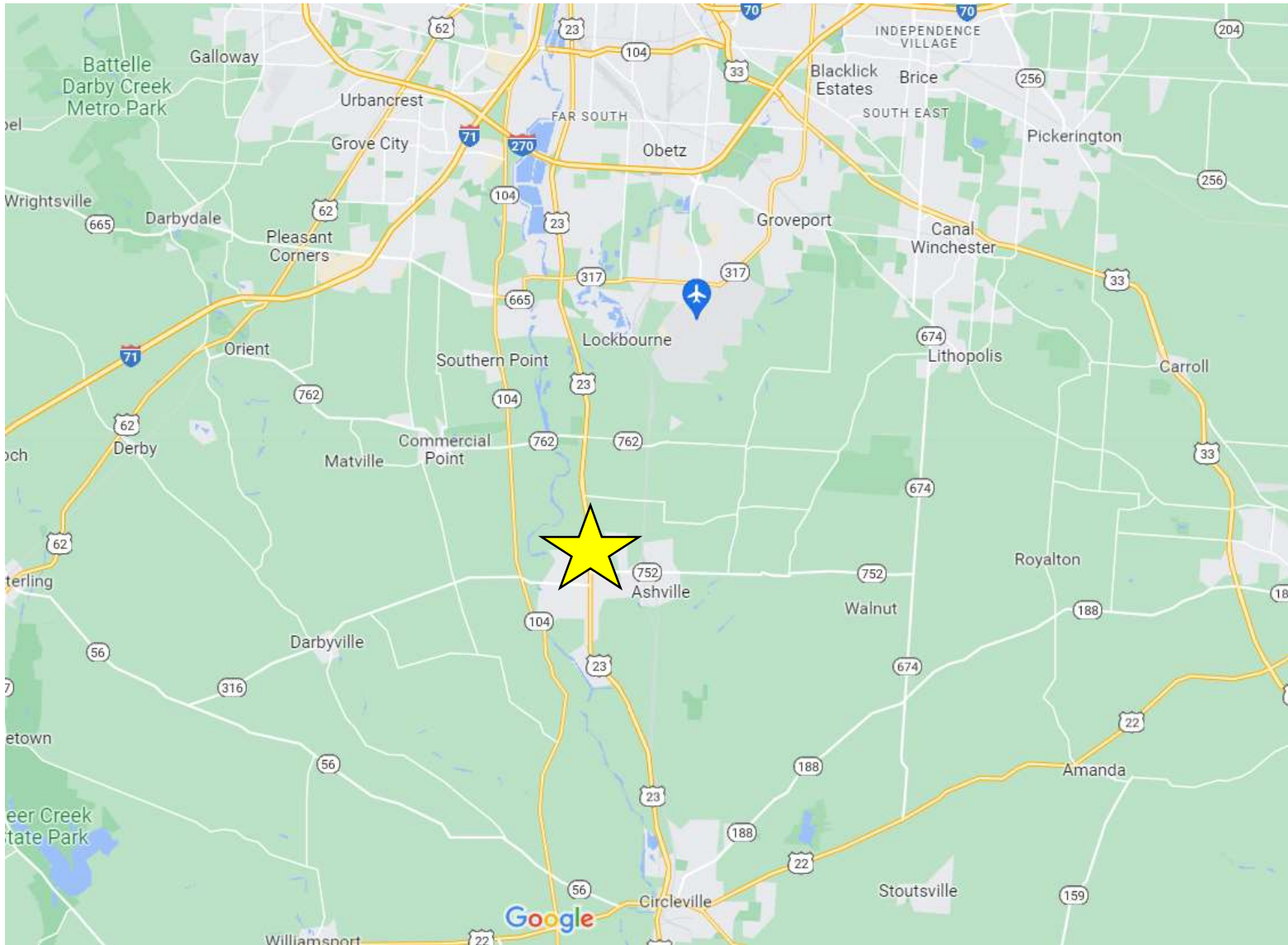


1.36 Acres

US 23

South Bloomfield, Ohio 43103

Location Map



1.36 Acres

US 23

South Bloomfield, Ohio 43103

Aerial



1.36 Acres

US 23

South Bloomfield, Ohio 43103

Demographics



	5 miles	10 miles	15 miles
Population			
2010 Population	10,407	52,173	224,989
2020 Population	11,431	57,024	247,220
2024 Population	12,302	59,960	256,655
2029 Population	13,251	62,416	264,048
Households			
2024 Wealth Index	105	101	86
2010 Households	3,911	19,372	83,854
2020 Households	4,344	21,287	93,312
2024 Households	4,730	22,608	97,984
2029 Households	5,194	23,770	101,913
Median Household Income			
2024 Median Household Income	\$85,626	\$78,769	\$75,917
2029 Median Household Income	\$97,119	\$95,812	\$87,768
2024-2029 Annual Rate	2.55%	4.00%	2.94%
Average Household Income			
2024 Average Household Income	\$115,067	\$108,144	\$99,893
2029 Average Household Income	\$131,864	\$125,744	\$117,100
2024-2029 Annual Rate	2.76%	3.06%	3.23%
Housing			
2024 Housing Affordability Index	142	109	103
2010 Total Housing Units	4,256	20,990	91,479
2010 Owner Occupied Housing Units	2,850	14,209	58,836
2010 Renter Occupied Housing Units	1,062	5,162	25,018
2010 Vacant Housing Units	345	1,618	7,625
2020 Total Housing Units	4,585	22,615	98,782
2020 Owner Occupied Housing Units	3,206	15,573	63,314
2020 Renter Occupied Housing Units	1,138	5,714	29,998
2020 Vacant Housing Units	243	1,351	5,515
2024 Total Housing Units	4,982	23,896	103,764
2024 Owner Occupied Housing Units	3,569	16,887	67,500
2024 Renter Occupied Housing Units	1,161	5,721	30,484
2024 Vacant Housing Units	252	1,288	5,780
2029 Total Housing Units	5,454	25,037	107,607
2029 Owner Occupied Housing Units	3,854	17,881	70,580
2029 Renter Occupied Housing Units	1,339	5,890	31,333
2029 Vacant Housing Units	260	1,267	5,694