



**NOW
LEASING**

— 490 N MAIN STREET PITTSTON, PA 18640

FIND YOUR DREAM SPACE!

We are proud to offer over 3,600 SF of fully customizable office or medical space. With ample parking, 24/7 security, a convenient location, and endless possibilities, this is the perfect location for your business's home.



CONTACT:

✉ LEASING@INSALACODEV.COM

📞 570-883-0936 X 324

📍 WWW.INSALACODEV.COM

ABOUT 490 N MAIN

Looking to expand operations in the Greater Scranton/ Wilkes-Barre Area? **490 North Main Street is the perfect location for you!**

The building is currently undergoing cosmetic **renovations** to the exterior appearance, common areas, and new office space. The property is proud to offer ample parking for your team and clients while being steps away from the growing **Downtown Pittston Business District**. The 2nd floor office space is easily accessible by our elevator and has been gutted to offer a blank slate allowing you to design a workspace that meets your **SPECIFIC** needs!

PROPERTY HIGHLIGHTS:

- Prime location with high visibility and traffic counts
- Ample on-site parking for employees and visitors
 - 24/7 maintenance hotline
 - Property management team on-site
- Renovations in progress to enhance the building's appeal
- Flexible office layouts to suit various business requirements
- Close proximity to public transport, restaurants, and shops

Embrace the chance to create your ideal office environment in a thriving location!

Contact us TODAY for more information and to arrange a tour.



CONTACT:

✉ LEASING@INSALACODEV.COM

📞 570-883-0936 X 324

🌐 WWW.INSALACODEV.COM

PHOTOS OF 490 N MAIN



Exterior Renovation



New Lobby Designs



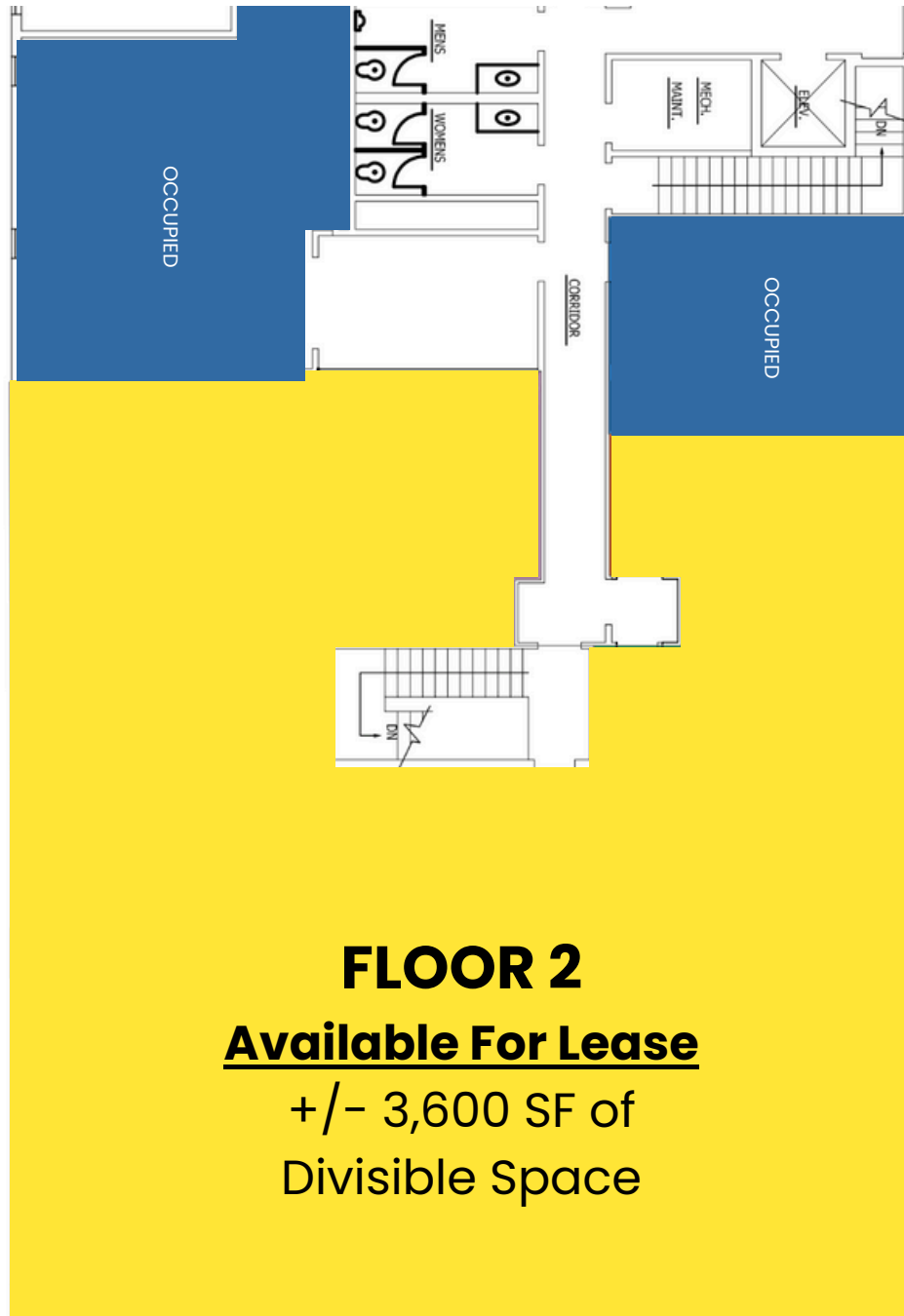
CONTACT:

✉ LEASING@INSALACODEV.COM

☎ 570-883-0936 X 324

♡ WWW.INSALACODEV.COM

UNIT AVAILABILITY AT 490 N MAIN



CONTACT:

✉ LEASING@INSALACODEV.COM

📞 570-883-0936 X 324

❤ WWW.INSALACODEV.COM