

**BRIGHTON INDUSTRIAL RANCH**

**25,000 – 150,000 SF**  
**BUILD TO SUIT**  
**FOR SALE OR LEASE**



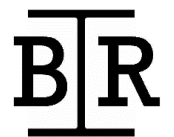
#BuildBetter



Schafer Construction, Inc.



**OUTDOOR STORAGE AVAILABLE | 34.2 ACRES**

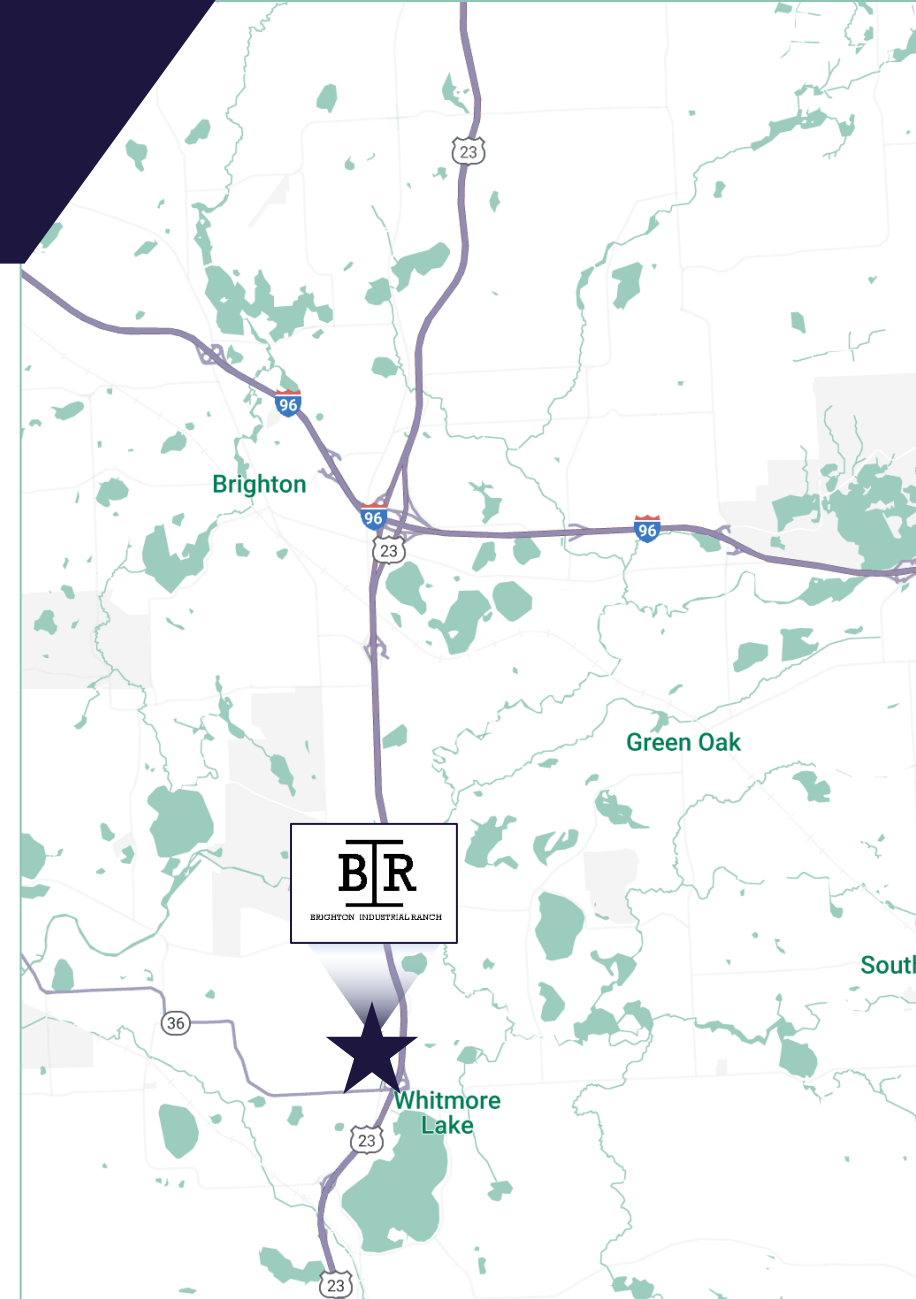


BRIGHTON INDUSTRIAL RANCH

# BRIGHTON INDUSTRIAL RANCH

## PROPERTY OVERVIEW

Building Size:	25,000 SF – 150,000 SF
Zoning:	Light industrial
Outdoor Storage:	Contractor and material storage permitted
Type:	Build to suit, sale or lease
Site Plan:	Flexible site plan (will subdivide and design to meet specific needs)
Zoning:	Light industrial
Parking:	Ample truck parking
Developer:	Schafer Construction
Parcels:	16-29-400-013, 16-29-300-027, 16-29-400-003
Site Conditions:	Cleared and graded with private road easement in place
Freeway Access:	Immediate Access to US 23 (0.62 miles from US 23 exiting NB, 0.23 miles from US 23 exiting SB)
Mailing Address:	Brighton
Township:	Green Oak Township



### Population

3 Miles

18,957

5 Miles

42,414



### Households

7,530

16,643



### Workforce

4,087

12,540

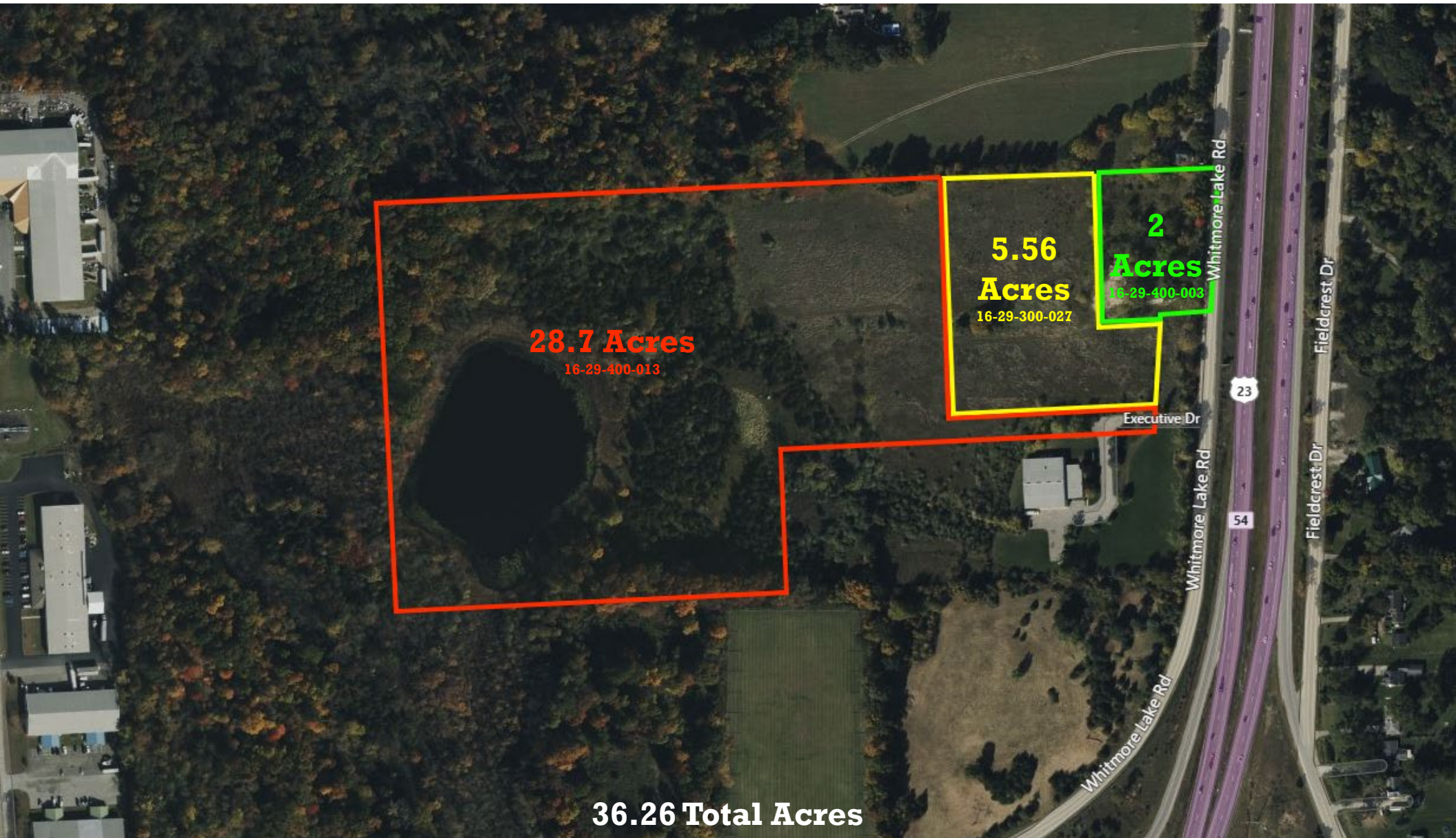


BRIGHTON INDUSTRIAL RANCH



# BRIGHTON INDUSTRIAL RANCH

## PROPERTY OVERVIEW





# BRIGHTON INDUSTRIAL RANCH

## ABOUT SCHAFER CONSTRUCTION



Schafer Construction has been providing development, design, and construction services in Southeast Michigan for over 25 years. We are a team of fiercely competitive real estate and construction professionals who are committed to Build Better. We believe only in the right solutions – whether those involve the Schafer Team or not. Development and construction are the ultimate team sports. We work exclusively with individuals and organizations who are willing to put the good of the project above any individual interest.

The Schafer Team has overseen over 2,000 acres of land development. From site searches to land acquisition, entitlements, and ultimately building development, Schafer can lead every facet of a new real estate venture. Whether it's an entrepreneurial investment opportunity or a critical need for your operating business, the Schafer Team is here to take the guesswork out of the highly complex and risky process of developing land.

[www.schaferconstruction.net](http://www.schaferconstruction.net)

### SCHAFER CONSTRUCTION PROJECT SECTORS

- Flex / R&D
- Warehousing & Light Industrial
- Mixed Use
- Athletic Facilities
- Commercial Office
- Municipal & County Facilities







BRIGHTON INDUSTRIAL RANCH

## FOR MORE INFORMATION, CONTACT:

### STEVE KOZAK

Director

+1 248 358 6107

[steve.kozak@cushwake.com](mailto:steve.kozak@cushwake.com)

### KYLE PASSAGE

Director

+1 248 358 6113

[kyle.passage@cushwake.com](mailto:kyle.passage@cushwake.com)

©2025 Cushman & Wakefield. All rights reserved. The information contained in this communication is strictly confidential. This information has been obtained from sources believed to be reliable but has not been verified. NO WARRANTY OR REPRESENTATION, EXPRESS OR IMPLIED, IS MADE AS TO THE CONDITION OF THE PROPERTY (OR PROPERTIES) REFERENCED HEREIN OR AS TO THE ACCURACY OR COMPLETENESS OF THE INFORMATION CONTAINED HEREIN, AND SAME IS SUBMITTED SUBJECT TO ERRORS, OMISSIONS, CHANGE OF PRICE, RENTAL OR OTHER CONDITIONS, WITHDRAWAL WITHOUT NOTICE, AND TO ANY SPECIAL LISTING CONDITIONS IMPOSED BY THE PROPERTY OWNER(S). ANY PROJECTIONS, OPINIONS OR ESTIMATES ARE SUBJECT TO UNCERTAINTY AND DO NOT SIGNIFY CURRENT OR FUTURE PROPERTY PERFORMANCE.



#BuildBetter



Schafer Construction, Inc.