

FOR LEASE

12 EAST SIR FRANCIS DRAKE BOULEVARD

Larkspur, CA 94939



The information herein has not been independently verified by the real estate brokers. Interested parties should have experts of their choice inspect and verify all information. Real estate brokers are not experts with respect to building construction, environmental, legal, tax, and other such matters.



SAMUEL KO

CA LIC #01894341

(415) 259-9642

sam@meridiancommercial.com

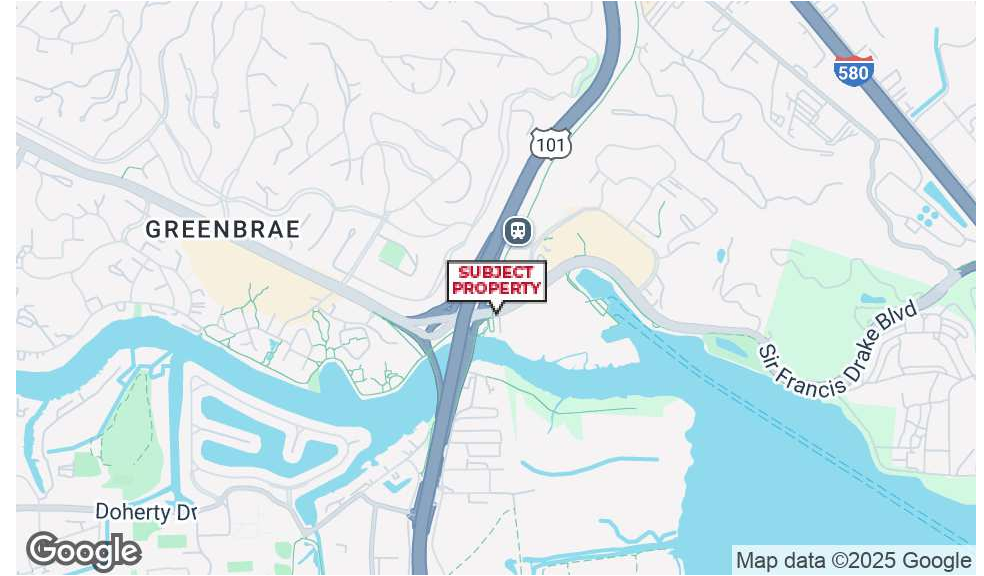
17 E. Sir Francis Drake Blvd., Suite 203 | Larkspur, CA 94939 | <https://www.meridiancommercial.com>

FOR LEASE

Property Summary

12 EAST SIR FRANCIS DRAKE BOULEVARD

Larkspur, CA 94939



PROPERTY DESCRIPTION

Creative office spaces with many past and current tenants including Netflix, Joe Boxer, etc. On-site parking provided. Tenant pays PG&E. Private bay and kayak access with on-site picnic benches for tenant's use. Creative office space in a very unique Marin setting.

PROPERTY HIGHLIGHTS

- Unique Creative Offices
- Prime Central Marin Location
- Walking Distance to Marin Country Mart
- Walkable to SF Ferry and SMART Train

LOCATION DESCRIPTION

Prime central Marin location with everything you need within walking distance. Conveniently located across from the Marin Country Mart with great lunch and coffee options. Within walking distance to the Golden Gate Ferry and SMART train. Easy access to highway 101 and the Richmond San Rafael bridge. With bike paths and pedestrian bridges accessed directly from the property makes this one of Marin's best office locations.

OFFERING SUMMARY

Lease Rate:	\$3.95 SF/month (Gross)
Available SF:	±750 - 2,800 SF
Building Size:	±14,042 SF
Property Type:	Office

SAMUEL KO

CA LIC #01894341
(415) 259-9642

sam@meridiancommercial.com



FOR LEASE

Lease Spaces

12 EAST SIR FRANCIS DRAKE BOULEVARD

Larkspur, CA 94939

LEASE INFORMATION

Lease Type:	Gross	Lease Term:	Negotiable
Total Space:	750 - 2,800 SF	Lease Rate:	\$3.95 SF/month

AVAILABLE SPACES

SUITE	TENANT	SIZE (SF)	LEASE TYPE	LEASE RATE	DESCRIPTION
12-A	Available	2,800 SF	Gross	\$3.95 SF/month	Two story space with a private office on each floor, great natural windows and many operatable windows.
12-B	Available	1,159 SF	Gross	\$3.95 SF/month	Beautifully built out suite with open air ceilings and nice views of Mount Tam and the waterfront. Suite boasts a large kitchen space that was used as a photo studio for food items.
12-E	Available	750 SF	Gross	\$3.95 SF/month	Two private offices, kitchen and a large open with high ceilings and great natural light.
12-G	Available	800 SF	Gross	\$3.95 SF/month	Two private offices with high ceilings throughout the space and very good natural light.
14-D	Available	1,305 SF	Gross	\$3.95 SF/month	Open spacious floor plan with high ceilings, one private office, kitchenette and bathroom. Two entrances to the space.

SAMUEL KO

CA LIC #01894341

(415) 259-9642

sam@meridiancommercial.com

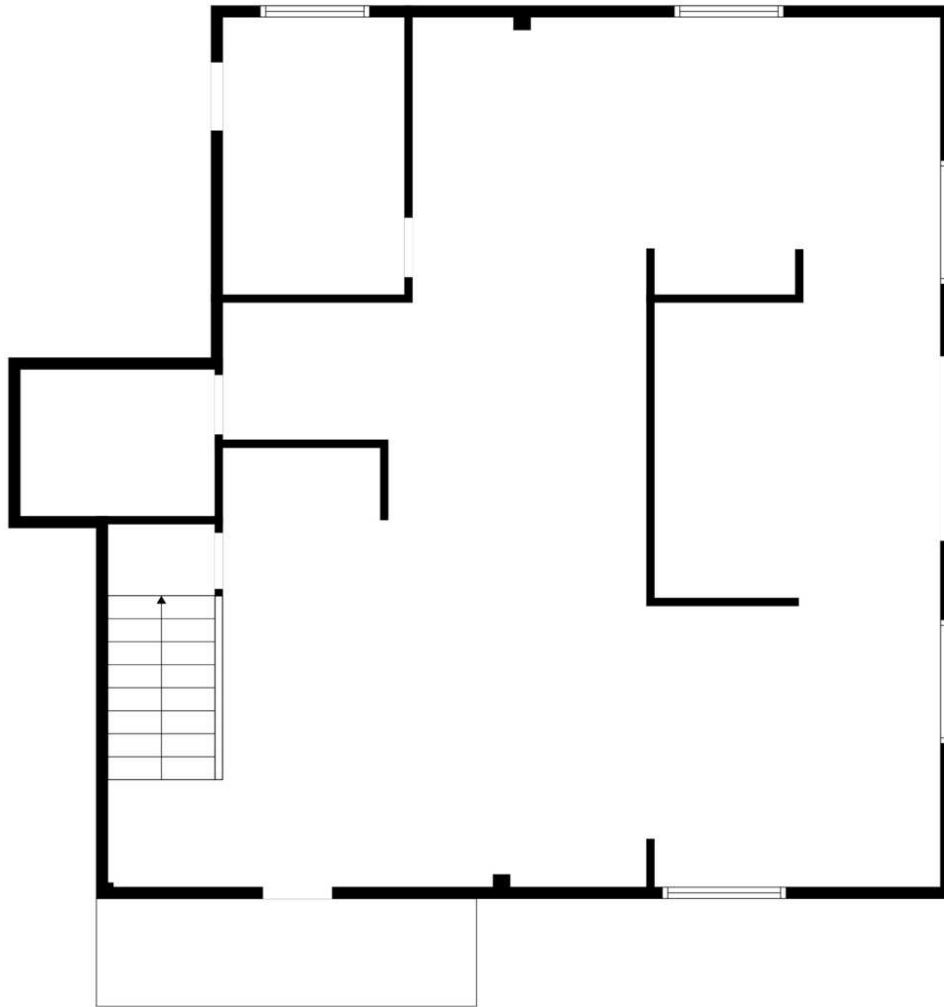


FOR LEASE

12-A Floor Plans

12 EAST SIR FRANCIS DRAKE BOULEVARD

Larkspur, CA 94939



FLOOR 1



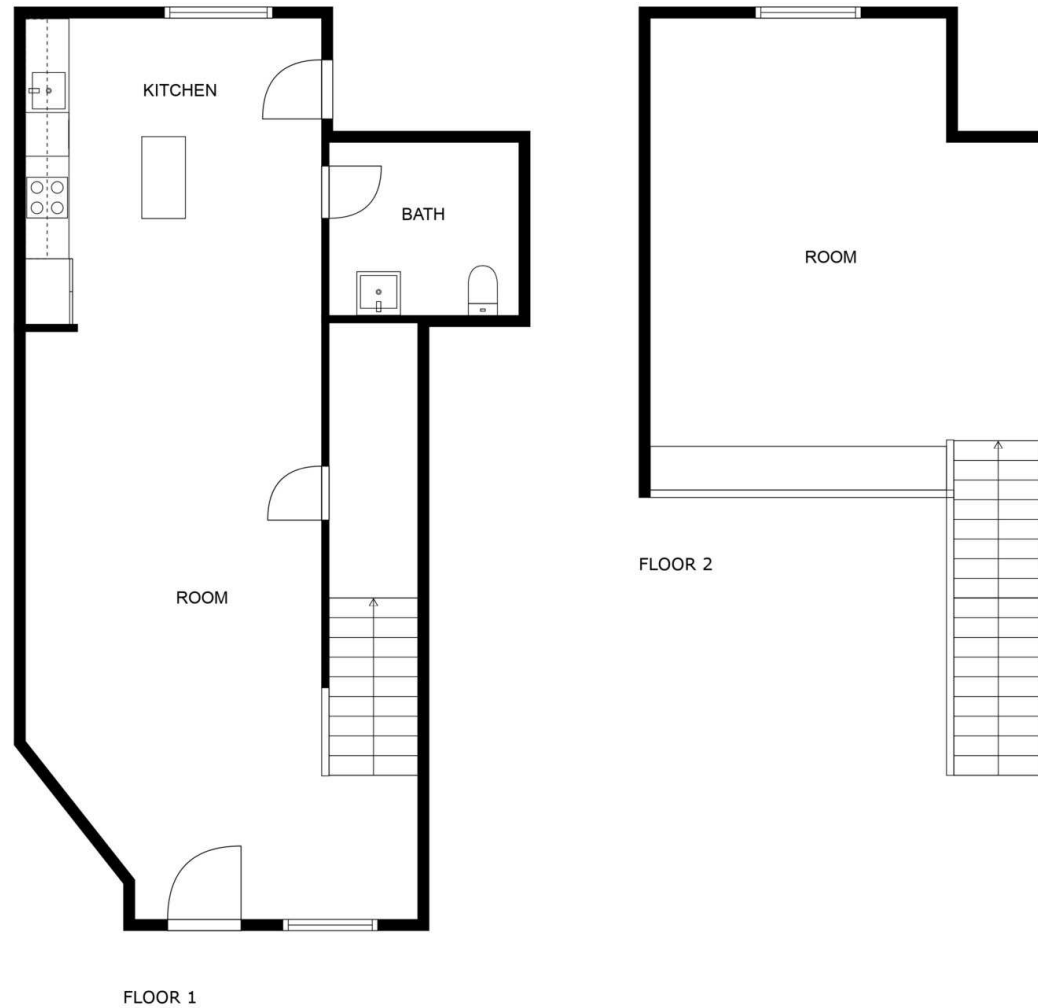
FLOOR 2

FOR LEASE

12-B

12 EAST SIR FRANCIS DRAKE BOULEVARD

Larkspur, CA 94939



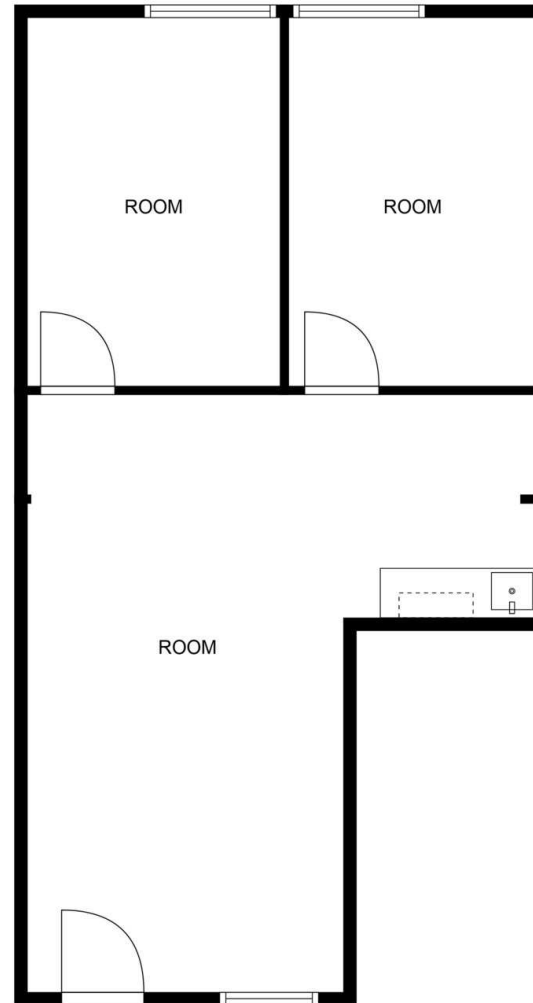
FLOOR PLAN CREATED BY CUBICASA APP. MEASUREMENTS DEEMED HIGHLY RELIABLE BUT NOT GUARANTEED.

FOR LEASE

12-E Floor Plan

12 EAST SIR FRANCIS DRAKE BOULEVARD

Larkspur, CA 94939



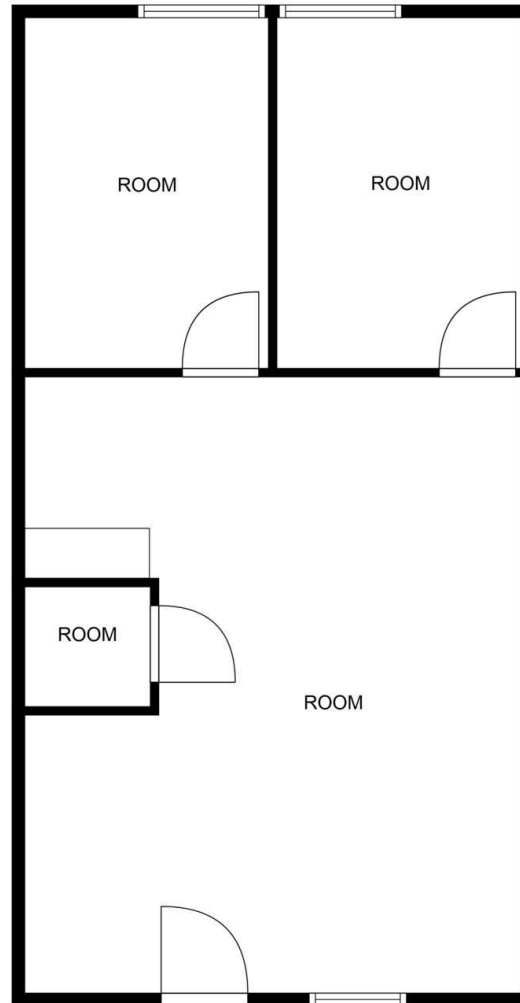
FLOOR PLAN CREATED BY CUBICASA APP. MEASUREMENTS DEEMED HIGHLY RELIABLE BUT NOT GUARANTEED.

FOR LEASE

12-G

12 EAST SIR FRANCIS DRAKE BOULEVARD

Larkspur, CA 94939



FLOOR PLAN CREATED BY CUBICASA APP. MEASUREMENTS DEEMED HIGHLY RELIABLE BUT NOT GUARANTEED.

SAMUEL KO

CA LIC #01894341

(415) 259-9642

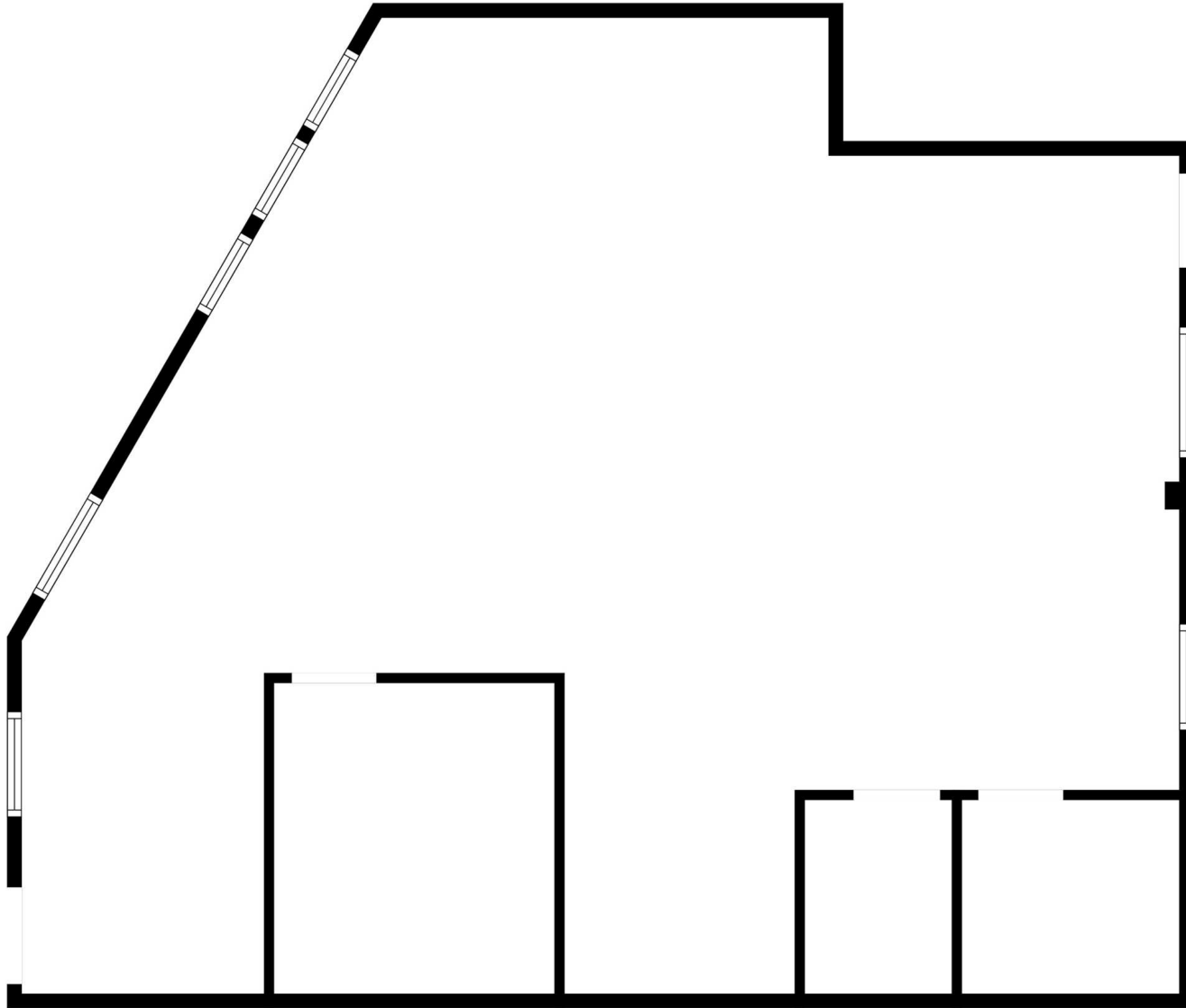
sam@meridiancommercial.com

FOR LEASE

14-D Floor Plans

12 EAST SIR FRANCIS DRAKE BOULEVARD

Larkspur, CA 94939



SAMUEL KO

CA LIC #01894341

(415) 259-9642

sam@meridiancommercial.com



FOR LEASE

Additional Photos

12 EAST SIR FRANCIS DRAKE BOULEVARD

Larkspur, CA 94939



SAMUEL KO

CA LIC #01894341

(415) 259-9642

sam@meridiancommercial.com



17 E. Sir Francis Drake Blvd., Suite 203 | Larkspur, CA 94939 | <https://www.meridiancommercial.com>

FOR LEASE

Location Map

12 EAST SIR FRANCIS DRAKE BOULEVARD

Larkspur, CA 94939



SAMUEL KO

CA LIC #01894341

(415) 259-9642

sam@meridiancommercial.com



17 E. Sir Francis Drake Blvd., Suite 203 | Larkspur, CA 94939 | <https://www.meridiancommercial.com>