

INDUSTRIAL PROPERTY // FOR SALE / LEASE

UP TO 179,000 SF OF HIGH-CEILING WAREHOUSE & MANUFACTURING SPACE AVAILABLE

2253 AIR PARK RD

RHINELANDER, WI 54501



- 86,000 - 179,000 SF Warehouse Space Available
- Trucking, Rail, and Air Freight Hub
- 20,000 SF Office Space
- High Clear Height: 17'-32', Column Spacing: 24' x 60'
- 24 Docks/ 3 Drive-Ins for Distribution
- T8 LED Lighting, AC/Heat throughout
- 480 Volt, 3-Phase- 3-Panel Power, Key Fob Access
- Hytrol Conveyor Belt System



P.A. COMMERCIAL
Corporate & Investment Real Estate

26555 Evergreen Road, Suite 1500

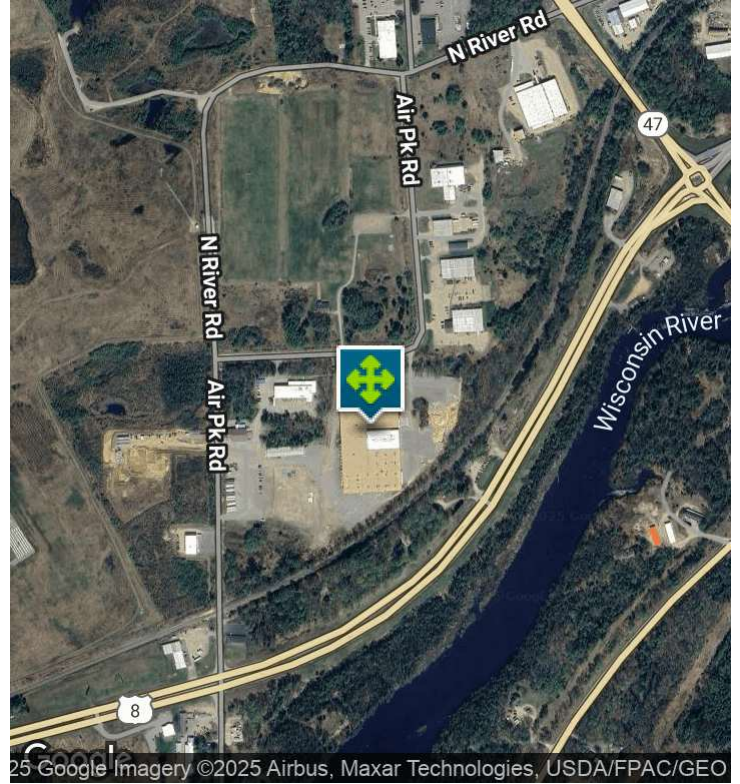
Southfield, MI 48076

248.358.0100

pacommercial.com

We obtained the information above from sources we believe to be reliable. However, we have not verified its accuracy and make no guarantee, warranty or representation about it. It is submitted subject to the possibility of errors, omissions, change of price, rental or other conditions, prior sale, lease or financing, or withdrawal without notice. We include projections, opinions, assumptions or estimates for example only, and they may not represent current, past or future performance of the property. You and your tax and legal advisors should conduct your own investigation of the property and transaction.

EXECUTIVE SUMMARY



Sale Price	CONTACT BROKER
Lease Rate	\$3.95 - 4.50 SF/YR (NNN)

OFFERING SUMMARY

Building Size:	179,000 SF
Available SF:	179,000 SF
Lot Size:	24.28 Acres
Price / SF:	-
Year Built:	1991
Renovated:	2013
Zoning:	Industrial
Submarket:	Wisconsin North Area
Traffic Count:	11,133

PROPERTY OVERVIEW

Available for sale or lease in Rhinelander, WI, this well-maintained warehouse facility offers between 86,000 and 179,000 SF of versatile space, ideal for manufacturing or distribution operations. The property features 24 dock doors, 3 drive-ins, and impressive clear heights ranging from 17' to 32', allowing for efficient logistics and storage. A 20,000 SF office area provides ample room for administrative functions, while the warehouse is equipped with T8 LED lighting, AC/heat throughout, and a conveyor belt system to streamline operations. With 24' x 60' column spacing, heavy power (480V, 3-phase, 3-panel), and secure key fob access, this facility is ready to meet the demands of modern industrial users.

LOCATION OVERVIEW

Rhinelander is a commercial, industrial, and recreational hub in north-central Wisconsin, the Oneida County seat located along U.S. Route 8, which connects Minnesota to Michigan. The city is also not far from U.S. Route 51, a frequently traveled north-south highway between Ironwood, MI, and Wausau, WI. Rhinelander is an intermodal hub with rail, trucking, and 3 air freight operators including FedEx at local airport.

PROPERTY HIGHLIGHTS

- 86,000 - 179,000 SF Warehouse Space Available
- Trucking, Rail, and Air Freight Hub
- 20,000 SF Office Space

2253 AIR PARK RD, RHINELANDER, WI 54501 // FOR SALE / LEASE

INDUSTRIAL DETAILS

Property Type:	Industrial
Building Size:	179,000 SF
Space Available:	86,000 - 179,000 SF
Shop SF:	150,000 SF + 9,000 SF Well-maintained Secondary Outbuilding
Office SF:	20,000 SF
Occupancy:	Immediate
Tenancy:	Single or Multiple
Zoning:	Industrial
Lot Size:	24.28 Acres
Parking Spaces:	Abundant Vehicle Parking
Fenced Yard:	N/A
Trailer Parking:	Yes, Excessive
Rail Access:	Can be added
Year Built / Renovated:	1991 / 2013
Construction Type:	Steel
Clear Height:	17' - 32'
Overhead Doors:	Three (3)
Truckwells/Docks:	24
Cranes:	No
Column Spacing:	24' x 60'
Power:	480 Volt, 3-Phase, 3-Panel
Lighting:	T8 LED
Buss Duct:	No
Air Conditioning:	Yes, Throughout Building
Heat:	Yes, Throughout Building
Sprinklers:	Wet



P.A. COMMERCIAL
Corporate & Investment Real Estate

Kevin Bull SENIOR ASSOCIATE

D: 248.358.5361 | **C:** 248.895.9972

kevin@pacommercial.com

We obtained the information above from sources we believe to be reliable. However, we have not verified its accuracy and make no guarantee, warranty or representation about it. It is submitted subject to the possibility of errors, omissions, change of price, rental or other conditions, prior sale, lease or financing, or withdrawal without notice. We include projections, opinions, assumptions or estimates for example only, and they may not represent current, past or future performance of the property. You and your tax and legal advisors should conduct your own investigation of the property and transaction.

2253 AIR PARK RD, RHINELANDER, WI 54501 // FOR SALE / LEASE

ADDITIONAL PHOTOS



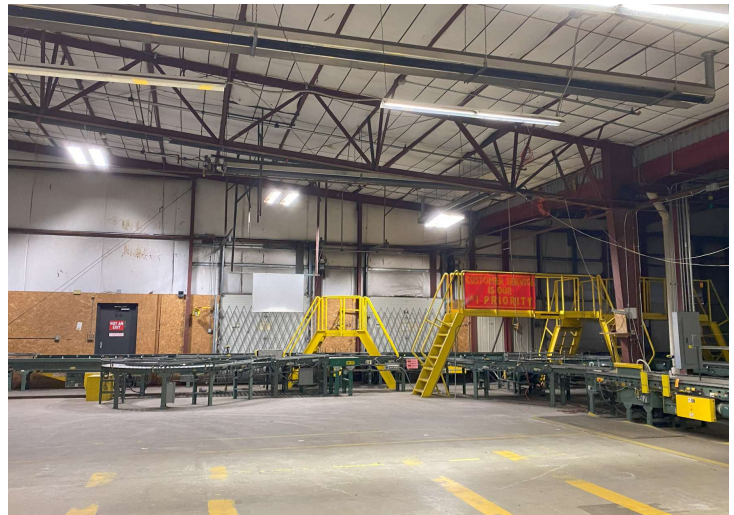
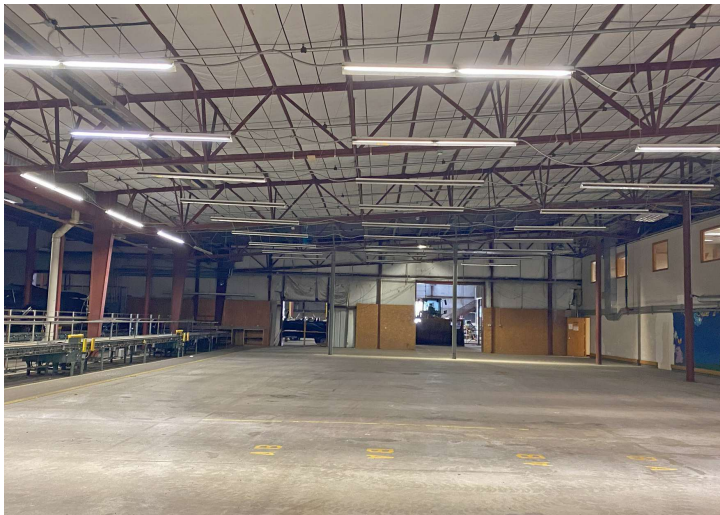
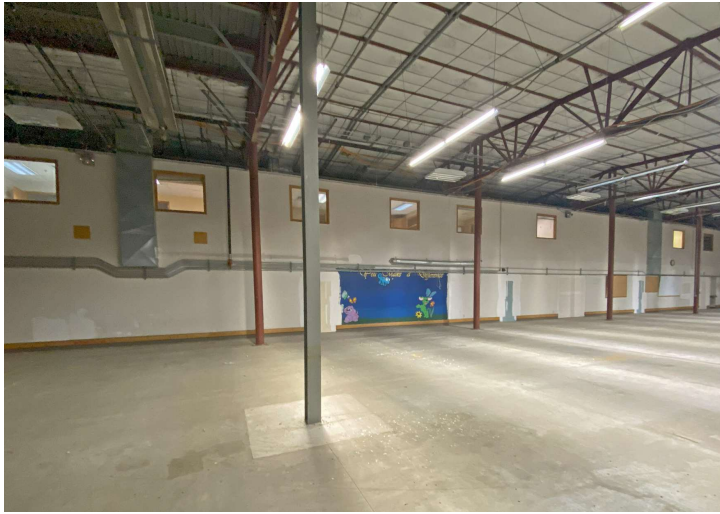
P.A. COMMERCIAL
Corporate & Investment Real Estate

Kevin Bull SENIOR ASSOCIATE
D: 248.358.5361 | C: 248.895.9972
kevin@pacommercial.com

We obtained the information above from sources we believe to be reliable. However, we have not verified its accuracy and make no guarantee, warranty or representation about it. It is submitted subject to the possibility of errors, omissions, change of price, rental or other conditions, prior sale, lease or financing, or withdrawal without notice. We include projections, opinions, assumptions or estimates for example only, and they may not represent current, past or future performance of the property. You and your tax and legal advisors should conduct your own investigation of the property and transaction.

2253 AIR PARK RD, RHINELANDER, WI 54501 // FOR SALE / LEASE

ADDITIONAL PHOTOS



P.A. COMMERCIAL
Corporate & Investment Real Estate

We obtained the information above from sources we believe to be reliable. However, we have not verified its accuracy and make no guarantee, warranty or representation about it. It is submitted subject to the possibility of errors, omissions, change of price, rental or other conditions, prior sale, lease or financing, or withdrawal without notice. We include projections, opinions, assumptions or estimates for example only, and they may not represent current, past or future performance of the property. You and your tax and legal advisors should conduct your own investigation of the property and transaction.

Kevin Bull SENIOR ASSOCIATE
D: 248.358.5361 | C: 248.895.9972
kevin@pacommercial.com

2253 AIR PARK RD, RHINELANDER, WI 54501 // FOR SALE / LEASE

ADDITIONAL PHOTOS

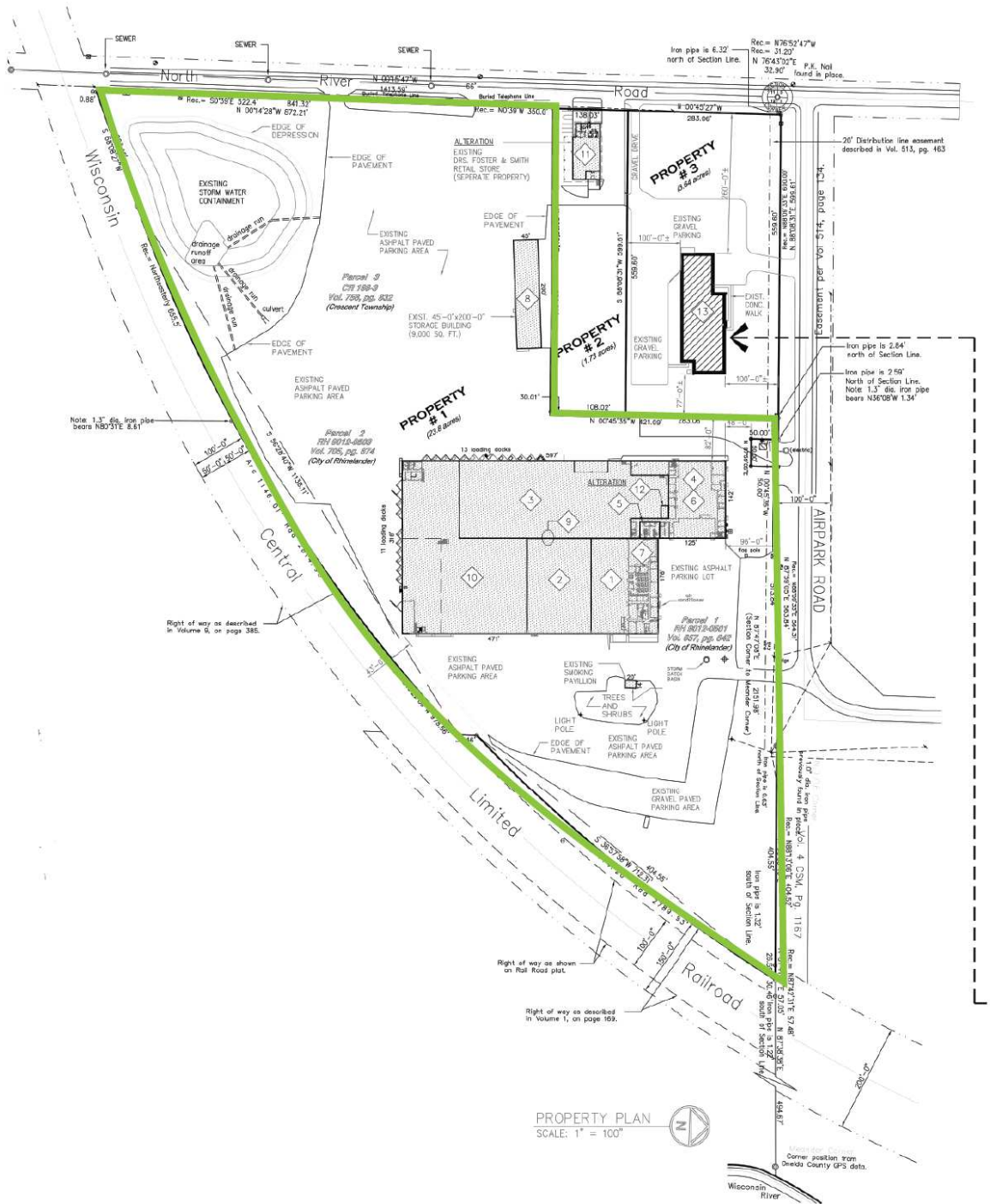


P.A. COMMERCIAL
Corporate & Investment Real Estate

Kevin Bull SENIOR ASSOCIATE
D: 248.358.5361 | C: 248.895.9972
kevin@pacommercial.com

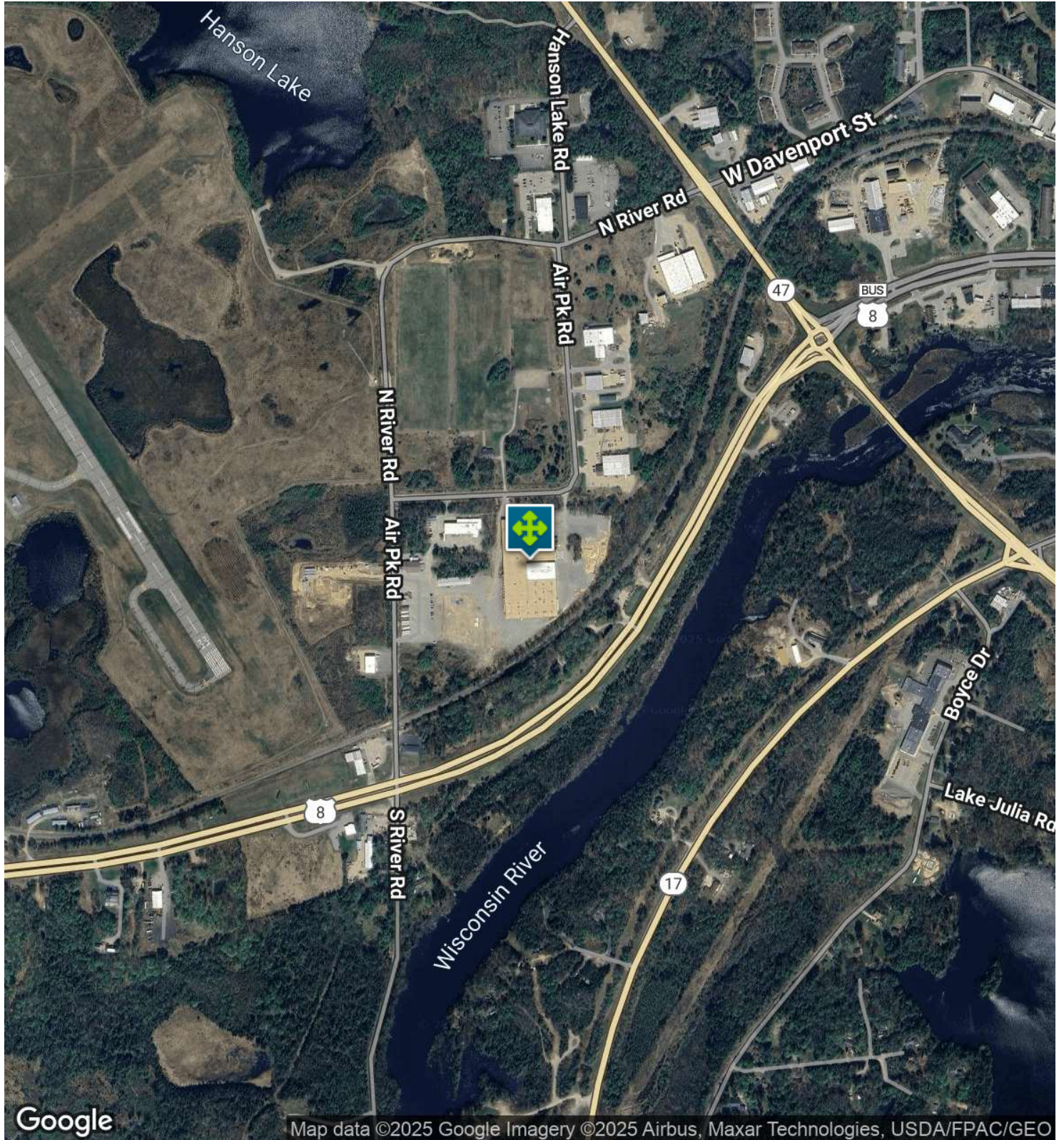
We obtained the information above from sources we believe to be reliable. However, we have not verified its accuracy and make no guarantee, warranty or representation about it. It is submitted subject to the possibility of errors, omissions, change of price, rental or other conditions, prior sale, lease or financing, or withdrawal without notice. We include projections, opinions, assumptions or estimates for example only, and they may not represent current, past or future performance of the property. You and your tax and legal advisors should conduct your own investigation of the property and transaction.

SITE PLANS



2253 AIR PARK RD, RHINELANDER, WI 54501 // FOR SALE / LEASE

AERIAL MAP

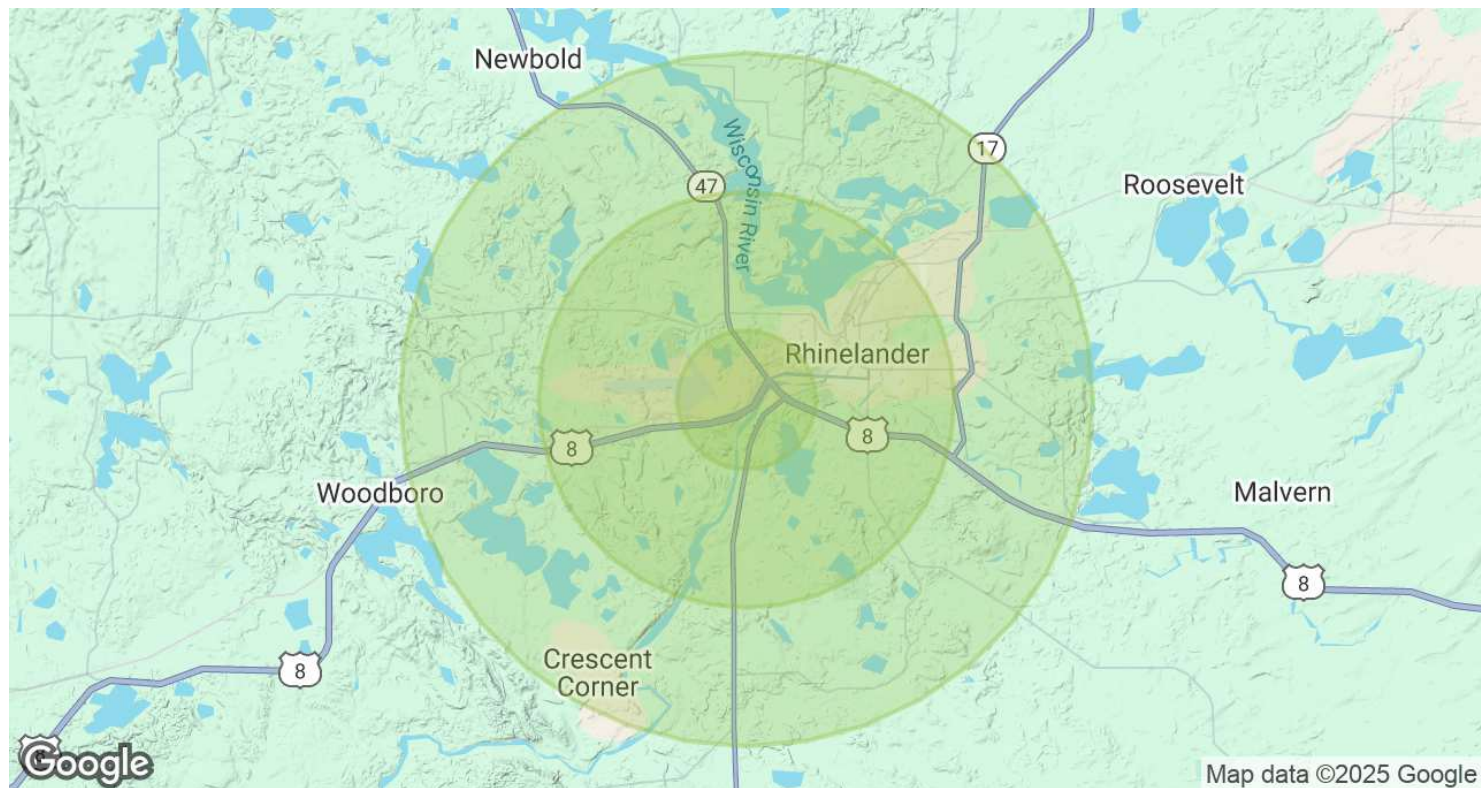


P.A. COMMERCIAL
Corporate & Investment Real Estate

Kevin Bull SENIOR ASSOCIATE
D: 248.358.5361 | C: 248.895.9972
kevin@pacommercial.com

We obtained the information above from sources we believe to be reliable. However, we have not verified its accuracy and make no guarantee, warranty or representation about it. It is submitted subject to the possibility of errors, omissions, change of price, rental or other conditions, prior sale, lease or financing, or withdrawal without notice. We include projections, opinions, assumptions or estimates for example only, and they may not represent current, past or future performance of the property. You and your tax and legal advisors should conduct your own investigation of the property and transaction.

DEMOGRAPHICS MAP & REPORT



POPULATION	1 MILE	3 MILES	5 MILES
Total Population	806	9,885	14,826
Average Age	45	43	45
Average Age (Male)	43	42	43
Average Age (Female)	47	45	46

HOUSEHOLDS & INCOME	1 MILE	3 MILES	5 MILES
Total Households	380	4,538	6,711
# of Persons per HH	2.1	2.2	2.2
Average HH Income	\$78,896	\$79,880	\$87,440
Average House Value	\$209,648	\$198,351	\$220,893

Demographics data derived from AlphaMap

2253 AIR PARK RD, RHINELANDER, WI 54501 // FOR SALE / LEASE

CONTACT US



FOR MORE INFORMATION, PLEASE CONTACT:



Kevin Bull

SENIOR ASSOCIATE

D: 248.358.5361

C: 248.895.9972

kevin@pacommercial.com

P.A. Commercial

26555 Evergreen Road, Suite 1500

Southfield, MI 48076

P: 248.358.0100

F: 248.358.5300

pacommercial.com

Follow Us!



P.A. COMMERCIAL
Corporate & Investment Real Estate

We obtained the information above from sources we believe to be reliable. However, we have not verified its accuracy and make no guarantee, warranty or representation about it. It is submitted subject to the possibility of errors, omissions, change of price, rental or other conditions, prior sale, lease or financing, or withdrawal without notice. We include projections, opinions, assumptions or estimates for example only, and they may not represent current, past or future performance of the property. You and your tax and legal advisors should conduct your own investigation of the property and transaction.