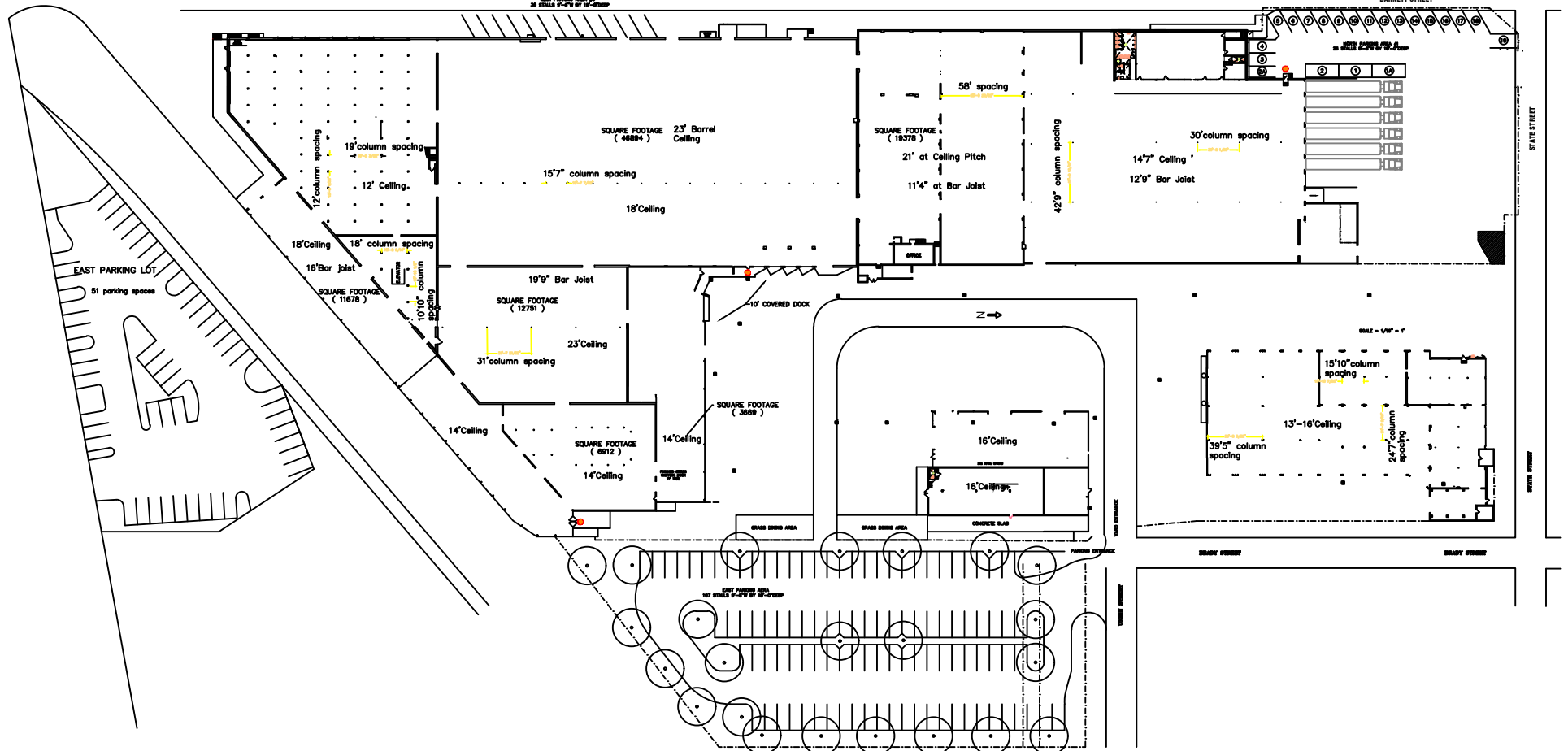
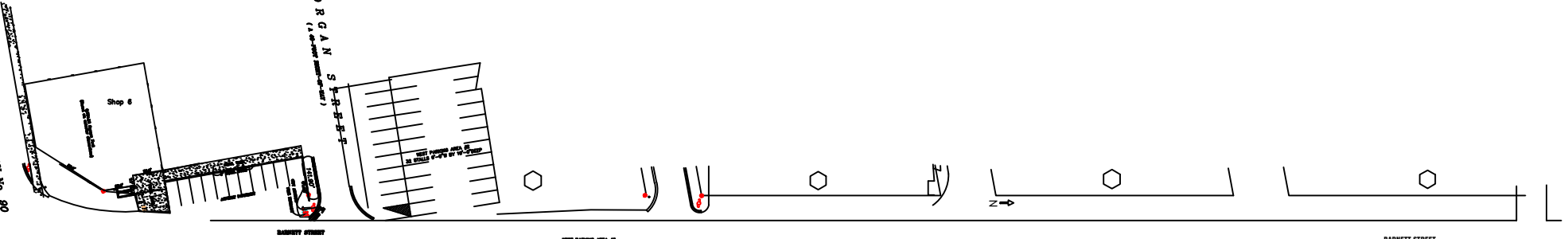


BEAVER STREET and/or U. S. HIGHWAY No. 90
(As shown on sheets 1 & 2)

MORGAN STREET
(As shown on sheet 1)



EAST PARKING LOT
51 parking spaces

WEST PARKING AREA
20 SPACES 7'-0" BY 10'-0" DEEP

BARNETT STREET

STATE STREET

EAST PARKING AREA
107 SPACES 7'-0" BY 10'-0" DEEP

SCALE = 1/4" = 1'