

5835 ALLEN ROAD
ALLEN PARK, MICHIGAN

RETAIL FOR LEASE
3, 320 Square Feet Available



**SIGNATURE
ASSOCIATES**
KNOW SIGNATURE | KNOW RESULTS



PROPERTY FEATURES

- 3,320 total building square footage
- 0.16 acre
- 14' ceiling height
- Zoned C-4
- 10 parking spaces plus street
- Lease Rate: \$12.00/sf NNN

Comments: Freestanding building on main road with solid demographics. Excellent visibility and access to major roads. Ideal for a number of potential uses.



For more information, please contact:

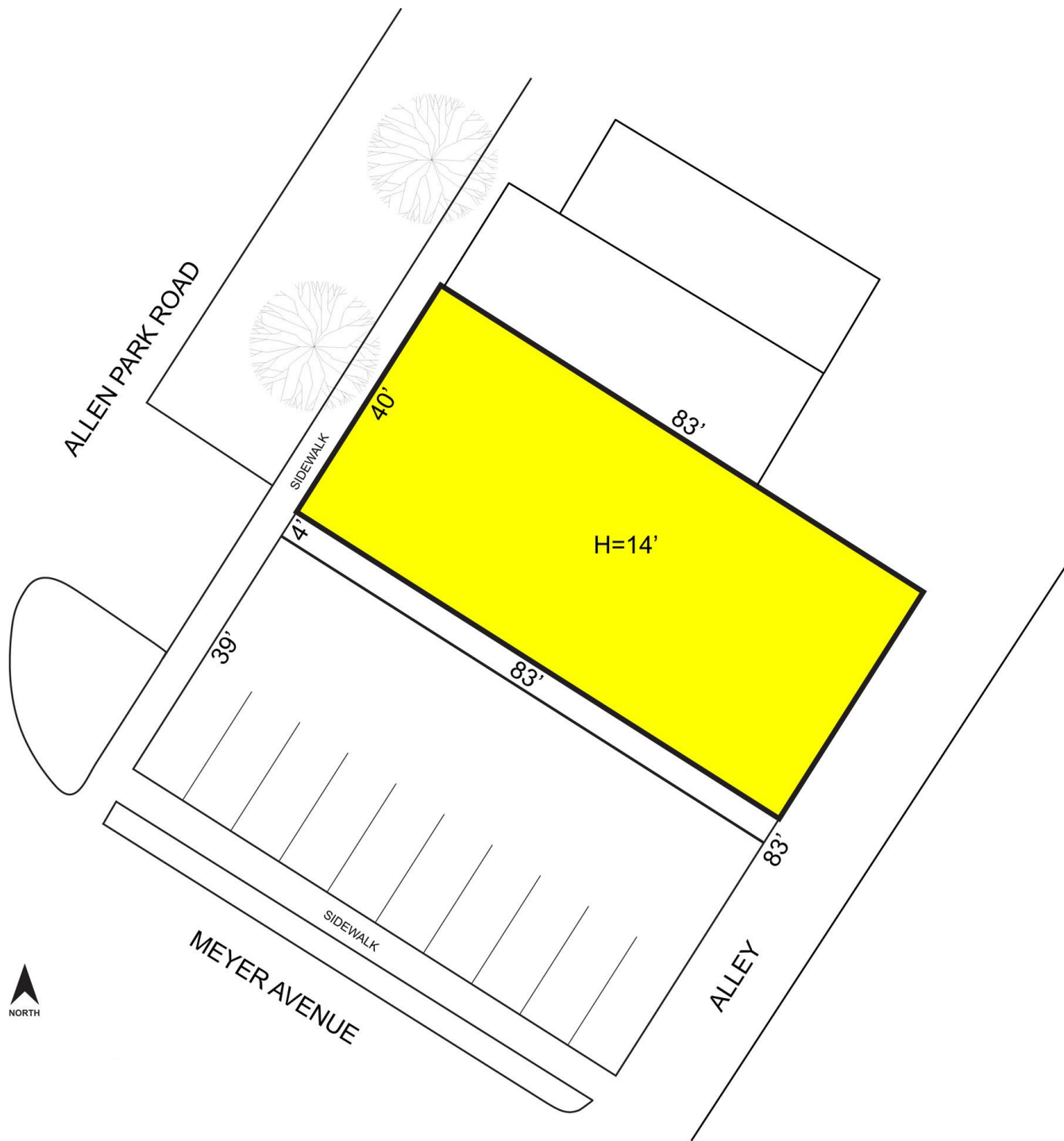
BRUCE D. BAJA
(248) 799 3177
bbaja@signatureassociates.com

SIGNATURE ASSOCIATES
One Towne Square, Suite 1200
Southfield, MI 48076
www.signatureassociates.com

5835 Allen Road – Allen Park, Michigan
Retail For Lease

3,320
Square Feet
AVAILABLE

Site Plan



For more information, please contact:
BRUCE D. BAJA
(248) 799 3177
bbaja@signatureassociates.com

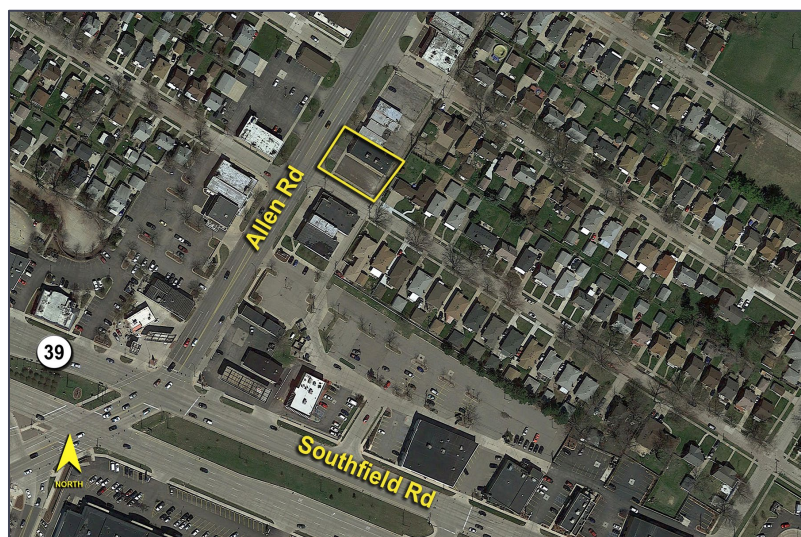
SIGNATURE ASSOCIATES
One Towne Square, Suite 1200
Southfield, MI 48076
www.signatureassociates.com

Information is subject to verification and no liability for errors or omissions is assumed. Price is subject to change and listing withdrawal.

5835 Allen Road – Allen Park, Michigan

Retail For Lease

3,320
Square Feet
AVAILABLE



DEMOGRAPHICS

	POPULATION	MED. HH INCOME
1 MILE	15,736	\$80,531
3 MILE	128,913	\$66,625
5 MILE	285,307	\$65,145

TRAFFIC COUNTS (TWO-WAY)

21,213	Allen Rd. N. of M-39
48,457	M-39 W. of Allen Rd.
49,582	Allen Rd. E. of M-39



For more information, please contact:

BRUCE D. BAJA
(248) 799 3177
bbaja@signatureassociates.com

SIGNATURE ASSOCIATES
One Towne Square, Suite 1200
Southfield, MI 48076
www.signatureassociates.com