

# FOR LEASE

## WAREHOUSE & COLD STORAGE OPTIONS

1301 Edison Highway  
Baltimore, MD



92,793 SF | 29,223 SF | 73,617 SF







# PROPERTY OVERVIEW

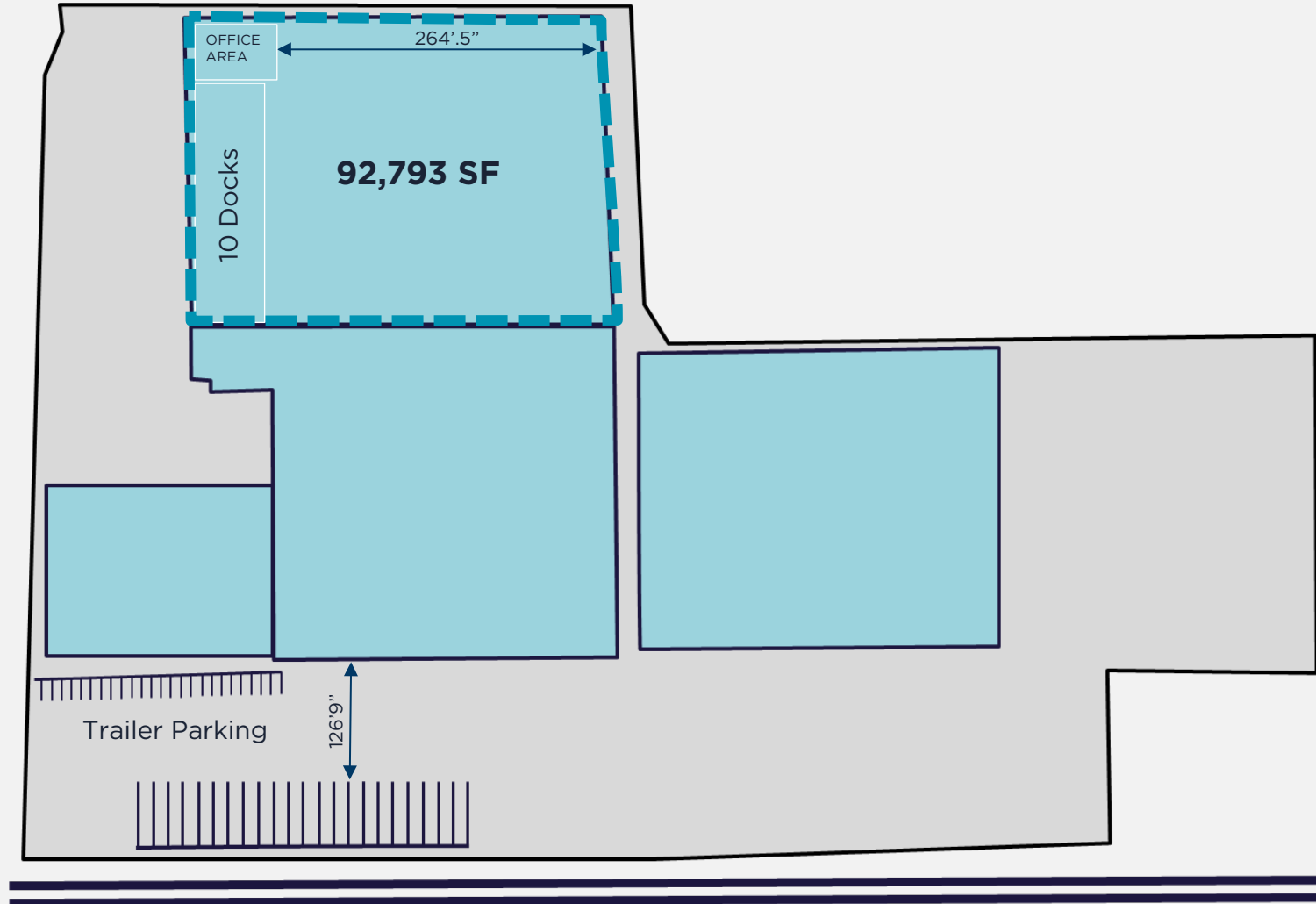




LEASING OPTION 1

# WAREHOUSE SPACE

## 92,793 SF



**OFFICE :**  
2,000 SF



**CLEAR  
HEIGHT:**  
20'



**LOADING:**  
10 docks



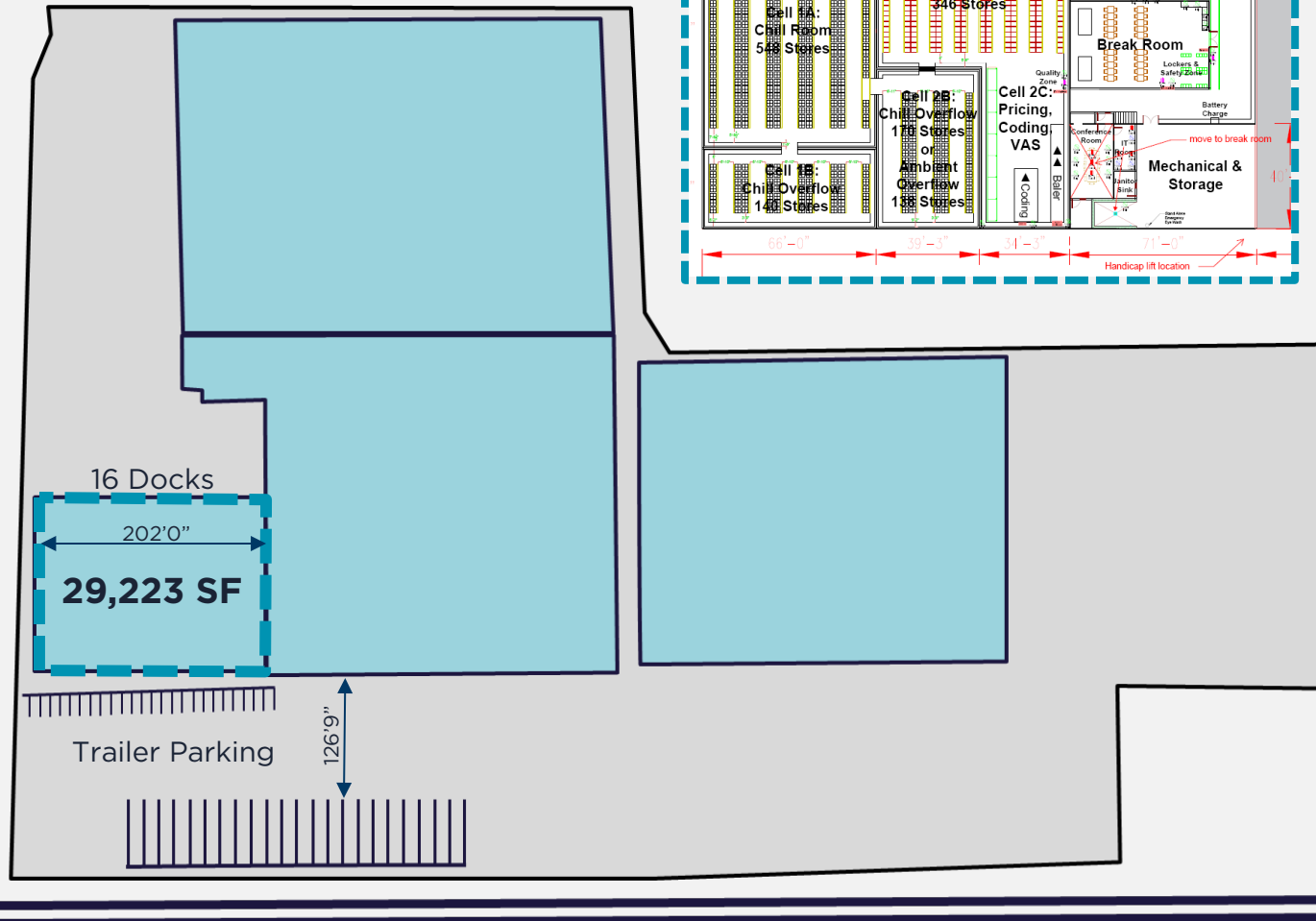
**POWER:**  
2,400 amp,  
480v, 3-phase



## LEASING OPTION 2

# COLD STORAGE

# 29,223 SF



**COOLER BOX:**  
26,000 SF



**CLEAR HEIGHT:**  
20'



**DOCKS:**  
Cold dock with 16 doors



**DRIVE-INS:**  
1



**OFFICE**  
3,000 SF



**TRAILER STALLS:**  
25-30  
(additional  
±1 acre  
available)

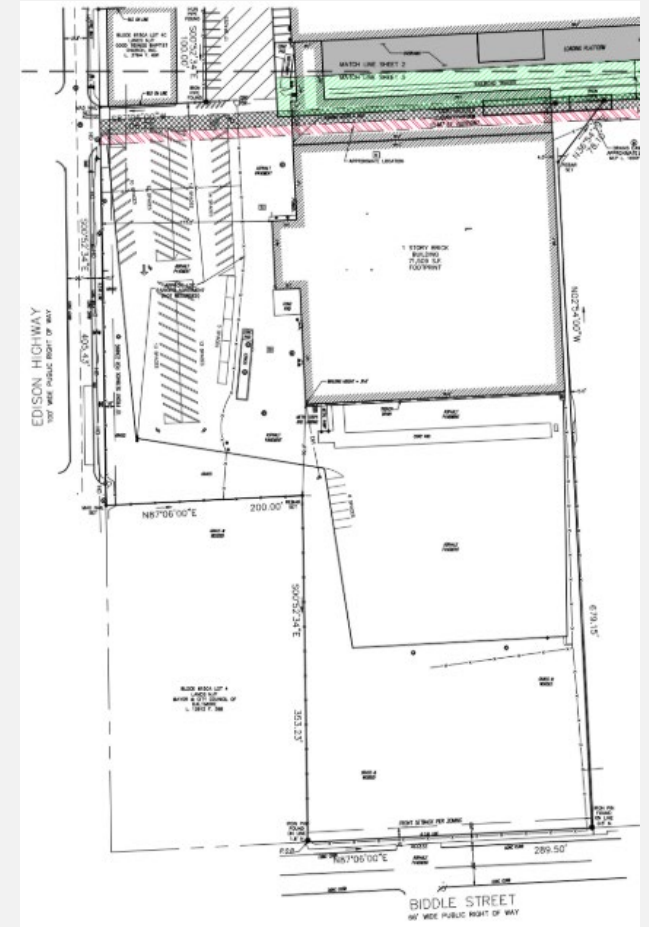
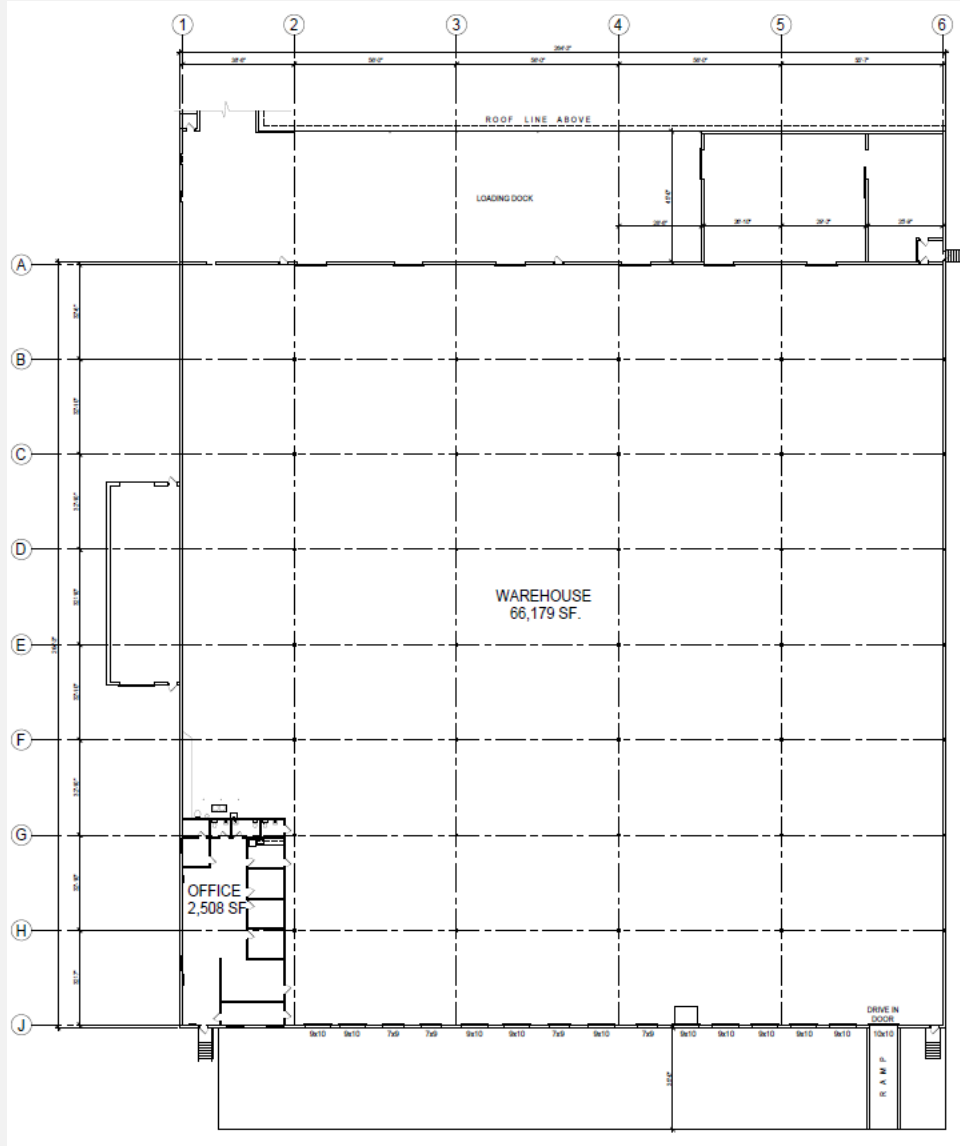




LEASING OPTION 3

# DRY STORAGE

**73,617 SF  
+ 1 ACRE**



**CLEAR  
HEIGHT:**  
24'



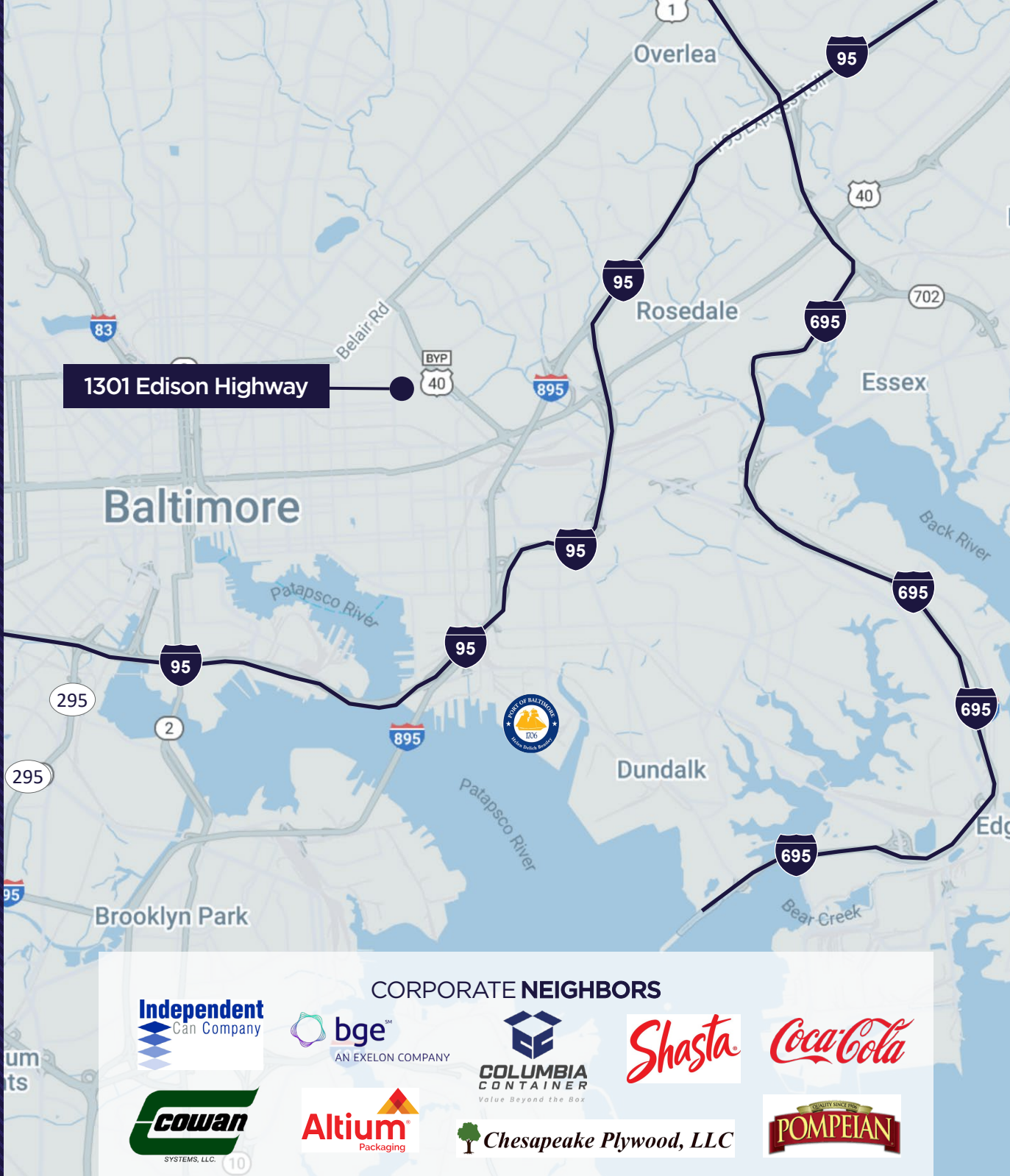
**OFFICE:**  
±2,000 SF



**DOCKS:**  
16



**DRIVE-INS:**  
1



1301 Edison Highway

Baltimore

Overlea

Rosedale

Essex

Dundalk

Brooklyn Park

Back River

Bear Creek

Edgemoor

CORPORATE NEIGHBORS



**3 MILES**

TO INTERSTATE 95

**4.5 MILES**

TO INTERSTATE 695

**5 MILES**

TO PORT OF BALTIMORE

**9.8 MILES**

TO INTERSTATE 295

**15 MILES**

TO BWI AIRPORT

**43 MILES**

TO WASHINGTON DC





# CONTACT INFORMATION



## DAVID DANNENFELSER

Executive Managing Director  
+1 410 382 4653  
[david.dannenfelser@cushwake.com](mailto:david.dannenfelser@cushwake.com)

## MCLANE FISHER

Vice Chair  
+1 410 685 9884  
[mclane.fisher@cushwake.com](mailto:mclane.fisher@cushwake.com)

## TYLER BOYKIN

Executive Managing Director  
+1 410 864 3560  
[tyler.boykin@cushwake.com](mailto:tyler.boykin@cushwake.com)

## JOHN BOOTE

Managing Director  
+1 410 347 7567  
[john.boote@cushwake.com](mailto:john.boote@cushwake.com)

## STEELE STANWICK

Director  
+1 410 685 9875  
[steele.stanwick@cushwake.com](mailto:steele.stanwick@cushwake.com)