

FOR LEASE

RETAIL
SHOP SPACE

4031 SEPULVEDA BLVD UNIT A
SANTA MONICA, CA 90405



RAFAEL PADILLA

310.395.2663 X101

RAFAEL@PARCOMMERCIAL.COM

LIC# 00960188

ARTUR PETER

310.395.2663 X101

ARTHUR@PARCOMMERCIAL.COM

LIC# 01068613



PROPERTY OVERVIEW

4031 SEPULVEDA BLVD UNIT A
SANTA MONICA, CA 90405

SUITE A

SIZE: Approximately 1,433 square feet

RENTAL RATE: \$3.10 per square foot per month, NNN
(NNN fee estimated to be \$0.70 per square foot per month)

PARKING: Dedicated rear lot

TERM: 3 - 5 years

AVAILABLE IMMEDIATELY



- » Prominent signage
- » Approximately 22,000 cars per day pass this site
- » Major North/South thoroughfare
- » Easily accessed from a variety of major boulevards
- » Convenient access to 405 freeway
- » Air conditioned

RAFAEL PADILLA

310.395.2663 X101

RAFAEL@PARCOMMERCIAL.COM

LIC# 00960188

ARTUR PETER

310.395.2663 X101

ARTHUR@PARCOMMERCIAL.COM

LIC# 01068613



All information furnished is from sources deemed reliable and which we believe to be correct, but no representation or guarantee is given as to its accuracy and is subject to errors and omissions. All measurements are approximate and have not been verified by Broker. You are advised to conduct an independent investigation to verify all information.

www.parcommercial.com

FLOOR PLAN

4031 SEPULVEDA BLVD UNIT A
SANTA MONICA, CA 90405



RAFAEL PADILLA

310.395.2663 X101

RAFAEL@PARCOMMERCIAL.COM

LIC# 00960188

ARTUR PETER

310.395.2663 X101

ARTHUR@PARCOMMERCIAL.COM

LIC# 01068613



All information furnished is from sources deemed reliable and which we believe to be correct, but no representation or guarantee is given as to its accuracy and is subject to errors and omissions. All measurements are approximate and have not been verified by Broker. You are advised to conduct an independent investigation to verify all information.

www.parcommercial.com

NEIGHBORHOOD OVERVIEW

4031 SEPULVEDA BLVD UNIT A
SANTA MONICA, CA 90405



JOHNNIE'S PASTRAMI



TITO'S TACOS



STARBUCKS



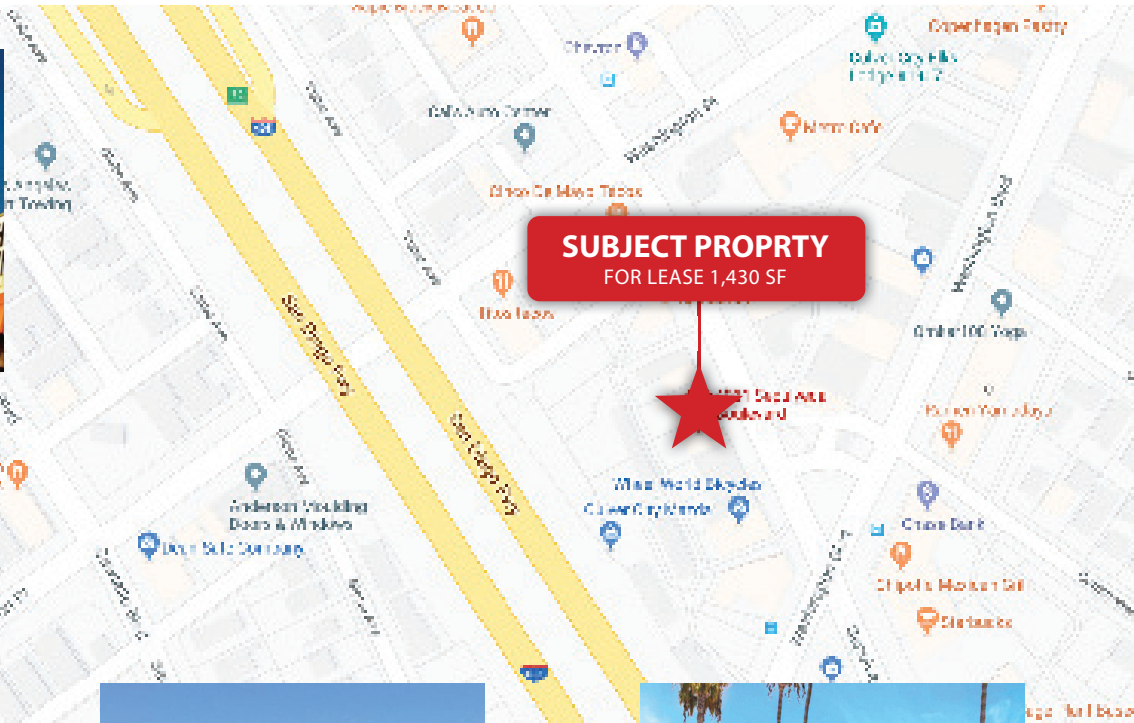
TRAVELODGE



F45



CHASE BANK



RAFAEL PADILLA

310.395.2663 X101

RAFAEL@PARCOMMERCIAL.COM

LIC# 00960188

ARTUR PETER

310.395.2663 X101

ARTHUR@PARCOMMERCIAL.COM

LIC# 01068613



All information furnished is from sources deemed reliable and which we believe to be correct, but no representation or guarantee is given as to its accuracy and is subject to errors and omissions. All measurements are approximate and have not been verified by Broker. You are advised to conduct an independent investigation to verify all information.

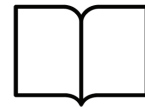
www.parcommercial.com

AREA DEMOGRAPHICS

4031 SEPULVEDA BLVD UNIT A
SANTA MONICA, CA 90405



Housing Units
21,777



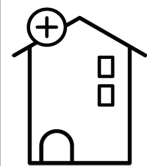
Educational Attainment
49%
with college or higher degree



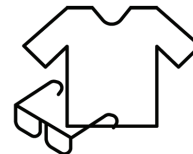
Estimated Population
45,215



Average Household Income
\$114,243



\$1,102,927



Apparel, Food/Entertainment & Services
\$301,822

1-MILE RADIUS

3-MILE RADIUS

5-MILE RADIUS

POPULATION

2029 Projected Population	44,071	255,016	743,564
2024 Estimated Population	45,215	261,138	759,213
2020 Census Population	45,479	260,115	745,220
Growth 2024-2029	-2.53%	-2.34%	-2.06%
Growth 2020-2024	-058%	-0.39%	1.88%

2024 HOUSEHOLD BY INCOME \$50,000 +

\$50,000-\$74,999	3,298	13,542	41,751
\$75,000-\$99,000	2,744	13,806	36,562
\$100,000 +	8,246	60,322	160,859
TOTAL	14,288	87,670	239,172

RAFAEL PADILLA

310.395.2663 X101

RAFAEL@PARCOMMERCIAL.COM

LIC# 00960188

ARTUR PETER

310.395.2663 X101

ARTHUR@PARCOMMERCIAL.COM

LIC# 01068613



All information furnished is from sources deemed reliable and which we believe to be correct, but no representation or guarantee is given as to its accuracy and is subject to errors and omissions. All measurements are approximate and have not been verified by Broker. You are advised to conduct an independent investigation to verify all information.

www.parcommercial.com