

Mill Creek Crossing

1935 Buford Mill Drive, Buford – GA 30519

\$28.00 SF GROSS Includes: Water, Sewer , Trash and CTI

FOR LEASE

- 1,600 SF *Former Nail Salon*



Property Highlights: *Anchored by Walmart, Lowes, Sonny's BBQ and Dollar Tree*

- **UNIT IS FULLY FURNISHED**
- Located just off I-985- Exit 4 - GA Highway 20
- Traffic Counts on GA Highway 20 – 58,050 VPD
- Retail Dense Shopping Center / Excellent Parking
- Great visibility from GA Highway 20 / Buford Drive
- Easily Accessible from Traffic light located on GA Highway 20
- Several Gas Stations, Banks and Car Dealers nearby.
- Nearby Mall of Georgia

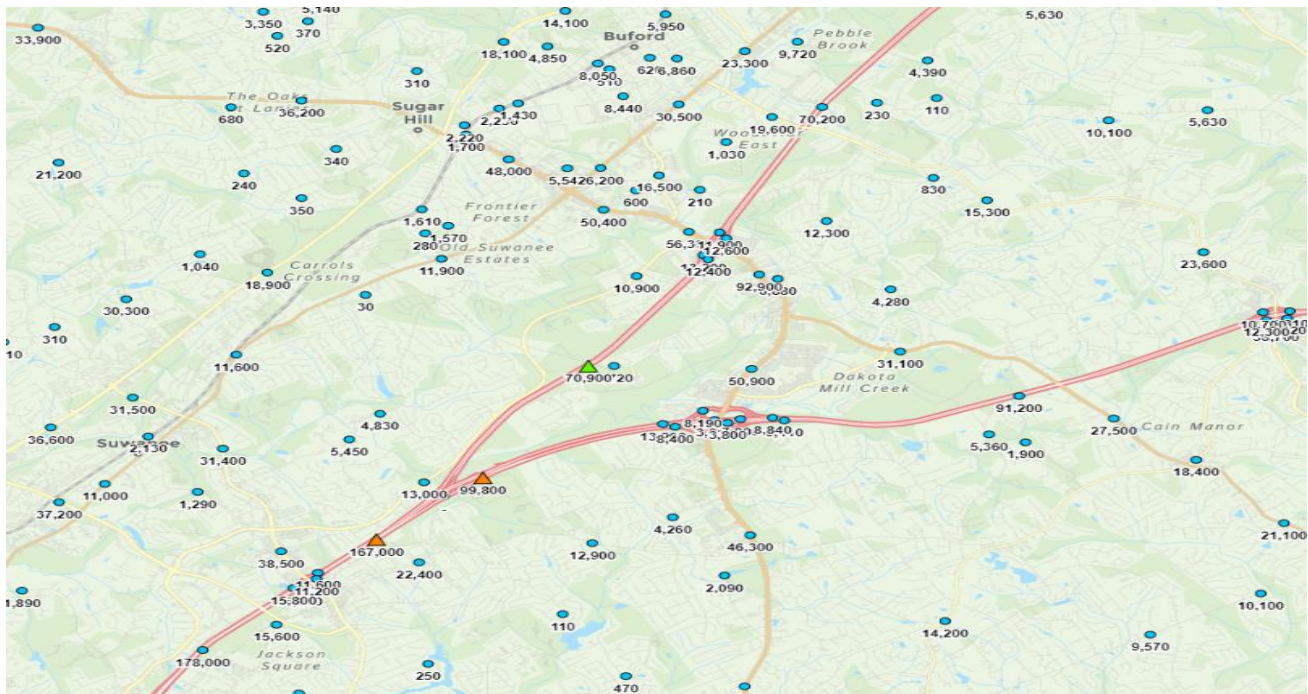
Schair and Associates, Inc.

5592 Cool Springs Road, Gainesville - GA 30506

770-533-9585 office / Rick Schair # 404-314-6793 cell

Mill Creek Crossing

1935 Buford Mill Drive, Buford – GA 30519



Schair and Associates, Inc.

5592 Cool Springs Road, Gainesville - GA 30506

