



Two Broadway Executive Park  
205 NW 63rd

# TWO BROADWAY EXECUTIVE PARK

205 NW 63<sup>RD</sup> ST, OKLAHOMA CITY, OK 73116

# MEET BROADWAY EXECUTIVE PARK

Two Broadway Executive Park is an upscale business park with handsome buildings, extensive landscaping and ample, lighted parking next to each building to provide a positive corporate image.

At Northwest 63rd Street and the Broadway Extension, Broadway Executive Park provides tenants prominent visibility and identity, convenient ingress and egress and excellent access to all destinations within the metropolitan area. Remodeled in 2024.

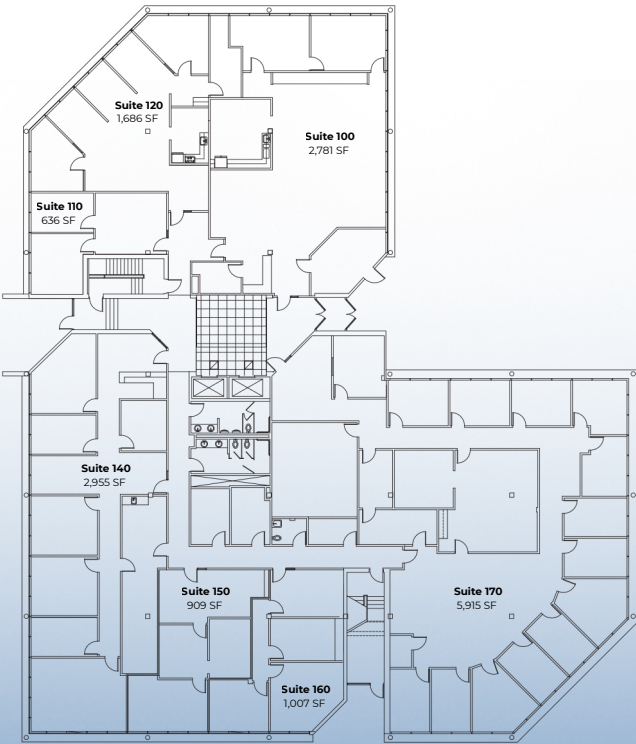
## PROPERTY INFORMATION

Year Built   Renovated	1980   2024
Floors	3
Total Square Feet	52,205 sf
Available Square Feet	4,678 sf
Rate	\$17.50 + Full Service
Class	B
Submarket	North
Parking	Abundant Surface

## HIGHLIGHTS

- Efficiency and flexibility are achieved in office space layout | Signage available
- On-site maintenance engineer
- Well-lit parking adjacent to each building
- Local Ownership | Local Management | Local team of Engineers
- Security: After-hours key-pad access | Roaming Security Guard



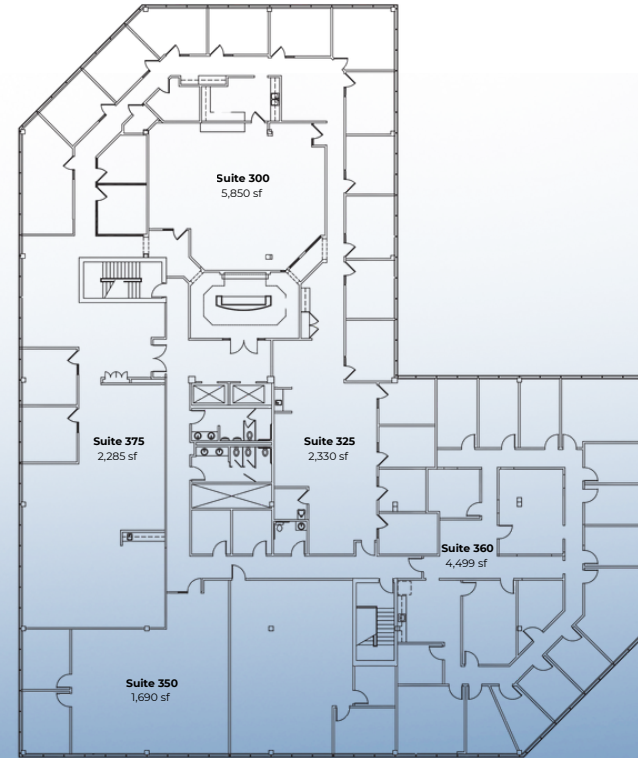


## FIRST FLOOR

- Suite 150 | 909 SF



## SECOND FLOOR



## THIRD FLOOR

- Suite 325 | 2,330 SF
- Suite 355 | 1,439 SF



N-WESTERN AVE

COLUMBUS SQUARE



BROADWAY EXECUTIVE PARK

Casey's Casey's

NW 63RD ST

NW 63RD ST

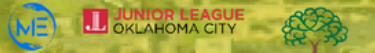
CLASSEN CURVE



[solidcore]



N-WESTERN AVE



MIDFIRST BANK

NW GRAND BLVD

E VAN NORMAN BLVD

PARAGON



BISHOP MCGUINNES HIGH SCHOOL



# BROADWAY EXECUTIVE

**WIGGIN**  
PROPERTIES, LLC

## CONTACT

---



**NICK BENTLEY**

VP of Brokerage  
nbentley@wigginprop.com  
405.408.5428



**IAN SIOUX**

Advisor  
iansioux@wigginprop.com  
405.659.6782