

**FOR
SALE**



INDUSTRIAL BUILDING WITH PARKING & YARD SPACE

87-95 Searing Avenue, Mineola



Justin Maiorano

Associate Vice President
+1 516 284 3448
justin.maiorano@colliers.com
Licensed Salesperson

Gus Nuzzolese, Esq.

Executive Vice President
+1 516 284 3456
gus.nuzzolese@colliers.com
Licensed Associate Broker

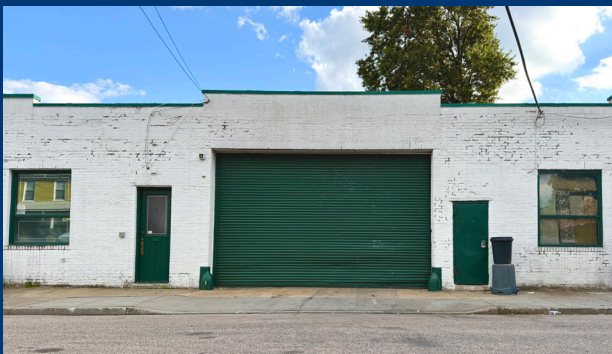
Steven Sessa

Senior Associate
+1 516 284 3414
steven.sessa@colliers.com
Licensed Salesperson

PROPERTY OVERVIEW

INDUSTRIAL BUILDING AVAILABLE FOR SALE

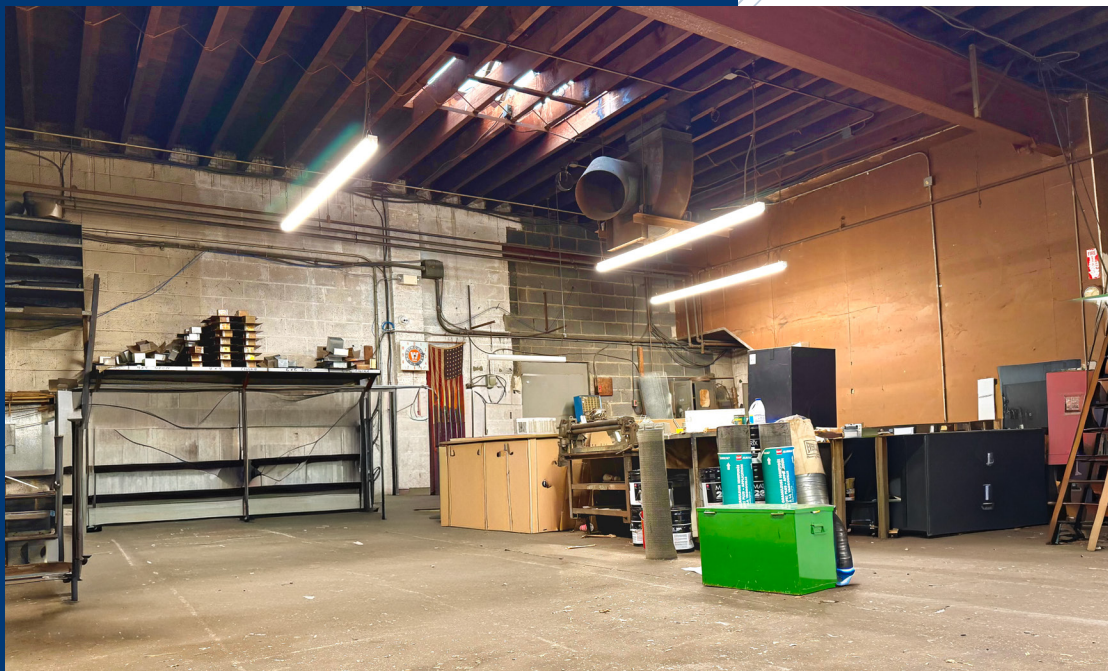
- » Excellent user/investor opportunity
- » Features office space on two floors with separate entrances
- » Multiple loading points with natural building divisions
- » Rare rear parking/yard space
- » Relatively low taxes for Nassau County
- » Walking distance to public transportation
- » +/- 0.50 miles to LIRR Mineola Station
- » Easily accessible by Long Island Expressway, Northern State Parkway, & Meadowbrook Parkway
- » Close proximity to Queens/Nassau County Border

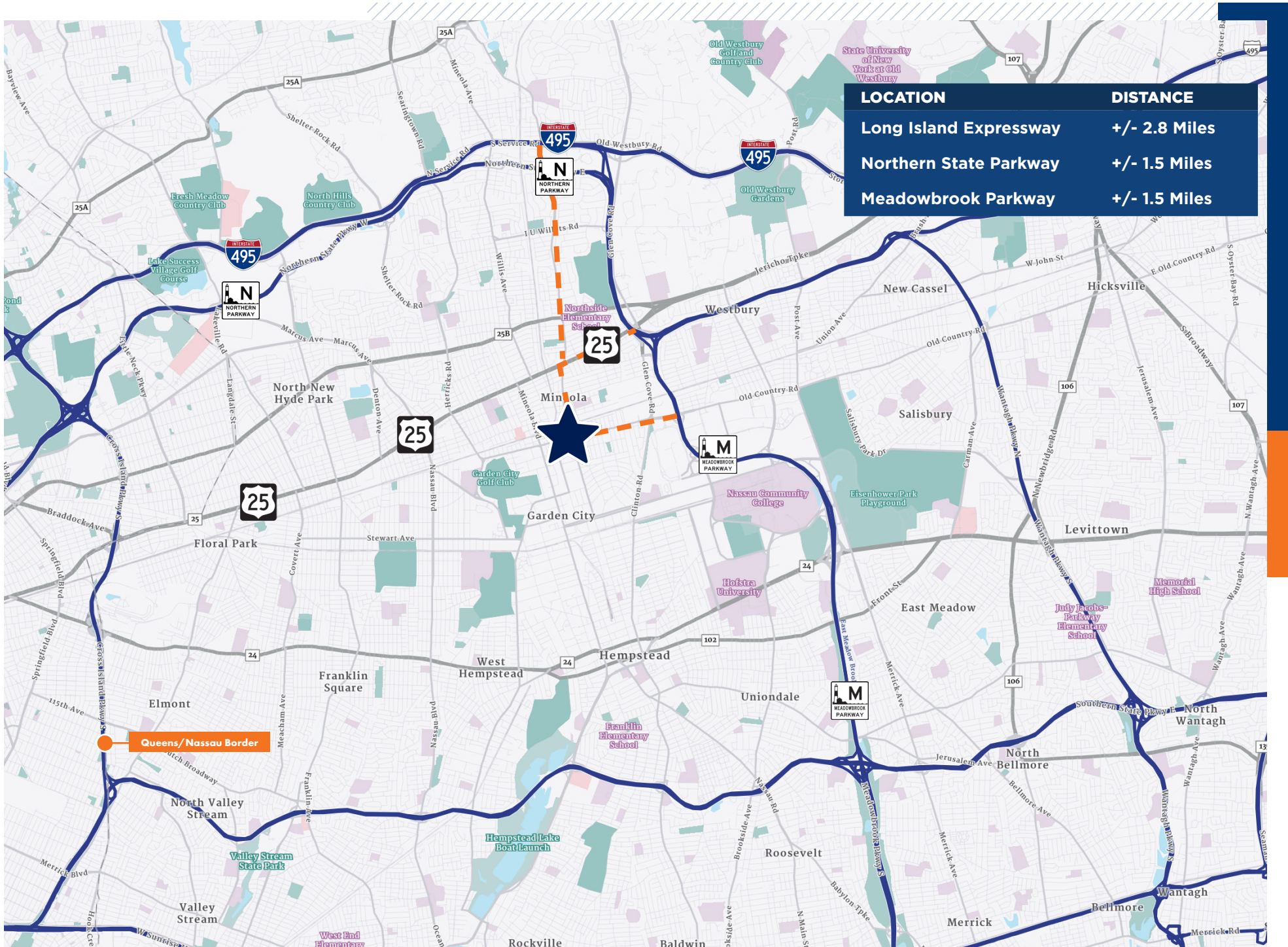


Total Size	+/- 17,000 SF
Plot Size	+/- 0.58 Acres
Rear Parking/Yard	+/- 7,500 SF
Loading	8 Drive-in Doors & 1 Loading Platform
Ceiling Height	12', 13'6", & 16'3"
Heat	Gas
Zoning	M (Manufacturing) & R-3 (Two Family Residential)
Municipality	Village of Mineola, Town of North Hempstead
RE Taxes (2024/2025)	General: \$8,410.85 School: \$32,748.94 Village: \$7,495.91 Total: \$48,655.70 (\$2.86 PSF)
Asking Sale Price	\$4,600,000 (\$270.59 PSF)











For more information, contact:

Justin Maiorano

Associate Vice President
+1 516 284 3448
justin.maiorano@colliers.com
Licensed Salesperson

Gus Nuzzolese, Esq.

Executive Vice President
+1 516 284 3456
gus.nuzzolese@colliers.com
Licensed Associate Broker

Steven Sessa

Senior Associate
+1 516 284 3414
steven.sessa@colliers.com
Licensed Salesperson

No representation is made as to the accuracy of the information furnished herein and same is submitted subject to errors, omissions, change of prices, rental, or other conditions, prior sale, lease, sublease, and/or withdrawal without notice. While every attempt is made to ensure accuracy, the floor plan(s) is for guidance only. The measurements, dimensions, specifications, and other data shown are approximate and may not be to scale. We assume no responsibility for the accuracy of the floor plan(s) or for any action taken in reliance thereon. The floor plan(s) do not create any representation, warranty or contract. All parties should consult a professional, such as an architect, to verify the information contained herein. The furnishing of this information shall not be deemed a hiring. A commission in accordance with our principal's schedule of rates and conditions will be paid to the procuring Broker who executes our or our principal's brokerage agreement, subject to a fully consummated transaction upon terms and conditions acceptable to our principal. Colliers International LI, Inc.