



## RETAIL/OFFICE PROPERTY FOR LEASE IN SHARPSBURG

1003 MAIN ST  
PITTSBURGH, PA 15215



**Presented By:**

**Kevin Riley**

412.745.5000 x200

[kevin@totumrealtyadvisors.com](mailto:kevin@totumrealtyadvisors.com)

420 Fort Duquesne Blvd Pittsburgh, PA 15222 // 412.745.5000 // [totumrealtyadvisors.com](http://totumrealtyadvisors.com)



# 1003 MAIN ST

PITTSBURGH, PA 15215



## EXECUTIVE SUMMARY



## OFFERING SUMMARY

Lease Rate:	\$15.00 SF/yr (NNN)
Building Size:	6,400 SF
Available SF:	2,200 - 4,200 SF
First Floor SF:	4,200
Second Floor SF:	2,200
Lot Size:	.11 Acres or 4,862 SF
Number of Units:	2
Year Built:	1900
Zoning:	Industrial

## PROPERTY OVERVIEW

Introducing a prime leasing opportunity in Sharpsburg. This versatile property offers the ideal setting for retail or office space. It features a prominent storefront directly located on Main Street, a vibrant corridor including diverse array of local retailers such as Redhawk Coffee Roasters, Dancing Gnome Beer and The Brinery. Benefit from the convenient accessibility to Route 28, simplifying commutes for employees, clients, and customers alike. Whether you envision a dynamic retail establishment or a modern office space, this property provides a versatile canvas to bring your vision to life. Embrace the opportunity to establish your presence in this thriving area, where the possibilities are limitless for your business's success.

## PROPERTY HIGHLIGHTS

- Storefront directly located on Main Street
- Directly across from Chief Guyasuta Statue
- Easily access to Route 28

## Presented By:

**Kevin Riley**

412.745.5000 x200

kevin@totumrealtyadvisors.com

420 Fort Duquesne Blvd Pittsburgh, PA 15222 // 412.745.5000 // totumrealtyadvisors.com



# 1003 MAIN ST

PITTSBURGH, PA 15215



## ADDITIONAL PHOTOS



Presented By:

**Kevin Riley**

412.745.5000 x200

kevin@totumrealtyadvisors.com

420 Fort Duquesne Blvd Pittsburgh, PA 15222 // 412.745.5000 // totumrealtyadvisors.com

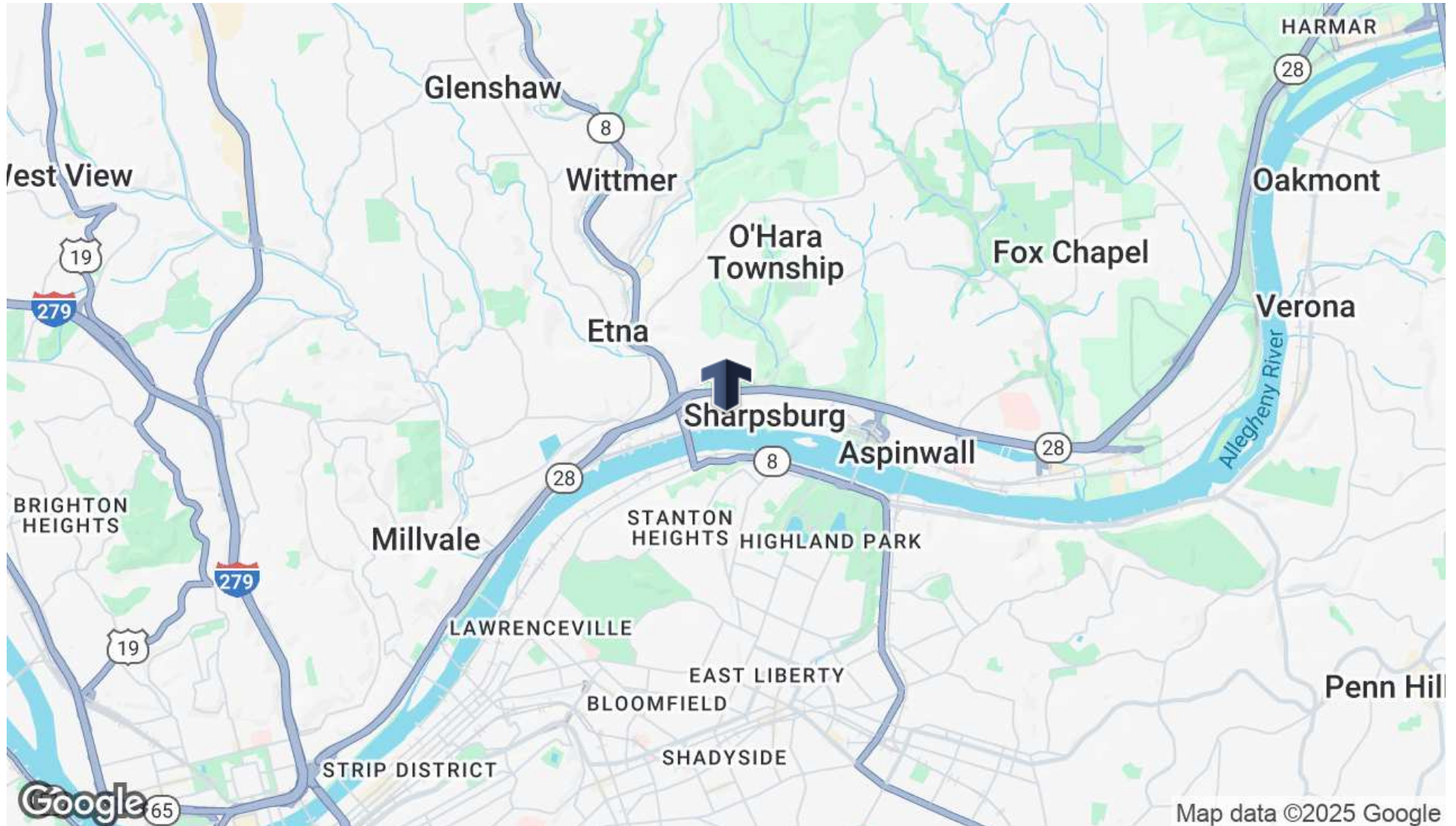


# 1003 MAIN ST

PITTSBURGH, PA 15215



## LOCATION MAP



Presented By:

**Kevin Riley**

412.745.5000 x200

kevin@totumrealtyadvisors.com

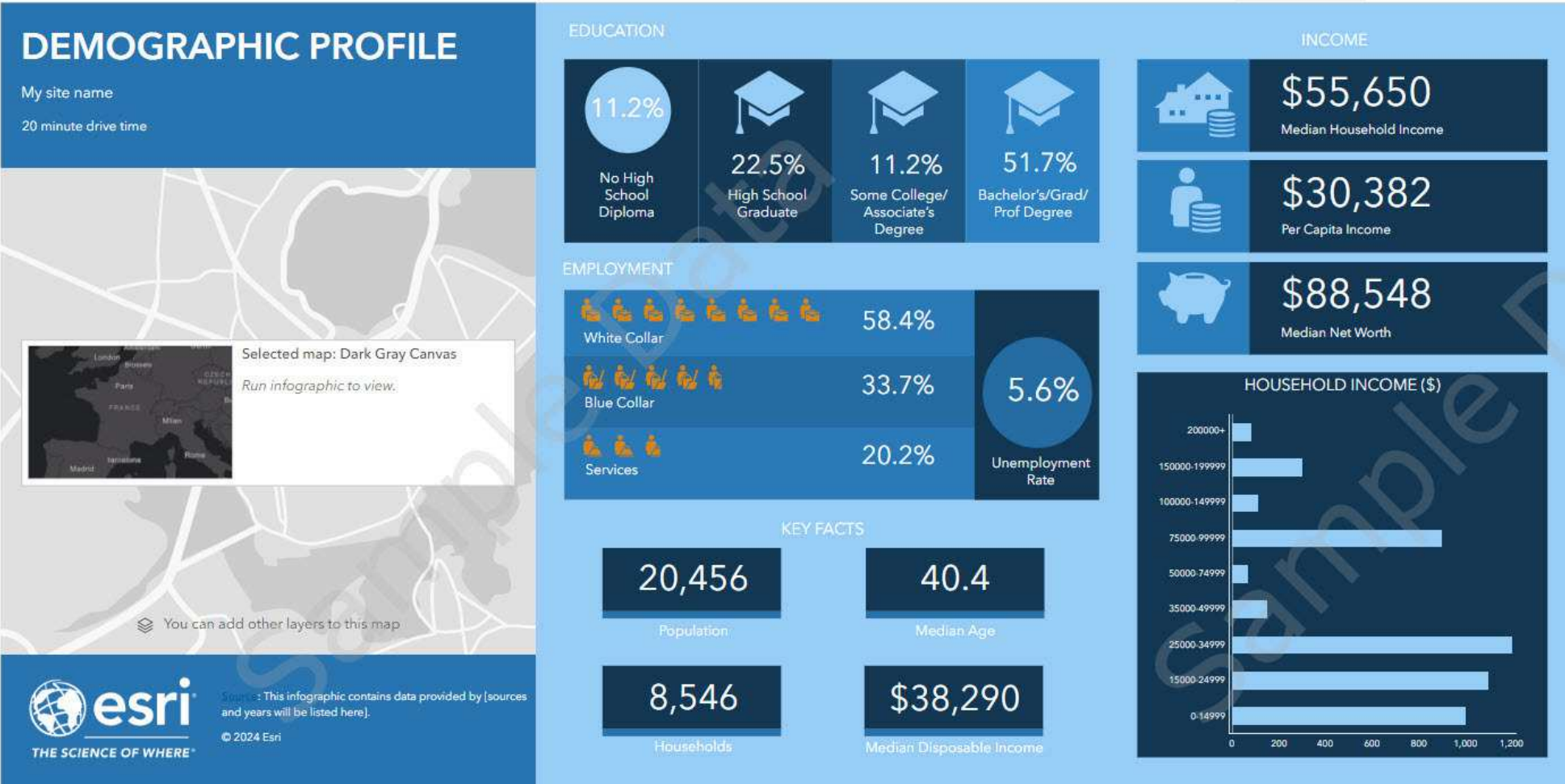
420 Fort Duquesne Blvd Pittsburgh, PA 15222 // 412.745.5000 // totumrealtyadvisors.com

# 1003 MAIN ST

PITTSBURGH, PA 15215



## DEMOGRAPHICS



Presented By:

Kevin Riley

412.745.5000 x200

kevin@totumrealtyadvisors.com

420 Fort Duquesne Blvd Pittsburgh, PA 15222 // 412.745.5000 // totumrealtyadvisors.com