

FOR LEASE



MELVIN MARK

EST. 1945



115 SE YAMHILL

115 SE Yamhill Street, Portland, Oregon 97214

*Industrial Building for Lease
at 9,244 SF*

Call For Pricing

NNN Lease

DON DRAKE

503.546.4527

ddrake@melvinmark.com

Licensed in OR

TIM PARKER

503.546.4537

tparker@melvinmark.com

Licensed in OR & WA

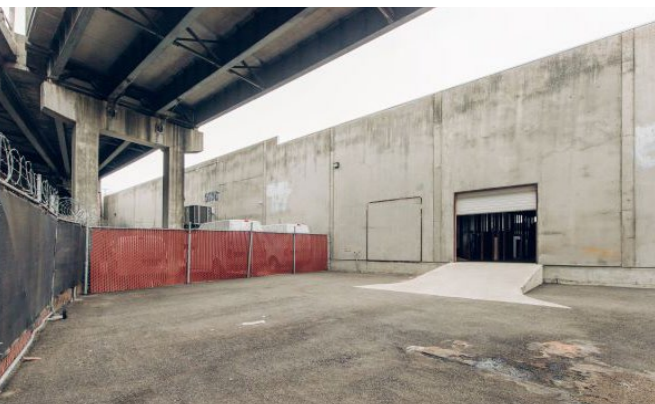
Melvin Mark Brokerage Co.

111 Southwest Columbia

Portland, Oregon 97201

P: 503.223.9203 | melvinmark.com

115 SE YAMHILL FOR LEASE



BUILDING HIGHLIGHTS

- Portland-based property owner/manager
- Prime SE Portland Location
- Availability 9,244 SF of shell warehouse
- TI Negotiable
- Small fenced yard located at the back entrance of the vacancy
- Parking and loading in yard area north of and contiguous to the vacancy plus on street
- Recently renovated with a new roof, new exterior paint and new awnings
- New parking lot seal coat and stripe
- New 600 amp 277/480 volt electrical service



CREATIVE
WORKSPACE
AVAILABLE



PARKING
AVAILABLE



BIKE
ACCESSIBILITY



COFFEE
SHOP(S)
NEARBY



DINING
NEARBY

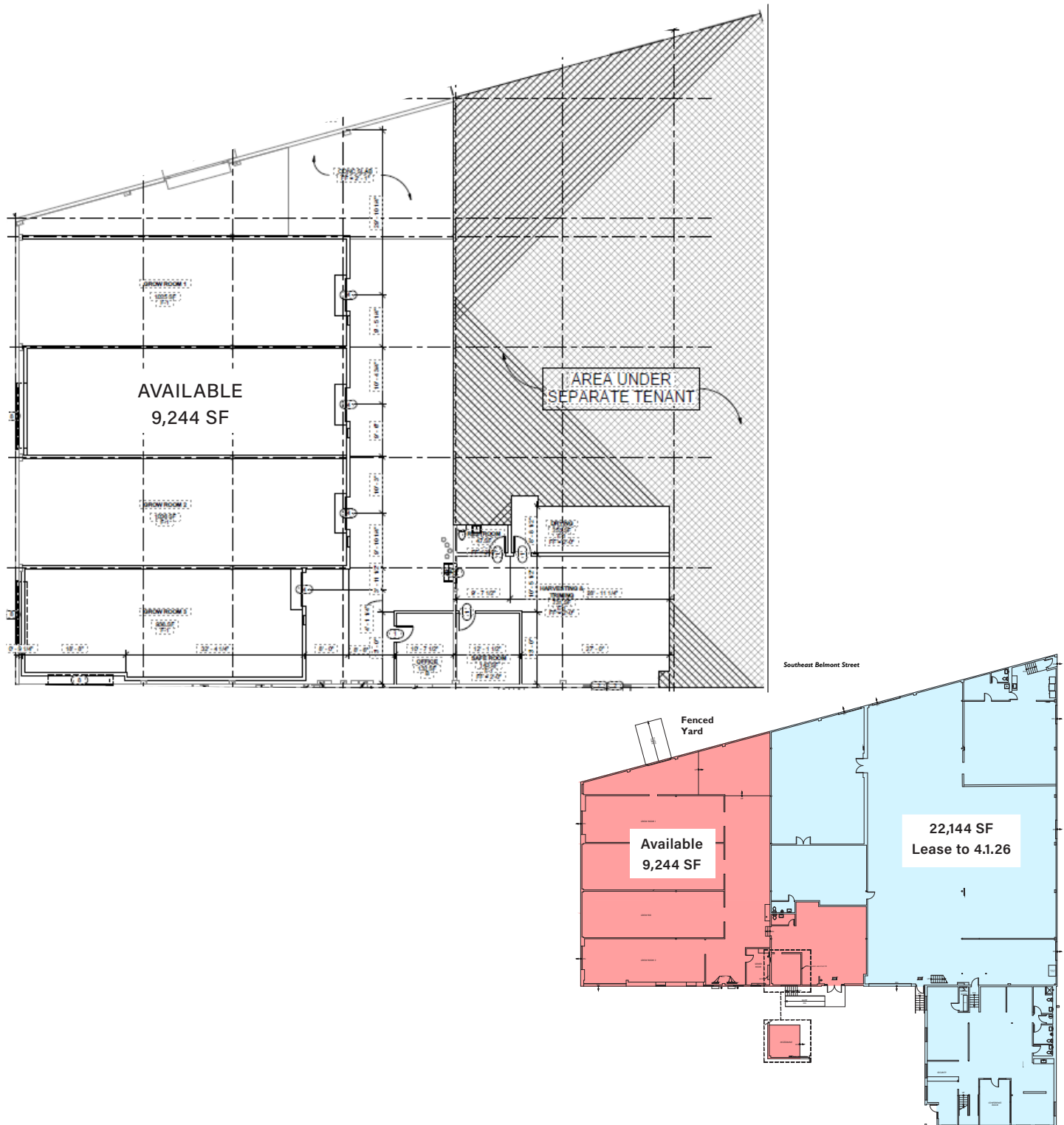


MANAGED BY
MELVIN MARK



115 SE YAMHILL FLOORPLAN

115 SE Yamhill Street
Portland, OR 97214



INDUSTRIAL SPACE 9,244 SF (approx.)

Available for Lease

Call for Pricing

NNN Lease

DON DRAKE
503.546.4527
ddrake@melvinmark.com
Licensed in OR

TIM PARKER
503.546.4537
tparker@melvinmark.com
Licensed in OR & WA



115 SE YAMHILL LOCATION



LOCATION HIGHLIGHTS

- Located within a lively dining and retail district
- Close Proximity to I-5 and Hwy 84
- Prime Southeast location, central and convenient to downtown Portland
- Near TriMet bus route and bike routes
- Steps away from Water Ave Coffee, Clark Lewis, Boke Bowl and Cargo



81

WALK SCORE

"Very Walkable"



100

BIKE SCORE

"Biker's Paradise"



83

TRANSIT SCORE

"Excellent Transit"



NEARBY AMENITIES

- Water Ave Coffee
- Boke Bowl
- Shalom Y'all
- Smith Tea
- Clark Lewis
- Cargo
- Urbanite
- River City Bicycles
- Afuri Izakaya SE
- Olympia Provisions
- Next Adventure





MELVIN MARK

EST. 1945

FOR LEASE **115 SE YAMHILL**

115 SE Yamhill Street | Portland, OR 97214

DON DRAKE

O. 503.546.4527

C. 503.789.8688

[ddrake@melvinmark.com](mailto:d Drake@melvinmark.com)

Licensed in OR

TIM PARKER

O. 503.546.4537

C. 503.803.6068

tparker@melvinmark.com

Licensed in OR & WA

The information contained herein has been obtained from sources we deem reliable.

We do not, however guarantee its accuracy. All information should be independently verified prior to purchase or lease.