

Superstition Springs Former Medical Spaces

SWC Power Road & Baseline Road
Mesa, AZ



Get more information

Matt Milinovich

D 480 423 7959
C 602 885 9393
matt.milinovich@avisonyoung.com

James DeCremer

D 480 423 7958
C 602 909 0957
james.decremer@avisonyoung.com

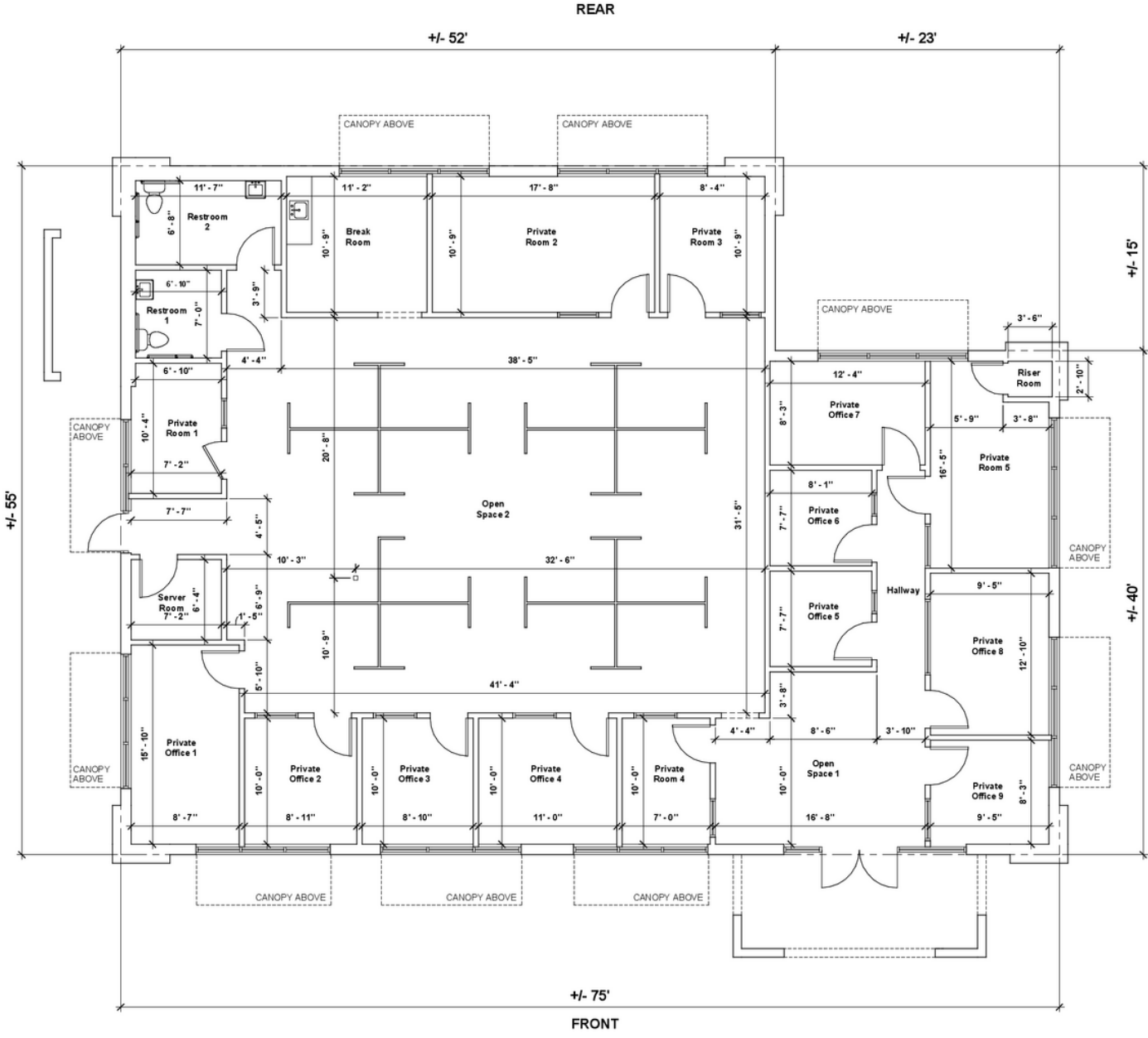
Kyle Farrell

D 480 994 8155
C 480 815 3755
kyle.farrell@avisonyoung.com

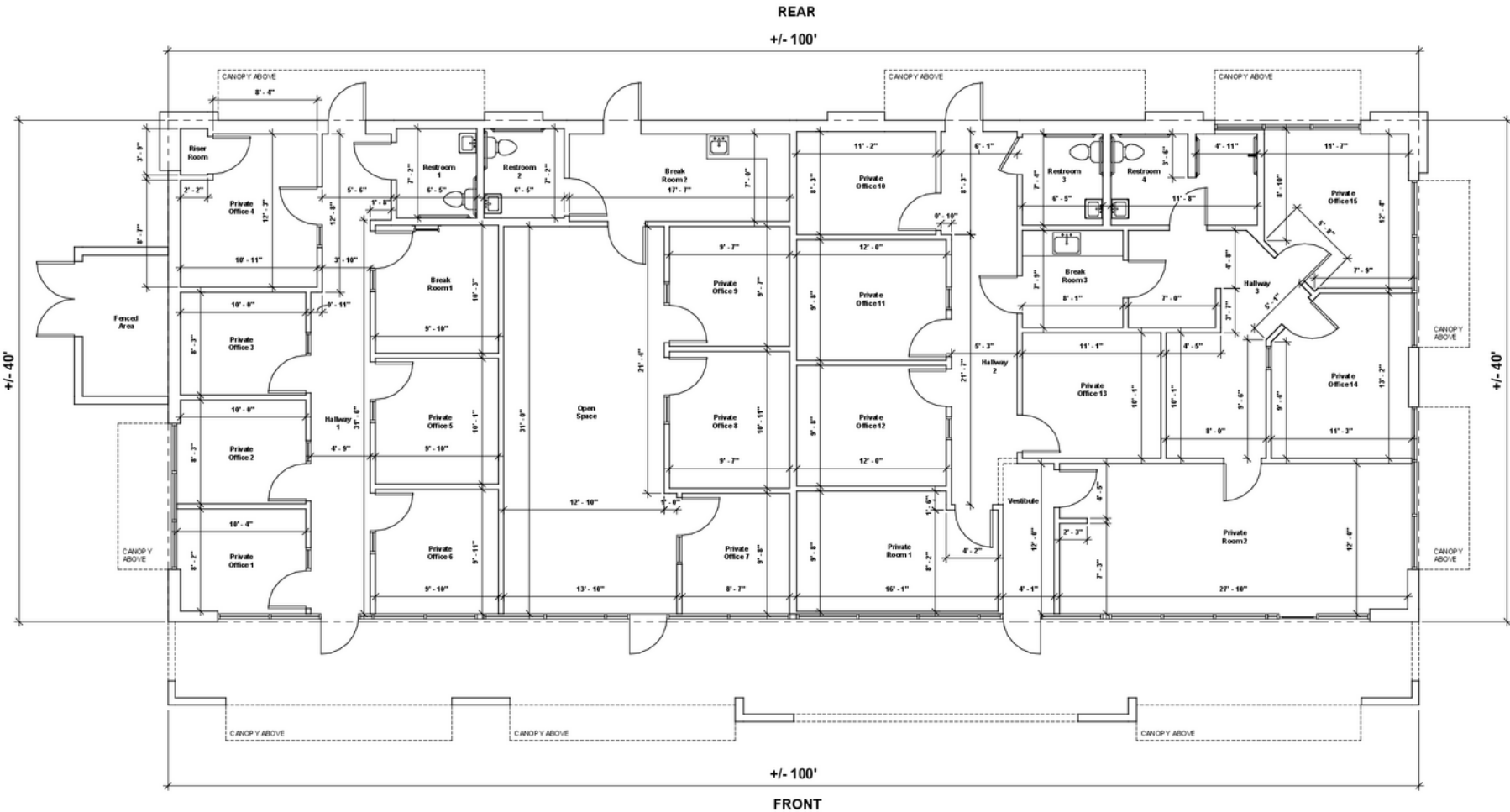
2720 E Camelback Road | Suite 210 | Phoenix, AZ 85016 | www.avisonyoung.com



Floor plan | 2140: 3,746 sf



Floor plan | 2150: 4,000 sf





Two medical spaces coming available
 SWC Power Road & Baseline Road

Property overview

Superstition Springs is a neighborhood center serving the local Gilbert/Mesa trade areas. With proximity to US-60 Freeway this neighborhood shopping center is located in a high-population/ high-traffic area with frontage on Power Road (over 67,000 vpd).



Large parking field with multiple points of access



Monument signage available



Immediate trade area is a major retail / traffic hub



Over 308,000 population within a 5-mile radius



Notable tenants



Site plan

Two medical spaces coming available
SWC Power Road & Baseline Road

#	Tenant	Size
A101	Available - Former cellular	1,400 sf
A103	Liberty Tax	1,239 sf
A105	Power Smoke Shop	1,233 sf
A107-113	Phenix Salon Suites	6,350 sf
A115	Crafted Image Barber	1,154 sf
A117	Happy Kitchen	1,366 sf
A119	Gathering Humanity	1,434 sf
A121	Available - Former Pizza Hut	1,646 sf
A123	Imperial Massage	1,400 sf
A125	Kumon	1,493 sf
Major 1	Petco	15,000 sf
Major 2	Savers	24,914 sf
Pad 1	Sherwin Williams	5,407 sf
Pad 2.1-2.4	Rhythmic Dance Complex	3,472 sf
Pad 3.1	Bagels & Bialys	1,200 sf
Pad 3.2	Tum Nak Thai	1,200 sf
SP3104	Available - Former J&S Hobbies	2,872 sf
SP3107	Available	2,000 sf
Pad 3.9B	Melty Sandwiches	1,487 sf
Pad 3.9A	Wingstop	2,000 sf
Pad 4-4.2	Salon Centric	2,500 sf
Pad 4.4	Barro's Pizza	3,500 sf
SP7100	Former Pima Medical Coming Available - End of 2027 [do not disturb]	4,000 sf
SP9000	Former Pima Medical Coming Available - End of 2027 [do not disturb]	3,750 sf





Trade area


Two medical spaces coming available
SWC Power Road & Baseline Road





Demographics

	1-mile	3-miles	5-miles
Population	12,103	113,924	308,288


	1-mile	3-miles	5-miles
Median age	35.7	44.0	42.0

	1-mile	3-miles	5-miles
Daytime employment	6,836	27,930	63,729

	1-mile	3-miles	5-miles
Avg. HH income	\$115,898	\$115,251	\$115,476

	1-mile	3-miles	5-miles
HH units	4,813	53,030	139,575

Traffic counts

	Power Road	±67,937 vpd
	Baseline Road	±33,525 vpd

