

18139 Logistics Parkway, NE
Covington, GA 30014

161,238 SF AVAILABLE

Rear Load Design

36' Clear Height

52' x 56' Column Spacing
with 60' Speed Bay

195' Truck Court
with 60' Concrete Apron

(57) 9' x 10' Dock-High Doors

(2) 13' x 14' Drive-In Doors

LED lighting with Motion Sensors

TPO Roof

ESFR Fire Protection

Located in a TIER 2 COUNTY,
which provides a \$3000 tax credit
for each new job created for up to
5 years

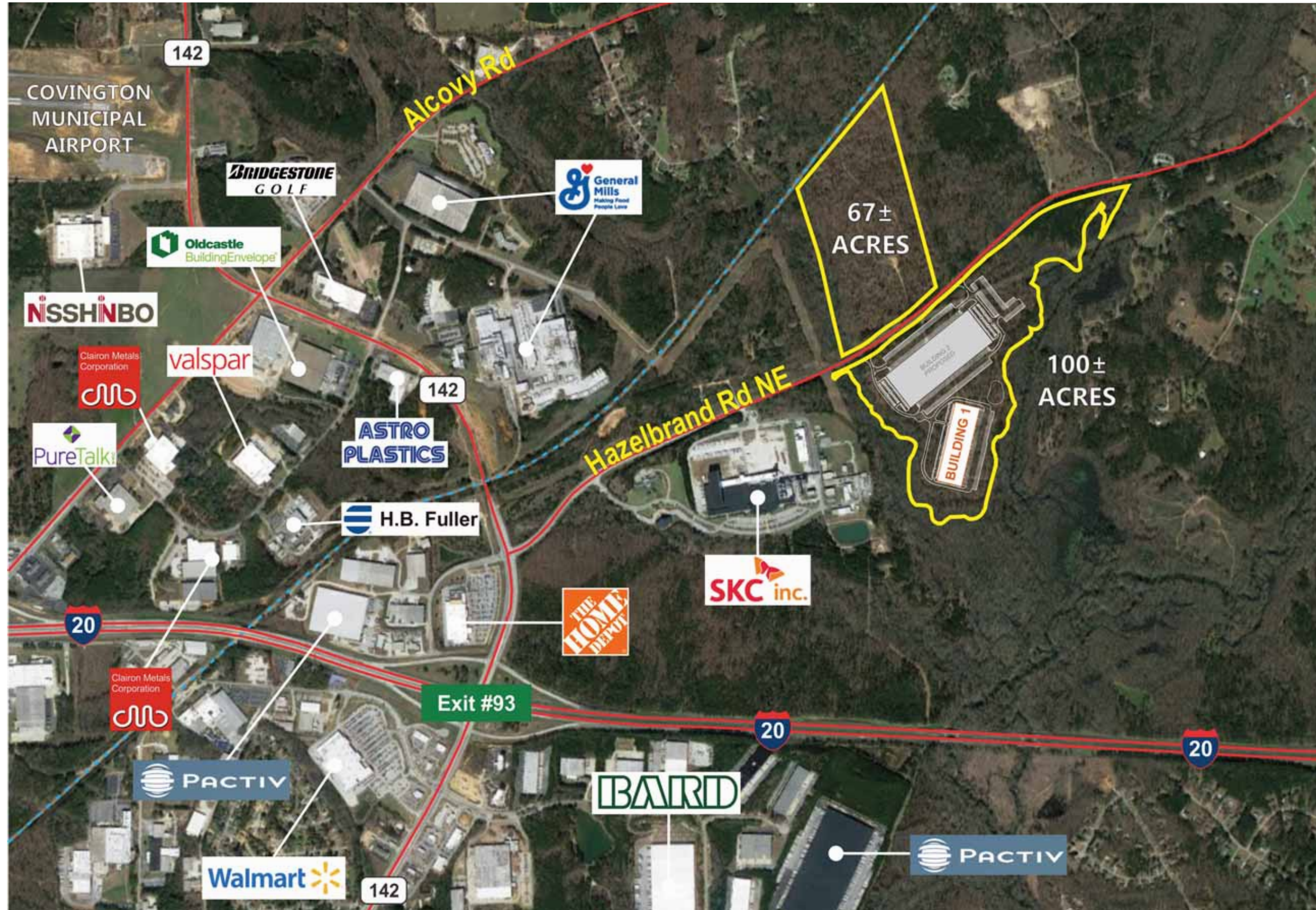
FOR MORE
INFORMATION
PLEASE CONTACT

BOBBY MAYSON
770.729.2817
bmayson@lavista.com

OWNED AND MANAGED BY

AshleyCapital
opportunity into value





18139 Logistics Parkway, NE
Covington, GA 30014

161,238 SF AVAILABLE

Rear Load Design

36' Clear Height

52' x 56' Column Spacing
with 60' Speed Bay

195' Truck Court
with 60' Concrete Apron

(57) 9' x 10' Dock-High Doors

(2) 13' x 14' Drive-In Doors

LED lighting with Motion Sensors

TPO Roof

ESFR Fire Protection

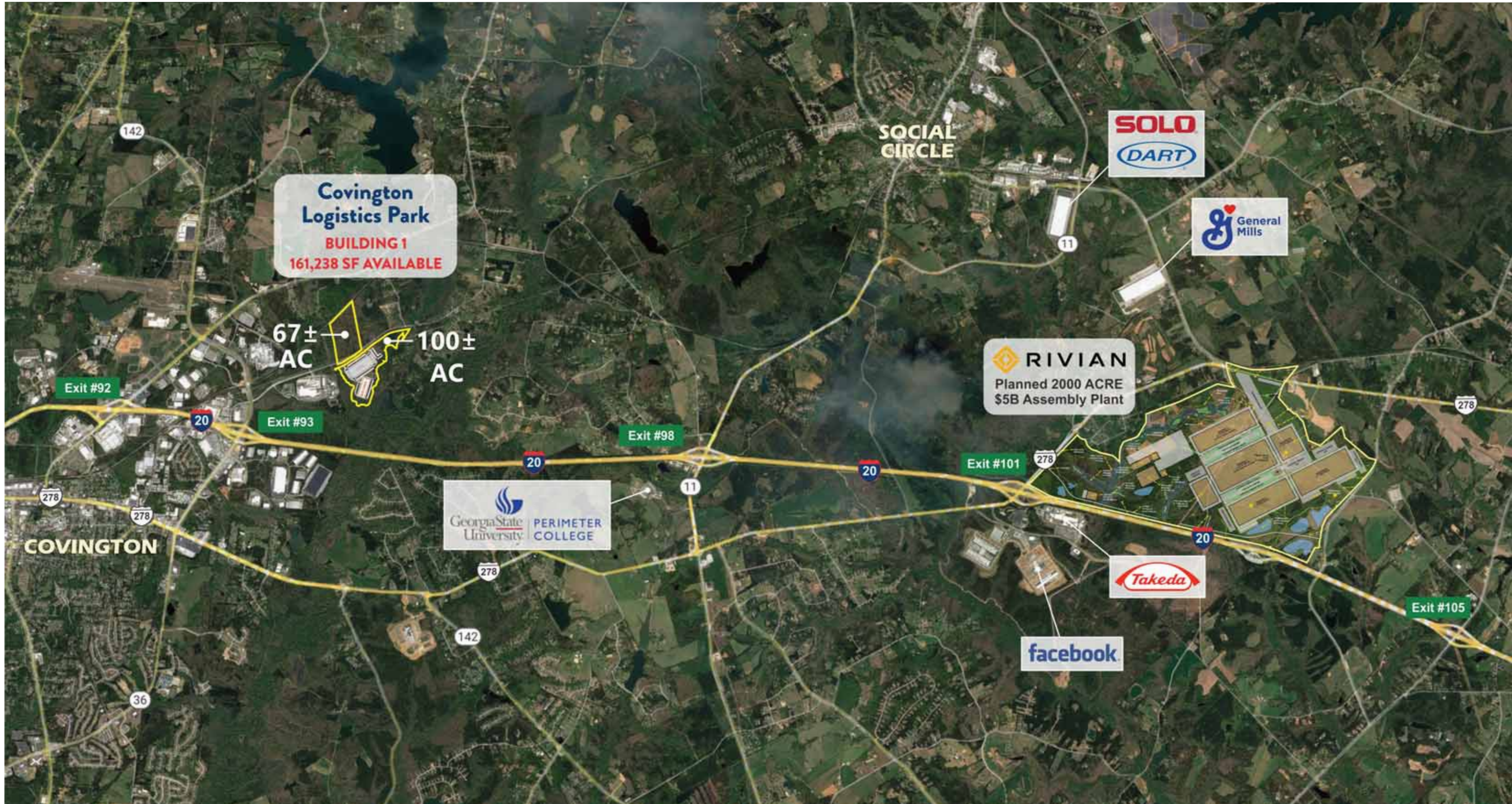
Located in a TIER 2 COUNTY,
which provides a \$3000 tax credit
for each new job created for up to
5 years

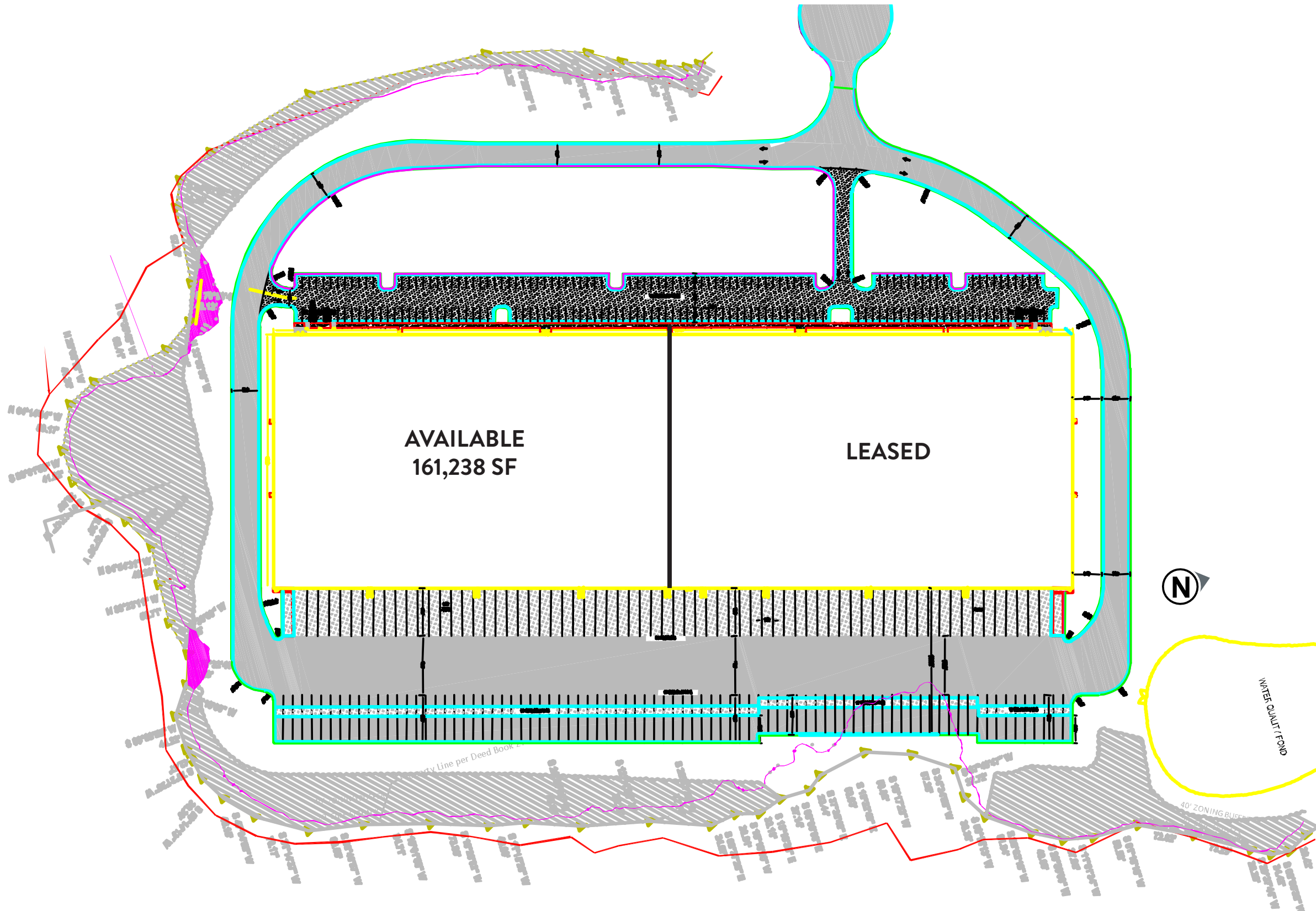
FOR MORE
INFORMATION
PLEASE CONTACT

BOBBY MAYSON
770.729.2817
bmayson@lavista.com

OWNED AND MANAGED BY

AshleyCapital
opportunity into value





18139 Logistics Parkway, NE
Covington, GA 30014

161,238 SF AVAILABLE

Rear Load Design

36' Clear Height

52' x 56' Column Spacing
with 60' Speed Bay

195' Truck Court
with 60' Concrete Apron

(57) 9' x 10' Dock-High Doors

(2) 13' x 14' Drive-In Doors

LED lighting with Motion Sensors

TPO Roof

ESFR Fire Protection

Located in a TIER 2 COUNTY,
which provides a \$3000 tax credit
for each new job created for up to
5 years

FOR MORE
INFORMATION
PLEASE CONTACT

BOBBY MAYSON
770.729.2817
bmayson@lavista.com

OWNED AND MANAGED BY

AshleyCapital
opportunity into value

18139 Logistics Parkway, NE
Covington, GA 30014

PROPERTY SPECIFICATIONS

SIZE Total: 322,560 Square Feet
Available: 161,238 Square Feet

DIMENSIONS 320' x 1008' (Rear Load Design)

SITE 32.75 Acres

CONSTRUCTION

Walls: Tilt-Up Concrete Panels
Slab: 7" Concrete Slab
Roof: TPO (45 mil / R22 Insulation)
Ceiling Height: 36' Clear Minimum
Column Spacing: 52' x 56' with 60' speed bay
Clerestory Windows: 91

ELECTRICAL POWER 2000 Amps / 480 Volt / 3 Phase

SPRINKLER ESFR (2000 GPM Fire Pump)

LIGHTING LED with Motion Sensors

WATER / SEWER City of Covington

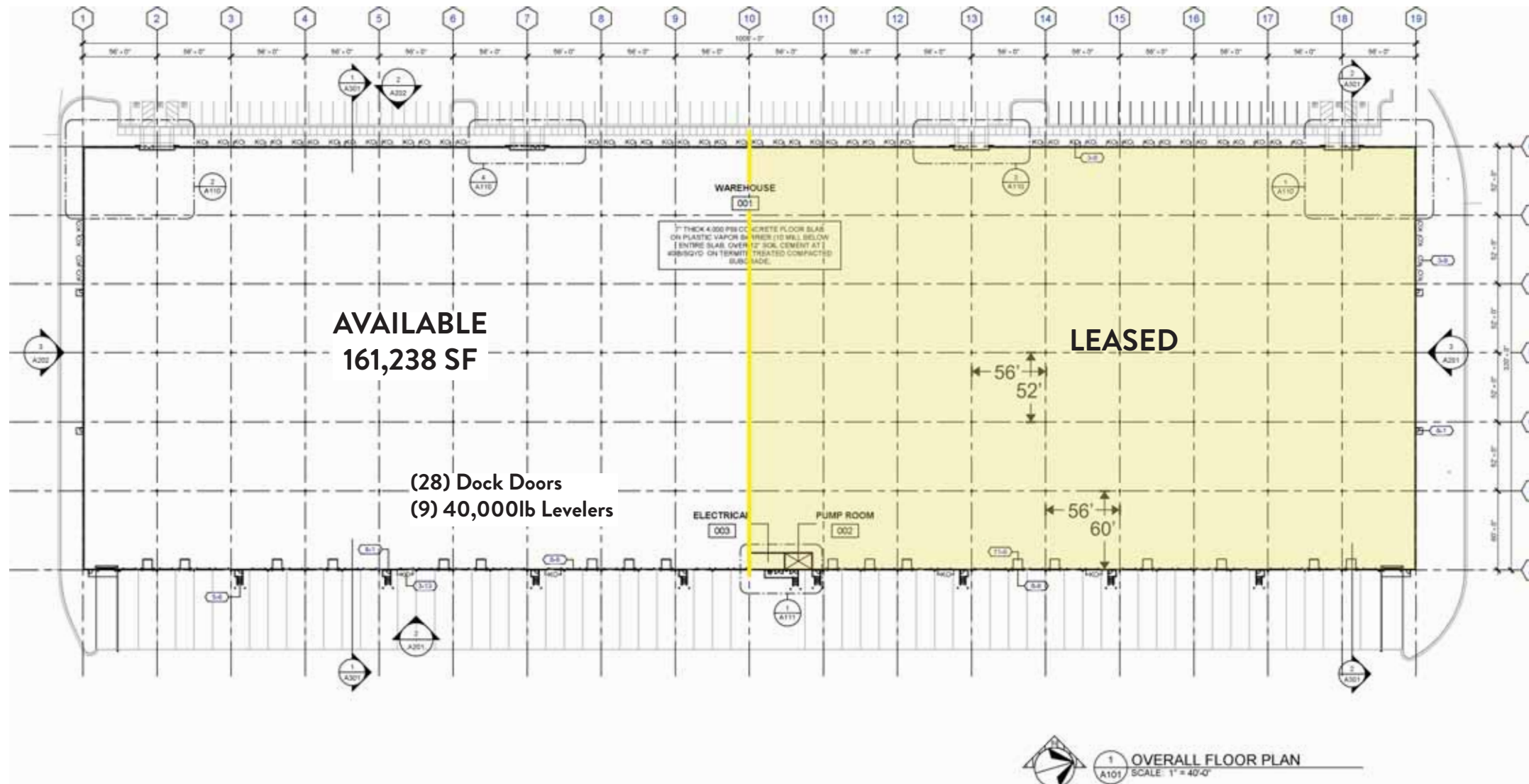
NATURAL GAS Atlanta Gas Light

TRUCK LOADING (57) 9' x 10' Dock-High Doors
(18) 40,000 lb. Hydraulic Levelers
(2) 13' x 14' Drive-in Doors
195' Truck Court with 60' Concrete Apron

ZONING ID (Industrial Distribution)

PARKING 188 Automobile
84 Trailer Staging (44 Future Trailer Staging Spots)

TRANSPORTATION Located Approximately 1 mile from I-20 via
Exit #93 (GA Hwy 142)



FOR MORE INFORMATION PLEASE CONTACT
BOBBY MAYSON
770.729.2817
bmayson@lavista.com