

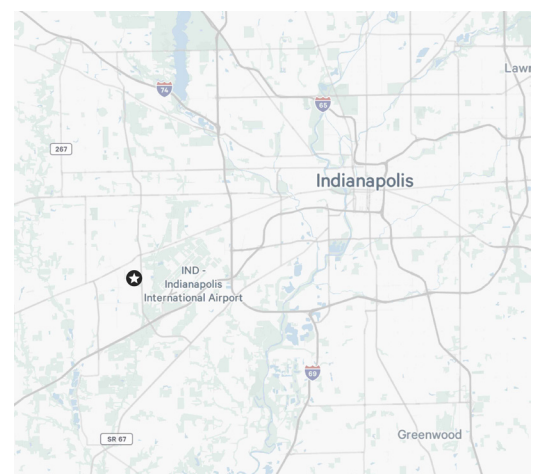
# 78,458 SF Sublease Available

441 Airtech Parkway,  
Plainfield, IN 46168

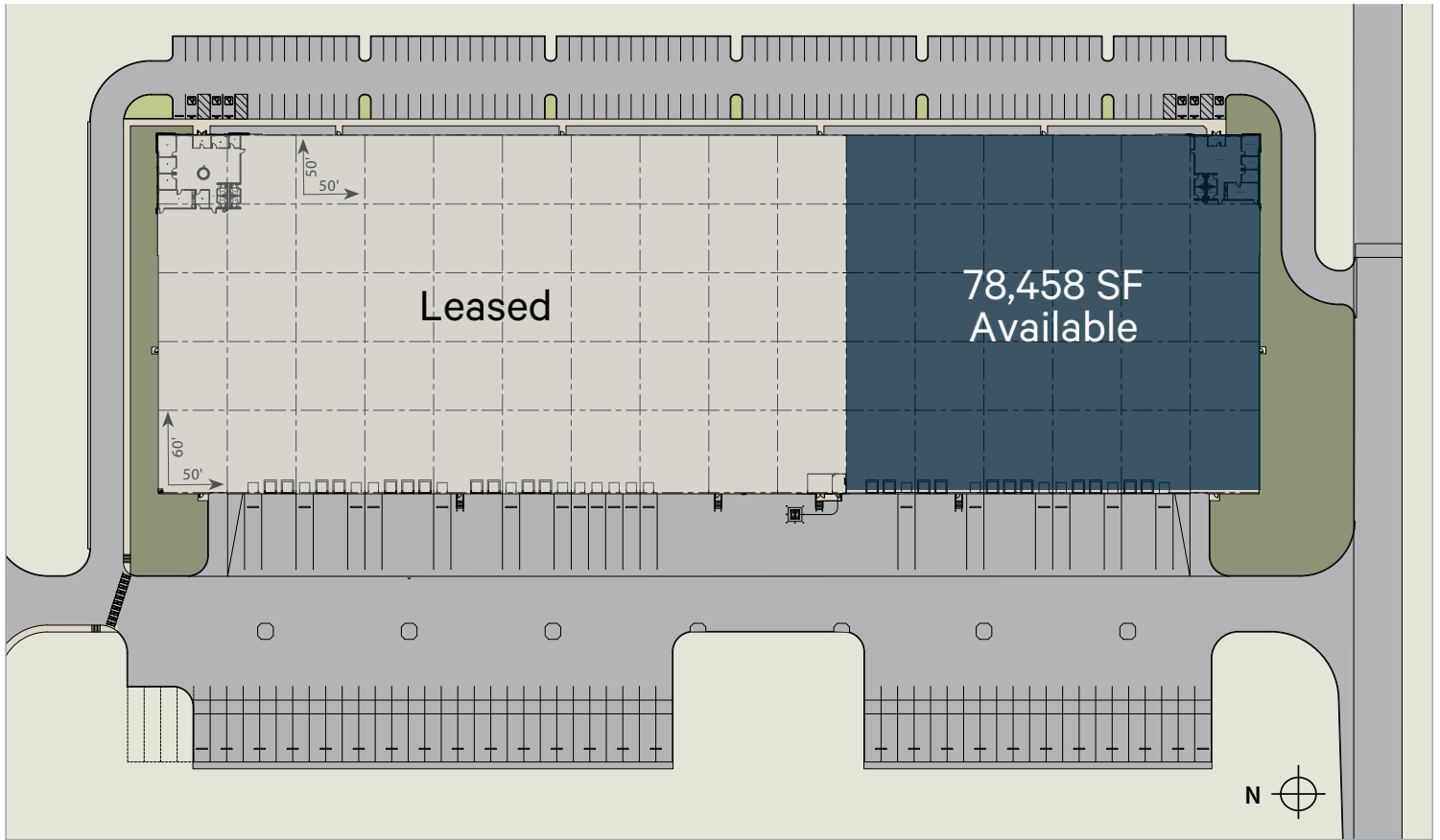


## Property Highlights

- + Available: 78,458 SF
- + Office: 2,400 SF
- + Total Bldg: 208,733 SF
- + Clear Height: 32'
- + Dock Doors: 17
- + Drive In Doors: 1
- + Column Spacing: 50' x 50'
- + Separate auto and truck entrances
- + Temperature controlled room to store goods at 60° constant temperature
- + Real estate tax abatement in place
- + Sublease through 7/31/2031



Siteplan



Space Specifications

<b>Building Size</b>	208,733 SF
<b>Available SF</b>	78,458 SF
<b>Land Area</b>	22.13 Acres
<b>Dock Doors</b>	17 (11 with dock plates)
<b>Drive-In Doors</b>	1
<b>Dock Equipment</b>	8 equipped w/ leveler, seals & bumpers (35,000 lb. capacity)
<b>Clear Height</b>	32'
<b>Car Parking</b>	50 Spaces
<b>Truck Parking</b>	21 Spaces
<b>Truck Court Depth</b>	140'
<b>Zoning</b>	I-2

<b>Year Built</b>	2019
<b>Fire Protection</b>	ESFR
<b>Construction Type</b>	Precast insulated concrete panels
<b>Roof System</b>	Single ply 45 mil, TPO
<b>HVAC</b>	Roof mounted 80/20 make-up air units (heat only)
<b>Lighting</b>	LED with motion sensors
<b>Power</b>	800 amp, 480/277 volt, 3-phase service
<b>Utilities</b>	All City Utilities
<b>Column Spacing</b>	50' x 50' throughout Spacing 50' x 60' at bay

## Photos



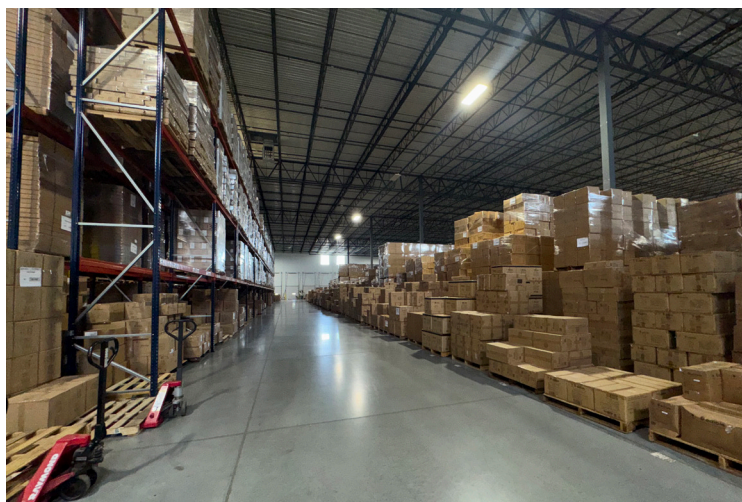
Entrance



Lobby



Temperature Controlled Air Condition Room



Warehouse

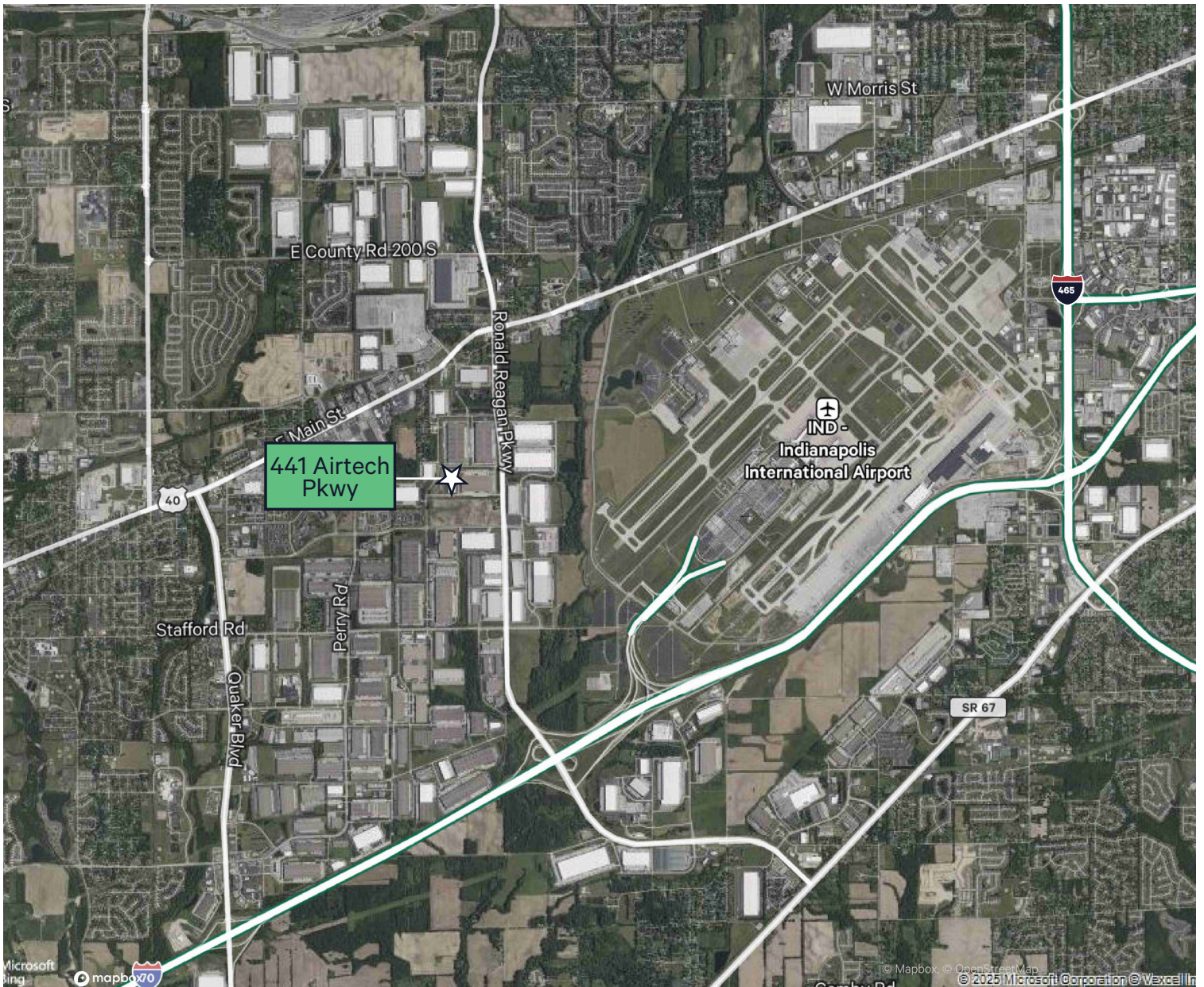


Warehouse



Dock Doors

## Property Aerial



## Contact Us

### Mark Witt

Executive Vice President  
317 696 1029  
mark.writt@cbre.com

### Nikki Leahy

Sales Assistant  
317 269 1049  
nikki.leahy@cbre.com

© 2025 CBRE, Inc. All rights reserved. This information has been obtained from sources believed reliable, but has not been verified for accuracy or completeness. You should conduct a careful, independent investigation of the property and verify all information. Any reliance on this information is solely at your own risk. CBRE and the CBRE logo are service marks of CBRE, Inc. All other marks displayed on this document are the property of their respective owners, and the use of such logos does not imply any affiliation with or endorsement of CBRE. Photos herein are the property of their respective owners. Use of these images without the express written consent of the owner is prohibited.