

1,976 SF AVAILABLE

FORMER SMOOTHIE KING W/ DRIVE THRU



FOR LEASE

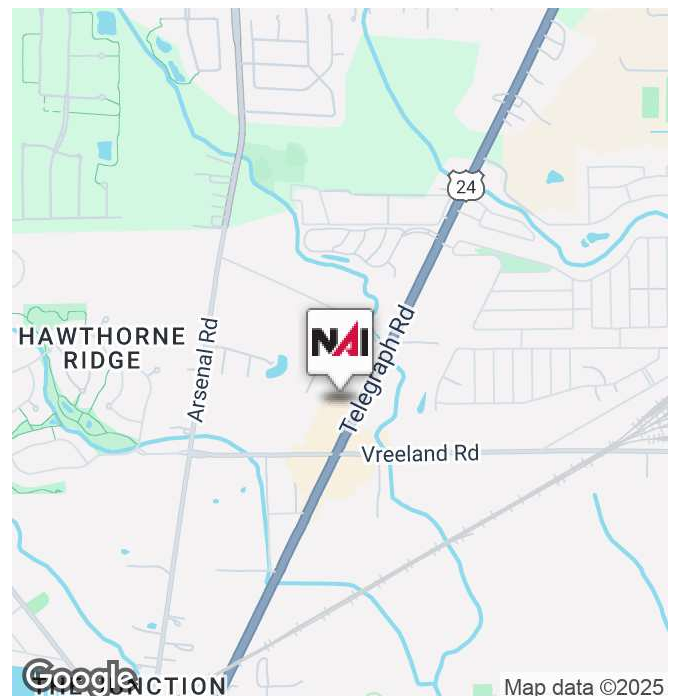


Tel-Rock Plaza

26842-27000 Telegraph Rd
Flat Rock, Michigan 48134

Property Highlights

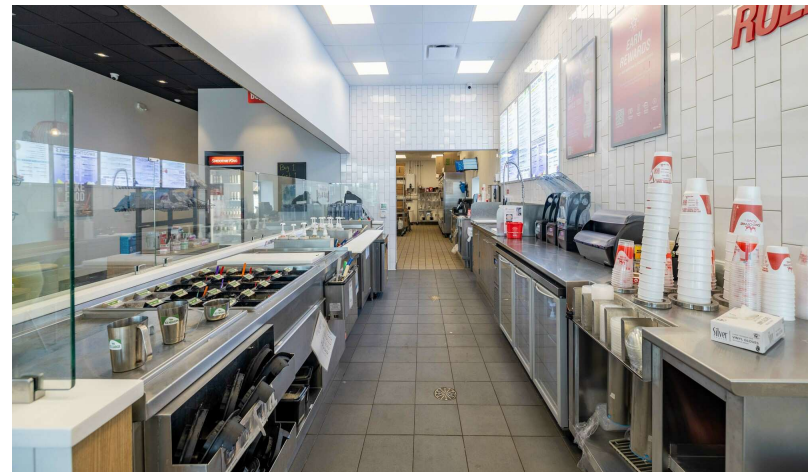
- **1,976 SF with Drive Thru**
- Ample Parking
- Excellent Visibility on Telegraph Rd
- Join CVS, Leo's Coney Island, Wing Snob, and H&R Block
- Notable Retailer Nearby Include: Meijer, Dunkin Donuts, McDonalds, Family Dollar, Auto Zone and Tim Hortons
- Located Near Detroit Metropolitan Airport and Ford Flat Rock Assembly Plant



1,976 SF AVAILABLE
FORMER SMOOTHIE KING W/ DRIVE THRU



FOR LEASE



1,976 SF AVAILABLE

FORMER SMOOTHIE KING W/ DRIVE THRU



FOR LEASE



Commercial Real Estate Services, Worldwide.

www.naifarbman.com

John Harwood

Senior Vice President | 734.755.0488
harwood@farbman.com

Brandon Ben-Ezra

Leasing and Sales Associate | 947.517.6226
ben-ezra@farbman.com

Gavin Mills

Leasing and Sales Associate | 908.304.4534
mills@farbman.com

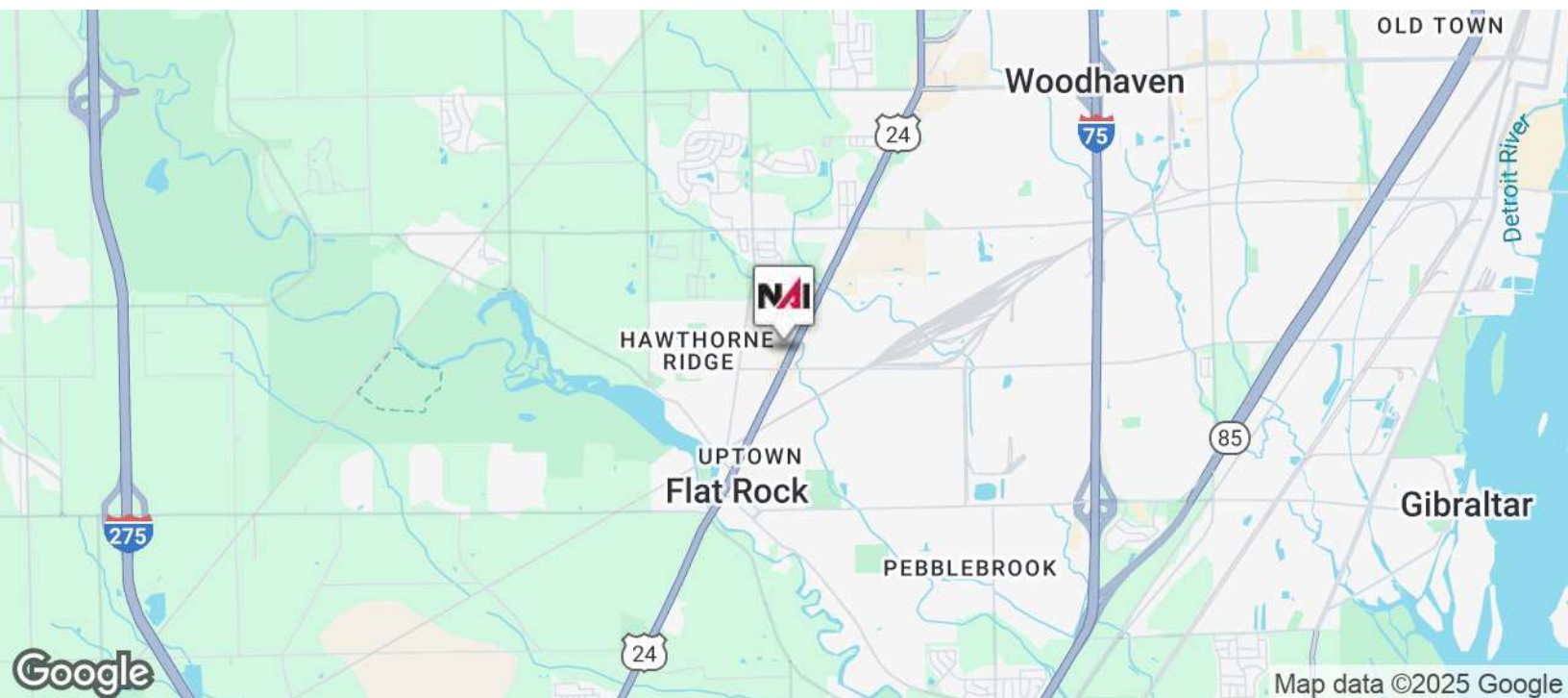
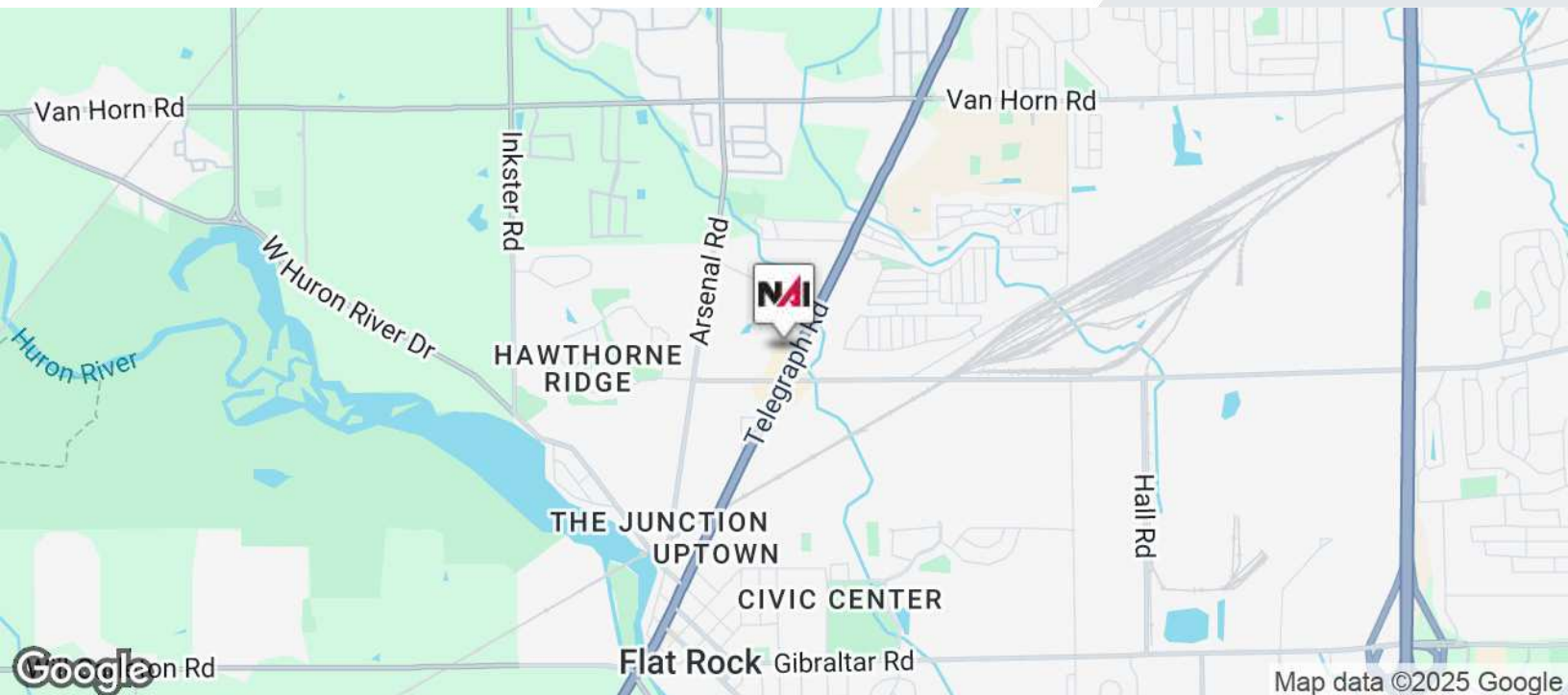
NO WARRANTY, EXPRESS OR IMPLIED, IS MADE AS TO THE ACCURACY OF THE INFORMATION CONTAINED HEREIN. THIS INFORMATION IS SUBMITTED SUBJECT TO ERRORS, OMISSIONS, CHANGE OF PRICE, RENTAL OR OTHER CONDITIONS, WITHDRAWAL WITHOUT NOTICE, AND IS SUBJECT TO ANY SPECIAL LISTING CONDITIONS IMPOSED BY OUR PRINCIPALS. COOPERATING BROKERS, BUYERS, TENANTS AND OTHER PARTIES WHO RECEIVE THIS DOCUMENT SHOULD NOT RELY ON IT, BUT SHOULD USE IT AS A STARTING POINT OF ANALYSIS, AND SHOULD INDEPENDENTLY CONFIRM THE ACCURACY OF THE INFORMATION CONTAINED HEREIN THROUGH A DUE DILIGENCE REVIEW OF THE BOOKS, RECORDS, FILES AND DOCUMENTS THAT CONSTITUTE RELIABLE SOURCES OF THE INFORMATION DESCRIBED HEREIN. LOGOS ARE FOR IDENTIFICATION PURPOSES ONLY AND MAY BE TRADEMARKS OF THEIR RESPECTIVE COMPANIES. NAI Farbman, INC. CA BRE LIC. #01990696.

1,976 SF AVAILABLE

FORMER SMOOTHIE KING W/ DRIVE THRU



FOR LEASE



Commercial Real Estate Services, Worldwide.

www.naifarbman.com

John Harwood

Senior Vice President | 734.755.0488
harwood@farbman.com

Brandon Ben-Ezra

Leasing and Sales Associate | 947.517.6226
ben-ezra@farbman.com

Gavin Mills

Leasing and Sales Associate | 908.304.4534
mills@farbman.com

NO WARRANTY, EXPRESS OR IMPLIED, IS MADE AS TO THE ACCURACY OF THE INFORMATION CONTAINED HEREIN. THIS INFORMATION IS SUBMITTED SUBJECT TO ERRORS, OMISSIONS, CHANGE OF PRICE, RENTAL OR OTHER CONDITIONS, WITHDRAWAL WITHOUT NOTICE, AND IS SUBJECT TO ANY SPECIAL LISTING CONDITIONS IMPOSED BY OUR PRINCIPALS. COOPERATING BROKERS, BUYERS, TENANTS AND OTHER PARTIES WHO RECEIVE THIS DOCUMENT SHOULD NOT RELY ON IT, BUT SHOULD USE IT AS A STARTING POINT OF ANALYSIS, AND SHOULD INDEPENDENTLY CONFIRM THE ACCURACY OF THE INFORMATION CONTAINED HEREIN THROUGH A DUE DILIGENCE REVIEW OF THE BOOKS, RECORDS, FILES AND DOCUMENTS THAT CONSTITUTE RELIABLE SOURCES OF THE INFORMATION DESCRIBED HEREIN. LOGOS ARE FOR IDENTIFICATION PURPOSES ONLY AND MAY BE TRADEMARKS OF THEIR RESPECTIVE COMPANIES. NAI Farbman, INC. CA BRE LIC. #01990696.

1,976 SF AVAILABLE

FORMER SMOOTHIE KING W/ DRIVE THRU



FOR LEASE



NAI Farbman

Commercial Real Estate Services, Worldwide.

www.naifarbman.com

John Harwood
Senior Vice President | 734.755.0488
harwood@farbman.com

Brandon Ben-Ezra
Leasing and Sales Associate | 947.517.6226
ben-ezra@farbman.com

Gavin Mills
Leasing and Sales Associate | 908.304.4534
mills@farbman.com

NO WARRANTY, EXPRESS OR IMPLIED, IS MADE AS TO THE ACCURACY OF THE INFORMATION CONTAINED HEREIN. THIS INFORMATION IS SUBMITTED SUBJECT TO ERRORS, OMISSIONS, CHANGE OF PRICE, RENTAL OR OTHER CONDITIONS, WITHDRAWAL WITHOUT NOTICE, AND IS SUBJECT TO ANY SPECIAL LISTING CONDITIONS IMPOSED BY OUR PRINCIPALS. COOPERATING BROKERS, BUYERS, TENANTS AND OTHER PARTIES WHO RECEIVE THIS DOCUMENT SHOULD NOT RELY ON IT, BUT SHOULD USE IT AS A STARTING POINT OF ANALYSIS, AND SHOULD INDEPENDENTLY CONFIRM THE ACCURACY OF THE INFORMATION CONTAINED HEREIN THROUGH A DUE DILIGENCE REVIEW OF THE BOOKS, RECORDS, FILES AND DOCUMENTS THAT CONSTITUTE RELIABLE SOURCES OF THE INFORMATION DESCRIBED HEREIN. LOGOS ARE FOR IDENTIFICATION PURPOSES ONLY AND MAY BE TRADEMARKS OF THEIR RESPECTIVE COMPANIES. NAI Farbman, INC. CA BRE LIC. #01990696.

1,976 SF AVAILABLE

FORMER SMOOTHIE KING W/ DRIVE THRU



FOR LEASE

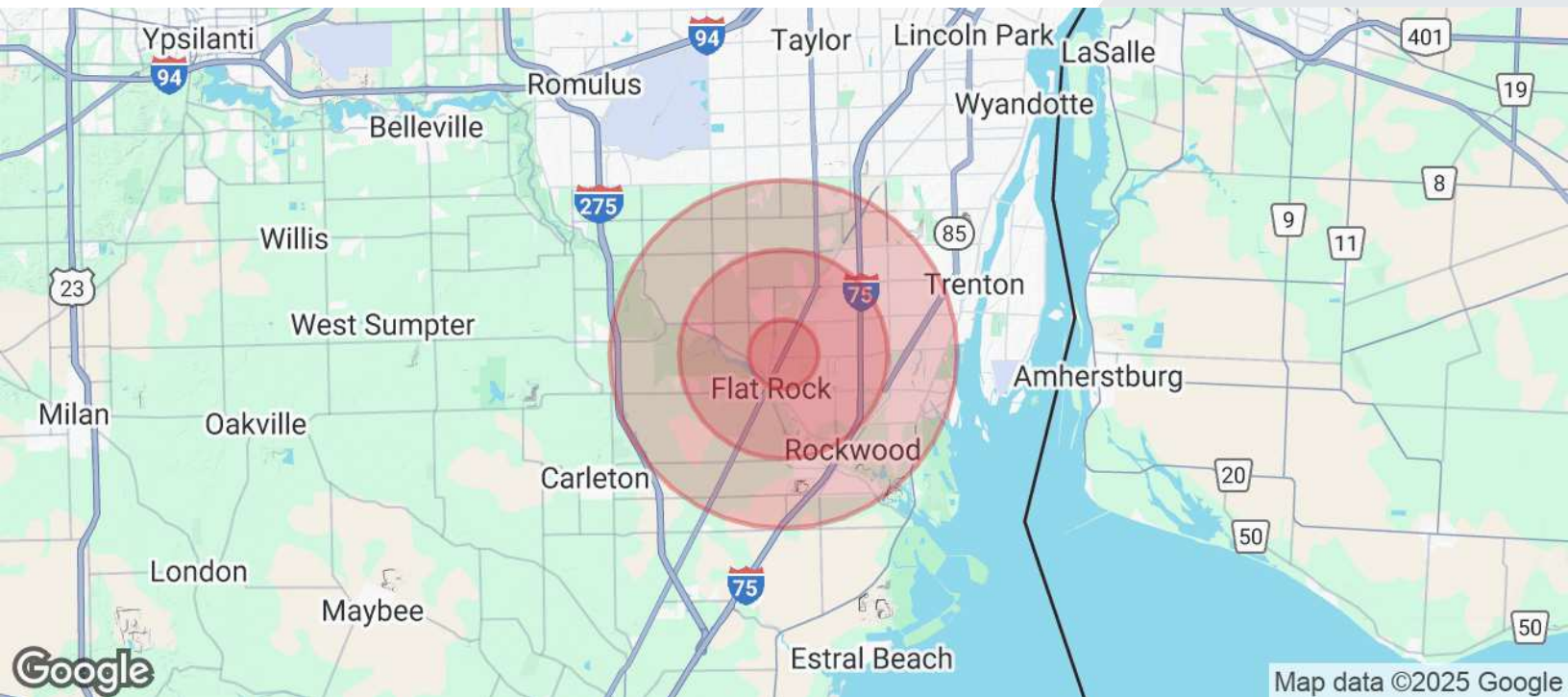


1,976 SF AVAILABLE

FORMER SMOOTHIE KING W/ DRIVE THRU



FOR LEASE



POPULATION	1 MILE	3 MILES	5 MILES
Total Population	7,052	43,665	86,668
Average Age	38.3	40.3	41.8
Average Age (Male)	35.3	36.3	36.7
Average Age (Female)	37.2	37.5	38.5
HOUSEHOLDS & INCOME	1 MILE	3 MILES	5 MILES
Total Households	2,703	16,479	33,557
# of Persons per HH	2.59	2.64	2.56
Average HH Income	\$93,327	\$31,721	\$90,832
Average House Value	\$160,036	\$179,934	\$175,055

2020 American Community Survey (ACS)



Commercial Real Estate Services, Worldwide.

www.naifarbman.com

John Harwood

Senior Vice President | 734.755.0488
harwood@farbman.com

Brandon Ben-Ezra

Leasing and Sales Associate | 947.517.6226
ben-ezra@farbman.com

Gavin Mills

Leasing and Sales Associate | 908.304.4534
mills@farbman.com

NO WARRANTY, EXPRESS OR IMPLIED, IS MADE AS TO THE ACCURACY OF THE INFORMATION CONTAINED HEREIN. THIS INFORMATION IS SUBMITTED SUBJECT TO ERRORS, OMISSIONS, CHANGE OF PRICE, RENTAL OR OTHER CONDITIONS, WITHDRAWAL WITHOUT NOTICE, AND IS SUBJECT TO ANY SPECIAL LISTING CONDITIONS IMPOSED BY OUR PRINCIPALS. COOPERATING BROKERS, BUYERS, TENANTS AND OTHER PARTIES WHO RECEIVE THIS DOCUMENT SHOULD NOT RELY ON IT, BUT SHOULD USE IT AS A STARTING POINT OF ANALYSIS, AND SHOULD INDEPENDENTLY CONFIRM THE ACCURACY OF THE INFORMATION CONTAINED HEREIN THROUGH A DUE DILIGENCE REVIEW OF THE BOOKS, RECORDS, FILES AND DOCUMENTS THAT CONSTITUTE RELIABLE SOURCES OF THE INFORMATION DESCRIBED HEREIN. LOGOS ARE FOR IDENTIFICATION PURPOSES ONLY AND MAY BE TRADEMARKS OF THEIR RESPECTIVE COMPANIES. NAI Farbman, INC. CA BRE LIC. #01990696.