

GEMINI ROSEMONT TECHNOLOGY PARK

3400 CENTRAL EXPWY, SUITE 110 | SANTA CLARA

3400

±18,749 SF

SINGLE-STORY R&D FOR LEASE

NEWMARK

JOE KELLY / 408.987.4111 / joe.kelly@nmrk.com / CA RE Lic #01420963

GEMINI ROSEMONT

TECHNOLOGY PARK

HIGHLIGHTS

- Desirable Silicon Valley location
- Modern finishes and technology upgrades
- Open layout with abundant natural light
- Large dedicated outdoor amenity area
- Grade level loading
- 3.4 parking spaces per 1,000 RSF
- Conveniently located off-site amenities
- Superior regional access via US 101, CA-237 and the Central, Lawrence and San Tomas Expressways
- 10 minutes from Mineta San Jose International Airport
- Close proximity to Caltrain
- Available now

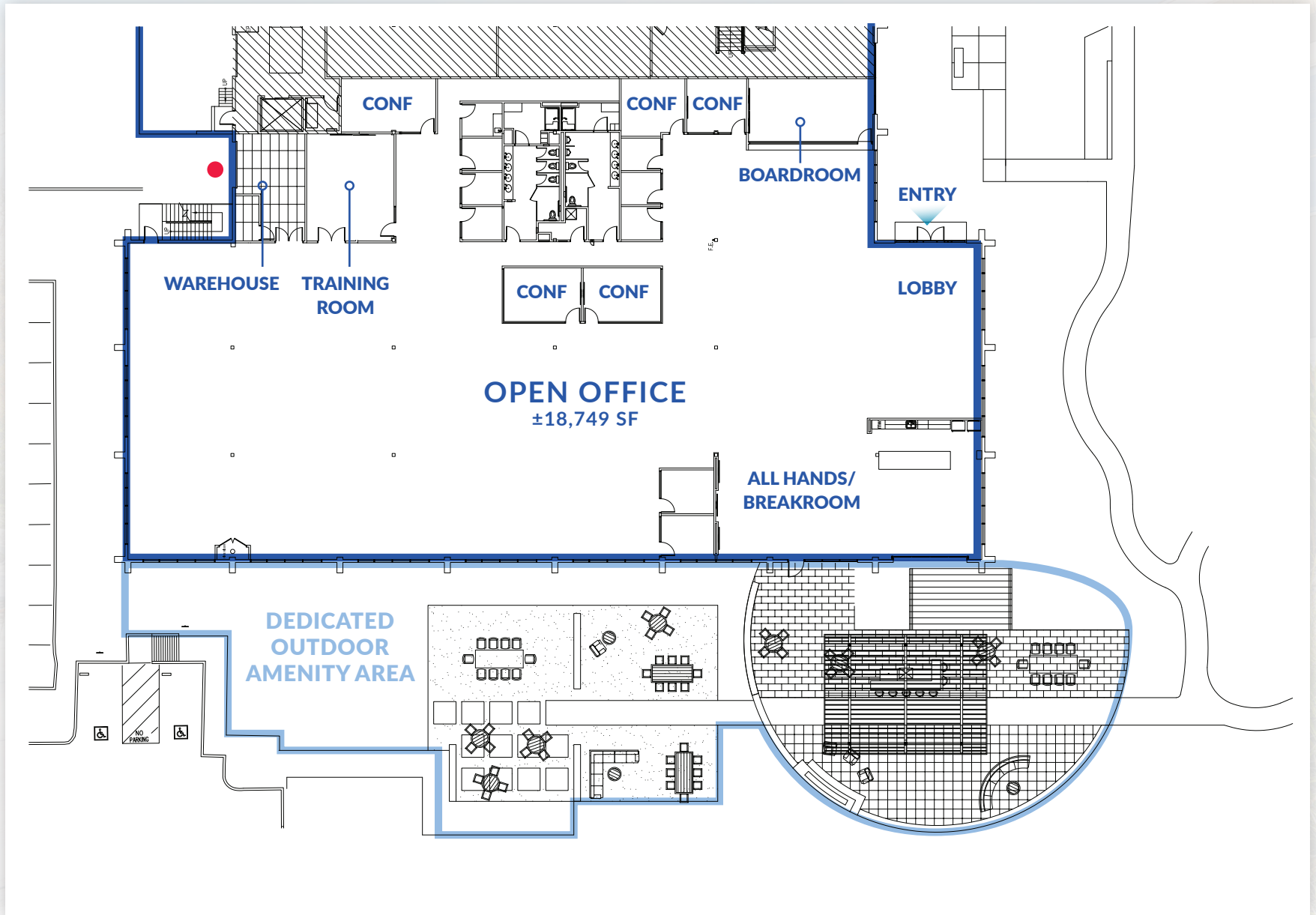


GEMINI ROSEMONT
TECHNOLOGY PARK

LOCATION

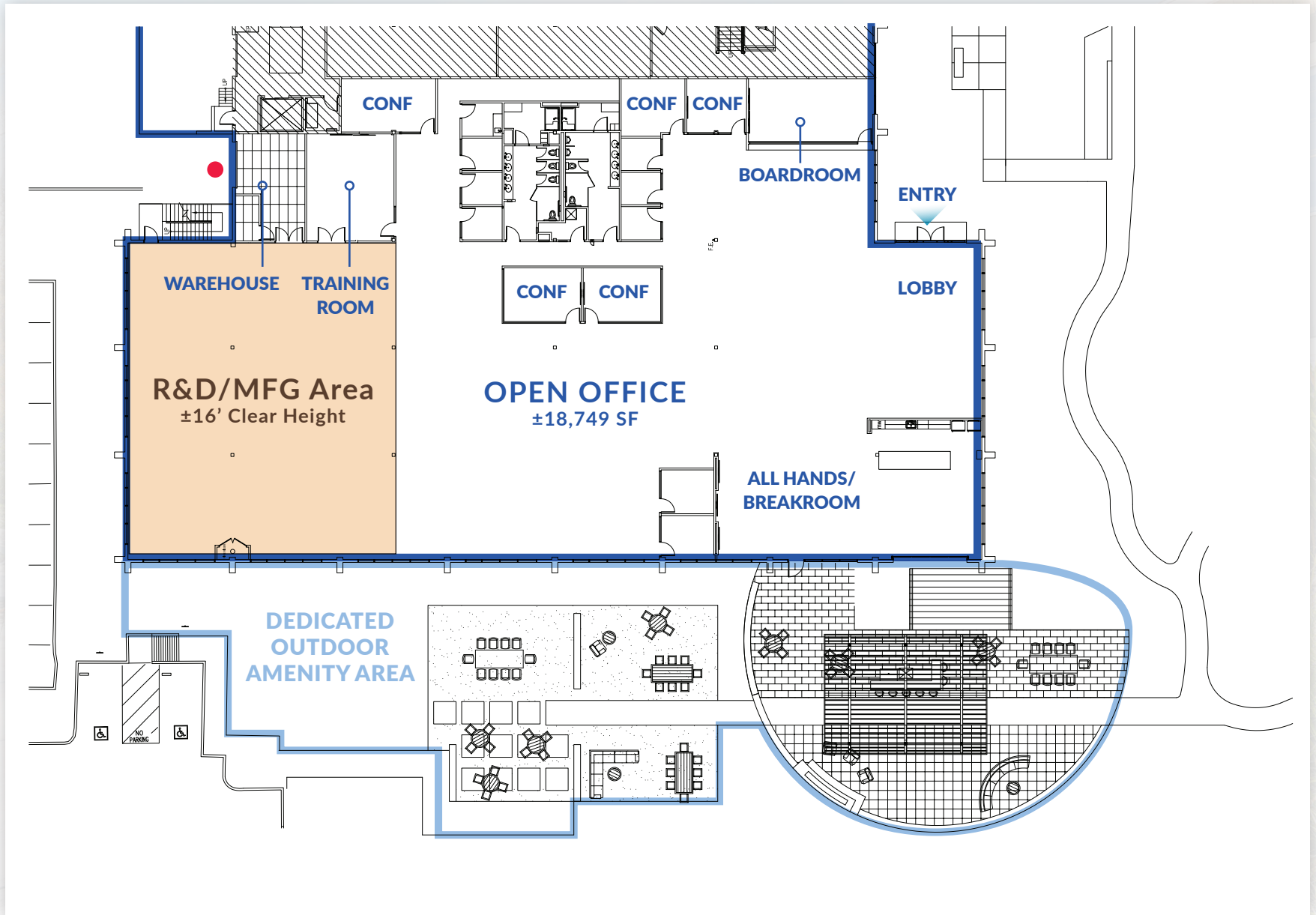


FLOORPLAN



● Grade Level Door

FLOORPLAN



● Grade Level Door

GEMINI ROSEMONT
TECHNOLOGY PARK



Open layout with
abundant natural light



GEMINI ROSEMONT
TECHNOLOGY PARK

Modern finishes and
technology upgrades

GEMINI ROSEMONT
TECHNOLOGY PARK



Large, dedicated
outdoor amenity area



AMENITIES


237

Great America Pkwy

MERCADO SHOPPING CENTER



RIVERMARK VILLAGE



Tasman Dr

Zanker Rd

Great Mall Pkwy



Sheraton
HOTELS & RESORTS



SONESTA
SILICON VALLEY

880



HOMESWOOD SUITES
Hilton

Montague Expwy
N 1st St



101



1.4 MILES

Central Expressway

GEMINI ROSEMONT TECHNOLOGY PARK



82



880

87

GEMINI ROSEMONT TECHNOLOGY PARK

3400 CENTRAL EXPWY, SUITE 110 | SANTA CLARA

3400

±18,749 SF
SINGLE-STORY R&D FOR LEASE

The information contained herein has been obtained from sources deemed reliable but has not been verified and no guarantee, warranty or representation, either express or implied, is made with respect to such information. Terms of sale or lease and availability are subject to change or withdrawal without notice. MP23-376 • 08/24