

2,500 SF OFFICE / MEDICAL



FOR LEASE



Metropolitan Parkway Medical Center

2609 Metro Parkway
Sterling Heights, Michigan 48310

Property Description

NAI FARBMAN is pleased to present the Metropolitan Parkway Medical Center for lease with prominent monument signage available, located between Ryan Rd & Dequindre Rd. This high quality medical/professional office is in a prime suburban location of Sterling Heights along Metropolitan Parkway, a major thoroughfare, boasting updated finishes and carpentry throughout.

Ideally located along a heavily traveled Metro Parkway with main road exposure and visibility, where the trade area includes abundant local amenities, including shopping centers, Fortune 500 retailers, hotels, dining establishments and a host of personal service professionals as well as major employers and hospitals.

The 2,500 SF suite is well-plumbed for medical use, meticulously clean and move-in ready for immediate occupancy. Landlord manages the property whereby all major building systems and mechanicals are well-serviced and newer to ensure efficiency and reliability.

Property Highlights

- Class-A Office/Medical – Move-In Ready - Located in the heart of Sterling Heights
- High Image Office/Medical Building
- 2,500 SF Available (Suite 300)
- Embedded Plumbing/ Well Plumbed for Medical Use
- Prominent Visibility & Signage on Metro Parkway
- Easy Access to I-696, M-59, Van Dyke Ave
- \$20.00-25.00 NNN PSF + Utilities



Commercial Real Estate Services, Worldwide.

www.naifarbman.com

Wendy Acho

Leasing and Sales Associate | 248.563.0739
acho@farbman.com

NO WARRANTY, EXPRESS OR IMPLIED, IS MADE AS TO THE ACCURACY OF THE INFORMATION CONTAINED HEREIN. THIS INFORMATION IS SUBMITTED SUBJECT TO ERRORS, OMISSIONS, CHANGE OF PRICE, RENTAL OR OTHER CONDITIONS, WITHDRAWAL WITHOUT NOTICE, AND IS SUBJECT TO ANY SPECIAL LISTING CONDITIONS IMPOSED BY OUR PRINCIPALS. COOPERATING BROKERS, BUYERS, TENANTS AND OTHER PARTIES WHO RECEIVE THIS DOCUMENT SHOULD NOT RELY ON IT, BUT SHOULD USE IT AS A STARTING POINT OF ANALYSIS, AND SHOULD INDEPENDENTLY CONFIRM THE ACCURACY OF THE INFORMATION CONTAINED HEREIN THROUGH A DUE DILIGENCE REVIEW OF THE BOOKS, RECORDS, FILES AND DOCUMENTS THAT CONSTITUTE RELIABLE SOURCES OF THE INFORMATION DESCRIBED HEREIN. LOGOS ARE FOR IDENTIFICATION PURPOSES ONLY AND MAY BE TRADEMARKS OF THEIR RESPECTIVE COMPANIES. NAI Farbman, INC. CA BRE LIC. #01990696.

2,500 SF OFFICE / MEDICAL



FOR LEASE



NAI Farbman

Commercial Real Estate Services, Worldwide.

www.naifarbman.com

Wendy Acho

Leasing and Sales Associate | 248.563.0739

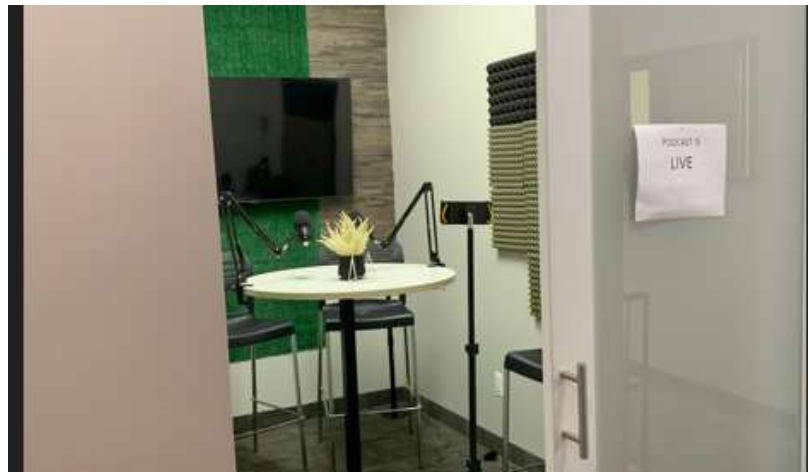
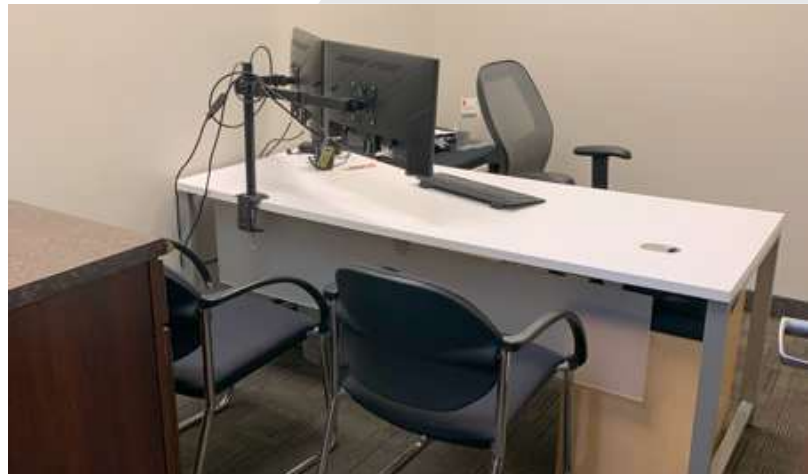
acho@farbman.com

NO WARRANTY, EXPRESS OR IMPLIED, IS MADE AS TO THE ACCURACY OF THE INFORMATION CONTAINED HEREIN. THIS INFORMATION IS SUBMITTED SUBJECT TO ERRORS, OMISSIONS, CHANGE OF PRICE, RENTAL OR OTHER CONDITIONS, WITHDRAWAL WITHOUT NOTICE, AND IS SUBJECT TO ANY SPECIAL LISTING CONDITIONS IMPOSED BY OUR PRINCIPALS. COOPERATING BROKERS, BUYERS, TENANTS AND OTHER PARTIES WHO RECEIVE THIS DOCUMENT SHOULD NOT RELY ON IT, BUT SHOULD USE IT AS A STARTING POINT OF ANALYSIS, AND SHOULD INDEPENDENTLY CONFIRM THE ACCURACY OF THE INFORMATION CONTAINED HEREIN THROUGH A DUE DILIGENCE REVIEW OF THE BOOKS, RECORDS, FILES AND DOCUMENTS THAT CONSTITUTE RELIABLE SOURCES OF THE INFORMATION DESCRIBED HEREIN. LOGOS ARE FOR IDENTIFICATION PURPOSES ONLY AND MAY BE TRADEMARKS OF THEIR RESPECTIVE COMPANIES. NAI Farbman, INC. CA BRE LIC. #01990696.

2,500 SF OFFICE / MEDICAL



FOR LEASE



NAI Farbman

Commercial Real Estate Services. Worldwide.
www.naifarbman.com

Wendy Acho

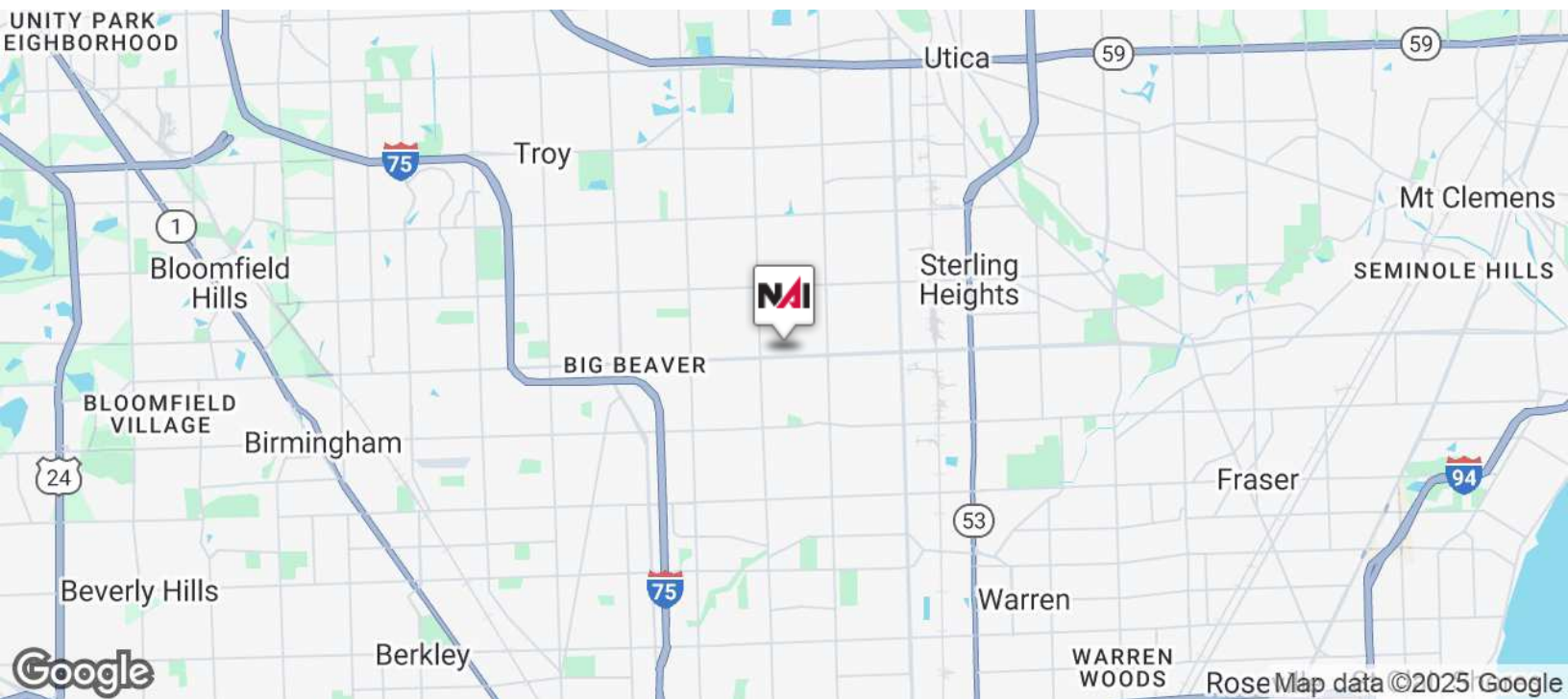
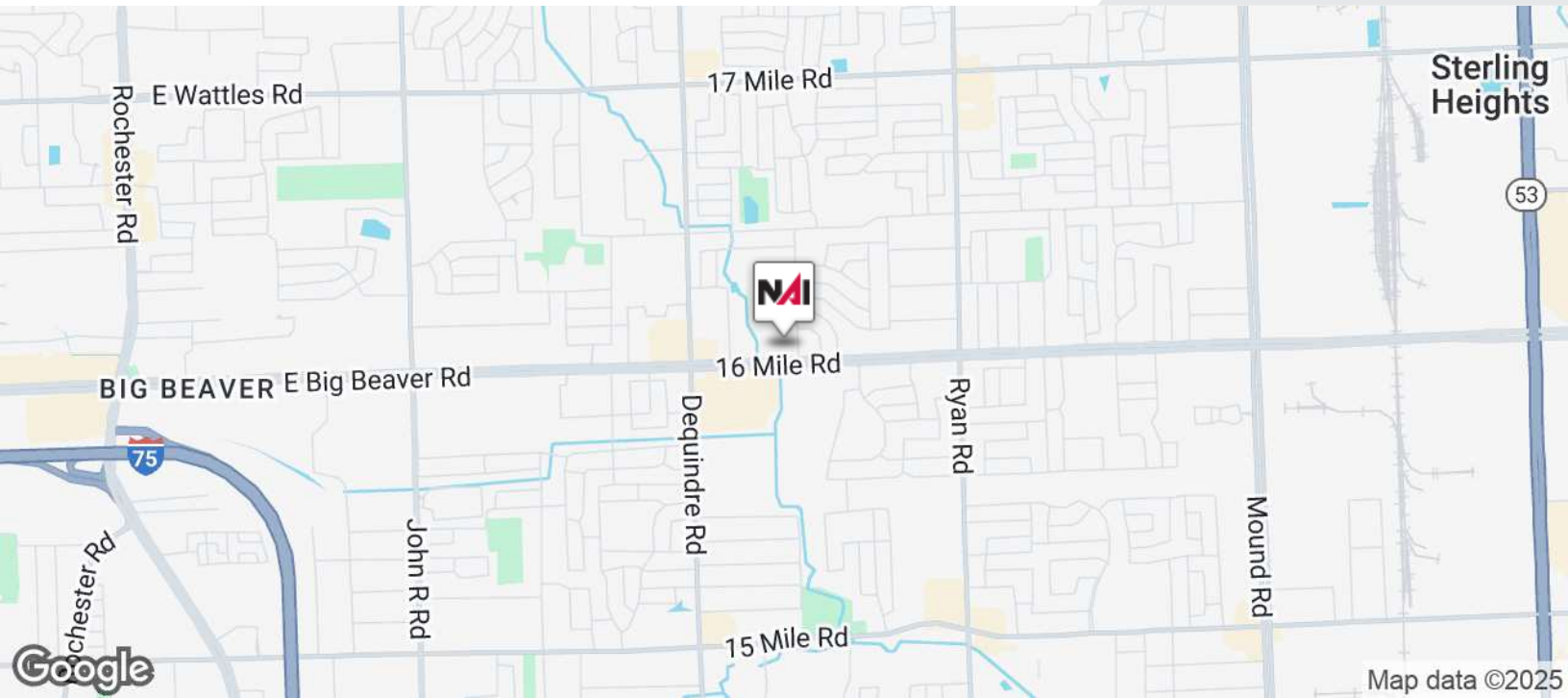
Leasing and Sales Associate | 248.563.0739
acho@farbman.com

NO WARRANTY, EXPRESS OR IMPLIED, IS MADE AS TO THE ACCURACY OF THE INFORMATION CONTAINED HEREIN. THIS INFORMATION IS SUBMITTED SUBJECT TO ERRORS, OMISSIONS, CHANGE OF PRICE, RENTAL OR OTHER CONDITIONS, WITHDRAWAL WITHOUT NOTICE, AND IS SUBJECT TO ANY SPECIAL LISTING CONDITIONS IMPOSED BY OUR PRINCIPALS, COOPERATING BROKERS, BUYERS, TENANTS AND OTHER PARTIES WHO RECEIVE THIS DOCUMENT SHOULD NOT RELY ON IT, BUT SHOULD USE IT AS A STARTING POINT OF ANALYSIS, AND SHOULD INDEPENDENTLY CONFIRM THE ACCURACY OF THE INFORMATION CONTAINED HEREIN THROUGH A DUE DILIGENCE REVIEW OF THE BOOKS, RECORDS, FILES AND DOCUMENTS THAT CONSTITUTE RELIABLE SOURCES OF THE INFORMATION DESCRIBED HEREIN. LOGOS ARE FOR IDENTIFICATION PURPOSES ONLY AND MAY BE TRADEMARKS OF THEIR RESPECTIVE COMPANIES. NAI Farbman, INC. CA BRE LIC. #01990696.

2,500 SF OFFICE / MEDICAL



FOR LEASE



Commercial Real Estate Services, Worldwide.

www.naifarbman.com

Wendy Acho

Leasing and Sales Associate | 248.563.0739

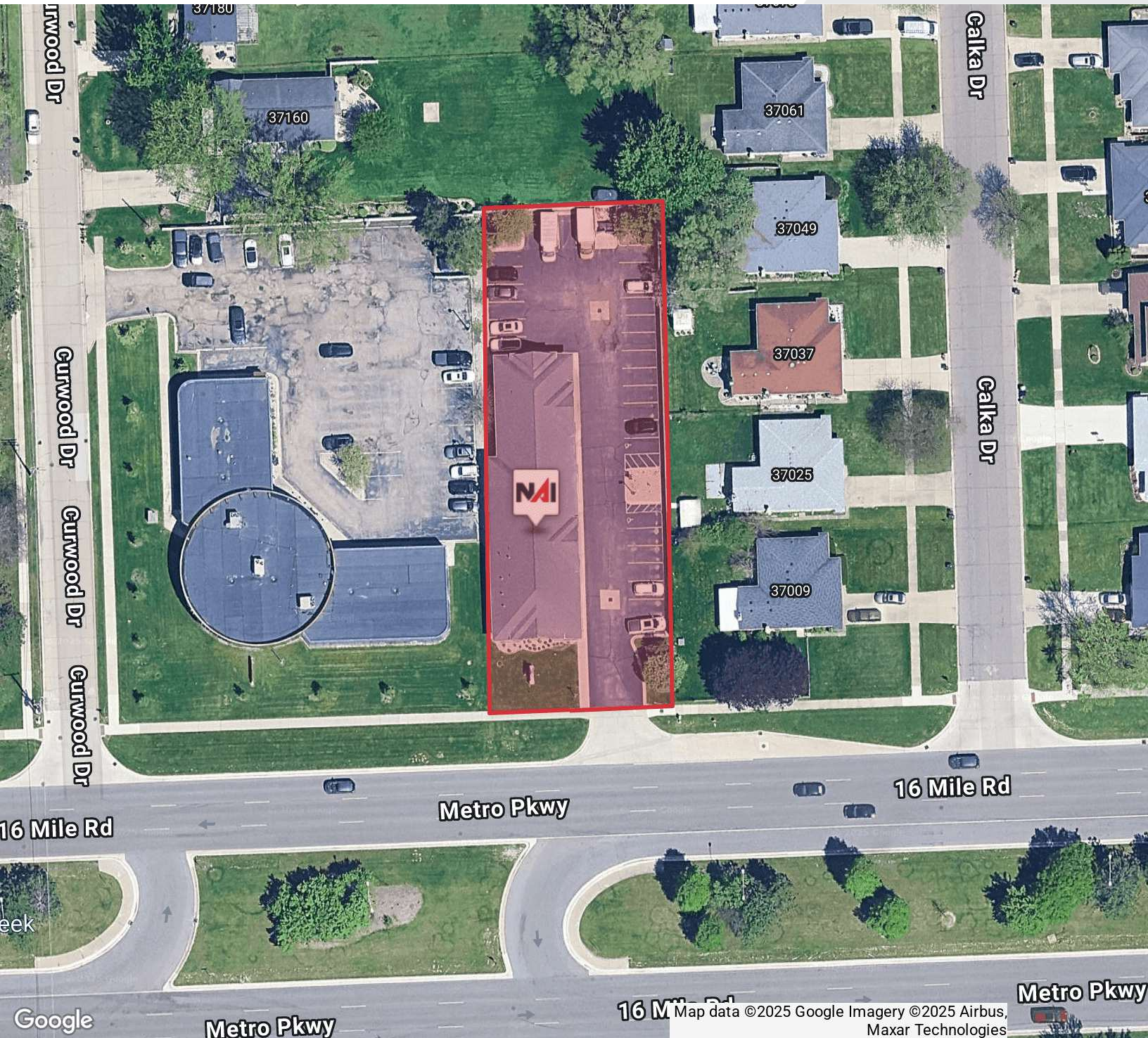
acho@farbman.com

NO WARRANTY, EXPRESS OR IMPLIED, IS MADE AS TO THE ACCURACY OF THE INFORMATION CONTAINED HEREIN. THIS INFORMATION IS SUBMITTED SUBJECT TO ERRORS, OMISSIONS, CHANGE OF PRICE, RENTAL OR OTHER CONDITIONS, WITHDRAWAL WITHOUT NOTICE, AND IS SUBJECT TO ANY SPECIAL LISTING CONDITIONS IMPOSED BY OUR PRINCIPALS. COOPERATING BROKERS, BUYERS, TENANTS AND OTHER PARTIES WHO RECEIVE THIS DOCUMENT SHOULD NOT RELY ON IT, BUT SHOULD USE IT AS A STARTING POINT OF ANALYSIS, AND SHOULD INDEPENDENTLY CONFIRM THE ACCURACY OF THE INFORMATION CONTAINED HEREIN THROUGH A DUE DILIGENCE REVIEW OF THE BOOKS, RECORDS, FILES AND DOCUMENTS THAT CONSTITUTE RELIABLE SOURCES OF THE INFORMATION DESCRIBED HEREIN. LOGOS ARE FOR IDENTIFICATION PURPOSES ONLY AND MAY BE TRADEMARKS OF THEIR RESPECTIVE COMPANIES. NAI Farbman, INC. CA BRE LIC. #01990696.

2,500 SF OFFICE / MEDICAL



FOR LEASE



Commercial Real Estate Services. Worldwide.
www.naifarbman.com

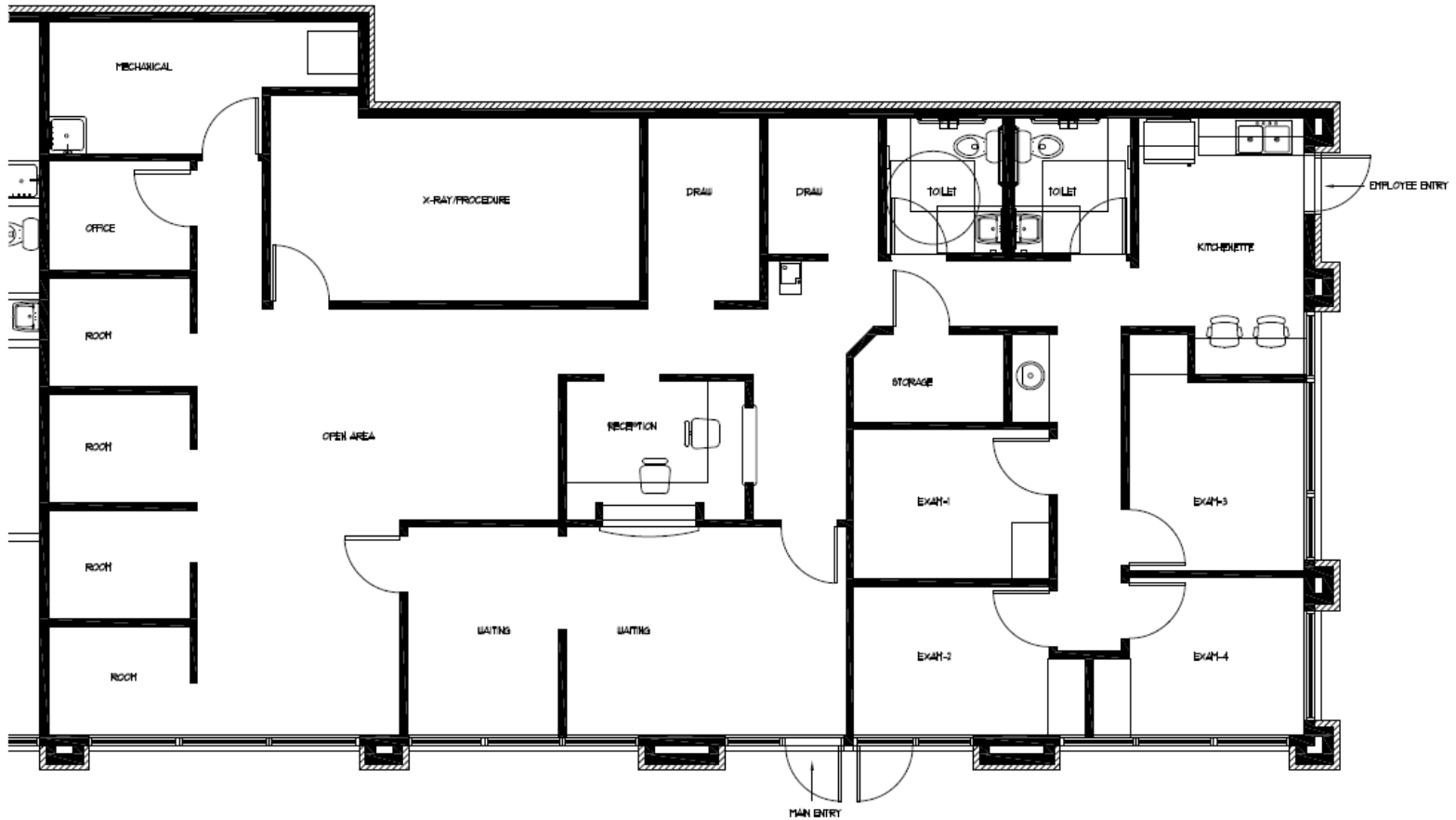
Wendy Acho
Leasing and Sales Associate | 248.563.0739
acho@farbman.com

NO WARRANTY, EXPRESS OR IMPLIED, IS MADE AS TO THE ACCURACY OF THE INFORMATION CONTAINED HEREIN. THIS INFORMATION IS SUBMITTED SUBJECT TO ERRORS, OMISSIONS, CHANGE OF PRICE, RENTAL OR OTHER CONDITIONS, WITHDRAWAL WITHOUT NOTICE, AND IS SUBJECT TO ANY SPECIAL LISTING CONDITIONS IMPOSED BY OUR PRINCIPALS. COOPERATING BROKERS, BUYERS, TENANTS AND OTHER PARTIES WHO RECEIVE THIS DOCUMENT SHOULD NOT RELY ON IT, BUT SHOULD USE IT AS A STARTING POINT OF ANALYSIS, AND SHOULD INDEPENDENTLY CONFIRM THE ACCURACY OF THE INFORMATION CONTAINED HEREIN THROUGH A DUE DILIGENCE REVIEW OF THE BOOKS, RECORDS, FILES AND DOCUMENTS THAT CONSTITUTE RELIABLE SOURCES OF THE INFORMATION DESCRIBED HEREIN. LOGOS ARE FOR IDENTIFICATION PURPOSES ONLY AND MAY BE TRADEMARKS OF THEIR RESPECTIVE COMPANIES. NAI Farbman, INC. CA BRE LIC. #01990696.

2,500 SF OFFICE / MEDICAL



FOR LEASE



SUITE-300
~ 2500 sqft



Commercial Real Estate Services, Worldwide.

www.naifarbman.com

Wendy Acho

Leasing and Sales Associate | 248.563.0739

acho@farbman.com

NO WARRANTY, EXPRESS OR IMPLIED, IS MADE AS TO THE ACCURACY OF THE INFORMATION CONTAINED HEREIN. THIS INFORMATION IS SUBMITTED SUBJECT TO ERRORS, OMISSIONS, CHANGE OF PRICE, RENTAL OR OTHER CONDITIONS, WITHDRAWAL WITHOUT NOTICE, AND IS SUBJECT TO ANY SPECIAL LISTING CONDITIONS IMPOSED BY OUR PRINCIPALS. COOPERATING BROKERS, BUYERS, TENANTS AND OTHER PARTIES WHO RECEIVE THIS DOCUMENT SHOULD NOT RELY ON IT, BUT SHOULD USE IT AS A STARTING POINT OF ANALYSIS, AND SHOULD INDEPENDENTLY CONFIRM THE ACCURACY OF THE INFORMATION CONTAINED HEREIN THROUGH A DUE DILIGENCE REVIEW OF THE BOOKS, RECORDS, FILES AND DOCUMENTS THAT CONSTITUTE RELIABLE SOURCES OF THE INFORMATION DESCRIBED HEREIN. LOGOS ARE FOR IDENTIFICATION PURPOSES ONLY AND MAY BE TRADEMARKS OF THEIR RESPECTIVE COMPANIES. NAI Farbman, INC. CA BRE LIC. #01990696.