

LAND AVAILABLE FOR DEVELOPMENT

2100 William Few Parkway | Grovetown, GA 30813

\$475,000

APN | 050 010A

2.50 AC

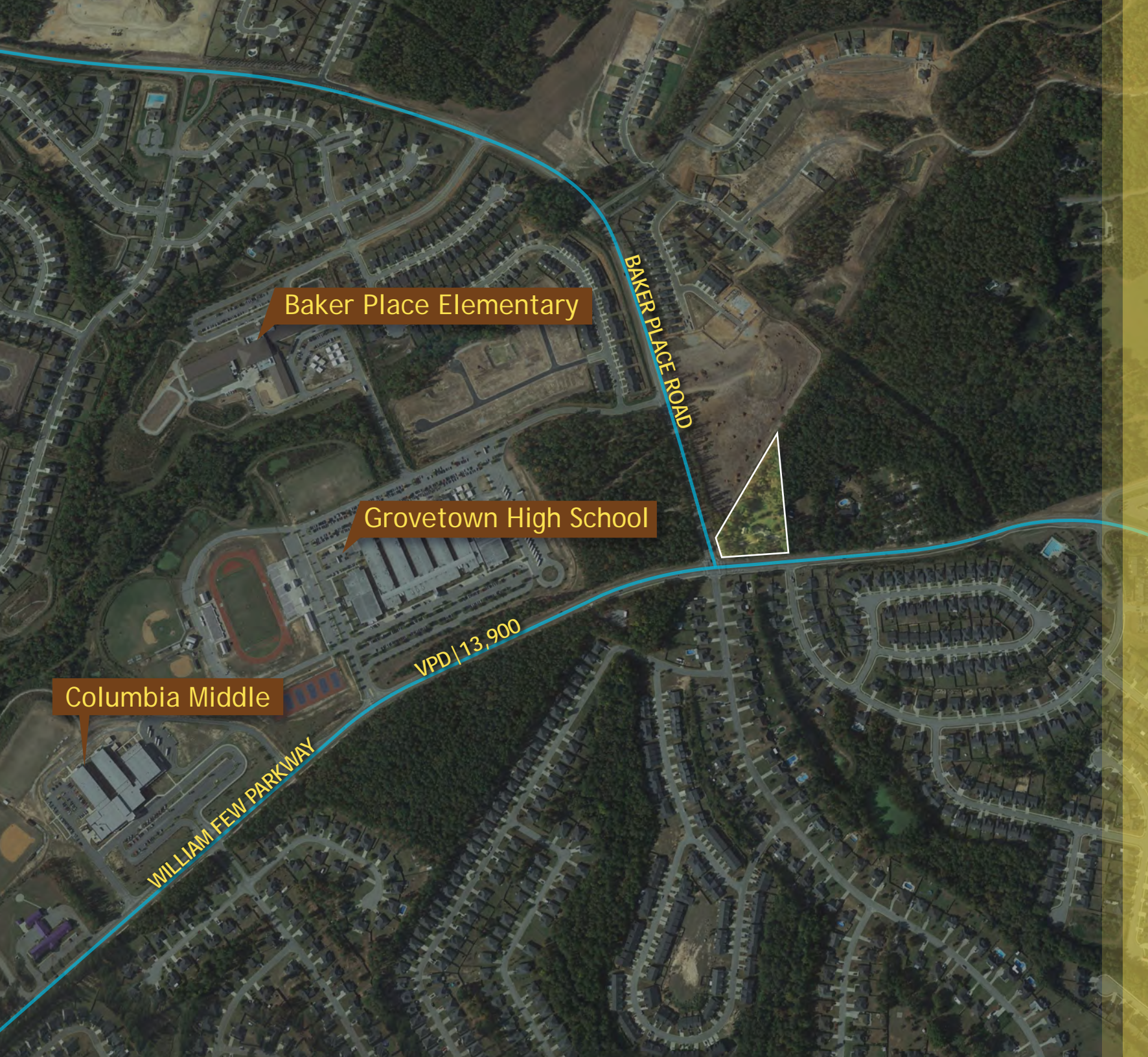
WIL KACOS

wil@jordantrotter.com
706•736•1031



JORDAN TROTTER
COMMERCIAL REAL ESTATE





Highlights

This property is nearly 2.5 acres at the corner of William Few Parkway and Baker Place Road in growing Grovetown. The parcel has great commercial potential and is in proximity to several Columbia County Schools including Baker Place Elementary, Grovetown High School, and Columbia Middle.

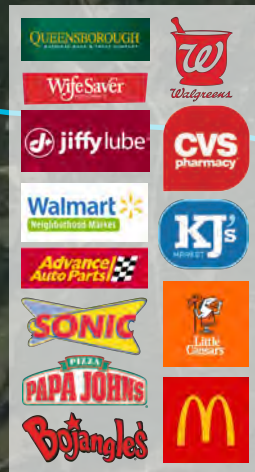
- William Few Parkway VPD: 8,916
- A great location for office, convenient store, or other retail



JORDAN TROTTER
COMMERCIAL REAL ESTATE

JSITE

COLUMBIA ROAD
WILLIAM FEW PARKWAY
LEWISTON ROAD



WRIGHTSBORO ROAD

CHAMPLIN ROAD

HARLEM GROVETOWN ROAD

WRIGHTSBORO ROAD

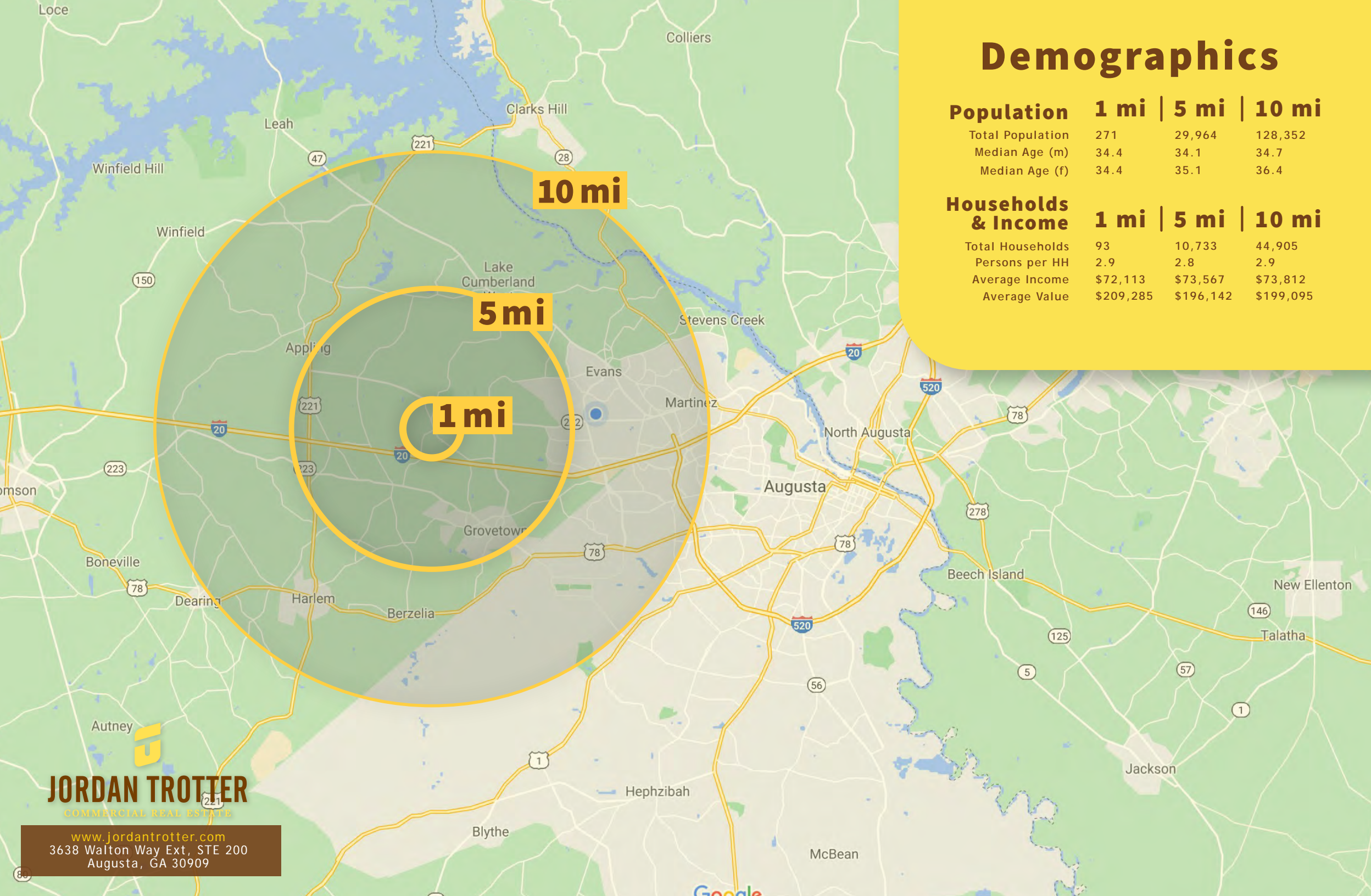


JORDAN TROTTER
COMMERCIAL REAL ESTATE

Demographics

Population	1 mi	5 mi	10 mi
Total Population	271	29,964	128,352
Median Age (m)	34.4	34.1	34.7
Median Age (f)	34.4	35.1	36.4

Households & Income	1 mi	5 mi	10 mi
Total Households	93	10,733	44,905
Persons per HH	2.9	2.8	2.9
Average Income	\$72,113	\$73,567	\$73,812
Average Value	\$209,285	\$196,142	\$199,095



JORDAN TROTTER
COMMERCIAL REAL ESTATE

www.jordantrotter.com
3638 Walton Way Ext, STE 200
Augusta, GA 30909