



**Keegan & Coppin**  
COMPANY, INC.

FOR LEASE

**5355 SKYLANE BLVD.  
SANTA ROSA, CA**

**10,000 SQ. FT. DISTRIBUTION  
SPACE WITH OUTDOOR  
STORAGE**

Go beyond broker.

PRESENTED BY:

**ANNETTE COOPER**  
**SENIOR REAL ESTATE ADVISOR**  
LIC # 00826250 (707) 528-1400, EXT. 257  
[ACOOPER@KEEGANCOPPIN.COM](mailto:ACOOPER@KEEGANCOPPIN.COM)





**Keegan & Coppin**  
COMPANY, INC.



5355 SKYLANE BLVD.  
SANTA ROSA, CA

**DISTRIBUTION  
SPACE FOR  
LEASE**

## PROPERTY SUMMARY

### PROPERTY HIGHLIGHTS

- 9,979+/- SF; 1.73 Acres
- MP 1 Zoning
- Outdoor storage area in the Business Park
- Former cannabis distribution use
- Available 1/31/26
- Conveniently located near Highway 101 and the Sonoma County Airport

**Potential opportunity to purchase the entire building. Call Listing Agent!**

### PROPERTY INFORMATION

#### Lease Rate

\$.95 per sq ft Gross

#### Lease Term

Negotiable

#### Parking

39 On-Site Parking Spaces

#### Zoning

BP - Business Park



#### PRESENTED BY:

**ANNETTE COOPER, SREA**  
**KEEGAN & COPPIN CO., INC.**  
**LIC # 00826250 (707) 528-1400, EXT. 257**  
**ACOOPER@KEEGANCOPPIN.COM**

The above information, while not guaranteed, has been secured from sources we believe to be reliable. Submitted subject to error, change or withdrawal. An interested party should verify the status of the property and the information herein.



**Keegan & Coppin**  
COMPANY, INC.



5355 SKYLANE BLVD.  
SANTA ROSA, CA

**DISTRIBUTION  
SPACE FOR  
LEASE**

## AREA DESCRIPTION

### DESCRIPTION OF AREA

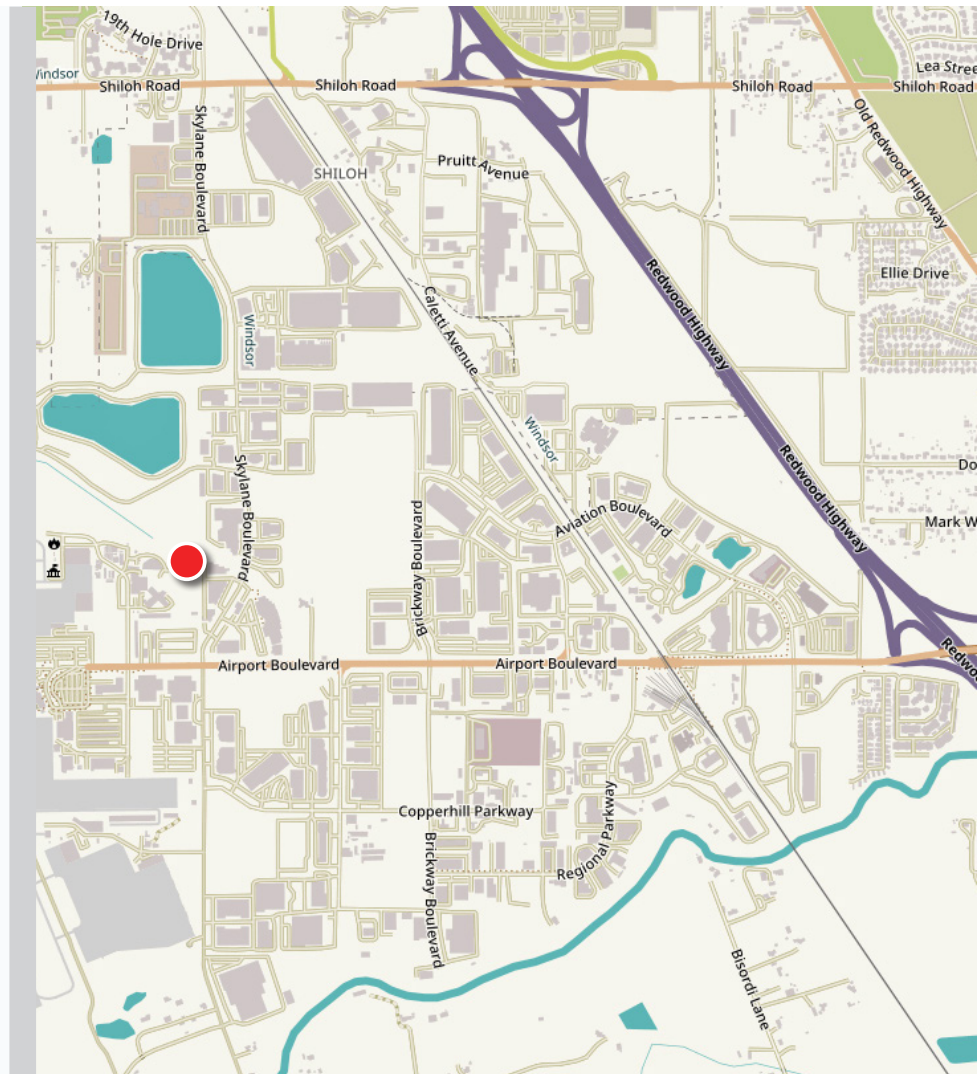
Premiere business park in Airport District of Santa Rosa.

### NEARBY AMENITIES

- Restaurants
- Golf
- Health Club
- Cinema

### TRANSPORTATION ACCESS

- Sonoma County Airport
- Easy access to Highway 101



### PRESENTED BY:

**ANNETTE COOPER, SREA**  
**KEEGAN & COPPIN CO., INC.**  
LIC # 00826250 (707) 528-1400, EXT. 257  
ACOOOPER@KEEGANCOPPIN.COM

The above information, while not guaranteed, has been secured from sources we believe to be reliable. Submitted subject to error, change or withdrawal. An interested party should verify the status of the property and the information herein.





**Keegan & Coppin**  
COMPANY, INC.

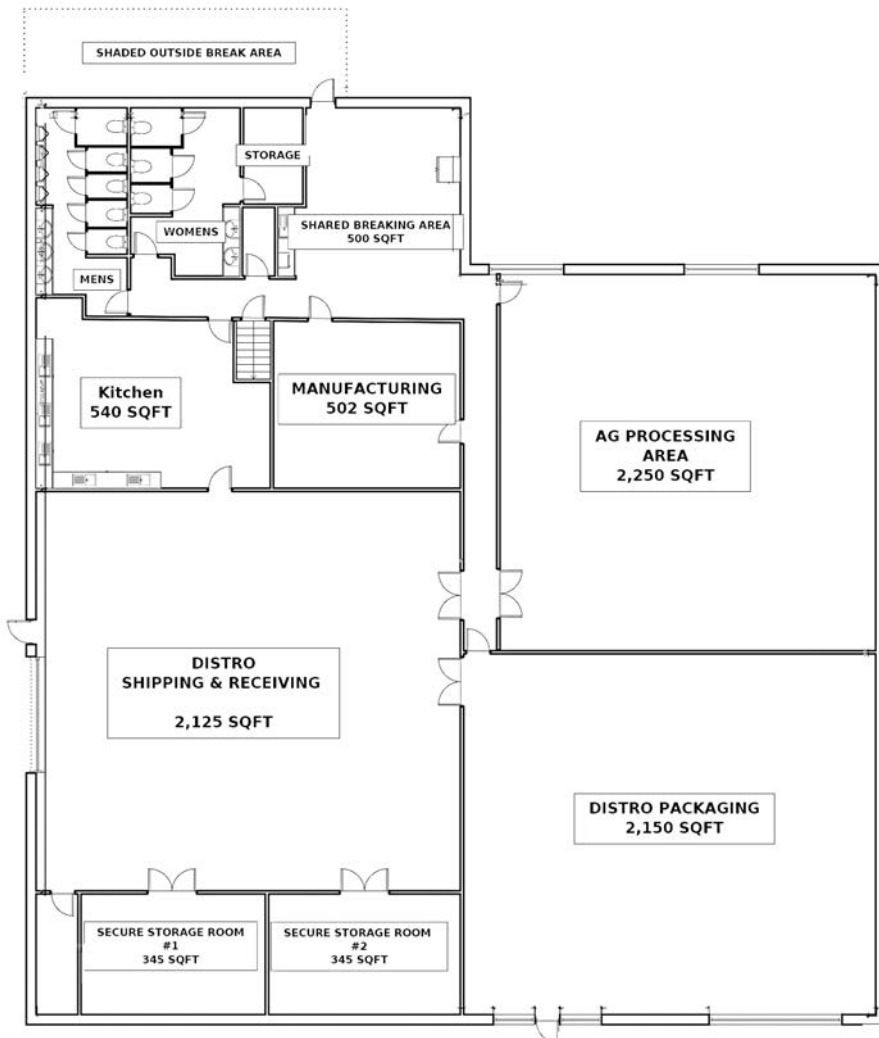


5355 SKYLANE BLVD.  
SANTA ROSA, CA

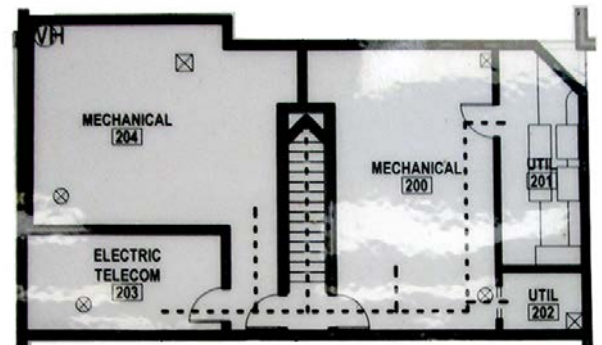
**DISTRIBUTION  
SPACE FOR  
LEASE**

## FLOOR PLAN

### FIRST FLOOR



### SECOND FLOOR



#### PRESENTED BY:

**ANNETTE COOPER, SREA**  
**KEEGAN & COPPIN CO., INC.**  
LIC # 00826250 (707) 528-1400, EXT. 257  
ACOOOPER@KEEGANCOPPIN.COM

The above information, while not guaranteed, has been secured from sources we believe to be reliable. Submitted subject to error, change or withdrawal. An interested party should verify the status of the property and the information herein.





**Keegan & Coppin**  
COMPANY, INC.



5355 SKYLANE BLVD.  
SANTA ROSA, CA

**DISTRIBUTION  
SPACE FOR  
LEASE**

## PROPERTY PHOTOS



**PRESENTED BY:**

**ANNETTE COOPER, SREA**  
**KEEGAN & COPPIN CO., INC.**  
**LIC # 00826250 (707) 528-1400, EXT. 257**  
**ACOOPER@KEEGANCOPPIN.COM**

The above information, while not guaranteed, has been secured from sources we believe to be reliable. Submitted subject to error, change or withdrawal. An interested party should verify the status of the property and the information herein.





**Keegan & Coppin**  
COMPANY, INC.



5355 SKYLANE BLVD.  
SANTA ROSA, CA

**DISTRIBUTION  
SPACE FOR  
LEASE**

## PROPERTY PHOTOS



**PRESENTED BY:**

**ANNETTE COOPER, SREA**  
**KEEGAN & COPPIN CO., INC.**  
**LIC # 00826250 (707) 528-1400, EXT. 257**  
**ACOOOPER@KEEGANCOPPIN.COM**

The above information, while not guaranteed, has been secured from sources we believe to be reliable. Submitted subject to error, change or withdrawal. An interested party should verify the status of the property and the information herein.





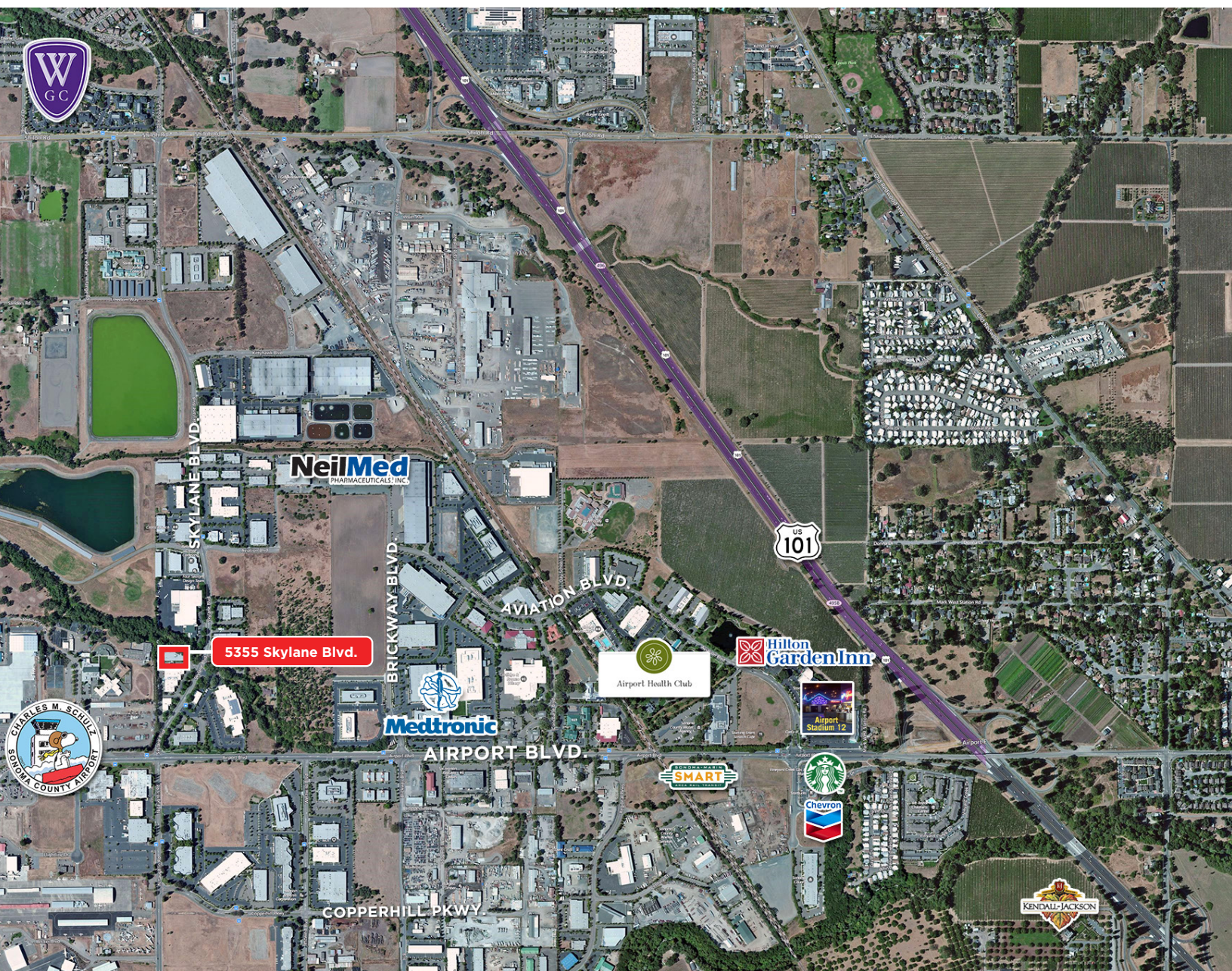
**Keegan & Coppin**  
COMPANY, INC.



5355 SKYLANE BLVD.  
SANTA ROSA, CA

**DISTRIBUTION  
SPACE FOR  
LEASE**

## VICINITY MAP



Keegan & Coppin Co., Inc.  
1355 N Dutton Ave.  
Santa Rosa, CA 95401  
[www.keegancoppin.com](http://www.keegancoppin.com)  
(707) 528-1400

The above information, while not guaranteed, has been secured from sources we believe to be reliable. Submitted subject to error, change or withdrawal. An interested party should verify the status of the property and the information herein.

PRESENTED BY:

**ANNETTE COOPER, SREA**  
LIC # 00826250 (707) 528-1400, EXT. 257  
[ACOOPER@KEEGANCOPPIN.COM](mailto:ACOOPER@KEEGANCOPPIN.COM)