

**FOR SALE & LEASE**

Owned and Operated by  **LINK**

# WILLOW BUSINESS PARK

455 W. San Bernardino Avenue, Rialto, CA 92376

**±57,586 SF**



**LEASING INFO  
& CONTACT**

Juan Gutierrez, SIOR

Lic. #01777990

(909) 545-8008 / [jgutierrez@voitco.com](mailto:jgutierrez@voitco.com)

John Viscouny

Lic. #02028915

(909) 545-8002 / [jviscounty@voitco.com](mailto:jviscounty@voitco.com)

**Voit**

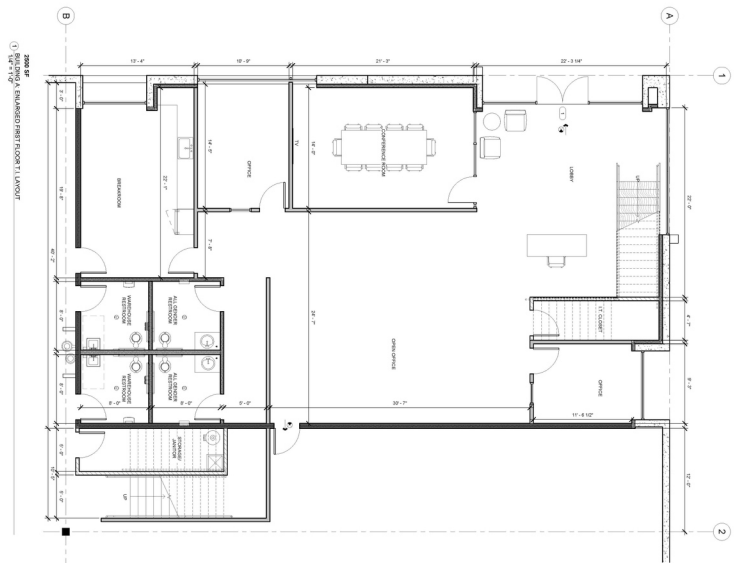
REAL ESTATE SERVICES

## PROPERTY FEATURES

- ±57,586 Square Feet
- 32' Clear Height
- ±5,000 SF Office
- 7 Dock High Doors (3 doors w/ 35,000 lbs pit levelers)
- 2 Ground Level Doors
- ESFR Sprinkler System
- 2,000 UGPS with 800 amp service
- LED Warehouse Lights
- 52'x60' Column Spacing



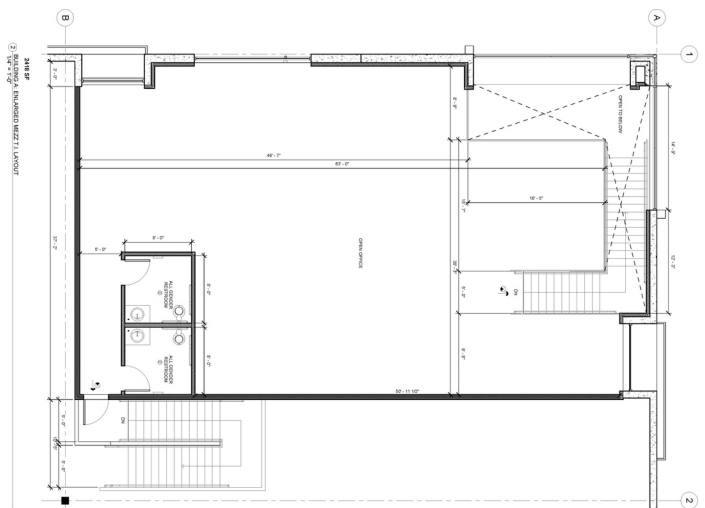
SITE PLAN



FIRST FLOOR OFFICE PLAN

## LOCATION DETAILS

- 13.7 Miles to Ontario International Airport
- 76 Miles to Port of Long Beach & Port of Los Angeles
- 70.1 to Los Angeles International Airport
- 104 Miles to San Diego



MEZZANINE OFFICE FLOOR PLAN

