



# PROFESSIONAL MEDICAL OFFICE FOR LEASE

1040 MORNINGSID DRIVE, PERRY, GA 31069

LEASE RATE: \$18/SF, NNN



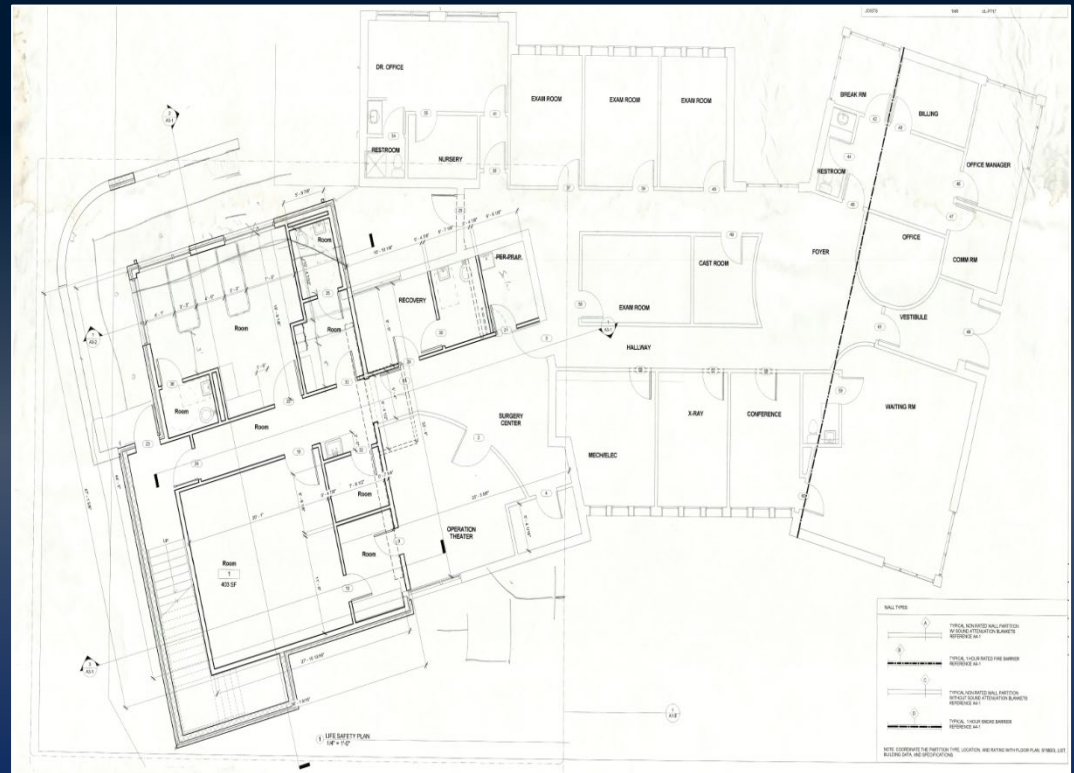
**PAYTON HORTON C: 478.733.7132**  
**[PHORTON@THESUMMITGROUPMACON.COM](mailto:PHORTON@THESUMMITGROUPMACON.COM)**  
**1120 BALL STREET, PERRY, GA 31069**  
**O: 478.313.5213**  
**[WWW.THESUMMITGROUPMACON.COM](http://WWW.THESUMMITGROUPMACON.COM)**





## PROPERTY INFORMATION

- +/- 6,424 SF of Medical Office Space situated on 1.01 acre
- Built in 2003
- Four (4) Exam Rooms, Two (2) Offices, Five (5) Restrooms, Two (2) Surgical Suites, One (1) Lab, and Storage Room
- Twenty-five (25) parking spaces including two (2) Handi-Cap spaces
- Certified by the Department of Human Resources as an Ambulatory Surgical Center
- Medicare approved for surgical specialty
- Virtual Tour:  
<https://kuula.co/share/collection/7DR3Y?logo=1&info=0&logosize=68&fs=1&vr=1&sd=1&initload=0&thumbs=1>



1040 MORNINGSID DRIVE  
PERRY, GA 31069  
HOUSTON COUNTY



AERIAL

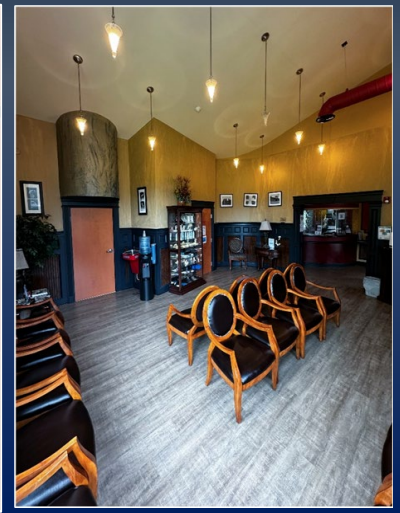
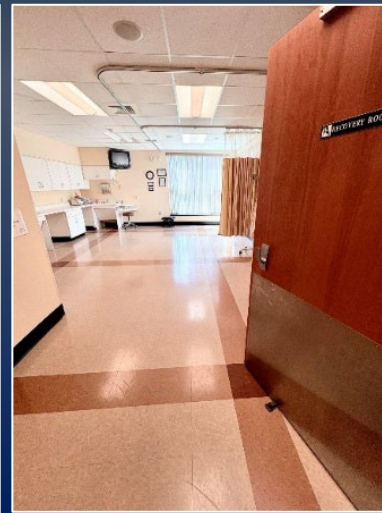
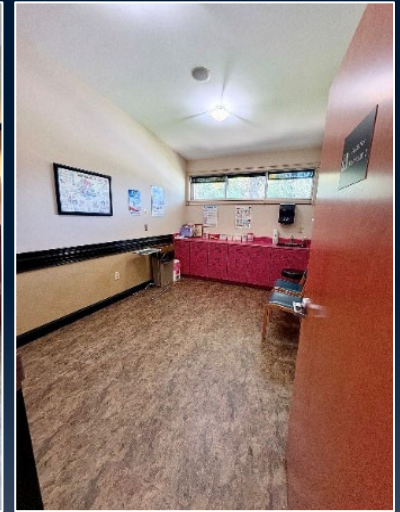


1040 MORNINGSIDE DRIVE  
PERRY, GA 31069  
HOUSTON COUNTY





## ADDITIONAL PHOTOS



*The information contained herein has been compiled from various sources, both private and public. It is accurate and complete only to the extent to which The Summit Group has been able to ascertain from third party sources. As such, no warranty or guarantee is given or implied with regard to the accuracy or completeness of any information contained herein. Any interested party shall be required to conduct its own due diligence and investigations to verify, review, audit, or otherwise insure the information contained herein.*