



## 388 Larkspur St

388 Larkspur St, Ponderay, ID 83852



**Nicole Heikkila**

Prodigy Property Management  
12402 N Division St, Suite 329, Spokane, WA 99218  
[nheikkila@prodigypro.net](mailto:nheikkila@prodigypro.net)  
(208) 920-1072



## 388 Larkspur St

\$13.92 /SF/YR

Exciting Opportunity: Commercial Space for Rent in Ponderay!

Ready to elevate your business? Check out this prime commercial space available for lease in bustling Ponderay, Idaho!

Now renting for \$1400 a month!

Property Highlights:

Generous Square Footage  
Prime Location with High Visibility  
Modern Layout with Flexible Usage Options  
Ample Parking Space  
Nearby Amenities & Growing Community  
Whether you're starting a new venture or expanding an existing one, this space offers endless possibilities. Don't miss out on your chance to be part of Ponderay's vibrant business scene!

Contact us today at 208.646.9395 to schedule a viewing and secure your spot....



Rental Rate: \$13.92 /SF/YR

Property Type: [object Object]

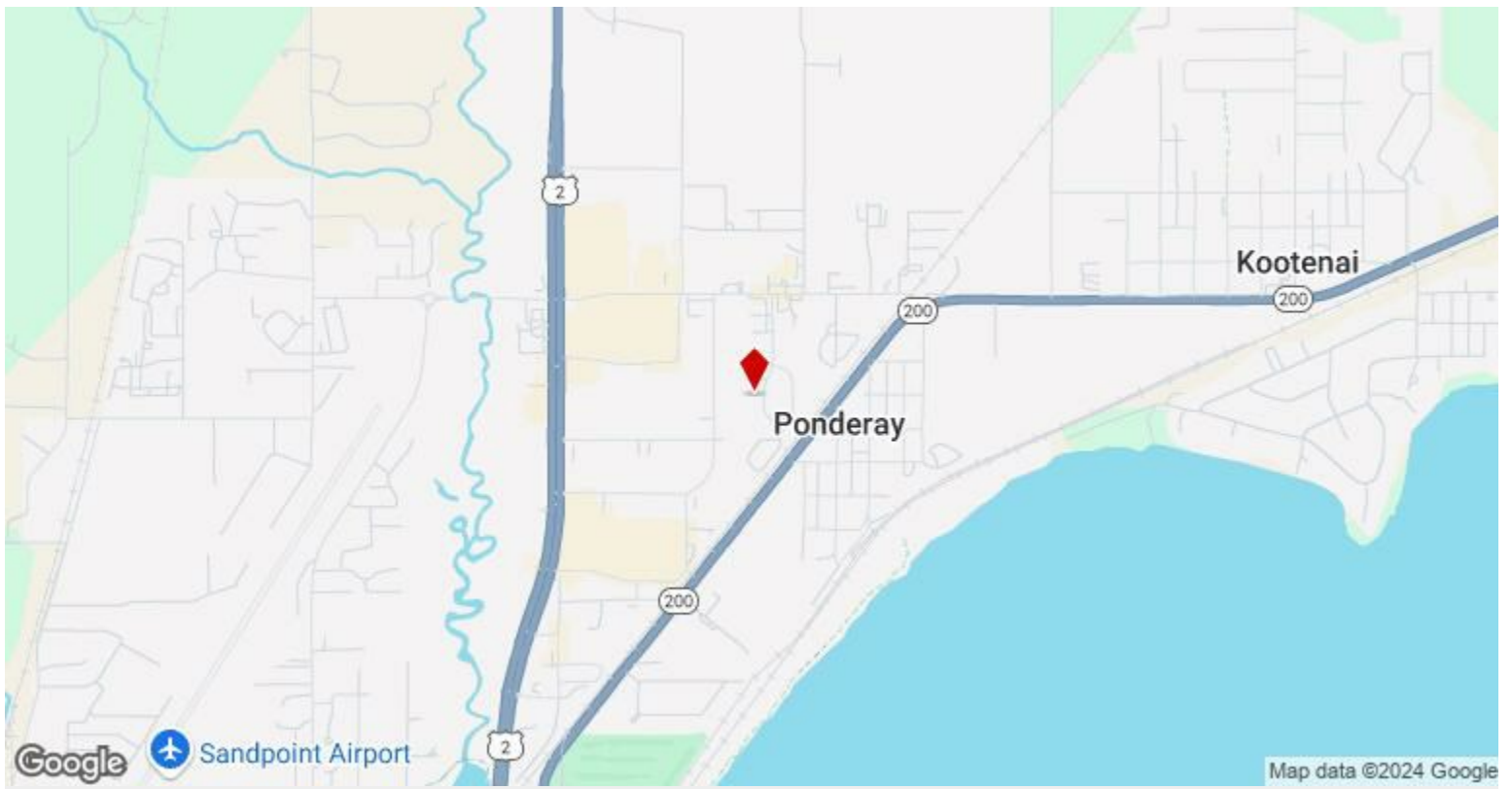
Year Built: 2021

Rental Rate Mo: \$1.16 /SF/MO

## 1st Floor

Space Available	1,200 SF
Rental Rate	\$13.92 /SF/YR
Date Available	Now
Service Type	Negotiable
Space Type	Relet
Space Use	Industrial
Lease Term	3 - 5 Years

**Exciting Opportunity: Commercial Space for Rent in Ponderay!** Ready to elevate your business? Check out this prime commercial space available for lease in bustling Ponderay, Idaho! Now renting for \$1400 a month! **Property Highlights:** Generous Square Footage Prime Location with High Visibility Modern Layout with Flexible Usage Options Ample Parking Space Nearby Amenities & Growing Community Whether you're starting a new venture or expanding an existing one, this space offers endless possibilities. Don't miss out on your chance to be part of Ponderay's vibrant business scene! Contact us today at 208.646.9395 to schedule a viewing and secure your spot.



## 388 Larkspur St, Ponderay, ID 83852

Exciting Opportunity: Commercial Space for Rent in Ponderay!

Ready to elevate your business? Check out this prime commercial space available for lease in bustling Ponderay, Idaho!

Now renting for \$1400 a month!

Property Highlights:

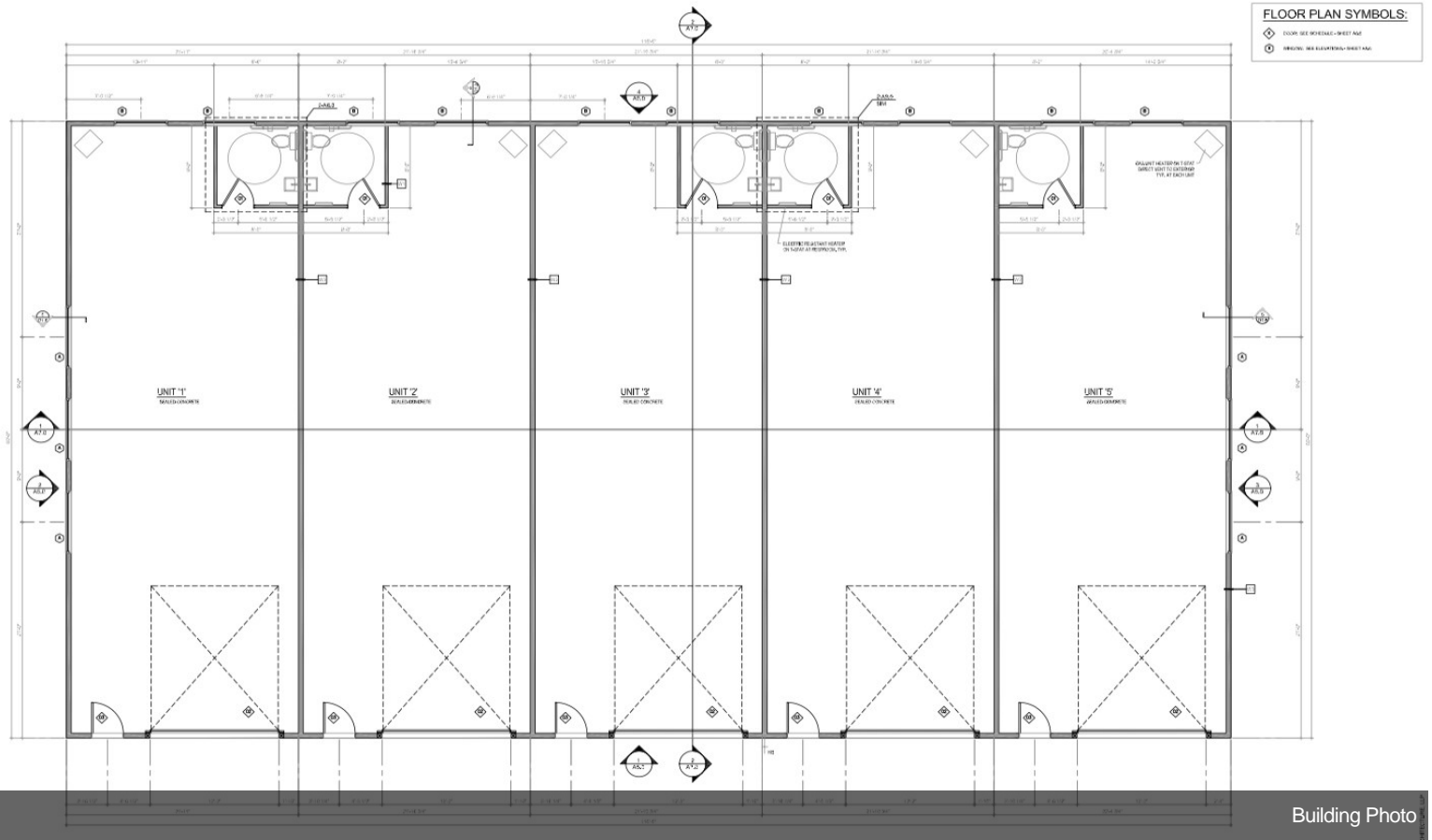
- Generous Square Footage
- Prime Location with High Visibility
- Modern Layout with Flexible Usage Options
- Ample Parking Space
- Nearby Amenities & Growing Community

Whether you're starting a new venture or expanding an existing one, this space offers endless possibilities. Don't miss out on your chance to be part of Ponderay's vibrant business scene!

Contact us today at 208.646.9395 to schedule a viewing and secure your spot.



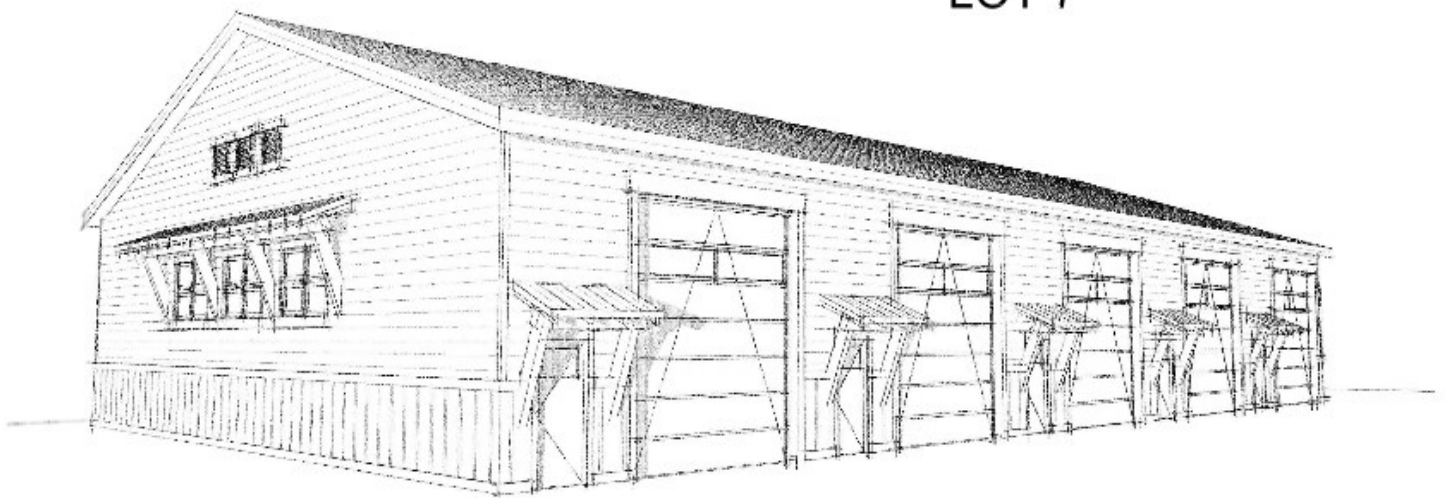
# Property Photos



# ALDER CREEK

## COMMERCIAL PONDERAY, ID 83864

LOT 7



Building Photo

# Property Photos



Building Photo