

LOT 6 - ASPEN RIDGE MULTI TENANT RETAIL BUILDING

Reasor's

BLDG 2

1810-1822 W Norfolk Dr, Broken Arrow, OK

Property Description

Aspen Ridge of Broken Arrow is a regional grocery-anchored shopping center located in Broken Arrow, Oklahoma. The 60-acre mixed-use development will feature 150,000 square feet of retail shopping, restaurant, grocery, entertainment, and 170 residential apartments. The project is located immediate north of the Creek Turnpike and 145th East Ave. (Aspen) in south Broken Arrow. The center is anchored by 60,000 SF Reasor's grocery store that opened August 2024. Joining Reasor's at Aspen Ridge include Kim & Go, Chick-Fil-A, Chipotle, Panda Express, Whataburger, Taco Bell, AT&T, Sport Clips and Freedom Carwash. Coming Soon: Freddy's, Picklemans and HTeaO. Other Area tenants include Walmart Super Center, Regal Theater, CVS Pharmacy and Starbucks.

Spaces

Lease Rate

Space Size

1822 W NORFOLK DR	\$37.00 - 41.00 SF/yr	1,657 SF
1818 W NORFOLK DR	\$37.00 - 41.00 SF/yr	1,609 SF
1814 W NORFOLK DR	\$37.00 - 41.00 SF/yr	1,609 SF
1810 W NORFOLK DR	\$37.00 - 41.00 SF/yr	1,642 SF

Ben Ganzkow, CCIM

PRINCIPAL

918.946.5855

ben@legacycpadvisors.com

Jonathan Cowan, MBA, CCIM

PRINCIPAL

918.728.9672

jonathan@legacycpadvisors.com

Sam Mitchell, CCIM

ASSOCIATE

817.565.9601

sam@legacycpadvisors.com

VIDEO

Property Highlights

- Now available, delivered January 31, 2025
- Lot 6 (bldg 2) - Grocery anchored multi-tenant retail building up to ±6,500 SF, Min divisible ±1,609 SF
- End cap Drive thru available up to ±2,500 SF
- 65 ft bay depth
- West Norfolk Drive access and direct access from Reasor's site
- Reasor's (grocery) now open
- New 170 Unit Class A Multi-family development - March 2025 construction kick-off
- Easy access to the Creek Turnpike (37,309 VPD)
- Other area retailers include Walmart Supercenter, CVS Pharmacy, and Starbucks.
- Controlled traffic signal on Aspen (E 145th St) - 10,400 VPD

LOT 6 - ASPEN RIDGE MULTI TENANT RETAIL BUILDING



Ben Ganzkow, CCIM

PRINCIPAL

918.946.5855

ben@legacypadvisors.com

Jonathan Cowan, MBA, CCIM

PRINCIPAL

918.728.9672

jonathan@legacypadvisors.com

Sam Mitchell, CCIM

ASSOCIATE

817.565.9601

sam@legacypadvisors.com



LOT 6 - ASPEN RIDGE MULTI TENANT RETAIL BUILDING

S Aspen Ave (145th E Ave) - 10,400 VPD



Lot 5 & 6

Creek Turnpike - 37,309 VPD

E 121st St S- 7,200 VPD



S Elm Pl (161st E Ave) - 20,800 VPD



Ben Ganzkow, CCIM

PRINCIPAL

918.946.5855

ben@legacypadvisors.com

Jonathan Cowan, MBA, CCIM

PRINCIPAL

918.728.9672

jonathan@legacypadvisors.com

Sam Mitchell, CCIM

ASSOCIATE

817.565.9601

sam@legacypadvisors.com

LEGACY
COMMERCIAL PROPERTY ADVISORS

LOT 6 - ASPEN RIDGE MULTI TENANT RETAIL BUILDING



Exterior



Exterior - West



Exterior - East

Ben Ganzkow, CCIM

PRINCIPAL

918.946.5855

ben@legacypadvisors.com

Jonathan Cowan, MBA, CCIM

PRINCIPAL

918.728.9672

jonathan@legacypadvisors.com

Sam Mitchell, CCIM

ASSOCIATE

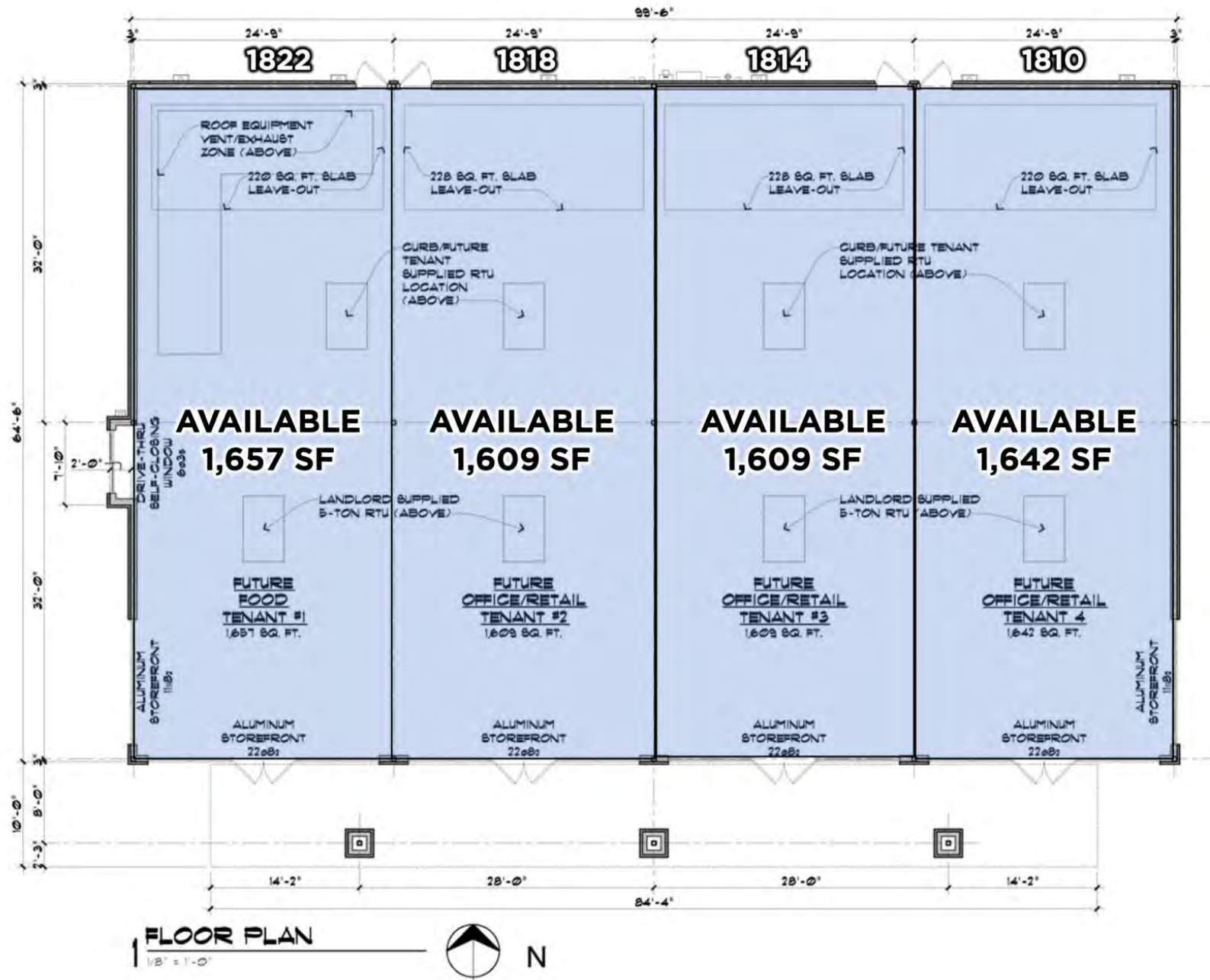
817.565.9601

sam@legacypadvisors.com



©2024 Legacy Commercial Property Advisors. All rights reserved. This information has been obtained from sources believed reliable, but has not been verified for accuracy or completeness. You should conduct a careful, independent investigation of the property and verify all information. Any reliance on this information is solely at your own risk. Photos herein are the property of their respective owners. Use of these images without the express written consent of the owner are prohibited.

LOT 6 - ASPEN RIDGE MULTI TENANT RETAIL BUILDING



Ben Ganzkow, CCIM

PRINCIPAL

918.946.5855

ben@legacypadvisors.com

Jonathan Cowan, MBA, CCIM

PRINCIPAL

918.728.9672

jonathan@legacypadvisors.com

Sam Mitchell, CCIM

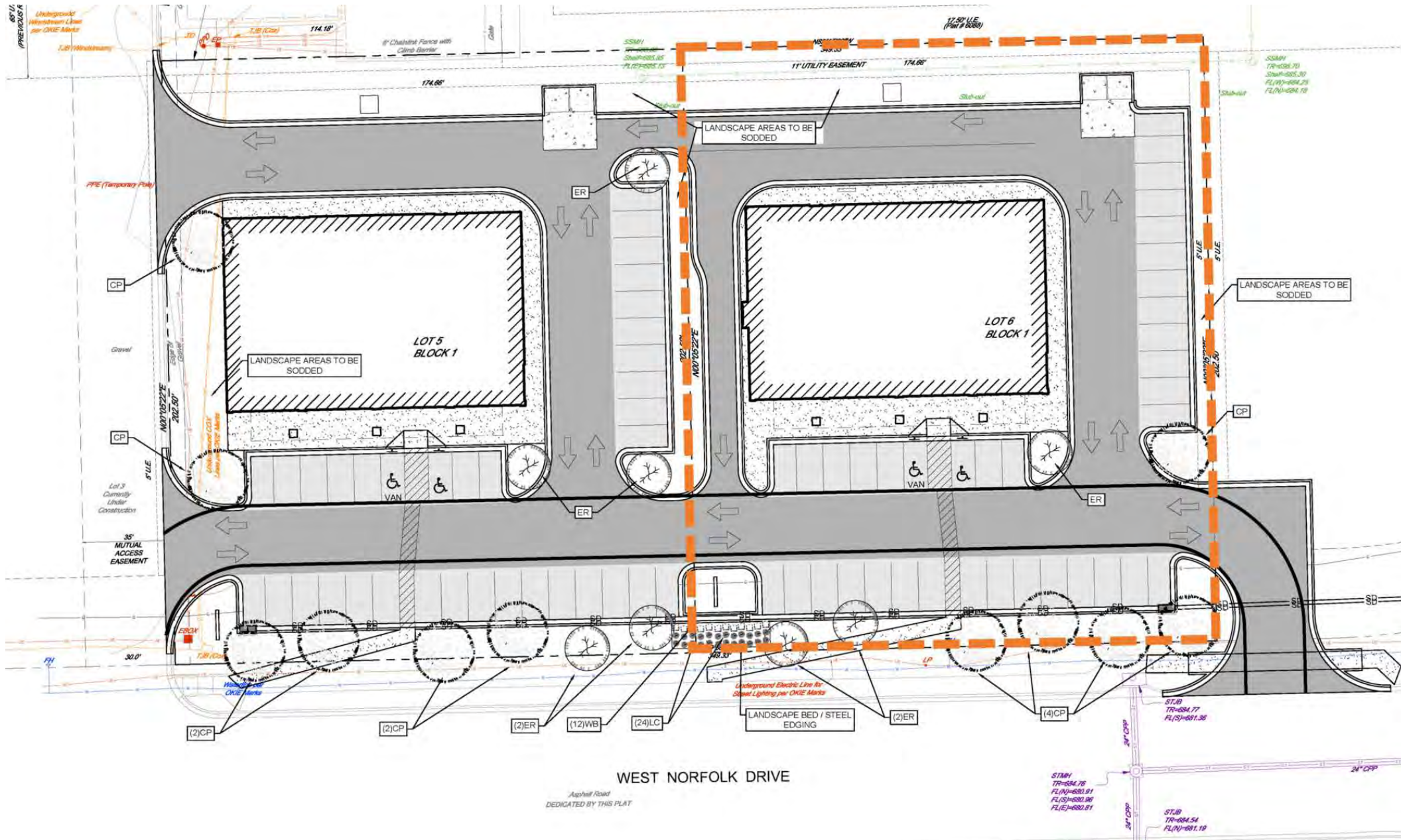
ASSOCIATE

817.565.9601

sam@legacypadvisors.com



LOT 6 - ASPEN RIDGE MULTI TENANT RETAIL BUILDING



Ben Ganzkow, CCIM

PRINCIPAL

918.946.5855

ben@legacypadvisors.com

Jonathan Cowan, MBA, CCIM

PRINCIPAL

918.728.9672

jonathan@legacypadvisors.com

Sam Mitchell, CCIM

ASSOCIATE

817.565.9601

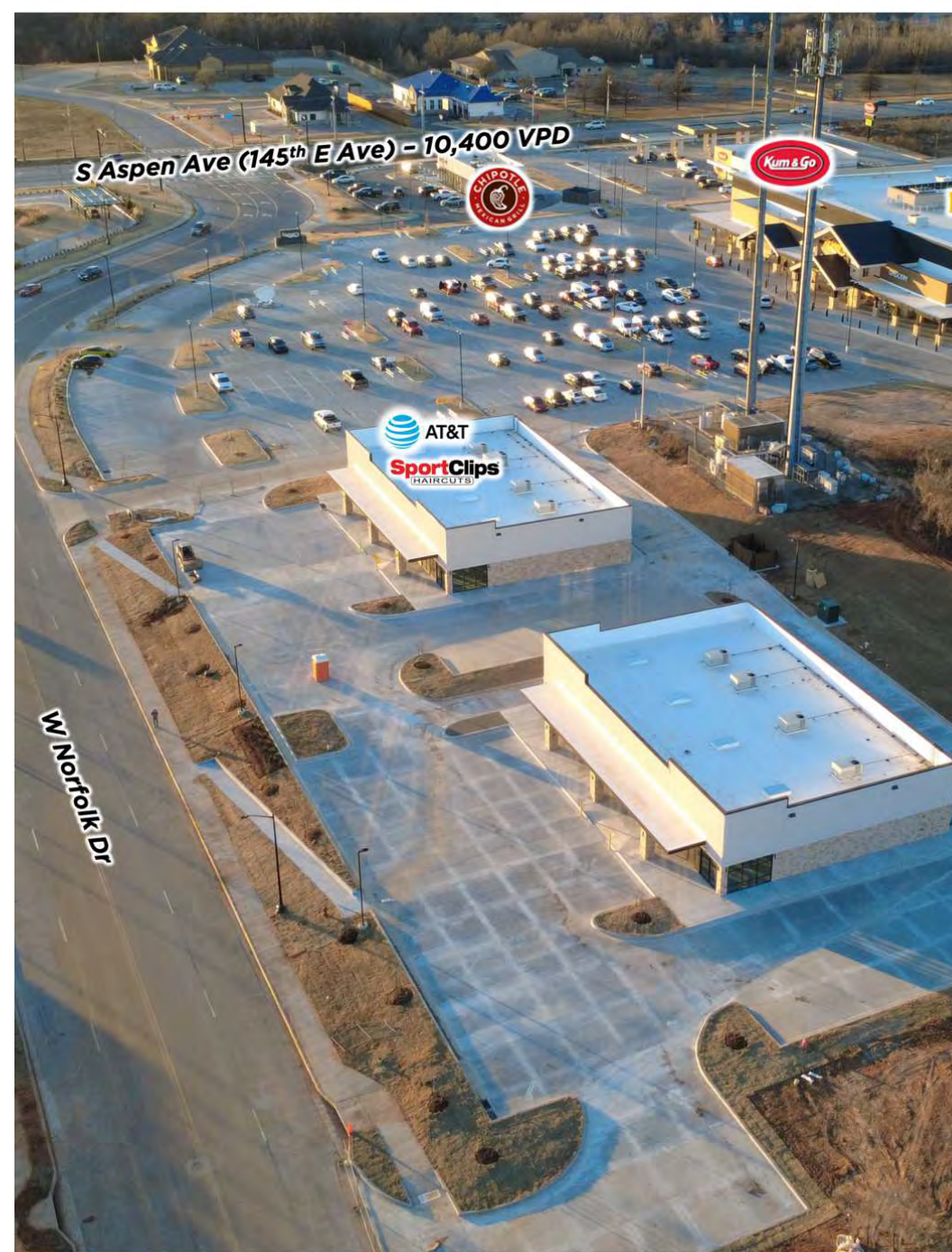
sam@legacypadvisors.com



LOT 6 - ASPEN RIDGE MULTI TENANT RETAIL BUILDING

Population	3 Miles	5 Miles	7 Miles
TOTAL POPULATION	54,634	114,685	224,095
AVERAGE AGE	40	40	40
AVERAGE AGE (MALE)	39	39	38
AVERAGE AGE (FEMALE)	41	41	41
Households & Income	3 Miles	5 Miles	7 Miles
TOTAL HOUSEHOLDS	20,360	42,776	87,124
# OF PERSONS PER HH	2.7	2.7	2.6
AVERAGE HH INCOME	\$107,907	\$112,569	\$111,801
AVERAGE HOUSE VALUE	\$289,827	\$307,347	\$310,278

Demographics data derived from AlphaMap



Ben Ganzkow, CCIM

PRINCIPAL

918.946.5855

ben@legacypadvisors.com

Jonathan Cowan, MBA, CCIM

PRINCIPAL

918.728.9672

jonathan@legacypadvisors.com

Sam Mitchell, CCIM

ASSOCIATE

817.565.9601

sam@legacypadvisors.com

