



**FOR LEASE | UP TO 28,105 SF AVAILABLE**

# **307 N. HURSTBOURNE PARKWAY**

Louisville, KY 40222

# FORUM IV

## PROPERTY HIGHLIGHTS

Space available on first and second floor

---

Four-building, well-landscaped, 330,000-sf Class A Forum Office Park

---

Located on Hurstbourne Parkway just north of Shelbyville Road

---

Easy access to I-64 and I-264

---

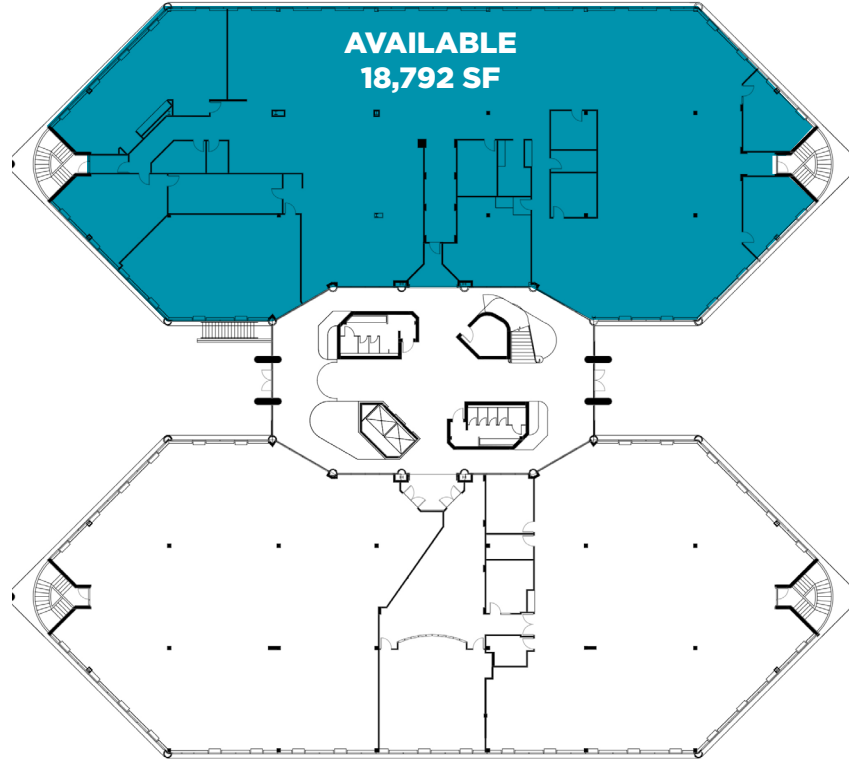
Numerous nearby amenities including restaurants, retail, services and hotels

---



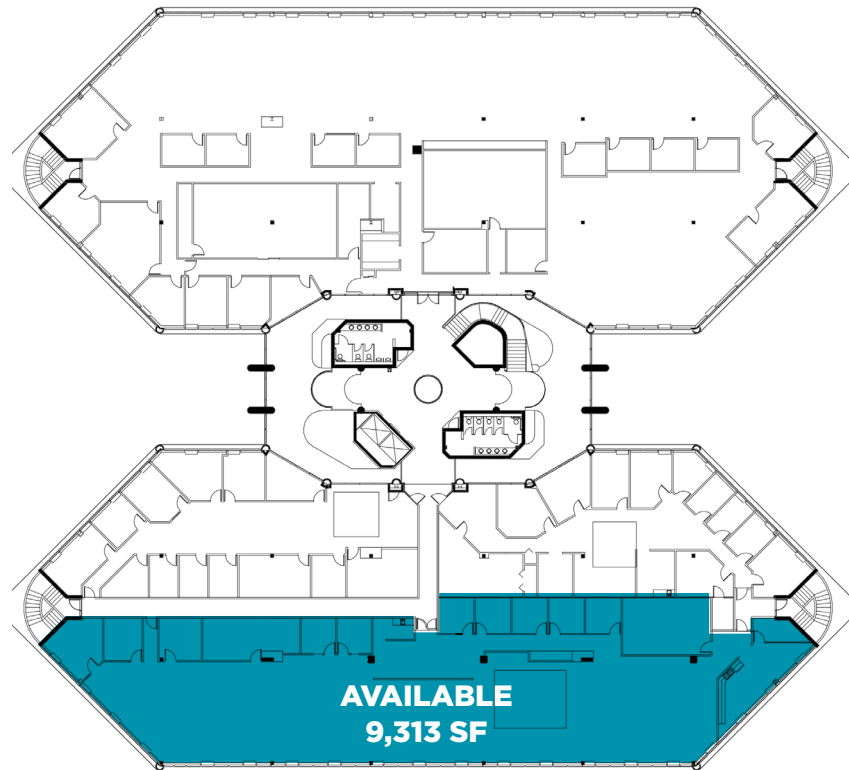
## 1st Floor Plan

---

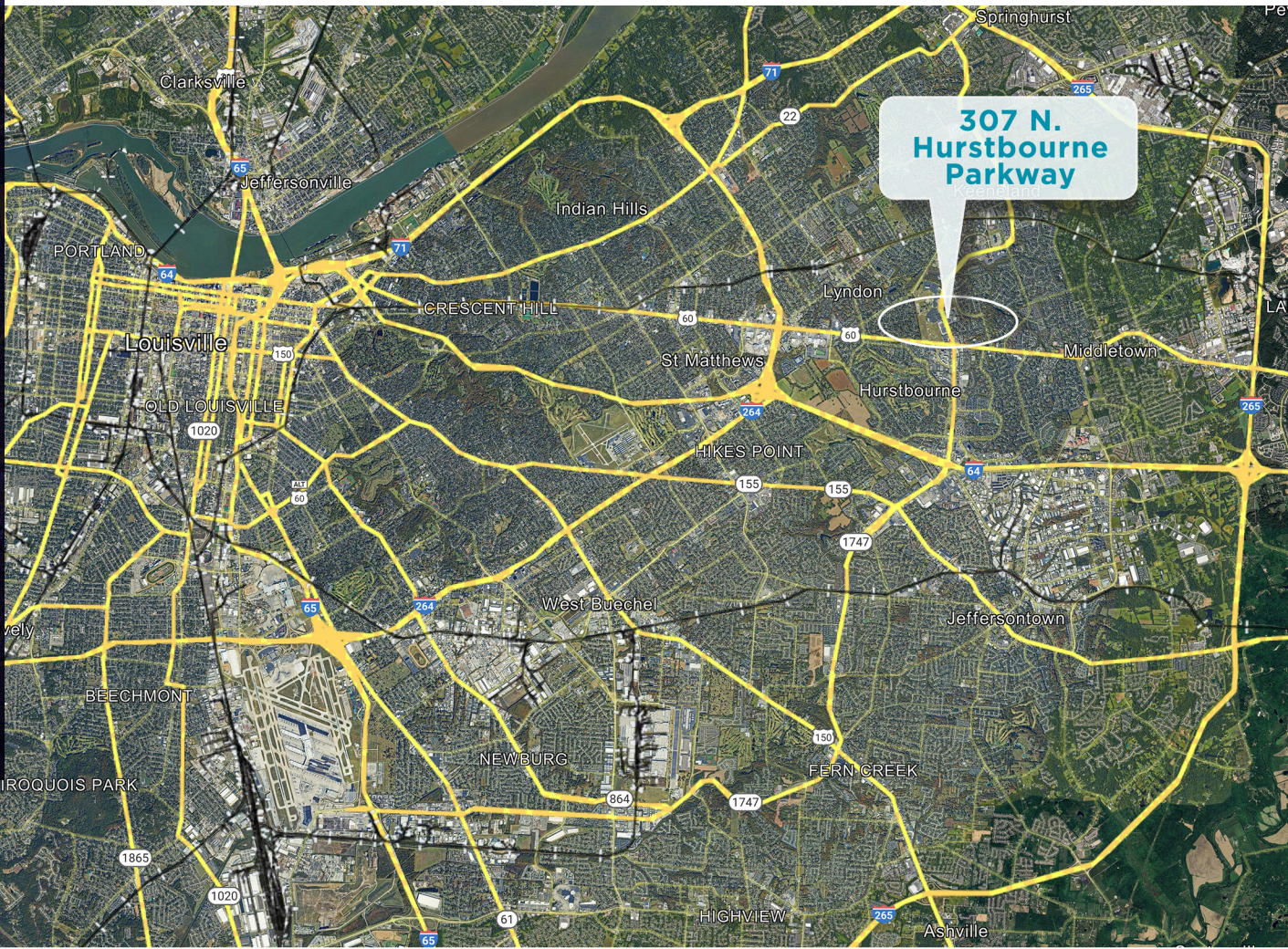


## 2nd Floor Plan

---






# LOCATION MAP



**307 N.  
Hurstbourne  
Parkway**

## DEMOGRAPHICS

	1 Mile	3 Miles	5 Miles
 <b>Population:</b>	9,649	76,471	208,468
 <b>Average Household Income:</b>	\$138,816	\$119,080	\$123,558
 <b>Number of Employees:</b>	15,969	66,839	177,155

# AMENITY MAP



307 N. Hurstbourne Parkway

Jason's deli

HOMEWOOD SUITES

SLUMBERBEST St. Matthews Pharmacy  
BRISTOL BAR & GRILLE TALBOTS Providence  
Established 1977 The King FRESH On The Table! 502.883.3153

Residence INN BY MARRIOTT

SmashBURGER verizon Walgreens

Shiraz Grill

HAVERTYS FURNITURE

Starbucks

P.F. CHANG'S

Speedway

## TRAFFIC COUNTS



**N. Hurstbourne Parkway:**  
22,300 ADT



**Shelbyville Road:**  
34,500 ADT



## CONTACT

BRENT BOLAND, CCIM  
Senior Director  
+1 502 384 4494 ext. 134  
bboland@commercialkentucky.com

BRENT DOLEN, SIOR, CCIM  
Senior Director  
+1 502 719 3262  
bdolen@commercialkentucky.com

©2024 Cushman & Wakefield. All rights reserved. The material in this presentation has been prepared solely for information purposes, and is strictly confidential. Any disclosure, use, copying or circulation of this presentation (or the information contained within it) is strictly prohibited, unless you have obtained Cushman & Wakefield's prior written consent. The views expressed in this presentation are the views of the author and do not necessarily reflect the views of Cushman & Wakefield. Neither this presentation nor any part of it shall form the basis of, or be relied upon in connection with any offer, or act as an inducement to enter into any contract or commitment whatsoever. NO REPRESENTATION OR WARRANTY IS GIVEN, EXPRESS OR IMPLIED, AS TO THE ACCURACY OF THE INFORMATION CONTAINED WITHIN THIS PRESENTATION, AND CUSHMAN & WAKEFIELD IS UNDER NO OBLIGATION TO SUBSEQUENTLY CORRECT IT IN THE EVENT OF ERRORS.



**CUSHMAN &  
WAKEFIELD**

Commercial Kentucky