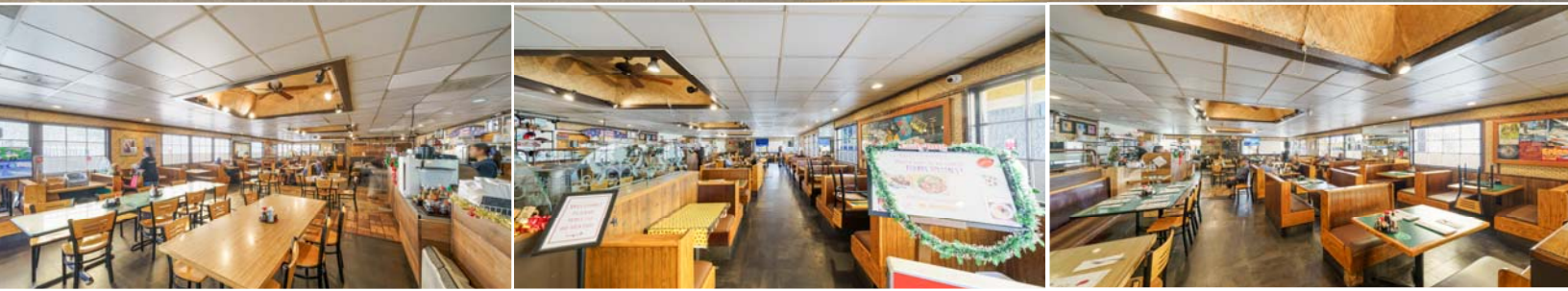


# RESTAURANT

## CENTRAL GARDENA RETAIL FOR SALE

**15926 S Western Ave  
Gardena, California 90247**



### PROPERTY INFORMATION

- ±2,865 SF building / ±18,502 SF land
- 40 parking spaces / Legacy pylon signage
- Zoned Gardena C3 (HO-5), Retail Sales / Restaurants / Shops & Stores / Offices

### HIGHLIGHTS

- Centrally located in the heart of Gardena / Redondo Beach Blvd & Western Ave
- Nearby retail: Target, Ralphs, ALDI, McDonald's, Starbucks, Auto Dealerships
- Close proximity to 91 & 110 Fwys, street frontage, valuable and spacious parking



**OMNI REALTY & INVESTMENT GROUP, CO.**

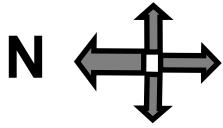
*Omni Realty & Investment*



**CPGI**

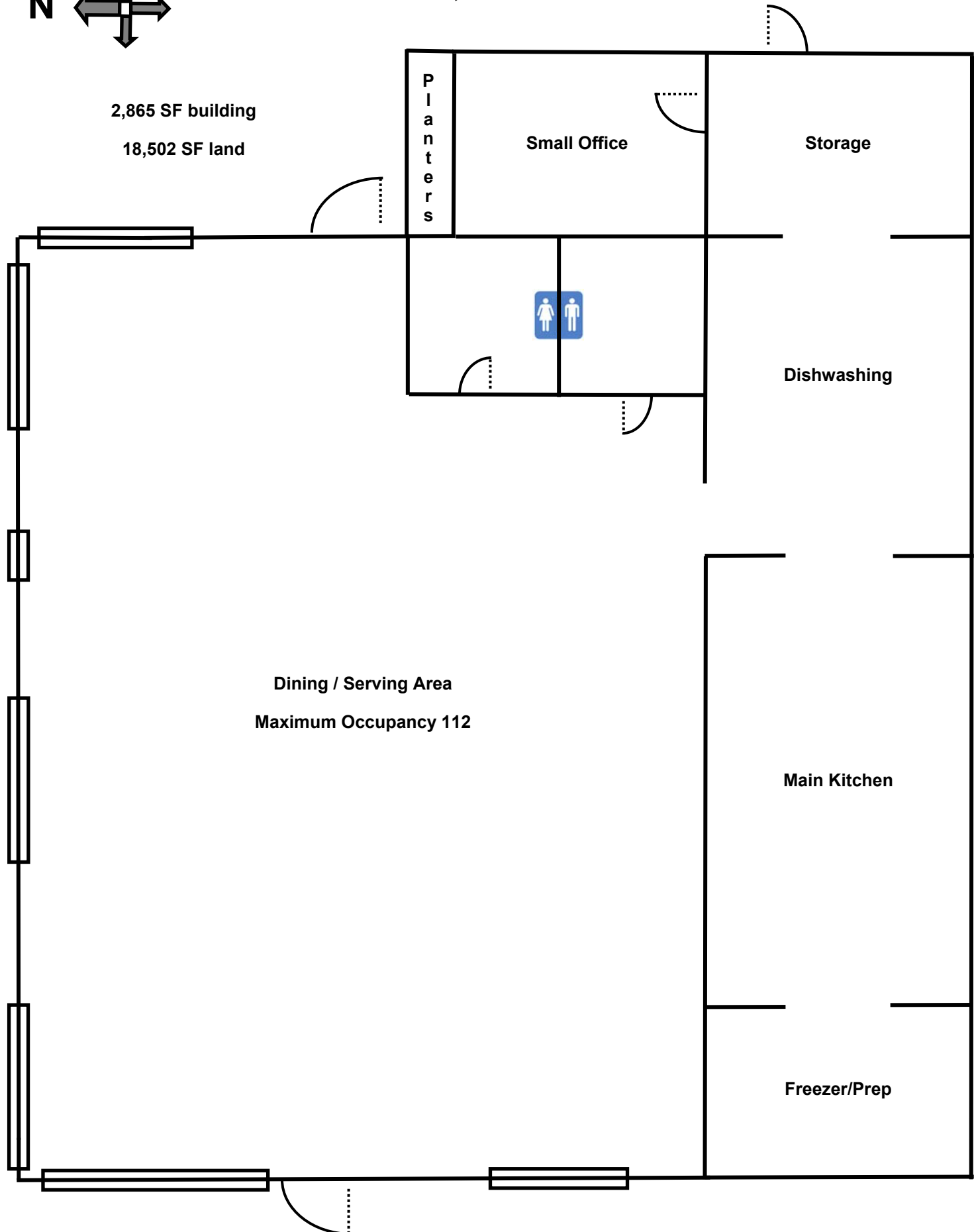
# 15926 S Western Ave

Gardena, California 90247



2,865 SF building

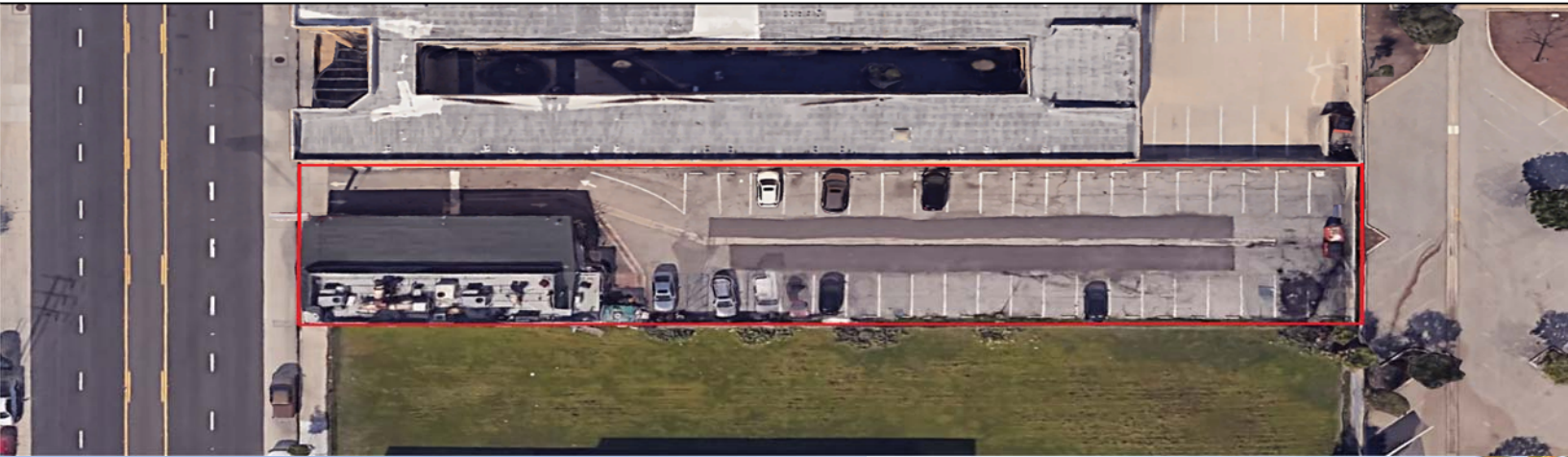
18,502 SF land



\*Plan depiction to show general layout and is not drawn to scale\*

# RESTAURANT

## CENTRAL GARDENA RETAIL FOR SALE



©2025 CPGI

NO WARRANTY OR REPRESENTATION, EXPRESS OR IMPLIED, IS MADE TO THE ACCURACY OR COMPLETENESS OF THE INFORMATION CONTAINED HEREIN, AND SAME IS SUBMITTED SUBJECT TO ERRORS, OMISSIONS, CHANGE OF PRICE, RENTAL OR OTHER CONDITIONS, WITHDRAWAL WITHOUT NOTICE, AND TO ANY SPECIAL LISTING CONDITIONS IMPOSED BY THE PROPERTY OWNER(S). AS APPLICABLE, WE MAKE NO REPRESENTATION AS TO THE CONDITION OF THE PROPERTY (OR PROPERTIES) IN QUESTION.

**Steve Sunjoo Kim**  
**213.321.5400 | sunstevekim@yahoo.com**



**OMNI REALTY & INVESTMENT GROUP, CO.**

*Omni Realty & Investment*

3055 Wilshire Blvd, Suite 810 | Los Angeles, California 90010 | CA DRE #01299519

**Johnny Cho**  
**714.505.8225 | jcho@cpgi-re.com**

**CPGI | cpgi-re.com**

2271 W Malvern Ave 245 | Fullerton, California 92833 | CA DRE #01862441

