

Rabbit Springs Rd  
Lucerne Valley, CA. 92356



**Rabbit Springs Rd.**

**RYAN TRAVIS**

760.983.2594 [RTravis@KurschGroup.com](mailto:RTravis@KurschGroup.com)

BRE # 01358790 Corporate BRE # 01896143

12180 Ridgecrest Rd, Suite 232, Victorville, CA 92395  
760.983.2383 • [RTravis@kurschgroup.com](mailto:RTravis@kurschgroup.com) • [Kurschgroup.com](http://Kurschgroup.com)



This information has been secured from sources we believe to be reliable. Kursch Group, Inc. and/or agents involved, make no representations or warranties, expressed or implied, as to the accuracy of the information. All information should be verified with another outside agency, government entity or property owner as applicable.

## ADDRESS

Rabbit Springs Rd.  
Lucerne Valley, CA 92356

## PROPERTY OVERVIEW

Central Lucerne Valley location near the intersection of Hwy 18 & Rabbit Springs Rd. A dedicated roadway provides access to all parcels south of Rabbit Springs Rd. Picturesque desert landscape nestled against an elevated backdrop. This elevation change provides for a protected and secluded alcove as the topography changes rising from the North to the South. Lucerne Valley sits at 3,000ft elevation offering four seasons and wide-open spaces utilized by many for livestock or outdoor recreation – sitting about midway between Big Bear and Apple Valley the community of Lucene Valley offers a rural setting with easy access to city amenities.

## APN:

0451-052-68

## MUNICIPALITY

Lucerne Valley| County of San Bernardino

## ZONING

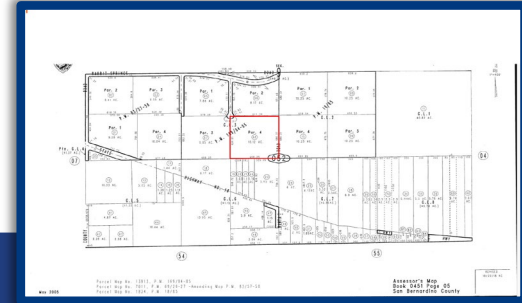
Rural Land

## SIZE

±10.12 acres

## ASKING PRICE FOR SALE

**\$42,500**



# SITE SUMMARY

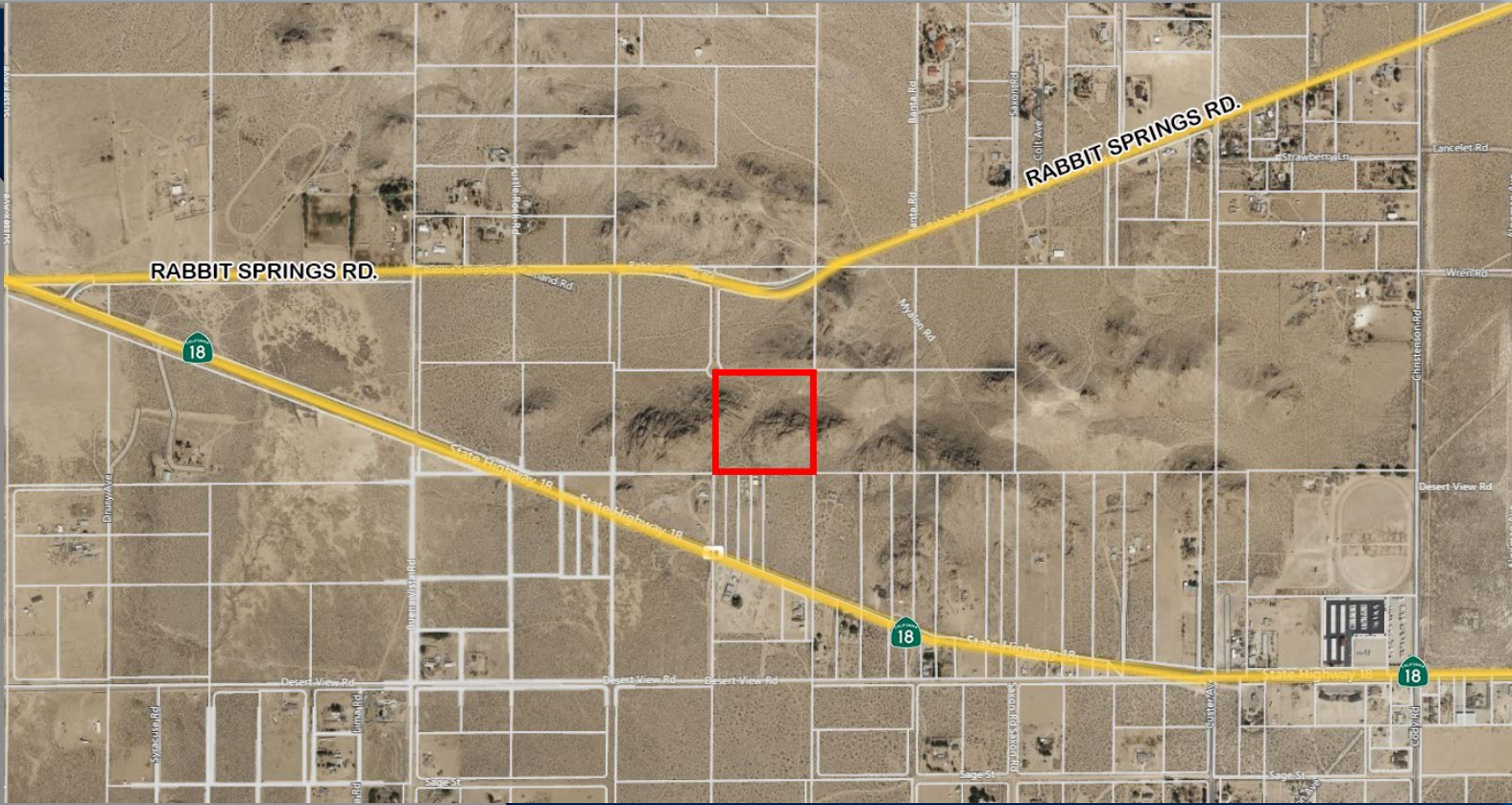
# Rabbit Springs Rd. ±7.86 acres



**KURSCH**  
GROUP  
COMMERCIAL REAL ESTATE

This information has been secured from sources we believe to be reliable. Kursch Group, Inc. and/or agents involved, make no representations or warranties, expressed or implied, as to the accuracy of the information. All information should be verified with another outside agency, government entity or property owner as applicable.





# BRIGHTLINE



With a completion date expected in 2028, Brightline West will be the country's first true high-speed passenger rail operation. The Victor Valley station, located on nearly ±300 acres at Dale Evans Parkway and I-15, will serve as the Maintenance of Way facility and possible future hub for the proposed High Desert Corridor and California High Speed Rail lines. The project is expected to provide over 35,000 construction jobs and 1,000+ permanent jobs while connecting two of America's most popular destinations in Los Angeles and Las Vegas.



This information has been secured from sources we believe to be reliable. Kursch Group, Inc. and/or agents involved, make no representations or warranties, expressed or implied, as to the accuracy of the information. All information should be verified with another outside agency, government entity or property owner as applicable.



# Barstow International Gateway (BIG)



## Overview

BNSF Railway plans to invest more than \$1.5 billion to construct a state-of-the-art master-planned rail facility in Southern California—and the first being developed by a Class 1 railroad. The Barstow International Gateway will be an approximately 4,500-acre new integrated rail facility on the west side of Barstow, consisting of a rail yard, intermodal facility and warehouses for transloading freight from international containers to domestic containers.

