

RETAIL SPACE FOR LEASE

±1,900 Square Feet



66 WEST SANTA CLARA STREET, SAN JOSE

RITCHIE Commercial
RESPONSIBLE REAL ESTATE

For More Information, Please Contact Exclusive Agents:

MARK RITCHIE mritchie@ritchiecommercial.com
408.971.2700 Ext. 106 DRE Lic. #00685426

PAUL MELNYK pmelnyk@ritchiecommercial.com
408.282.8511 DRE Lic. #01270795

San Francisco | San Jose | Santa Cruz | Walnut Creek

Property Highlights:

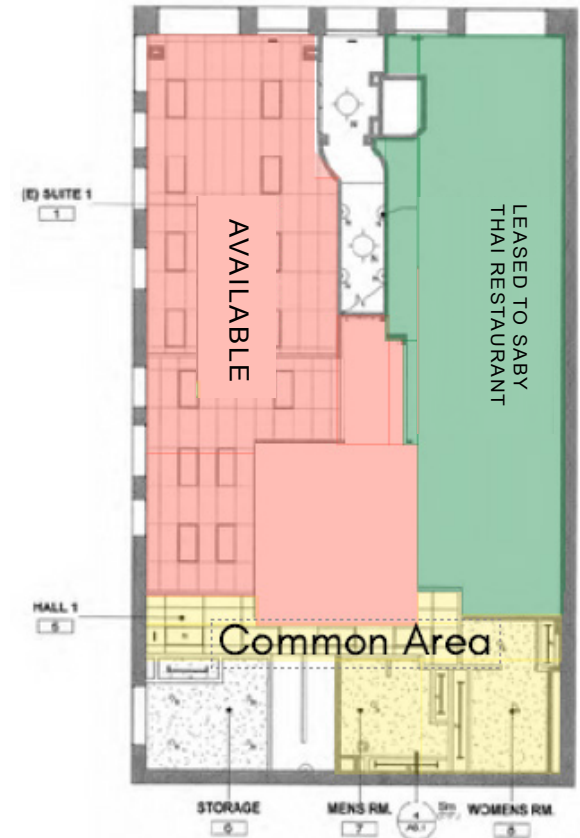
- **Excellent Visibility**
- **Corner Retail Location with Great Exposure to Santa Clara Street**
- **Former Peet's Coffee & Verizon**
- **Negotiable Terms**
- **Available Now!**

RETAIL SPACE FOR LEASE

±1,900 Square Feet



66 WEST SANTA CLARA STREET, CA.



RITCHIE *Commercial*
RESPONSIBLE REAL ESTATE

For More Information, Please Contact Exclusive Agents:

MARK RITCHIE mritchie@ritchiecommercial.com
408.971.2700 Ext. 106 DRE Lic. #00685426

PAUL MELNYK pmelnyk@ritchiecommercial.com
408.282.8511 DRE Lic. #01270795

34 W. SANTA CLARA STREET, SAN JOSE, CA 95113
DRE # 01209214 | www.ritchiecommercial.com
1 408.971.2700 f 1 408.971.1600

San Francisco | San Jose | Santa Cruz | Walnut Creek