

ARI MENCIAS
CADRE# 02085900
310-943-8534
Ari@cbi-commercial.com



10825 Venice Blvd
Los Angeles, CA 90034

Commercial Brokers International

FOR LEASE

2nd GEN RESTAURANT





TABLE OF CONTENT

PROPERTY
OVERVIEW

01

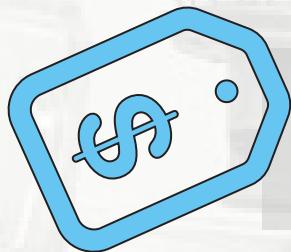
PROPERTY
PICTURES

02

MARKET
OVERVIEW

03

PROPERTY OVERVIEW



+/- \$2.83 psf MG

PROPERTY DESCRIPTION

PROPERTY ADDRESS

10825 VENICE BLVD

CITY, STATE, ZIP

LOS ANGELES, CA

BUILDING SIZE

3,000SF

USAGE

2ND GEN RESTAURANT

Positioned along one of West Los Angeles' most active retail corridors, is a rare opportunity to secure a **highly visible asset** in the heart of the **Mar Vista trade area**. Surrounded by a complementary mix of established national and local retailers, such as Abihiruchi Grill & Dama Grill the asset benefits from strong co-tenancy synergy that **drives consistent consumer traffic** and reinforces the corridor's retail performance. Supported by dense residential neighborhoods, strong household incomes, and a growing population of young professionals, along with close proximity to **Culver City's media and tech hub**, enhancing both daytime and evening demand.

PROPERTY PICTURES



PROPERTY PICTURES



MARKET OVERVIEW



CRUMBL
PANDA EXPRESS
RALPHS
LA FITNESS
H&R BLOCK

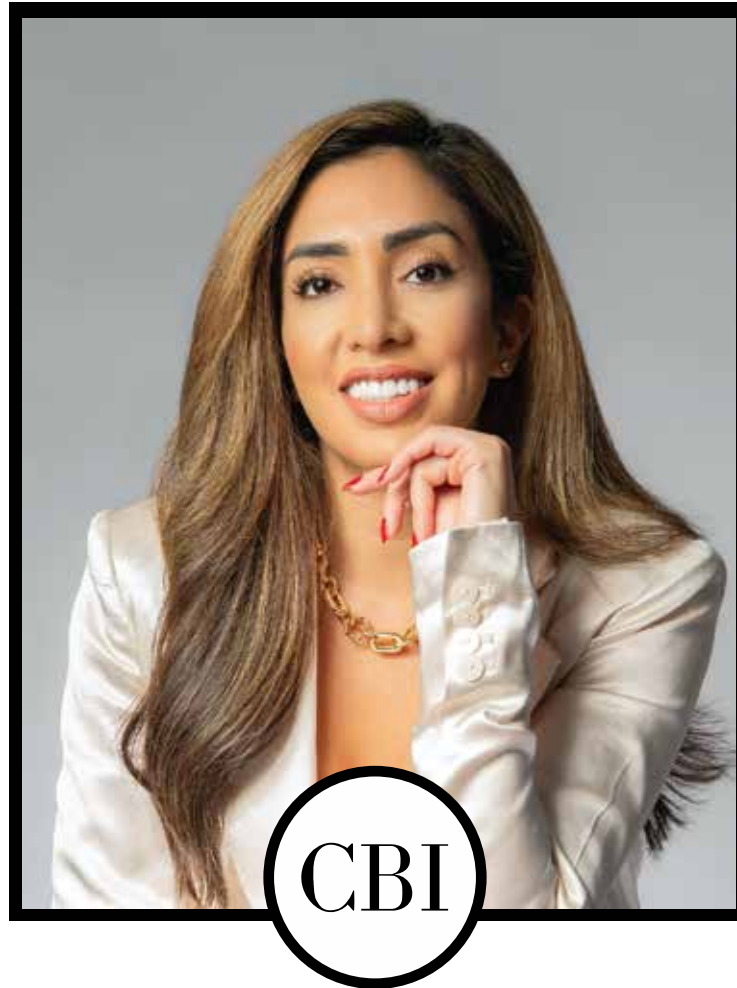
YOGURT LAND
BANK OF AMERICA
SIT 'N SLEEP
BEST BUY
DAVES HOT CHICKEN

You acknowledge that neither Tenant, Owner, nor Commercial Brokers International has made any representations or warranties as to the accuracy or completeness of the materials and these materials are subject to, among other things, correction of errors and omissions, deletions or change in terms, accuracy of photos or renderings. Any information contained herein is not a substitute for a thorough due diligence investigation by any prospective client. This marketing has been prepared to provide summary information (some of which may not be verified) to the prospective tenants and to establish a preliminary level of interest in the subject property. The information contained herein has been obtained from sources we believe to be reliable; however, has not been verified by CBI, Tenant, or the Owner.

Prospective clients are advised to conduct their own investigations into the property, including but not limited to: Proposed use, the size and square footage of the property and any improvements; compliance with any Local, State, or Federal law and/or regulations; the presence or absence of any contaminating substances; the physical condition of any improvements.



11766 Wilshire Blvd #1120, Los Angeles, CA 90025



LISTED BY:

ARI MENCIAS

CADRE #02085900

ARI@CBI-COMMERCIAL.COM

310.943.8534



11766 WILSHIRE BOULEVARD, SUITE 1120,
LOS ANGELES, CA 90025 UNITED STATES
CA DRE #01523713
310.943.8530
INFO@CBICOMMERCIAL.COM