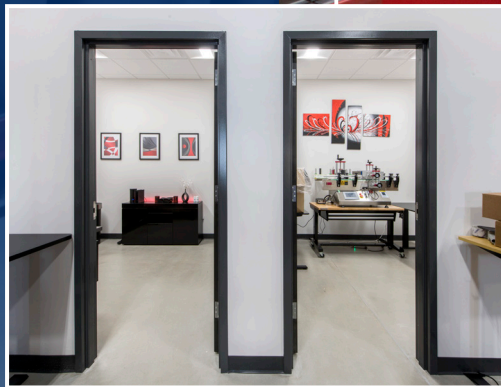


# SMALL-BAY WAREHOUSES

1,800-3,600 SF FOR LEASE IN WAKE FOREST

- » Small warehouses for lease from 1,800 SF up to 3,600 SF
- » Situated along Ligon Mill Road & Unicon Drive in Wake Forest
- » Located within Merritt Capital Business Park, a flex/light industrial development with up to six buildings totaling 459,300 SF
- » 18' clear heights
- » Spaces are at-grade, drive-in
- » Free surface parking
- » Positioned in a premier location, minutes from US-1, US-401 and I-540
- » Ability to build a customized space utilizing our in-house design and construction teams

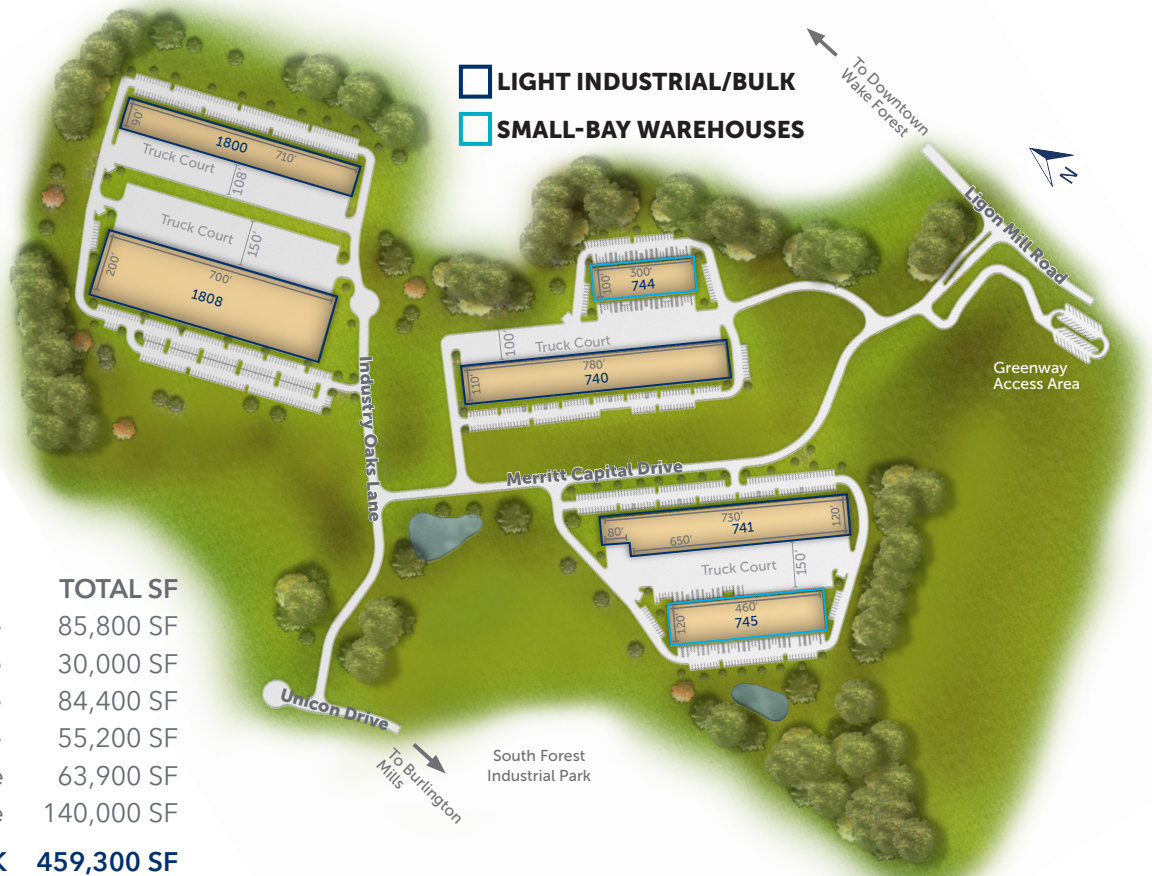


[www.WakeWarehouses.com](http://www.WakeWarehouses.com)

  
merritt  
PROPERTIES

# SITE PLAN

## Merritt Capital Business Park



### ADDRESS

740 Merritt Capital Drive  
 744 Merritt Capital Drive  
 741 Merritt Capital Drive  
 745 Merritt Capital Drive  
 1800 Industry Oaks Lane  
 1808 Industry Oaks Lane

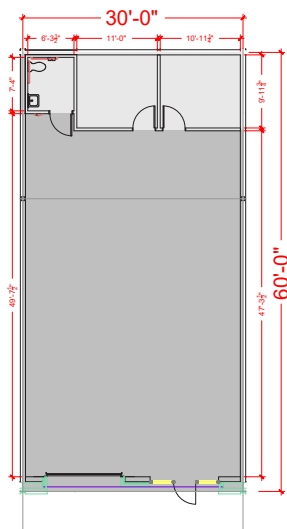
### TOTAL SF

85,800 SF  
 30,000 SF  
 84,400 SF  
 55,200 SF  
 63,900 SF  
 140,000 SF

**TOTAL PARK 459,300 SF**  
 142 acres

### SAMPLE FLOORPLAN 1,800 SF

Office - 300 SF  
 Warehouse - 1,500 SF



For additional information, contact:  
 Keith Wallace | [kwallace@merrittproperties.com](mailto:kwallace@merrittproperties.com)  
 Riley Burke | [rburke@merrittproperties.com](mailto:rburke@merrittproperties.com)

919.526.0070 | [www.WakeWarehouses.com](http://www.WakeWarehouses.com)

