

Colliers

Site

For Sub-Lease

Kevin O'Keefe
Senior Vice President
+1 757 217 1885
kevin.okeefe@colliers.com

Natalie Hucke
Senior Vice President
+1 757 217 1882
natalie.hucke@colliers.com

150 W Main Street | Suite 1100
Norfolk, VA 23510
+ 757 490 3300
colliers.com

730 W. 21st Street | Norfolk, VA

+/- 12,832 SF Available next door to new Aldi!
Will subdivide

Property Description

The Center Shops are located in what is considered the epicenter of Ghent, at the intersection of Colley Avenue and 21st Street. The property is convenient to many surrounding neighborhoods, but also to students, faculty and staff at Old Dominion University, along with the nearby Sentara Medical Complex and over 62,000 military and civilians working/living at Naval Station Norfolk.



Accelerating success.

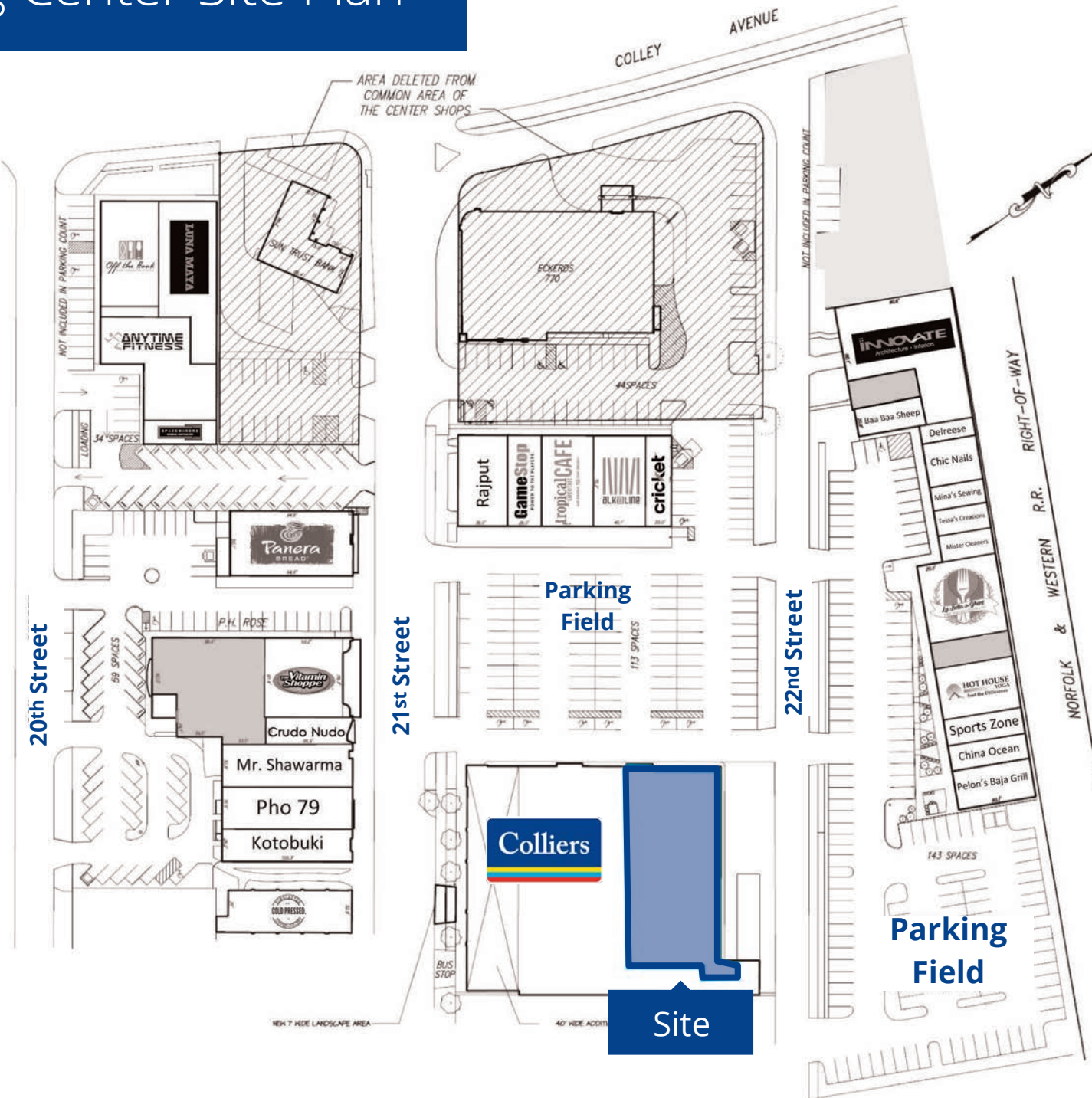
Property Summary

Address:	Center Shops 730 W. 21st Street Norfolk, VA 23517
Availability	+/- 12,832 SF
Rent:	\$17.00 PSF
CAM, Taxes & Insurance	Tenant to pay pro-rata share of CAM, taxes, and insurance estimated to be \$2.32 PSF Tax: \$1.33 Ins: \$0.22 CAM: \$0.77
Surrounding Retail:	Panera, Vitamin Shoppe, Anytime Fitness, Total Wine, Moe's, Rite Aid, Starbucks, Dollar Tree, Walgreens, ABC, The Fresh Market
Zoning:	C-C - Community Commercial (21st Street pedestrian commercial overlay)
Frontage:	78' 9"
Loadings:	Dedicated loading dock for the space
Ingress/Egress:	Three points of access via 21st Street, and three points of access off of 22nd Street
Traffic Counts:	14,000 VPD on 21st Street

Demographic Facts	1 Mile	3 Miles	5 Miles
Population	20,565	103,687	250,790
Average HH Income	\$79,714	\$71,314	\$62,756
Daytime Population	33,594	153,152	338,343

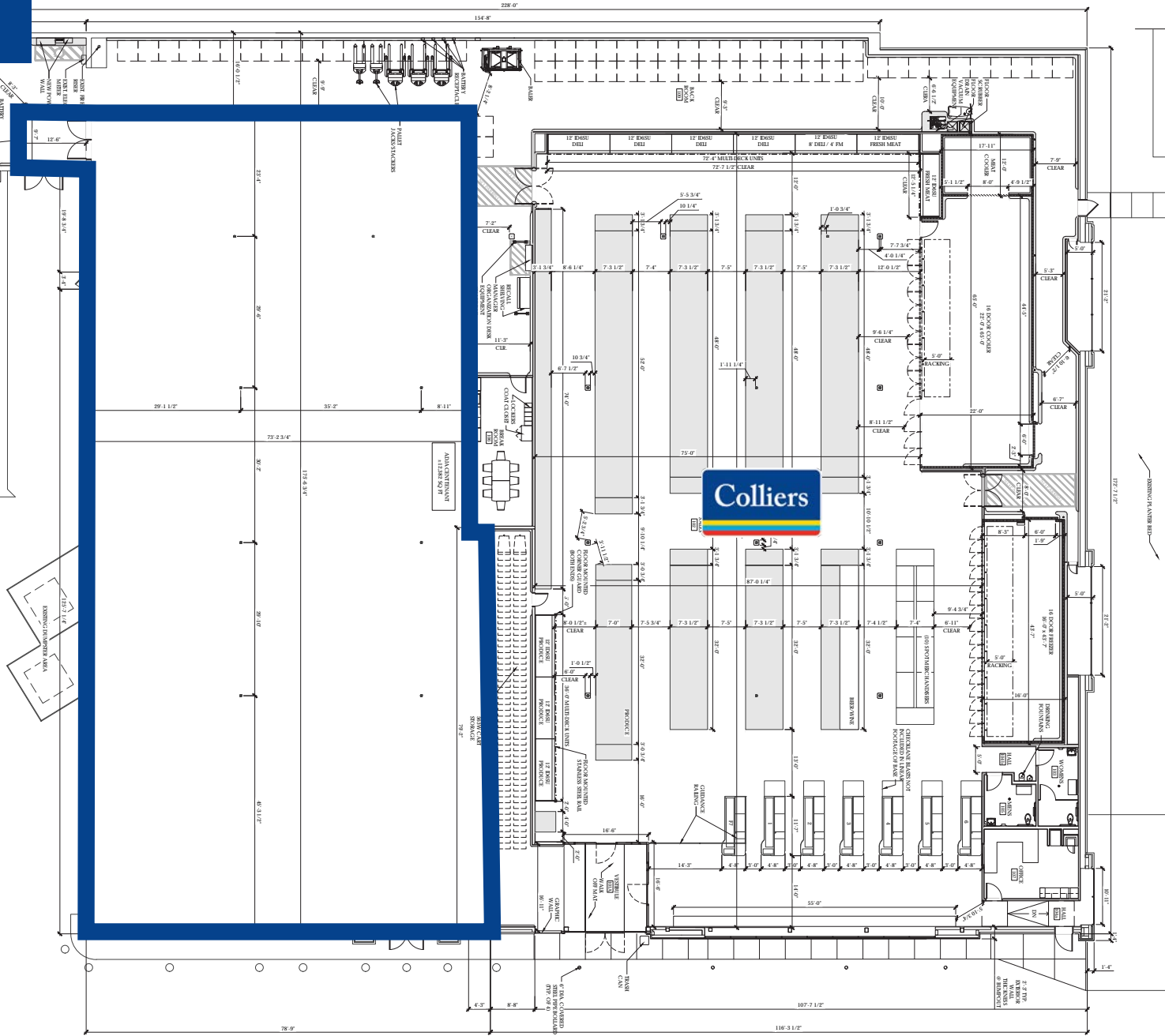


Shopping Center Site Plan



Site Plan

21st Street

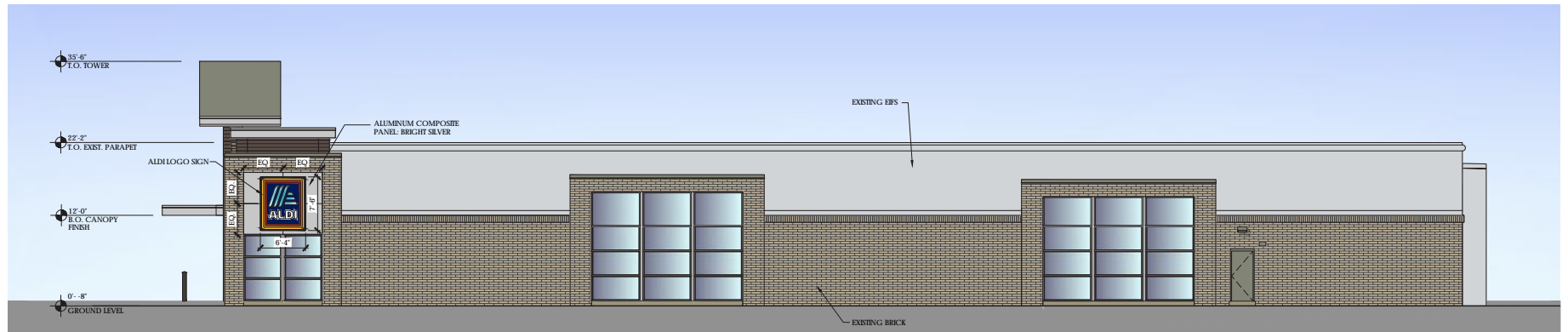


Key Plan



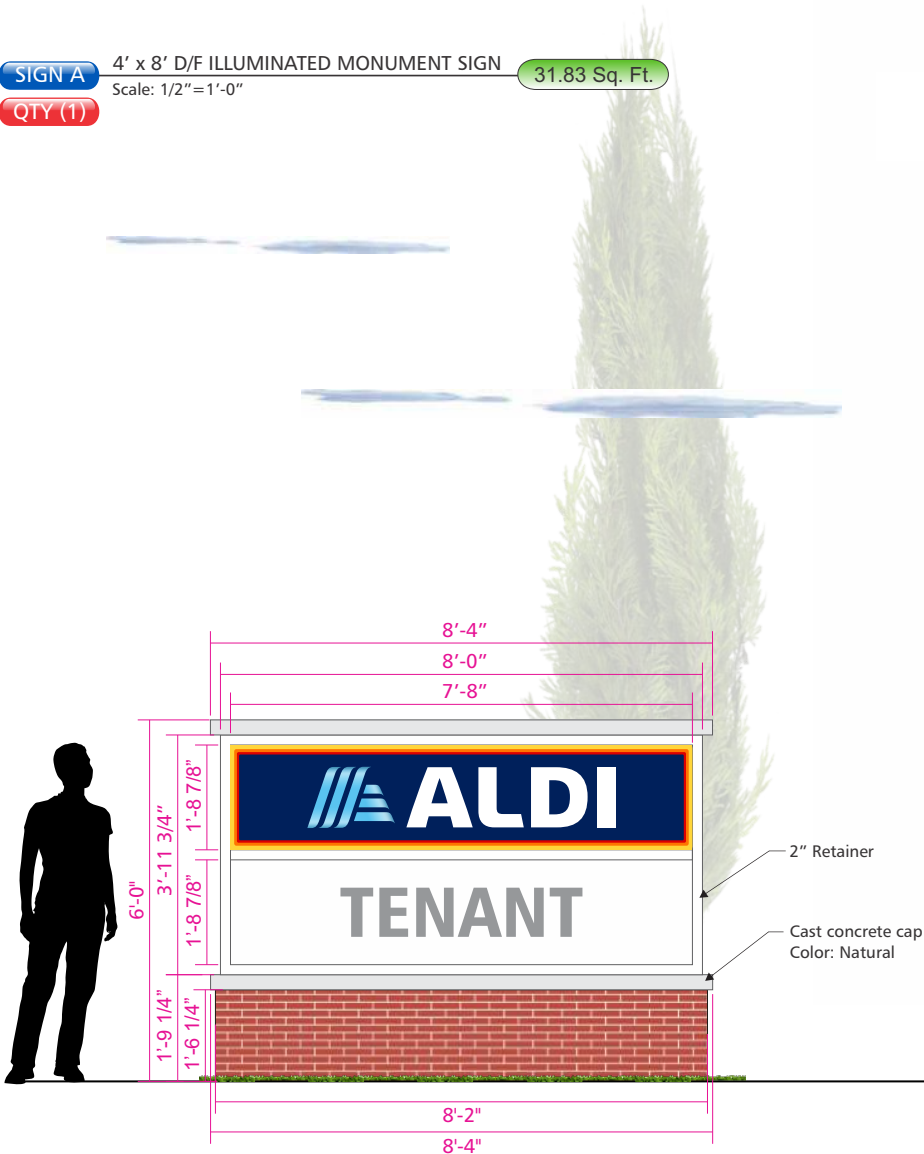
Parking Field

Site Elevation

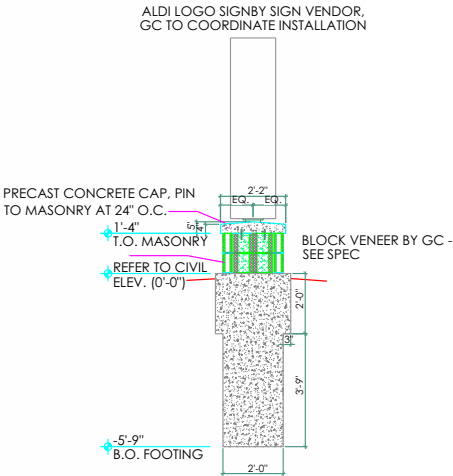


Proposed Monument Sign

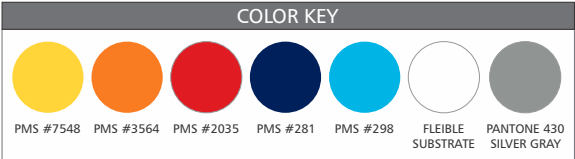
SIGN A 4' x 8' D/F ILLUMINATED MONUMENT SIGN 31.83 Sq. Ft.
QTY (1) Scale: 1/2"=1'-0"



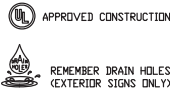
SIDE VIEW
Scale: NOT TO SCALE



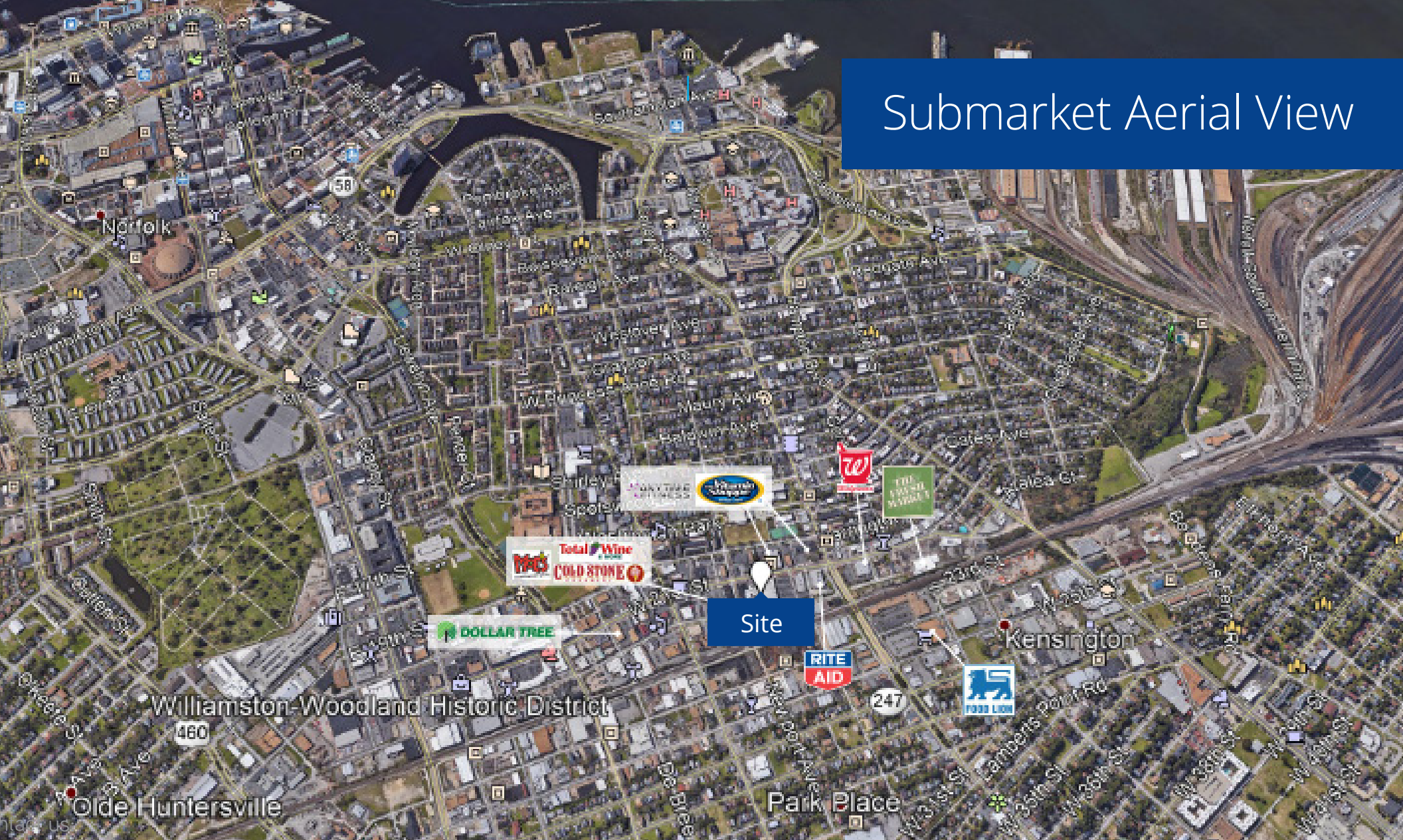
NOTES:
CONSULT LOCAL BUILDING CODE FOR DEPTH AND WIDTH OF FOOTINGS. CONFIGURATION VARIES DEPENDING ON SOIL AND FROST CONDITIONS



THIS SIGN IS INTENDED TO BE INSTALLED IN ACCORDANCE WITH THE REQUIREMENTS OF ARTICLE 600 OF NEC AND/OR OTHER APPLICABLE LOCAL CODES. THIS INCLUDES PROPER GROUNDING AND BONDING OF THE SIGN



Submarket Aerial View



Kevin O'Keefe
Senior Vice President
+1 757 217 1885
kevin.okeefe@colliers.com

Natalie Hucke
Senior Vice President
+1 757 217 1882
natalie.hucke@colliers.com



This document/email has been prepared by Colliers for advertising and general information only. Colliers makes no guarantees, representations or warranties of any kind, expressed or implied, regarding the information including, but not limited to, warranties of content, accuracy and reliability. Any interested party should undertake their own inquiries as to the accuracy of the information. Colliers excludes unequivocally all inferred or implied terms, conditions and warranties arising out of this document and excludes all liability for loss and damages arising there from. This publication is the copyrighted property of Colliers and /or its licensor(s). © 2025. All rights reserved. This communication is not intended to cause or induce breach of an existing listing agreement. Colliers International Virginia, LLC