

# Airpark East Business Park

7021 Albert Pick Road, Greensboro, NC

[www.cbre.com/triad](http://www.cbre.com/triad)

Single Story Flex Building | 18,406 SF



## Property Overview

A single-story flex building with brick and glass façade. Located in Airpark East, a professional campus lined with walking trails, an amphitheater, wooded picnic areas and a pergola overlooking the pond. On-site amenities include a café, conference/training rooms and fitness center. Immediately accessible to I-40 and Highway 68. Three miles from Piedmont Triad International Airport. Close to banks, hotels, residential communities, restaurants and shopping.

- + **Total Available:** 2,140± RSF
- + **Available Suites:**
  - Suite F: 2,140± RSF
- + **Parking:** 4/1,000 RSF



## Airpark East Office Park

7021 Albert Pick Road | Greensboro, NC 27409

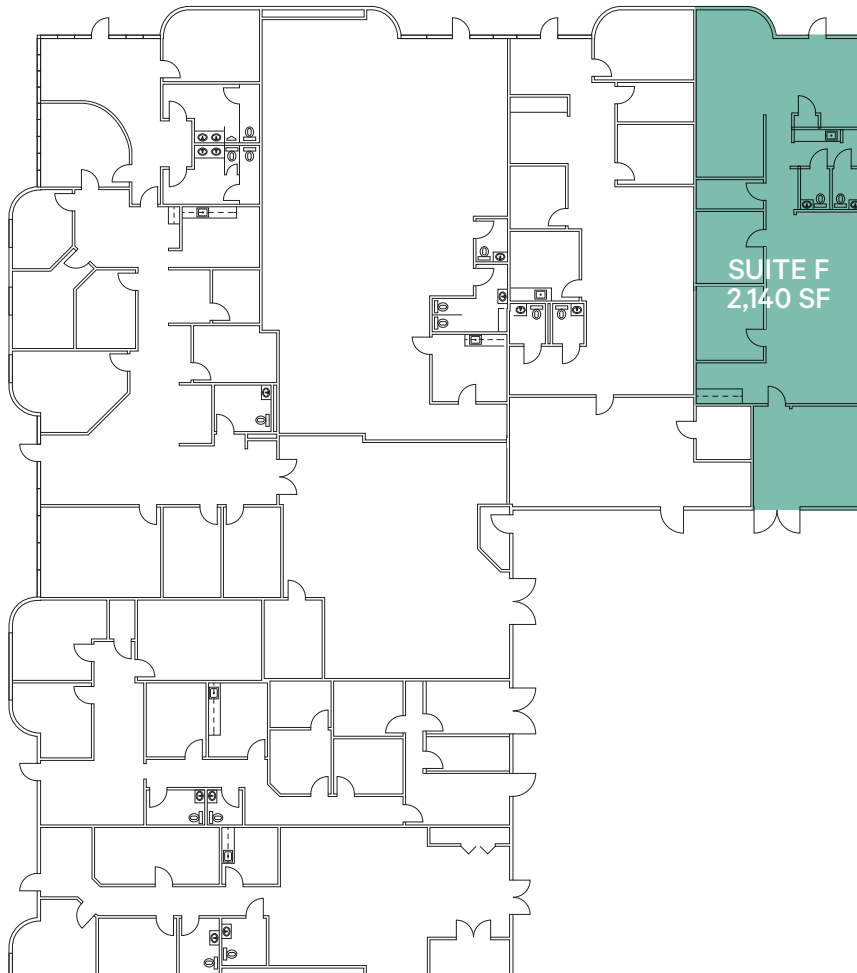
For Lease

### Building Overview

Year Built	1985
Zoning	CP
Telecom/Fiber	North State Communications, AT&T, and Spectrum
Building Access & Security	After hours roving security
Amenities	Deli at 7011 building, fitness center, conference/training rooms, bike storage, and walking trails
Green Features	TPO roof, low VOC finishes, and recycling program



### Floor Plans





## Airpark East Office Park

7021 Albert Pick Road | Greensboro, NC 27409

For Lease



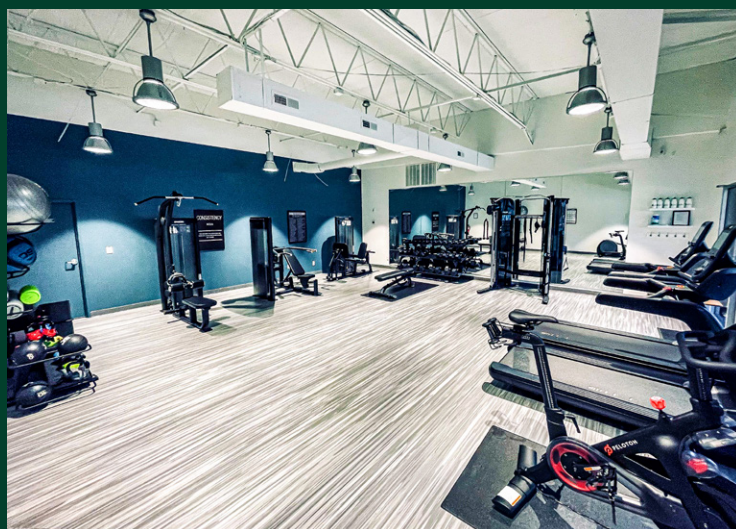


## Airpark East Office Park

7021 Albert Pick Road | Greensboro, NC 27409

For Lease

## Airpark East Amenities





## Airpark East Amenities

### Park Amenities

- Deli at 7011 Building
- Walking Trails
- Bike Storage
- Fitness Center
- Showers
- Conference/Training Rooms



### Walking Trails



### Amenities at 416 Gallimore Dairy Rd



- + Fitness Center
- + Showers
- + Conference/Training Room





## Airpark East Office Park

7021 Albert Pick Road | Greensboro, NC 27409

For Lease

# Location Map



## Contact Us

### Reggie Beeson

Vice President

+1 336 793 0947

reggie.beeson@cbre.com

### Richard Mossman

Executive Vice President

+1 336 499 9956

richard.mossman@cbre.com

### Sam Elliott

Associate

+1 336 478 4404

sam.elliott@cbre.com

© 2025 CBRE, Inc. All rights reserved. This information has been obtained from sources believed reliable, but has not been verified for accuracy or completeness. You should conduct a careful, independent investigation of the property and verify all information. Any reliance on this information is solely at your own risk. CBRE and the CBRE logo are service marks of CBRE, Inc. All other marks displayed on this document are the property of their respective owners, and the use of such logos does not imply any affiliation with or endorsement of CBRE. Photos herein are the property of their respective owners. Use of these images without the express written consent of the owner is prohibited.