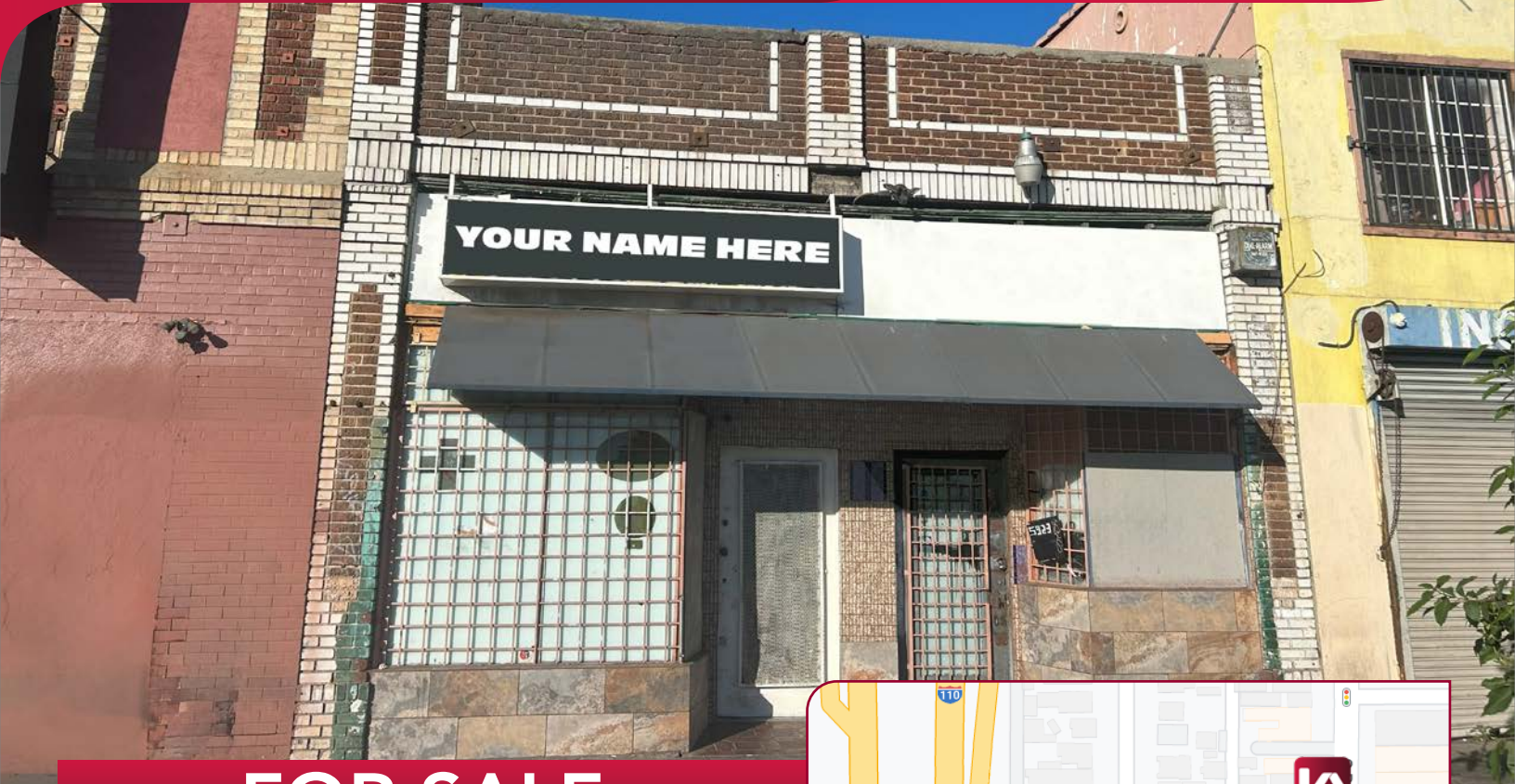


OWNER-USER RETAIL OR INVESTMENT

5923 BROADWAY LOS ANGELS, CA 90003

LEE & ASSOCIATES
COMMERCIAL REAL ESTATE SERVICES



FOR SALE

Asking
Price

\$499,999

- ▶ ± 1,875 SF Retail Building on ± 0.6 acres
- ▶ Zoned C2
- ▶ Gated Parking Lot
- ▶ Close Proximity to 110 and 10 freeway
- ▶ Two Tenants in Place Currently Month to Month and Interested in a Long-Term Lease

For more information, please contact:

DAVID KAUFMAN

Lic. #02109841

dkaufman@lee-associates.com

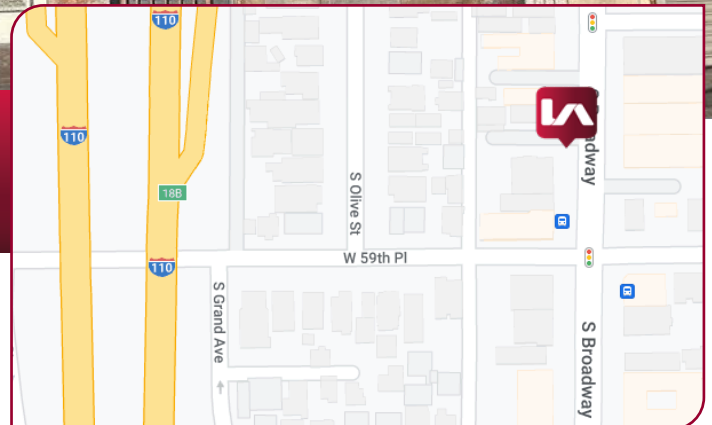
D 818.933.0311

CHRIS MCKENZIE

Principal - Lic. # 01984899

cmckenzie@lee-associates.com

D 818.933.0337



PROPERTY OVERVIEW

- ▶ Located within close Proximity to USC, LA Memorial Coliseum, BMO Stadium, DTLA Fashion District, Natural History Museum, LAX, and SoFi Stadium.
- ▶ Nearby developments include the Hollywood Park high-end live-work pedestrian development, the LA Clippers Intuit Dome, and the new state-of-the-art monorail system servicing Inglewood and surrounding areas.

All information furnished regarding property for sale, rental or financing is from sources deemed reliable, but no warranty or representation is made to the accuracy thereof and same is submitted to errors, omissions, change of price, rental or other conditions prior to sale, lease or financing or withdrawal without notice. No liability of any kind is to be imposed on the broker herein.

LEE & ASSOCIATES
COMMERCIAL REAL ESTATE SERVICES

LOCAL EXPERTISE. INTERNATIONAL REACH. WORLD CLASS.
LEE-ASSOCIATES.COM

Lee & Associates® LA North/Ventura, Inc.

Corp ID #01191898 - A Member of the Lee & Associates Group of Companies

15250 Ventura Blvd., Suite 100 - Sherman Oaks, CA 91403

No warranty or representation is made to the accuracy of the foregoing information. Terms of sale or lease and availability are subject to change or withdrawal without notice.

OWNER-USER RETAIL OR INVESTMENT

5923 BROADWAY LOS ANGELS, CA 90003



PROPERTY AERIAL



For more information, please contact:

DAVID KAUFMAN

Lic. #02109841
dkaufman@lee-associates.com
D 818.933.0311

CHRIS MCKENZIE

Principal - Lic. # 01984899
cmckenzie@lee-associates.com
D 818.933.0337

All information furnished regarding property for sale, rental or financing is from sources deemed reliable, but no warranty or representation is made to the accuracy thereof and same is submitted to errors, omissions, change of price, rental or other conditions prior to sale, lease or financing or withdrawal without notice. No liability of any kind is to be imposed on the broker herein.



LOCAL EXPERTISE. INTERNATIONAL REACH. WORLD CLASS.
LEE-ASSOCIATES.COM

Lee & Associates® LA North/Ventura, Inc.

Corp ID #01191898 - A Member of the Lee & Associates Group of Companies

15250 Ventura Blvd., Suite 100 - Sherman Oaks, CA 91403

No warranty or representation is made to the accuracy of the foregoing information. Terms of sale or lease and availability are subject to change or withdrawal without notice.

AMENITIES MAP



For more information, please contact:

DAVID KAUFMAN

Lic. #02109841
dkaufman@lee-associates.com
D 818.933.0311

CHRIS MCKENZIE

Principal - Lic. # 01984899
cmckenzie@lee-associates.com
D 818.933.0337

All information furnished regarding property for sale, rental or financing is from sources deemed reliable, but no warranty or representation is made to the accuracy thereof and same is submitted to errors, omissions, change of price, rental or other conditions prior to sale, lease or financing or withdrawal without notice. No liability of any kind is to be imposed on the broker herein.