



FOR LEASE

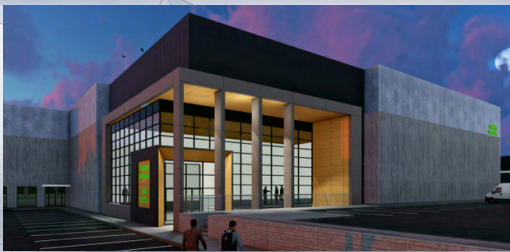
BRIDGEWATER NEW INDUSTRIAL BUILDING

★★★★★
EXCLUSIVE BROKER
Jordan Zimmel
Vice President, Zimmel Associates
...
email: jzimmel@zimmel.com
office: 732.661.9200
www.Zimmel.com

CORNER OF CHIMNEY ROCK ROAD & ROUTE 22 EAST



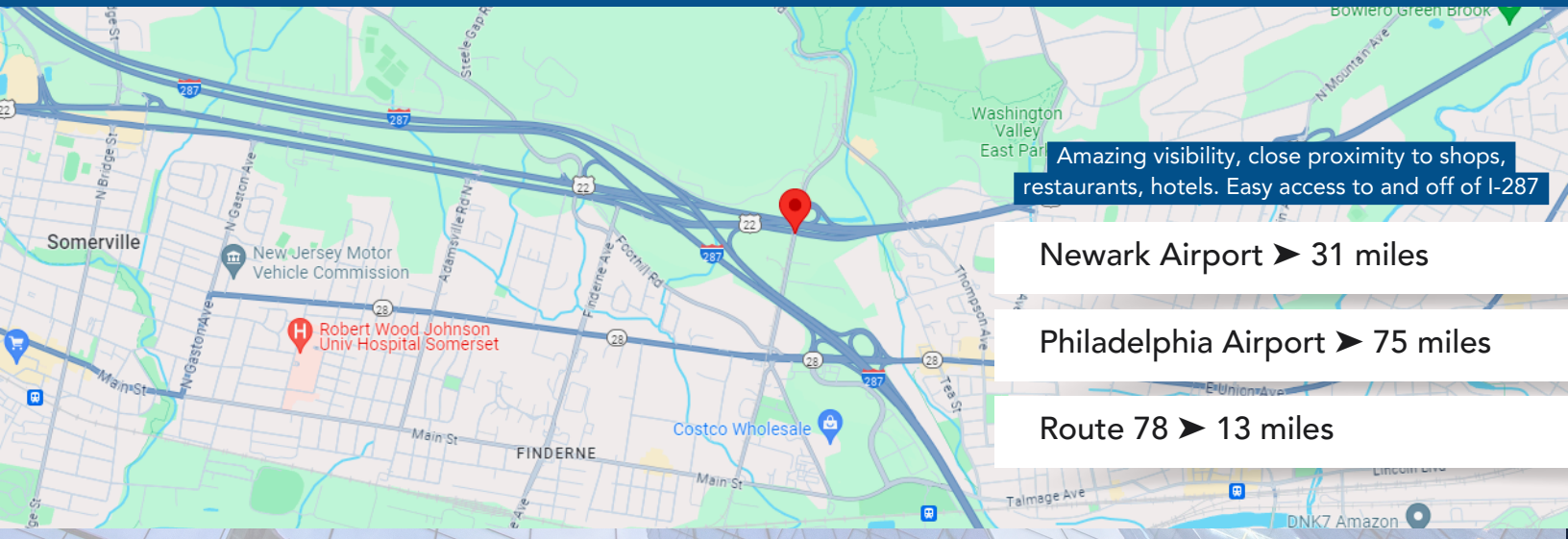
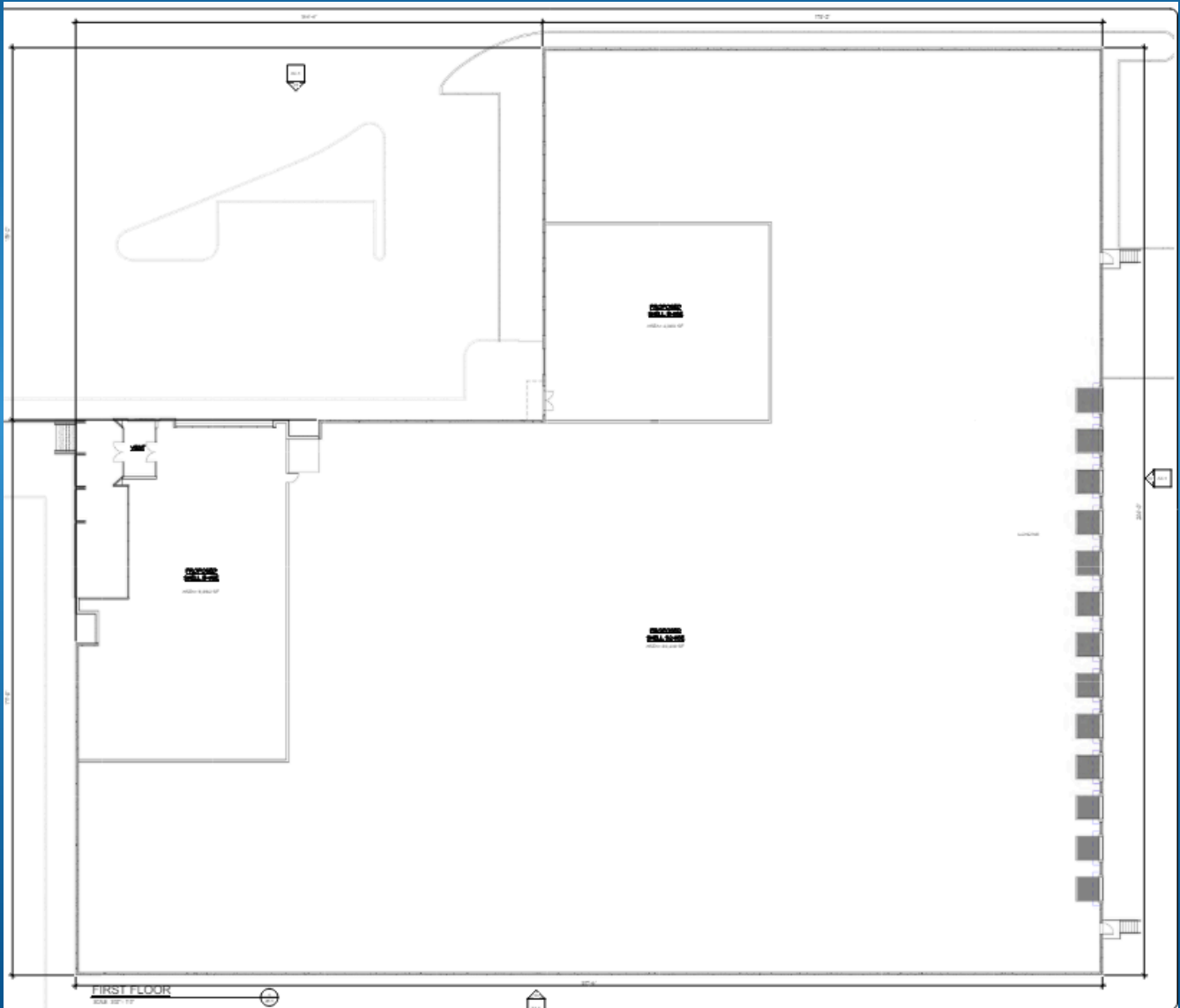
- Availability: Mid 2025
- Building Size: 73,429 SF
- Zoning: M1-C
- Construction Type: Tilt Up



- Ceiling Height: 36'
- Acres: 8 Acres
- LED Lighting



- Column Spacing: 57' x 57'
- Loading: 12 Tailboard, 1 Drive In
- Parking: 150 Spots



Amazing visibility, close proximity to shops, restaurants, hotels. Easy access to and off of I-287

Newark Airport ➤ 31 miles

Philadelphia Airport ➤ 75 miles

Route 78 ➤ 13 miles