



VALUE INDUSTRIAL PARTNERS, LLC

Industrial Real Estate Investment, Brokerage and Management

477 W. Wrightwood Avenue, Elmhurst, Illinois 60126 TEL: 630-333-1900 FAX: 630-333-1910



2816 Centre Circle Downers Grove, Illinois

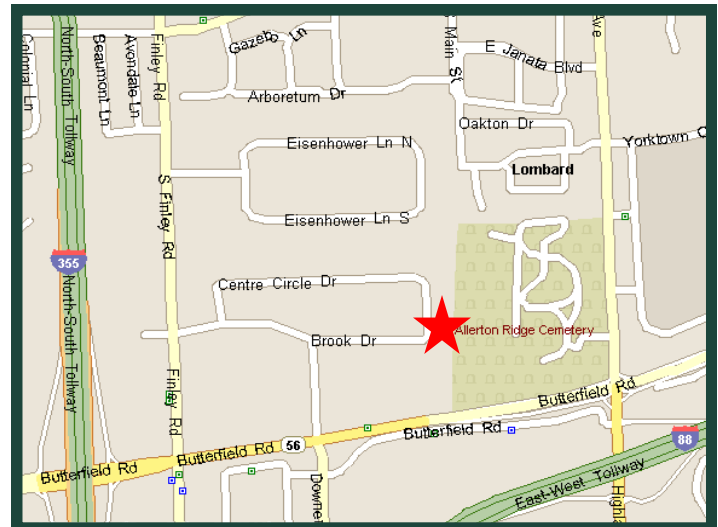
FOR LEASE 3,065 SF

Building Specifications

Available Size:	3,065 Square Feet
Building Size:	137,678 Square Feet
Office:	50%
Ceiling Height:	16'
Loading:	4 Common Docks
Power:	200 Amps
Heat:	Gas
Sprinklers:	Yes
Real Estate Taxes:	Included with Current Stop
CAM:	Included with Current Stop

Comments

- Professionally owned and managed
- Minutes to I-88 & I-355
- Great value for space with heavy office



For Further Information, Please Contact:

Brian P. Gedvilas, Director of Leasing
bgedvilas@valueindustrialpartners.com

Brian M. Liston, Principal
bliston@valueindustrialpartners.com

TEL: 630-333-1900 FAX: 630-333-1910

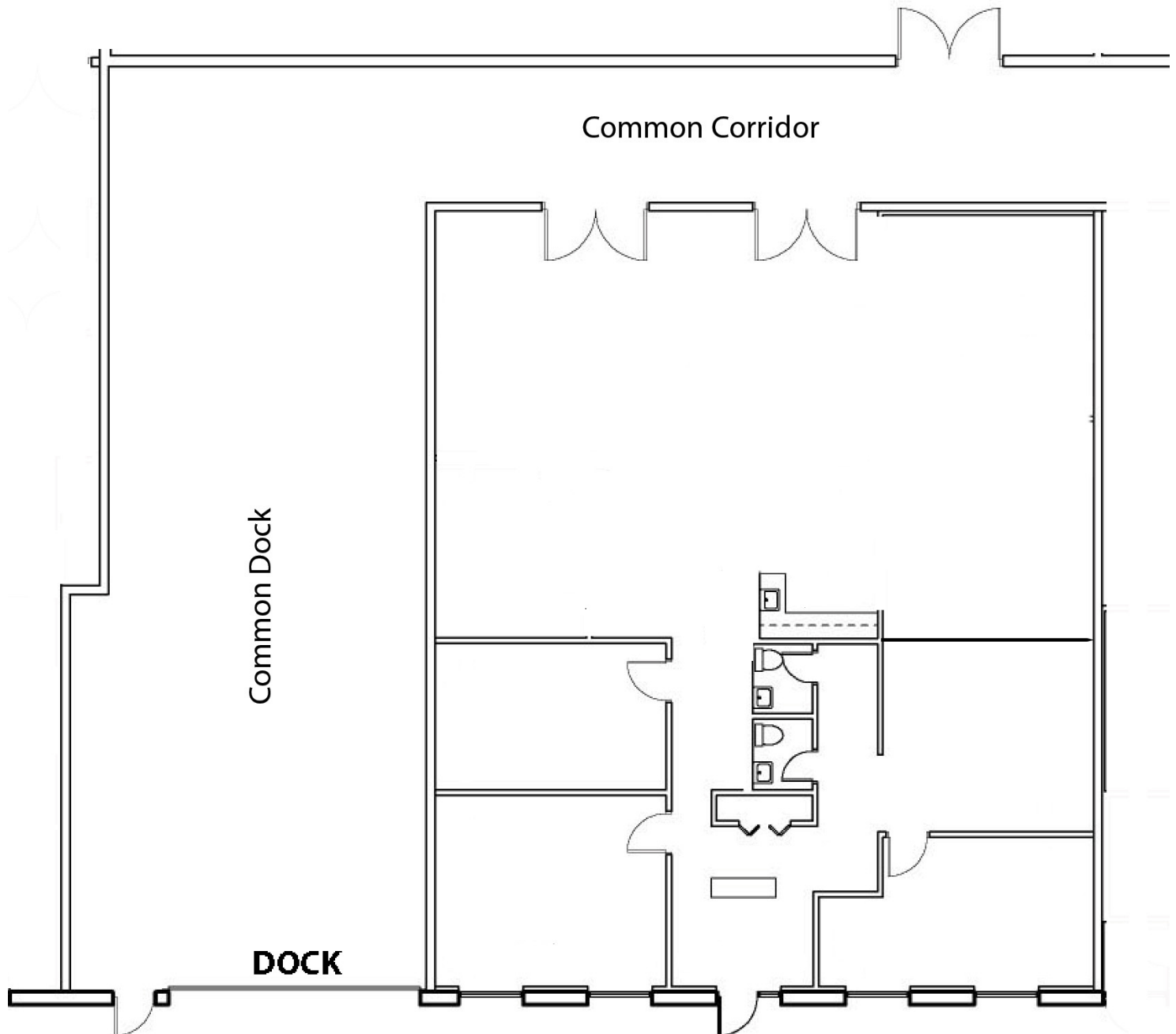
Officers of the firm have an ownership interest in this property.
Submitted subject to error, change in status, or withdrawal without notice.



VALUE INDUSTRIAL PARTNERS, LLC

Industrial Real Estate Investment, Brokerage and Management

LAYOUT



FOR ILLUSTRATION PURPOSES ONLY.

Officers of the firm have an ownership interest in this property.
Submitted subject to error, change in status, or withdrawal without notice.