



FOR LEASE

**Rare Opportunity
End Cap Retail Space
with Kamehameha Hwy
Frontage**

Pearl Kai Shopping Center

98-199 Kamehameha Hwy.

Aiea, Hawaii 96701

INVESTMENT SUMMARY

Type:	Retail / Restaurant
Space Size:	1,500 - 4,000 SF (Demisable)
Base Rent:	\$4.50 - \$5.50 per SF/mo.
CAM:	\$1.41 <i>Restaurant Use</i>
CAM:	\$1.16 <i>Retail Use</i>
Water/Sewer:	Included in CAM
Electricity:	Separately Metered



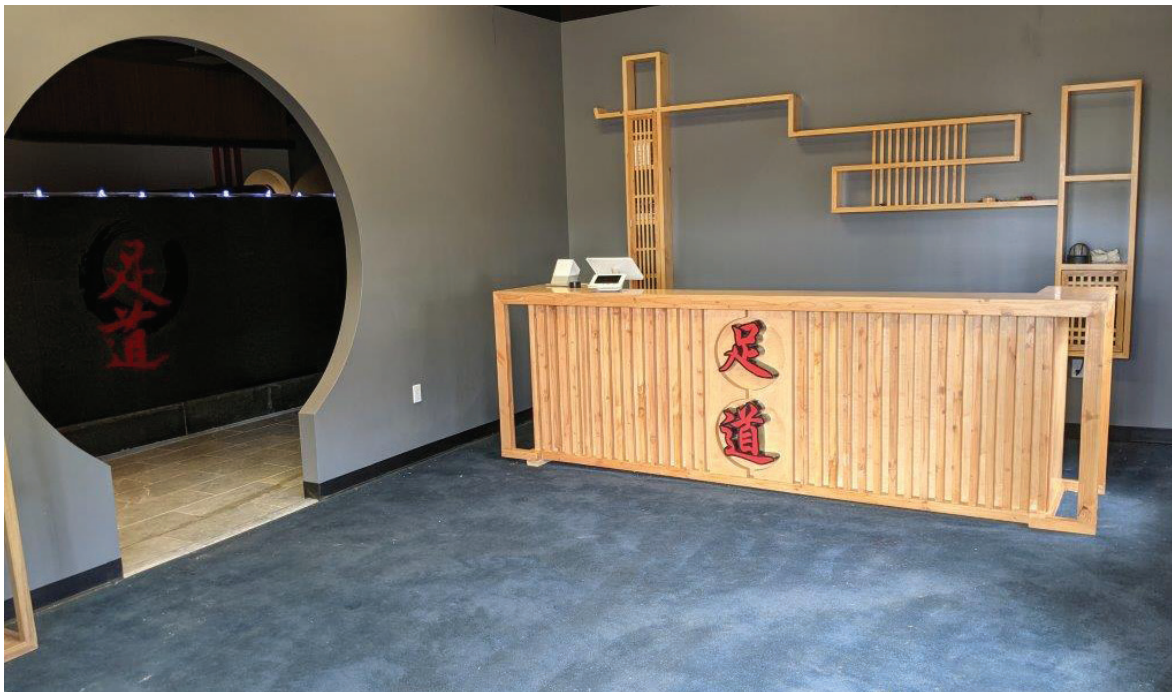
Brant M. Yasaka (S)
RS-68051
808-271-4697
byasaka@cbi-hawaii.com

Taryn Taylor (S)
RS-85465
808-282-4583
ttaylor@cbi-hawaii.com

Yuuki Inagawa (S)
RS-79726
808-342-3039
yinagawa@cbi-hawaii.com

NAI CBI Hawaii
1712 S. King Street Suite 201
Honolulu, HI 96826
808.942.7100 | www.cbi-hawaii.com



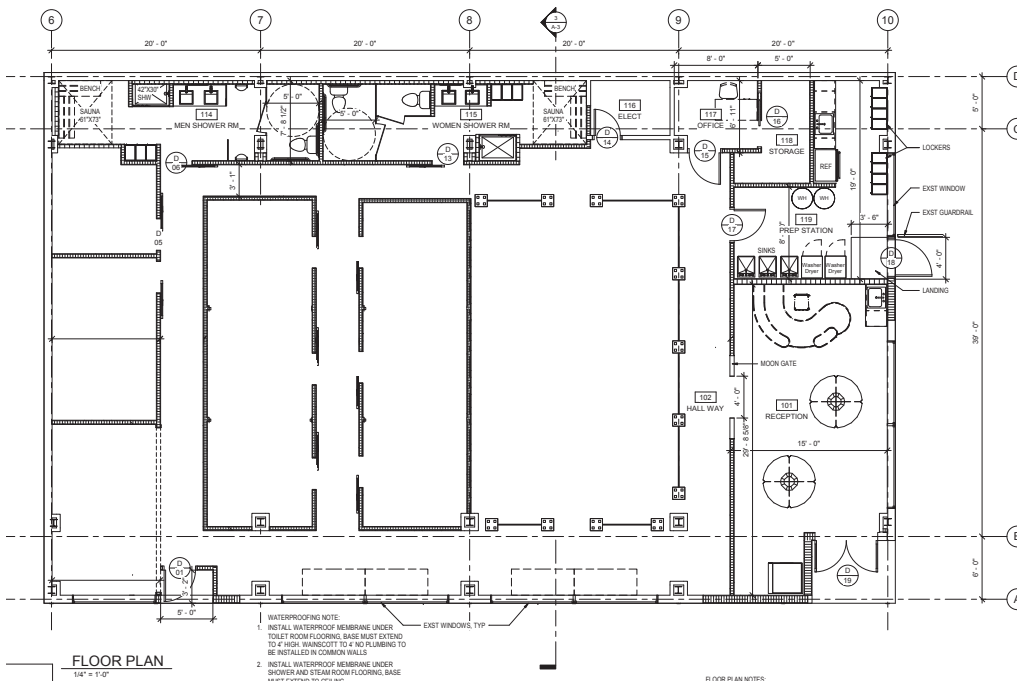


PEARL KAI SHOPPING CENTER DESCRIPTION

- Conveniently located just off H1 Freeway on Kamehameha Hwy in the heart of Aiea
- Across the street from Pearlridge Center
- Ample of free customer parking
- Very busy retail center with high customer traffic.
- Great tenant mix with retail, restaurant, office, & professional services
- Tenant improvement packages available

SPACE FEATURES

- A highly desired end cap suite
- Unobstructed direct visibility from main thorough-fare Kamehameha Hwy & rail line
- Easily accessible located near shopping center entrance
- Designated parking spaces fronting unit
- Two private restrooms included, both including showers, one being ADA compliant
- Long term lease possibility



Take a Virtual Tour
Scan the QR Code



Brant M. Yasaka (S)
RS-68051
808-271-4697
byasaka@cbi-hawaii.com

Taryn Taylor (S)
RS-85465
808-282-4583
ttaylor@cbi-hawaii.com

Yuuki Inagawa (S)
RS-79726
808-342-3039
yinagawa@cbi-hawaii.com

NAI CBI Hawaii
1712 S. King Street Suite 201
Honolulu, HI 96826
808.942.7100 | www.cbi-hawaii.com





Brant M. Yasaka (S)
RS-68051
808-271-4697
byasaka@cbi-hawaii.com

Taryn Taylor (S)
RS-85465
808-282-4583
ttaylor@cbi-hawaii.com

Yuuki Inagawa (S)
RS-79726
808-342-3039
yinagawa@cbi-hawaii.com

NAI CBI Hawaii
1712 S. King Street Suite 201
Honolulu, HI 96826
808.942.7100 | www.cbi-hawaii.com

