



FOR SALE

Great Location for Dentist Office

1308 PARSONS AVE | CAMPBELL, CA 95008

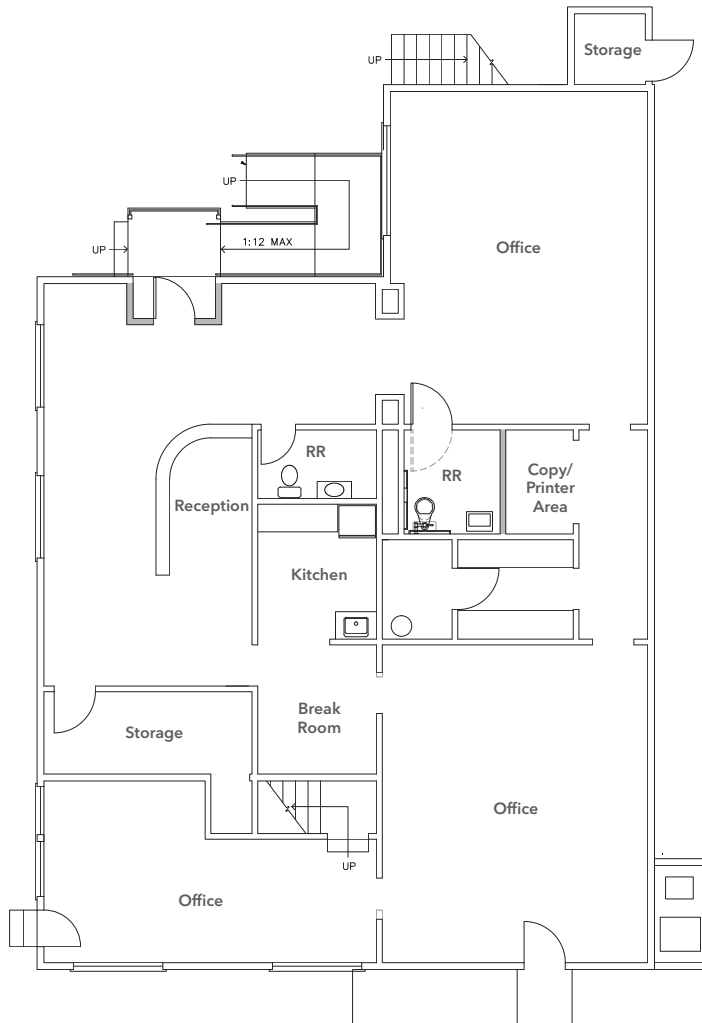
FOR SALE

1308 Parsons Ave

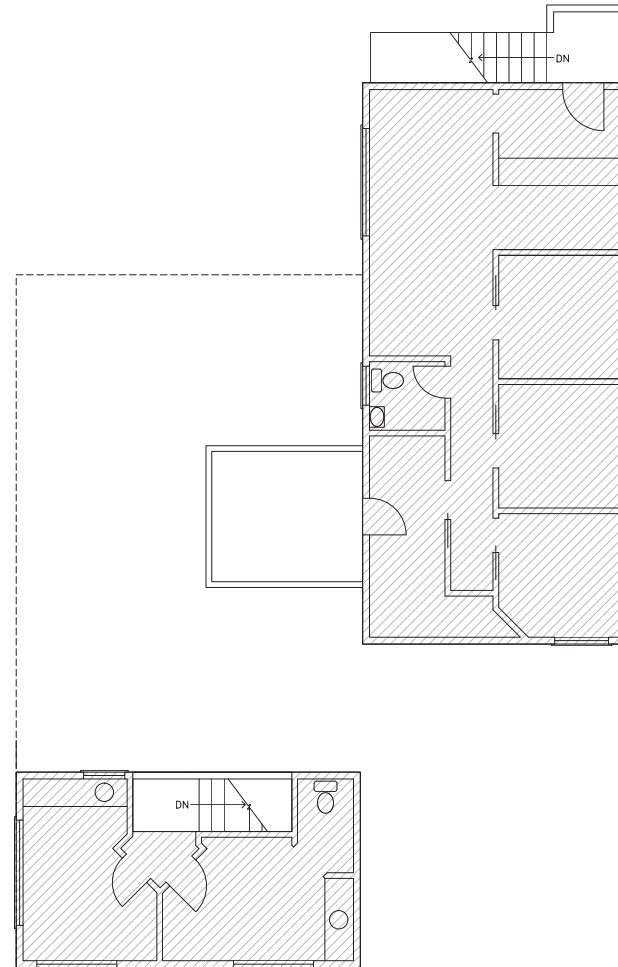
CAMPBELL, CA 95008

Floor Plan

FIRST FLOOR



SECOND FLOOR



FLOOR PLAN NOT TO SCALE

±3,664 SF

BUILDING SIZE

±12,947 SF

LOT SIZE

GREAT owner user opportunity in Campbell

MEDICAL uses allowed with CUP!

APN 414-33-061

ZONING P-O

PARKING 15 spaces

RESIDENTIAL development potential

SALE PRICE \$2,100,000

SHAUN ENFERADI

408.588.2314

shaun.enferadi@kidder.com

LIC N° 01896565

KIDDER.COM

This information supplied herein is from sources we deem reliable. It is provided without any representation, warranty, or guarantee, expressed or implied as to its accuracy. Prospective Buyer or Tenant should conduct an independent investigation and verification of all matters deemed to be material, including, but not limited to, statements of income and expenses. Consult your attorney, accountant, or other professional advisor.

km Kidder Mathews

FOR SALE

1308 Parsons Ave

CAMPBELL, CA 95008



EASY ACCESS to HWY 17

MANY amenities and restaurants nearby

MINUTES from Downtown Campbell and the Pruneyard

DEMOGRAPHICS

2023	1 Mile	3 Miles	5 Miles
Population	20,541	190,380	456,222
Median HH Income	\$158,584	\$183,894	\$180,881
Employment	14,460	71,912	165,651
Businesses	1,788	9,396	21,527

SHAUN ENFERADI

408.588.2314

shaun.enferadi@kidder.com

LIC N° 01896565

KIDDER.COM

This information supplied herein is from sources we deem reliable. It is provided without any representation, warranty, or guarantee, expressed or implied as to its accuracy. Prospective Buyer or Tenant should conduct an independent investigation and verification of all matters deemed to be material, including, but not limited to, statements of income and expenses. Consult your attorney, accountant, or other professional advisor.

