



PREMIER ±447,371 SF INTERCONNECTED HQ CAMPUS AVAILABLE



EXCLUSIVE LISTING AGENTS

TMG PARTNERS ITC

KKR

NEWMARK

PHIL MAHONEY  
408.982.8430  
phil.mahoney@nmrk.com

MIKE SAIGN  
408.982.8403  
mike.saign@nmrk.com

JON MACKEY  
408.987.4129  
jon.mackey@nmrk.com

# CAMPUS OVERVIEW

The Campus at Ellis is a purpose built hub for innovation at the intersection of Silicon Valley AI software and hardware development talent. The combination of high performance office space and best in class on-site fitness, wellness, food and collaboration amenities offer tenants the ability to optimize their time at work. The Campus at Ellis is designed to push boundaries, cultivate breakthrough ideas and shape the future of next generation technologies.

**BLDG  
B**

±86,948 SF

**BLDG  
C**

±144,053 SF

**BLDG  
D**

±92,571 SF

**BLDG  
A**

±95,848 SF

±447,371 TOTAL CAMPUS SF

**BLDG  
E**

±27,950 SF  
AMENITIES  
BUILDING



# CAMPUS HIGHLIGHTS



±447,371 SF Interconnected and Self-Enclosed HQ Campus



Unmatched \$22m Client Experience & Entertainment Center



Extensive Multi-Purpose Outdoor Amenity Areas



Renowned Silicon Valley Location with World Class Corporate Neighbors



±100,000 SF Floor Plates on the First Two Floors



Dedicated Amenities Building with Full Service Cafeteria, New Gastropub and Meeting Space



Recently Renovated State-of-the-Art Interiors, Fully Furnished for Immediate Occupancy



3.0/1000 Ratio, Secured Garage and Surface Parking Stalls



Multiple Public Transportation Options and Convenient Freeway Access



Building C Multi-Purpose Town Hall  
Interstitial Open Office Area



Gensler Designed Executive Briefing Center Lounge Located in Building C. \$22M in Improvements to EBC.



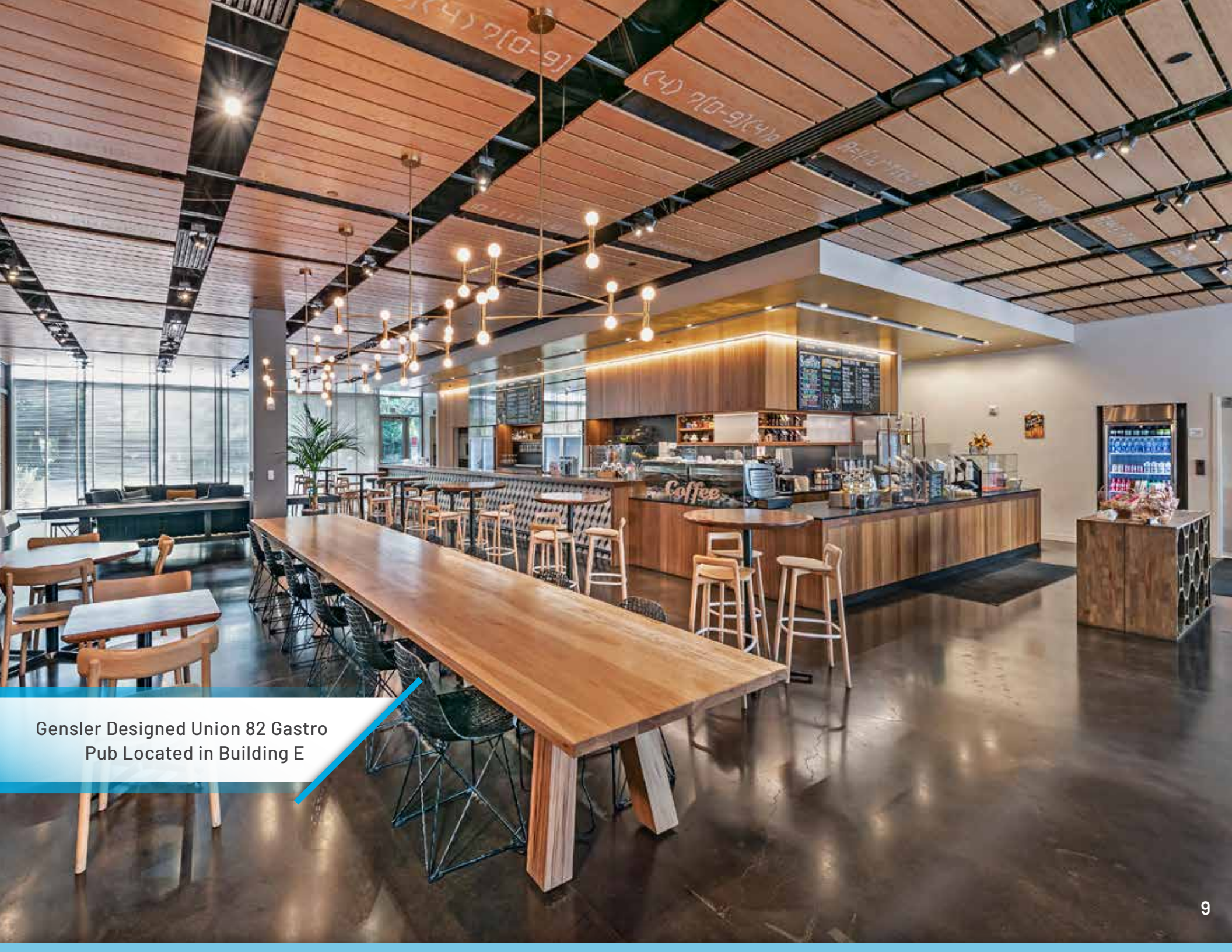
Building C - 3rd Floor All Hands  
Town Hall Seating Area



Campus Courtyard View from  
Building A - 3rd Floor Break Area



All Hands Fully Operational and  
Wired Training Center

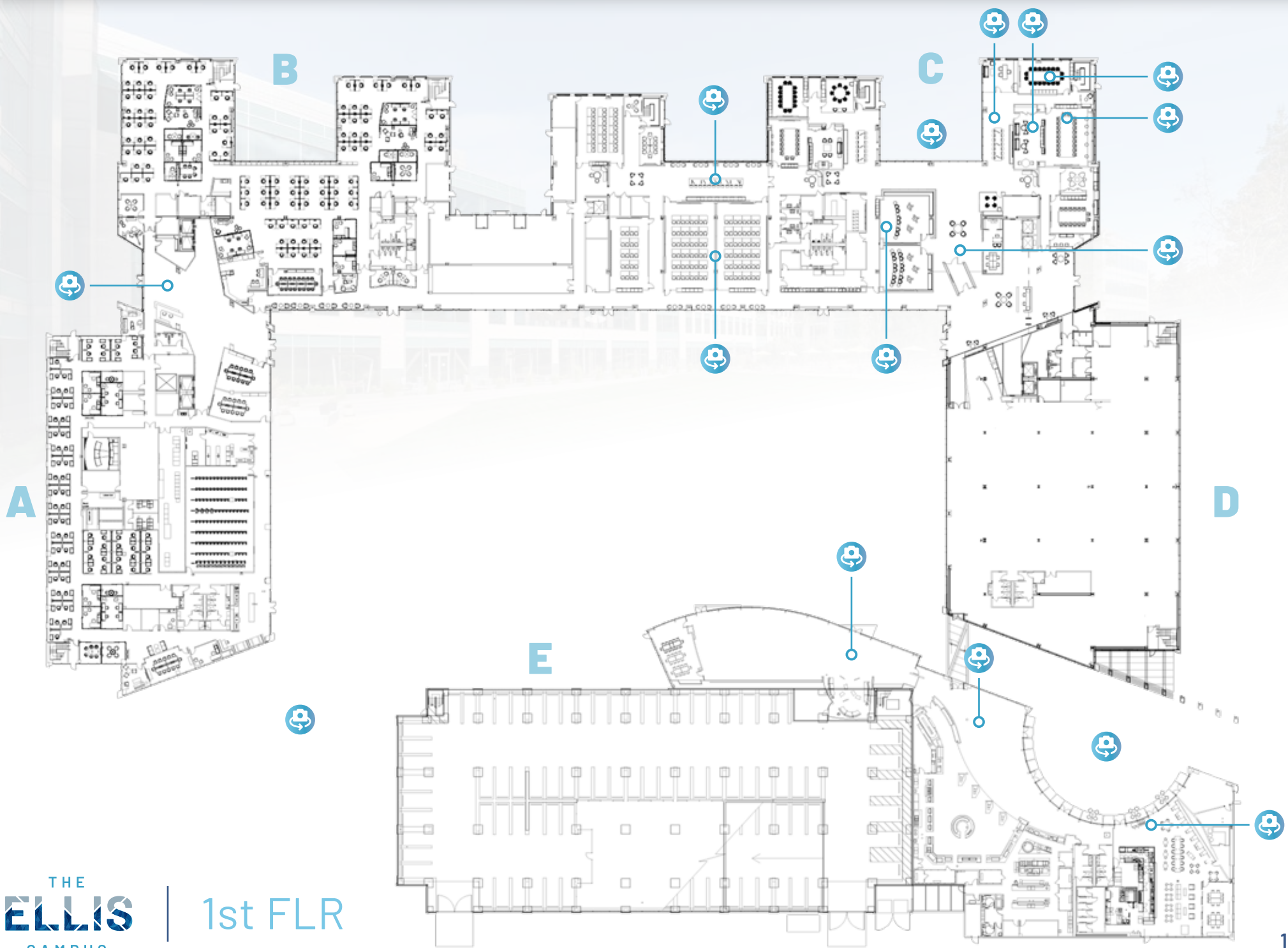


Gensler Designed Union 82 Gastro  
Pub Located in Building E



Expansive Outdoor Seating Area Adjacent to Cafeteria and Union 82 Gastro Pub

Expansive Outdoor Seating Area Adjacent to Cafeteria and Union 82 Gastro Pub



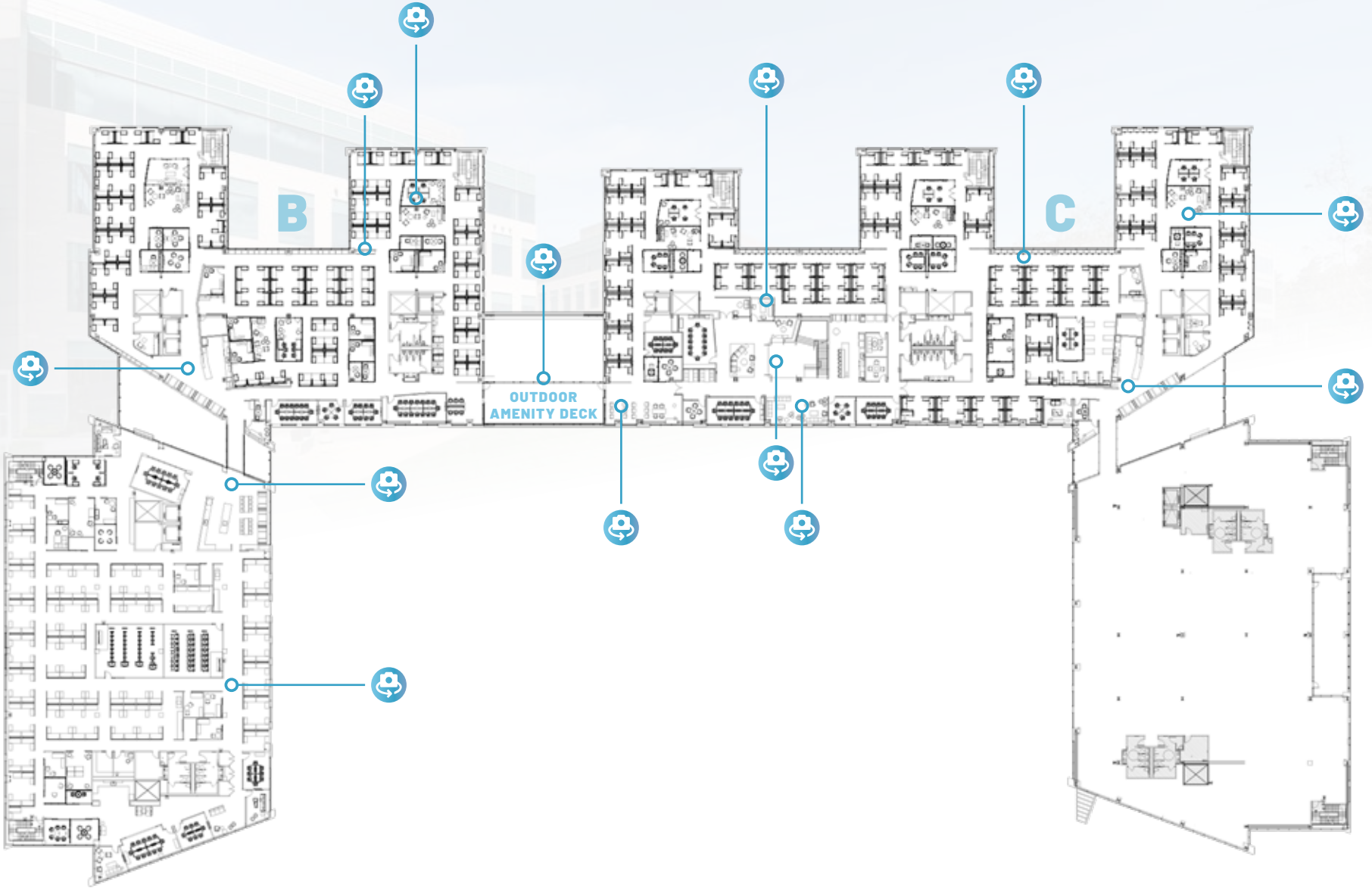
A

B

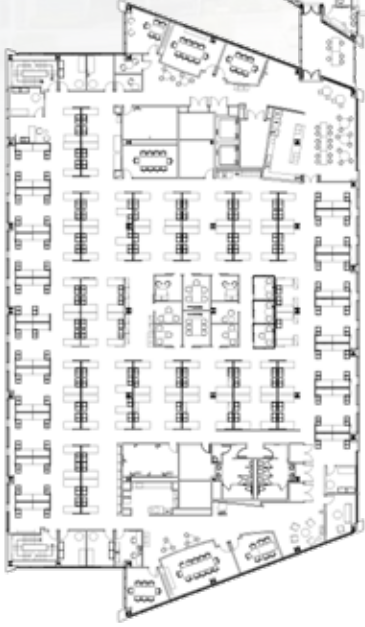
C

D

OUTDOOR AMENITY DECK



A



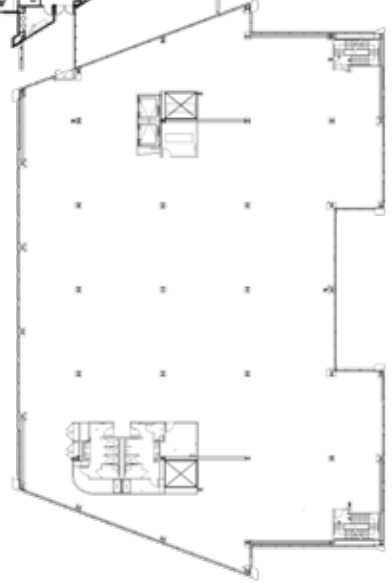
B



C



D



A



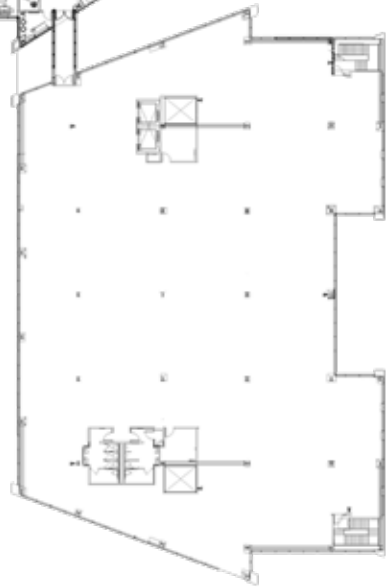
B



C



D



# TRANSPORTATION MAP

FROM THE ELLIS CAMPUS TO

DRIVE TIME

DISTANCE

Downtown Mountain View

6 mins

2.5 mi

Downtown Sunnyvale

7 mins

3.2 mi

San Jose International Airport

10 mins

8.9 mi

San Francisco International Airport

22 mins

24.7 mi







PREMIER ±447,371 SF INTERCONNECTED HQ CAMPUS AVAILABLE

The distributor of this communication is performing acts for which a real estate license is required. The information contained herein has been obtained from sources deemed reliable but has not been verified and no guarantee, warranty or representation, either express or implied, is made with respect to such information. Terms of sale or lease and availability are subject to change or withdrawal without notice. 21-0597 • 08/25

EXCLUSIVE LISTING AGENTS

TMG PARTNERS ITC

KKR NEWMARK

**MIKE SAIGN**  
408.982.8403  
mike.saign@nrmk.com  
CA RE Lic #01706668

**PHIL MAHONEY**  
408.982.8430  
phil.mahoney@nrmk.com  
CA RE Lic #00834704

**JON MACKEY**  
408.987.4129  
jon.mackey@nrmk.com  
CA RE Lic #01362376