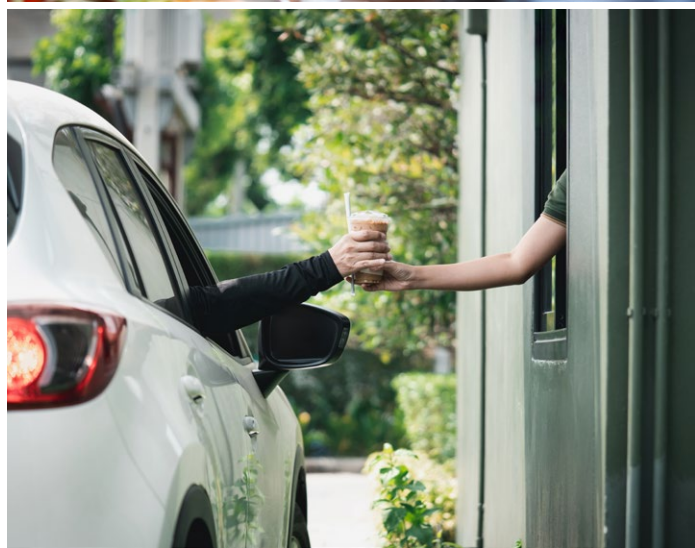




GREENFIELD RD & BASELINE RD

GILBERT, AZ

Hard Corner | Freestanding Drive-Thru Available



site plan overview

BUILDING SIZE:	±2,640 SF
LAND SIZE:	±52,412 SF
ADDRESS:	4361 E BASELINE RD GILBERT, AZ 85234
ZONING:	C-2, Town of Gilbert
PRICING:	CALL FOR PRICING

traffic count ADOT 2024

Greenfield Rd	Baseline Rd
N ±30,531 VPD (NB & SB)	E ±22,211 VPD (EB & WB)
S ±25,397 VPD (NB & SB)	W ±22,184 VPD (EB & WB)

neighboring tenants

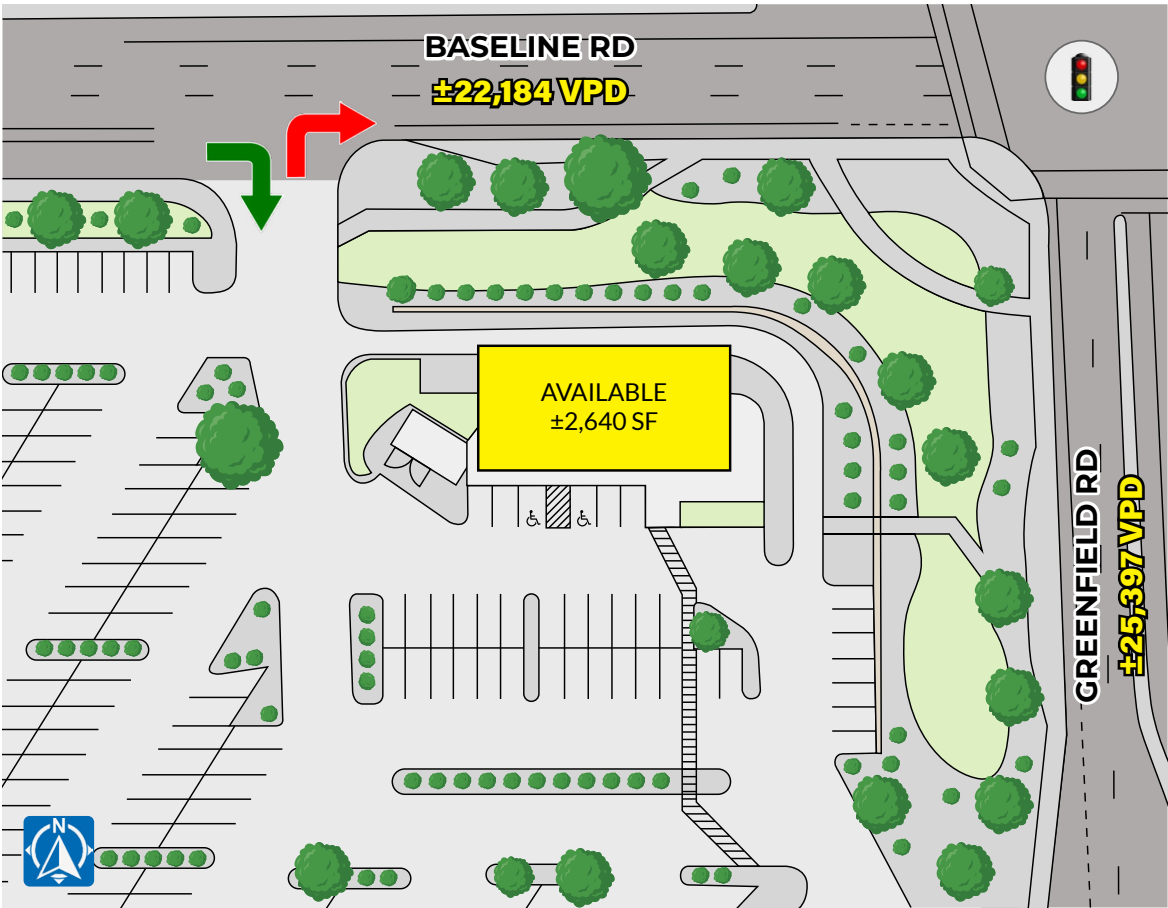








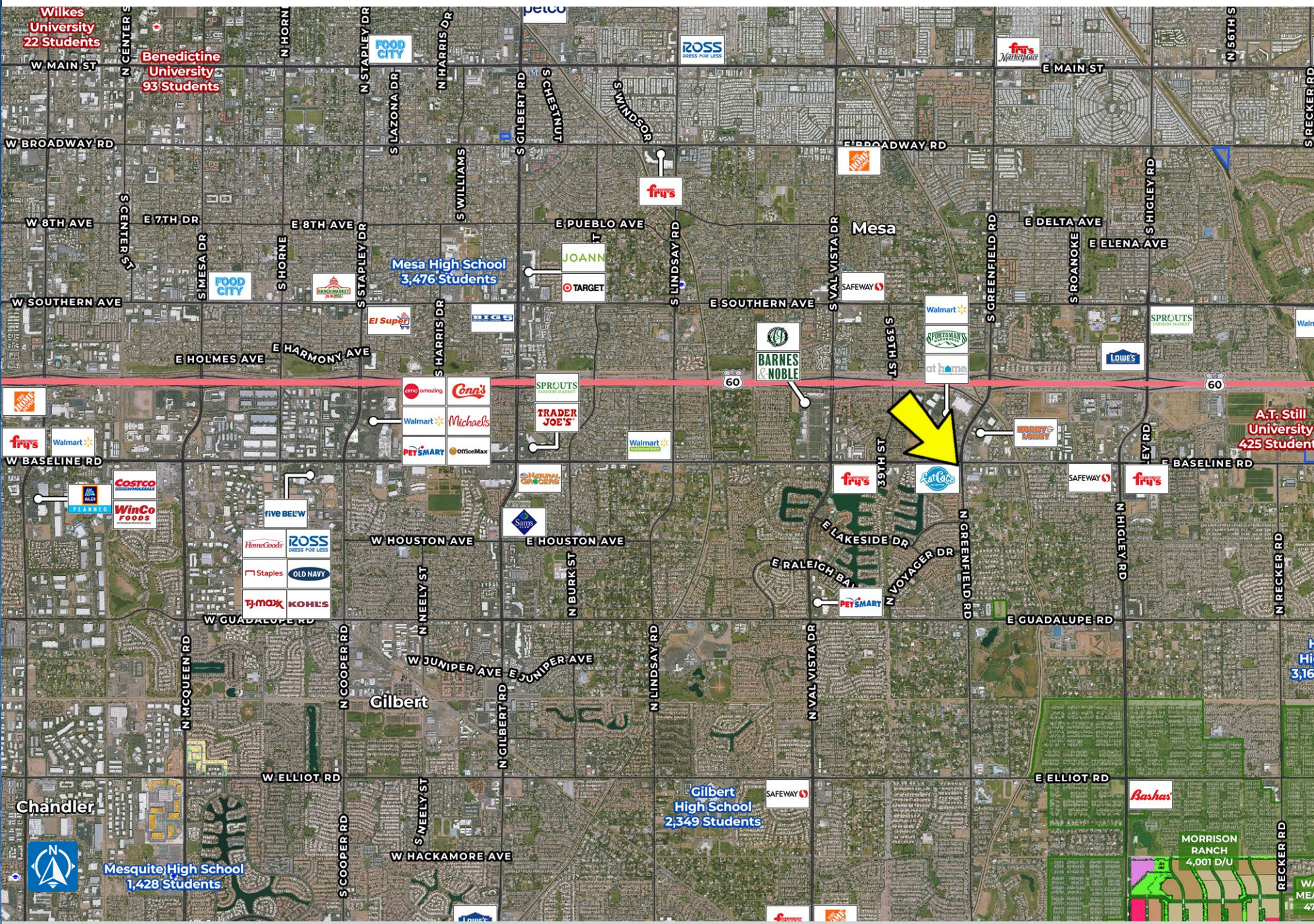


zoom aerial

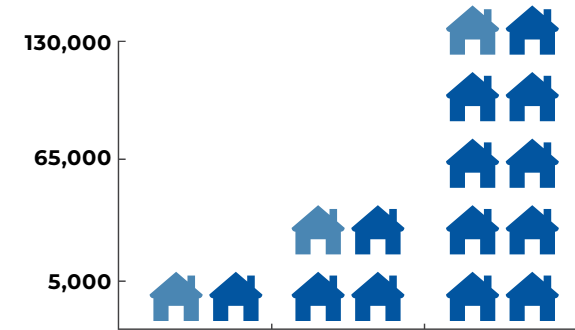
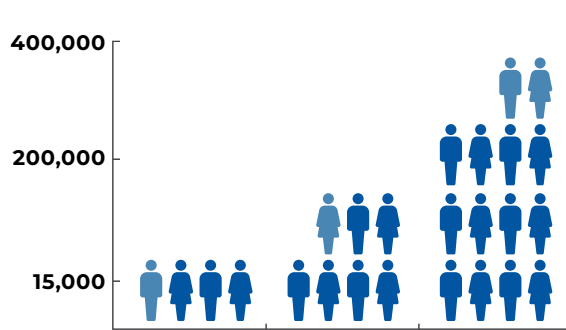


wide aerial



demographics overview

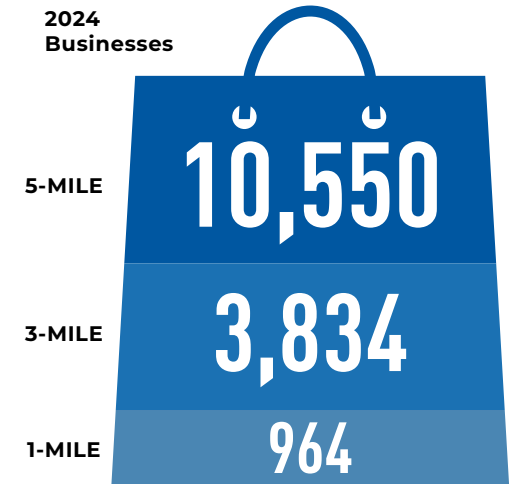
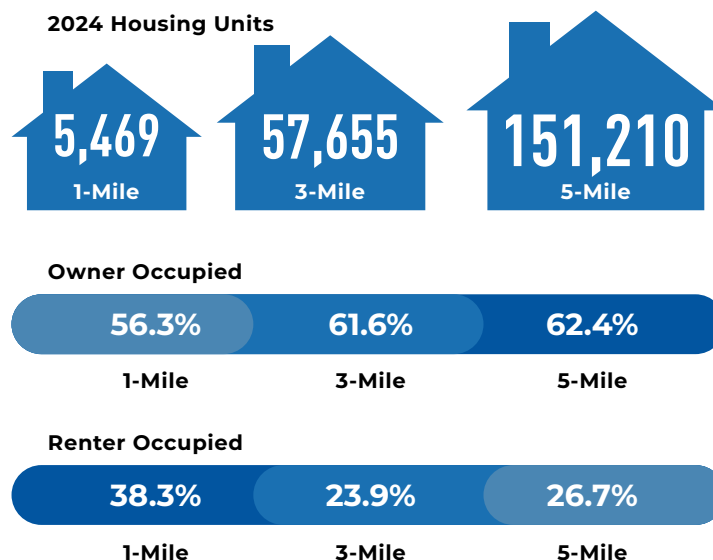
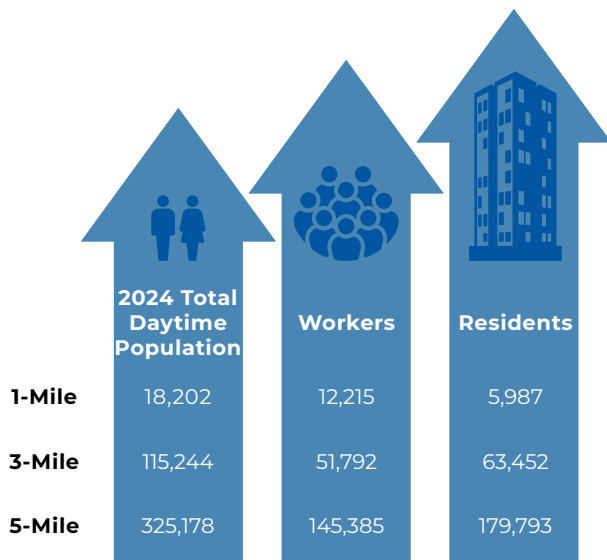
ESRI 2024



	1-Mile	3-Mile	5-Mile
2024 Total Population	13,524	126,840	359,087
2029 Total Population	13,501	127,732	366,522

	Median HH Income	Average HH Income	Per Capita Income
1-Mile	\$102,686	\$132,688	\$50,731
3-Mile	\$86,631	\$113,765	\$44,336
5-Mile	\$87,286	\$114,273	\$42,990

	1-Mile	3-Mile	5-Mile
2024 Households	5,171	49,290	134,851
2029 Households	5,237	50,432	139,702





PHOENIX COMMERCIAL ADVISORS

A MEMBER OF CHAIN LINKS RETAIL ADVISORS

exclusively listed by

ZACH PACE
(602) 734.7212
zpace@pcaemail.com

CAMERON WARREN
(602) 288.3471
cwarren@pcaemail.com

PHOENIX COMMERCIAL ADVISORS
3131 East Camelback Road, Suite 340
Phoenix, Arizona 85016
P. (602) 957-9800
F. (602) 957-0889
phoenixcommercialadvisors.com

The information contained herein has been obtained from sources believed reliable. While we do not doubt its accuracy, we have not verified it and make no guarantee, warranty or representation about it. It is your responsibility to independently confirm its accuracy and completeness. Any projections, opinions, assumptions or estimates used are for example only, and do not represent the current or future performance of the property. The value of this transaction to you depends on tax and other factors which should be evaluated by your tax, financial and legal advisors. You and your advisors should conduct a careful, independent investigation of the property to determine to your satisfaction the suitability of the property for your needs.