



FOR SUBLEASE

WAREHOUSE AVAILABLE | $\pm 19,500$ SF

15939 VALLEY BLVD. | CITY OF INDUSTRY | CA



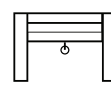
**$\pm 19,500$ SF
WAREHOUSE
BUILDING**



**$\pm 1,054$ SF
OFFICE SPACE**



**32'
CLEAR HEIGHT**



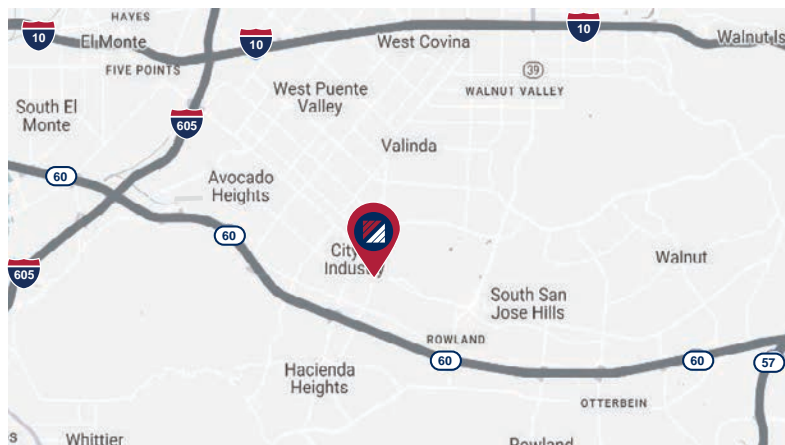
**5
DOCK HIGH DOORS
2 EXCLUSIVE & 3 SHARED**



**OUTSIDE
STORAGE**

PROPERTY HIGHLIGHTS:

- Warehouse & Distribution Space
- Racking Available
- $\pm 1,054$ SF Office Space
- 2 Exclusive Docks (10'X12') | 3 Shared
- 1 GL Door
- 32' Interior Clearance
- Gated Yard and Parking Area
- Immediate I-60 & I-605 Fwy Access
- \$1.70 PSF Gross



FOR MORE INFORMATION, PLEASE CONTACT:

CHARLES JOHNSON, SIOR

Executive Vice President
P: 562.576.1424 | M: 858.774.3198
charles.johnson@daumcommercial.com
CADRE#: 01817294

JOHN HASTINGS

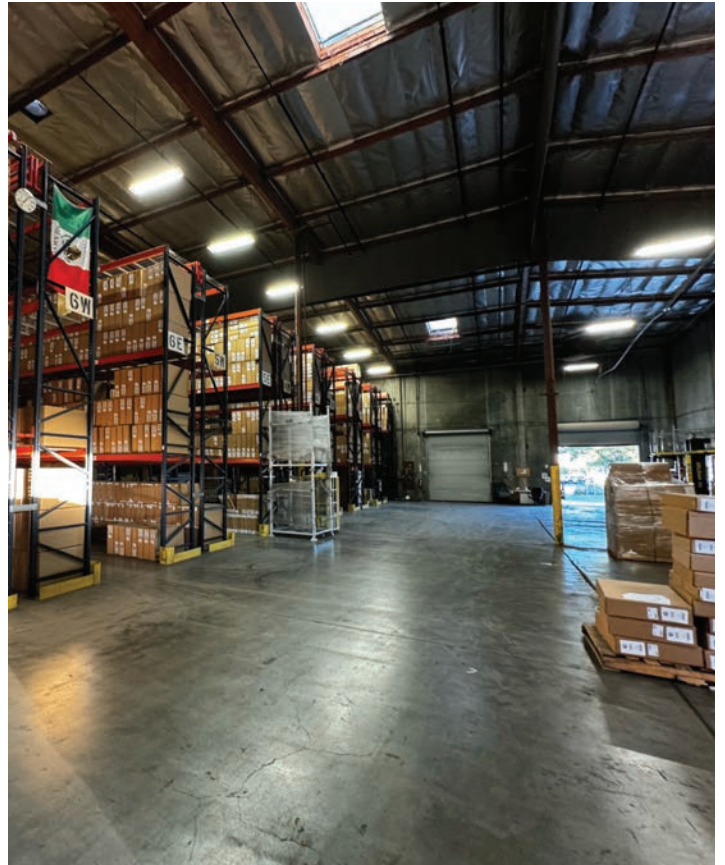
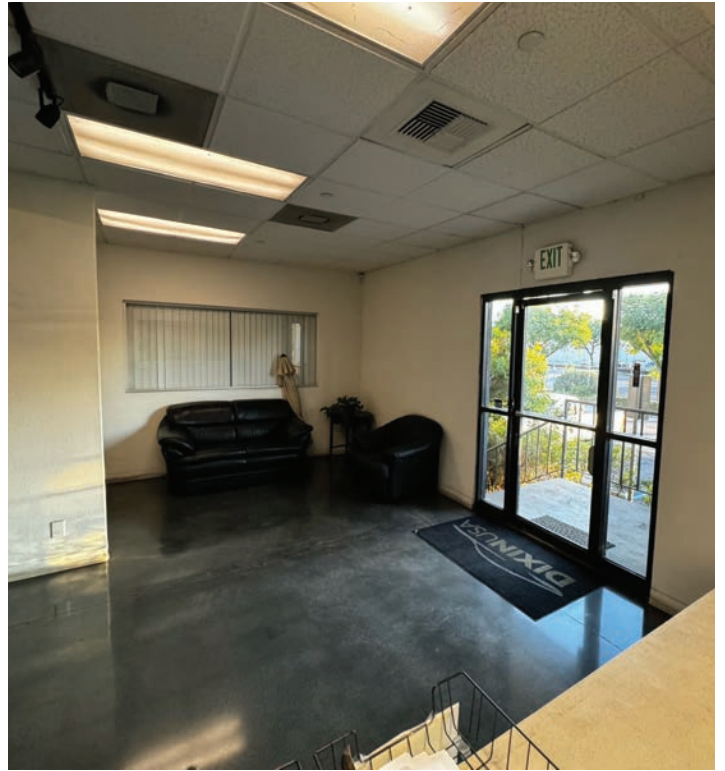
Associate
P: 562.908.5115 | M: 760.703.2212
jhastings@daumcommercial.com
CADRE#: 02145691

DAUM
COMMERCIAL REAL ESTATE SERVICES

DAUM Corp. #01129558. Maps Courtesy ©Google & ©Microsoft. Although all information is furnished regarding for sale, rental or financing from sources deemed reliable, such information has not been verified and no express representation is made nor is any to be implied as to the accuracy thereof, and it is submitted subject to errors, omissions, changes of price, rental or other conditions, prior sale, lease or financing, or withdrawal without notice.

www.daumcommercial.com

PHOTOS



FOR MORE INFORMATION, PLEASE CONTACT:

CHARLES JOHNSON, SIOR

Executive Vice President
P: 562.576.1424 | M: 858.774.3198
charles.johnson@daumcommercial.com
CADRE#: 01817294

JOHN HASTINGS

Associate
P: 562.908.5115 | M: 760.703.2212
jhastings@daumcommercial.com
CADRE#: 02145691



PHOTOS



FOR MORE INFORMATION, PLEASE CONTACT:

CHARLES JOHNSON, SIOR

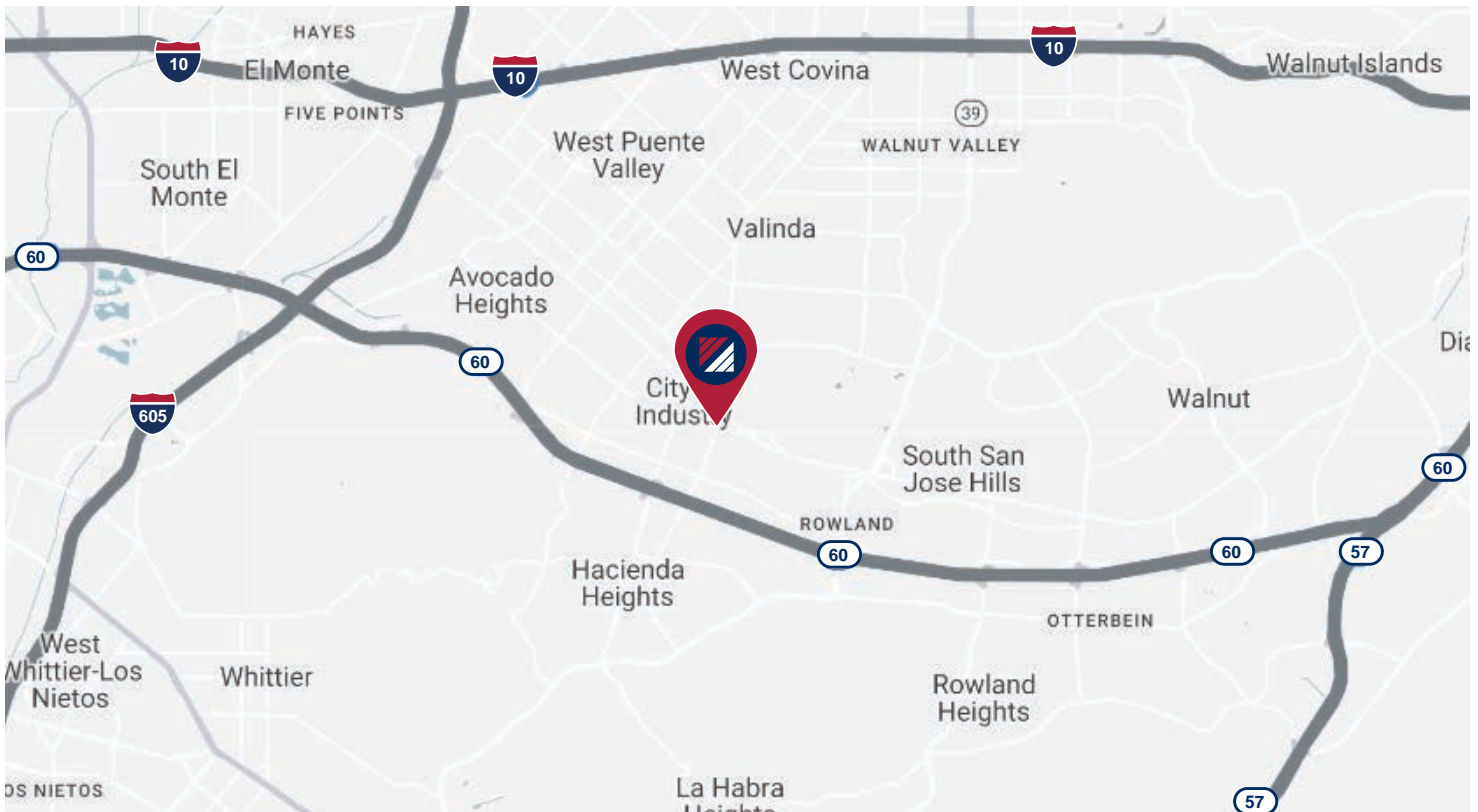
Executive Vice President
P: 562.576.1424 | M: 858.774.3198
charles.johnson@daumcommercial.com
CADRE#: 01817294

JOHN HASTINGS

Associate
P: 562.908.5115 | M: 760.703.2212
jhastings@daumcommercial.com
CADRE#: 02145691



AERIAL



FOR MORE INFORMATION, PLEASE CONTACT:

CHARLES JOHNSON, SIOR

Executive Vice President
P: 562.576.1424 | M: 858.774.3198
charles.johnson@daumcommercial.com
CADRE#: 01817294

JOHN HASTINGS

Associate
P: 562.908.5115 | M: 760.703.2212
jhastings@daumcommercial.com
CADRE#: 02145691



AMENITIES MAP



FOR MORE INFORMATION, PLEASE CONTACT:

CHARLES JOHNSON, SIOR

Executive Vice President
P: 562.576.1424 | M: 858.774.3198
charles.johnson@daumcommercial.com
CADRE#: 01817294

JOHN HASTINGS

Associate
P: 562.908.5115 | M: 760.703.2212
jhastings@daumcommercial.com
CADRE#: 02145691

